

Switch plate assembly for LHB-EOG GS & LHB-SG NON-AC coaches

Switch plate assembly for control of fans and mobile charging socket for LHB-EOG GS & LHB-SG NON-AC coaches.

Item No.	Description	Drawing No.	Qty.
1.	Switch Plate Assembly (Cabin Side)	CC74248, Alt. 'c'	1 No.
2.	Switch Plate Assembly (Corridor Side)	CC74249, Alt. 'c'	1 No.

Packing conditions of switch plates shall be as follows:

Stage 1: Standard packing of switch plates mentioned above shall be as per packing conditions document no. PI042.


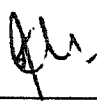
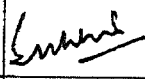
Stage 2: Packing per coach set shall be as per packing conditions to document no. PI021. Each packing shall be legibly marked for the type of coach applicable for.

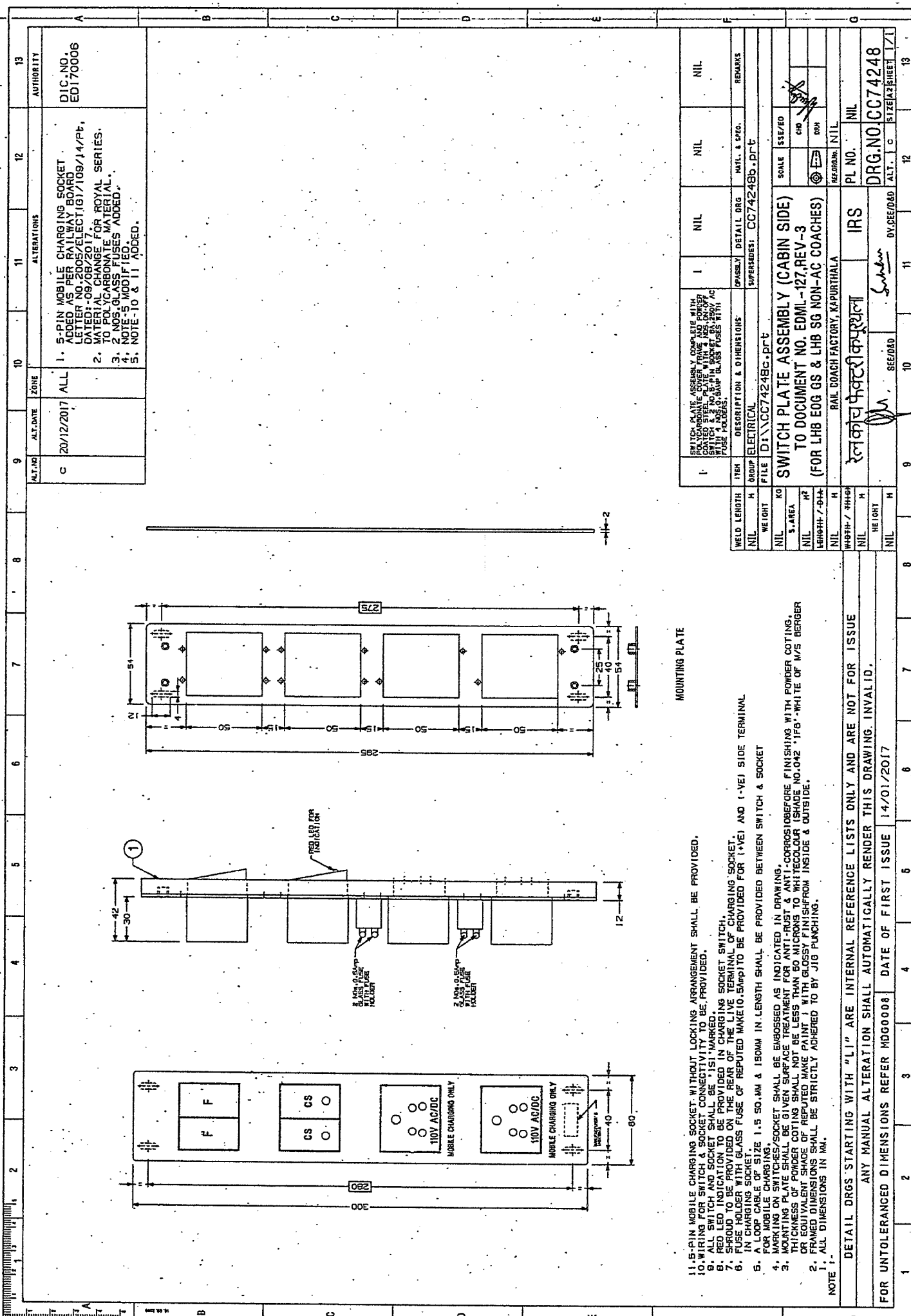
Stage 3: Bulk packing coach wise shall be as per packing conditions to document no. PI032. Each packing shall be legibly marked for the type of coach /coaches applicable for.

- N.B. :
- i) Firm shall get approved prototype sample from CEE/RCF before commencing Bulk supply.
 - ii) Switches shall be conforming to IS: 3854-1997 and sockets shall be conforming to IS: 1293-2005 and both shall be 'ISI' marked.
 - iii) Red colour LED indication shall be provided in charging socket switch.
 - iv) 5-pin mobile charging socket without locking arrangement shall be provided.
 - v) Wiring terminal details: - Terminals for connection of wires shall be provided as per the following detail.

For LHB EOG GS Coaches: One No. 0.5A glass fuse in phase wire only and One No. 0.5 A glass fuse spare. Glass fuses provided shall be of M/s Ferraz Shawmut or M/s Cooper Bussmann make.

For LHB SG Non-AC Coaches: One No. 0.5A glass fuse to be provided in +ve wire and One No. 0.5 A glass fuse to be provided in -ve wire. Glass fuses provided shall be of M/s Ferraz Shawmut or M/s Cooper Bussmann make.

EDML-127	3	20.12.2017				1 of 1
Document No.	Rev.	Date	SSE/CAD	SEE/D	Dy.CEE/D&D	Page No.



1	SWITCH PLATE ASSEMBLY FOR 5 PIN POLYCARBONATE SOCKET FROM 4 PIN COATED STEEL PLATE WITH 4 NOS. POLYCARBONATE SOCKET WITH 4 NOS. GLASS FUSES WITH FUSE HOLDERS.	ASSEMBLY	DETAIL DRG	MATL. & SPEC.	NIL	NIL	NIL	REMARKS
FILE	DI\XCC74248c.prt	SUPERDRG:	CC74248b.prt					
WELD LENGTH	NIL	WEIGHT	NIL	SCALE	SS/ED	CH	DR	
ITEM	GROUP	DESCRIPTION & DIMENSIONS	DETAIL DRG	MATL. & SPEC.	NIL	NIL	NIL	
FILE	DI\XCC74248c.prt	DESCRIPTION & DIMENSIONS	DETAIL DRG	MATL. & SPEC.	NIL	NIL	NIL	
WELD LENGTH	NIL	WEIGHT	NIL	SCALE	SS/ED	CH	DR	
ITEM	GROUP	DESCRIPTION & DIMENSIONS	DETAIL DRG	MATL. & SPEC.	NIL	NIL	NIL	
FILE	DI\XCC74248c.prt	DESCRIPTION & DIMENSIONS	DETAIL DRG	MATL. & SPEC.	NIL	NIL	NIL	
WELD LENGTH	NIL	WEIGHT	NIL	SCALE	SS/ED	CH	DR	
ITEM	GROUP	DESCRIPTION & DIMENSIONS	DETAIL DRG	MATL. & SPEC.	NIL	NIL	NIL	
FILE	DI\XCC74248c.prt	DESCRIPTION & DIMENSIONS	DETAIL DRG	MATL. & SPEC.	NIL	NIL	NIL	
WELD LENGTH	NIL	WEIGHT	NIL	SCALE	SS/ED	CH	DR	
ITEM	GROUP	DESCRIPTION & DIMENSIONS	DETAIL DRG	MATL. & SPEC.	NIL	NIL	NIL	
FILE	DI\XCC74248c.prt	DESCRIPTION & DIMENSIONS	DETAIL DRG	MATL. & SPEC.	NIL	NIL	NIL	
WELD LENGTH	NIL	WEIGHT	NIL	SCALE	SS/ED	CH	DR	
ITEM	GROUP	DESCRIPTION & DIMENSIONS	DETAIL DRG	MATL. & SPEC.	NIL	NIL	NIL	
FILE	DI\XCC74248c.prt	DESCRIPTION & DIMENSIONS	DETAIL DRG	MATL. & SPEC.	NIL	NIL	NIL	
WELD LENGTH	NIL	WEIGHT	NIL	SCALE	SS/ED	CH	DR	
ITEM	GROUP	DESCRIPTION & DIMENSIONS	DETAIL DRG	MATL. & SPEC.	NIL	NIL	NIL	
FILE	DI\XCC74248c.prt	DESCRIPTION & DIMENSIONS	DETAIL DRG	MATL. & SPEC.	NIL	NIL	NIL	
WELD LENGTH	NIL	WEIGHT	NIL	SCALE	SS/ED	CH	DR	
ITEM	GROUP	DESCRIPTION & DIMENSIONS	DETAIL DRG	MATL. & SPEC.	NIL	NIL	NIL	
FILE	DI\XCC74248c.prt	DESCRIPTION & DIMENSIONS	DETAIL DRG	MATL. & SPEC.	NIL	NIL	NIL	
WELD LENGTH	NIL	WEIGHT	NIL	SCALE	SS/ED	CH	DR	
ITEM	GROUP	DESCRIPTION & DIMENSIONS	DETAIL DRG	MATL. & SPEC.	NIL	NIL	NIL	
FILE	DI\XCC74248c.prt	DESCRIPTION & DIMENSIONS	DETAIL DRG	MATL. & SPEC.	NIL	NIL	NIL	
WELD LENGTH	NIL	WEIGHT	NIL	SCALE	SS/ED	CH	DR	
ITEM	GROUP	DESCRIPTION & DIMENSIONS	DETAIL DRG	MATL. & SPEC.	NIL	NIL	NIL	
FILE	DI\XCC74248c.prt	DESCRIPTION & DIMENSIONS	DETAIL DRG	MATL. & SPEC.	NIL	NIL	NIL	

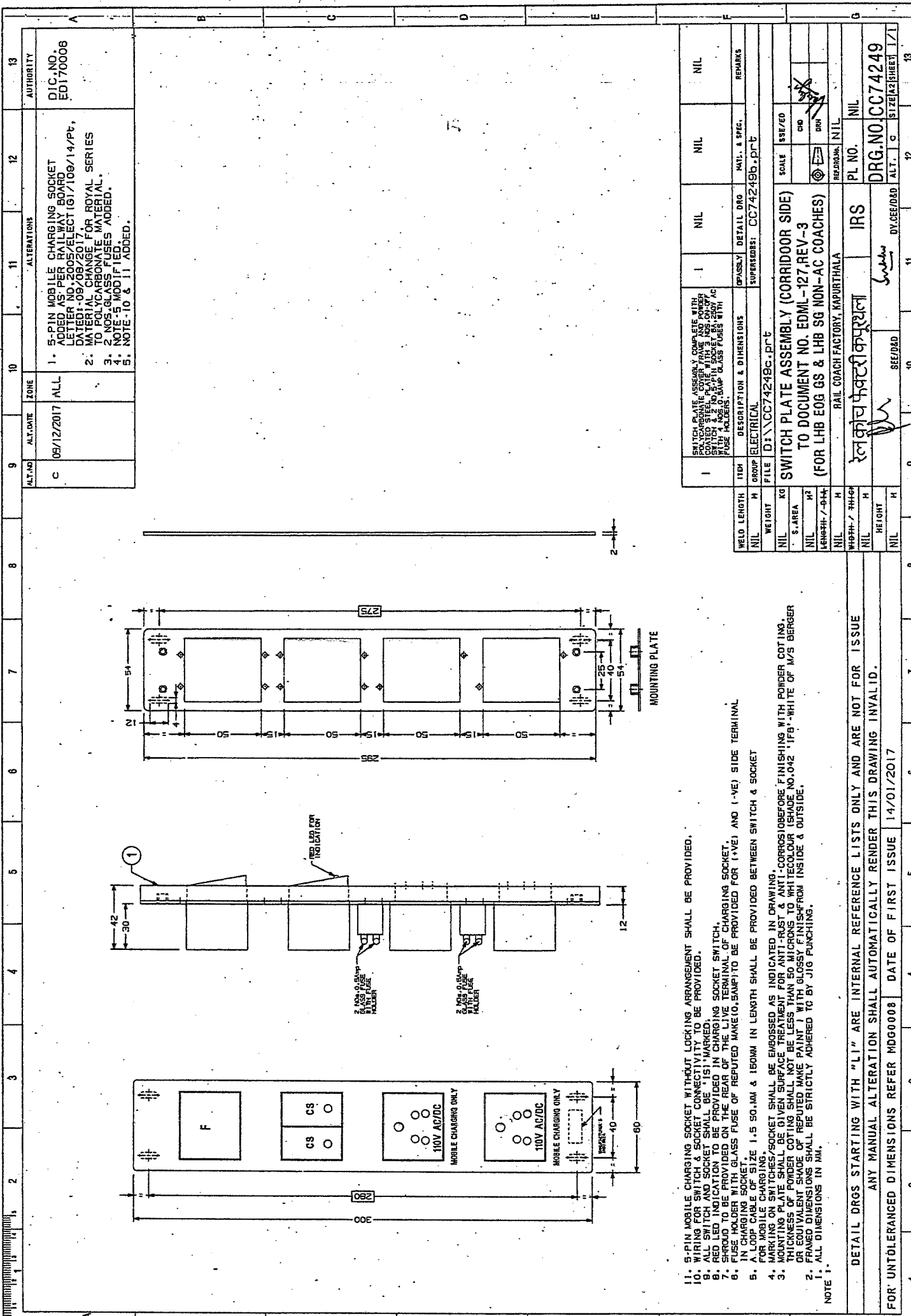
MOUNTING PLATE

1. 5-PIN MOBILE CHARGING SOCKET WITHOUT LOCKING ARRANGEMENT SHALL BE PROVIDED.
 2. MARKING ON SWITCHES/SOCKET SHALL BE EMBOSSED AS INDICATED IN DRAWING.
 3. MOUNTING PLATE SHALL BE GIVEN SURFACE TREATMENT FOR ANTI-RUST & ANTI-CORROSION BEFORE FINISHING WITH POWDER COATING. THICKNESS OF POWDER COATING SHALL NOT BE LESS THAN 80 MICRONS TO WHITE COLOUR (SHADE NO.042 '1F8'-WHITE OF M/S BERGER FRAMED DIMENSIONS) SHALL BE STRICTLY ADHERED TO BY JIG PUNCHING.
 4. MARKING ON SWITCHES/SOCKET SHALL BE EMBOSSED AS INDICATED IN DRAWING.
 5. A LOOP CABLE OF SIZE 1.5 SQ.MM & 180MM IN LENGTH SHALL BE PROVIDED BETWEEN SWITCH & SOCKET FOR MOBILE CHARGING.
 6. FUSE HOLDER WITH GLASS FUSE OF REPUTED MAKE (10, 5Amp) TO BE PROVIDED FOR (1+VE) AND (1-VE) SIDE TERMINAL IN CHARGING SOCKET.
 7. RED LED INDICATION TO BE PROVIDED IN CHARGING SOCKET SWITCH.
 8. RED LED INDICATION TO BE PROVIDED ON REAR OF THE LIVE TERMINAL OF CHARGING SOCKET.
 9. ALL SWITCHES, SOCKETS & TERMINAL CONNECTIONS TO BE PROVIDED.
 10. SWITCHES, SOCKETS & TERMINAL CONNECTIONS TO BE PROVIDED.

NOTE 1:-
 1. ALL DIMENSIONS IN MM.
 2. MARKING ON SWITCHES/SOCKET SHALL BE EMBOSSED AS INDICATED IN DRAWING.
 3. MOUNTING PLATE SHALL BE GIVEN SURFACE TREATMENT FOR ANTI-RUST & ANTI-CORROSION BEFORE FINISHING WITH POWDER COATING. THICKNESS OF POWDER COATING SHALL NOT BE LESS THAN 80 MICRONS TO WHITE COLOUR (SHADE NO.042 '1F8'-WHITE OF M/S BERGER FRAMED DIMENSIONS) SHALL BE STRICTLY ADHERED TO BY JIG PUNCHING.

DETAIL DRGS STARTING WITH "LI" ARE INTERNAL REFERENCE LISTS ONLY AND ARE NOT FOR ISSUE
 ANY MANUAL ALTERATION SHALL AUTOMATICALLY RENDER THIS DRAWING INVALID.
 FOR UNTOLERANCED DIMENSIONS REFER MDG0008 DATE OF FIRST ISSUE 14/01/2017

9	ALT. NO.	ALT. DATE	ZONE	10	11	12	13	
C	20/12/2017	ALL	1.	5-PIN MOBILE CHARGING SOCKET ADDED AS PER RAILWAY BOARD LETTER NO.2009/2/ELLECT/167/109/14/Pt.	2.	LETTER NO.2009/2/ELLECT/167/109/14/Pt. WATER TIGHT COVER FOR ROYAL SERIES. TO POLYCARBONATE MATERIAL.	3.	2 NOS. GLASS FUSES ADDED.
				4.	NOTE-5 MODIFIED.	5.	NOTE-10 & 11 ADDED.	
				ALTERNATIONS	AUTHORITY		DIC. NO. ED170006	



1. 5-PIN MOBILE CHARGING SOCKET WITHOUT LOCKING ARRANGEMENT SHALL BE PROVIDED.
2. WIRING FOR SWITCH & SOCKET CONNECTIVITY TO BE PROVIDED.
3. ALL SWITCH AND SOCKET SHALL BE 'I51' MARKED.
4. RED LED INDICATION TO BE PROVIDED IN CHARGING SOCKET SWITCH.
5. SHROUD TO BE PROVIDED ON THE REAR OF THE LIVE TERMINAL OF CHARGING SOCKET.
6. FUSE HOLDER WITH GLASS FUSE OF REPUTED MAKE (0.5AMP) TO BE PROVIDED FOR (+VE) AND (-VE) SIDE TERMINAL IN CHARGING SOCKET.
7. A LOOP CABLE OF SIZE 1.5 SQ.MM & 150MM IN LENGTH SHALL BE PROVIDED BETWEEN SWITCH & SOCKET FOR MOBILE CHARGING.
8. MARKING ON SWITCHES/SOCKET SHALL BE EMBOSSED AS INDICATED IN DRAWING.
9. MOUNTING PLATE SHALL BE GIVEN SURFACE TREATMENT FOR ANTI-RUST & ANTI-CORROSION BEFORE FINISHING WITH POWDER COATING. THICKNESS OF POWDER COATING SHALL NOT BE LESS THAN 50 MICRONS. WHITE COLOUR (GRADE NO.042 '1P') - WHITE OF M/S BERGER OR EQUIVALENT SHALL BE USED FOR FINISHING FROM INSIDE & OUTSIDE.
10. FRAMED DIMENSIONS SHALL BE STRICTLY ADHERED TO BY JIG PUNCHING.

NOTE 1:

DETAIL DRGS STARTING WITH "LI" ARE INTERNAL REFERENCE LISTS ONLY AND ARE NOT FOR ISSUE
 ANY MANUAL ALTERATION SHALL AUTOMATICALLY RENDER THIS DRAWING INVALID.

FOR UNTOLERANCED DIMENSIONS REFER MDD0008 DATE OF FIRST ISSUE 14/01/2017

9	ALT. NO.	ALT. DATE	ZONE	10	ALTERATIONS	11	12	13
C	05/12/2017	ALL		1.	5-PIN MOBILE CHARGING SOCKET ADDED AS PER RAILWAY BOARD LETTER NO. 2005/ELECT 161/108/14/Pt, DATED: 09/08/2017			DRG. NO. ED170008
				2.	MATERIAL CHANGE FOR ROYAL SERIES TO POLYCARBONATE MATERIAL.			
				3.	2 NOS. GLASS FUSES ADDED.			
				4.	NOTE-5 MODIFIED.			
				5.	NOTE-10 & 11 ADDED.			

1	ITEM	DESCRIPTION & DIMENSIONS	QUANTITY	DETAIL DRG	MAT. & SPEC.	REMARKS
		SWITCH PLATE ASSEMBLY COMPLETE WITH POLYCARBONATE COVER WITH 5-PIN SOCKET SWITCH & 2 NOS. 5-PIN SOCKET, 5A, 250V AC FUSE HOLDERS	1			NIL
	FILE	D:\CC742496.prt				
	GROUP	ELECTRICAL				
	WELD LENGTH	NIL				
	WEIGHT	NIL				
	KG	NIL				
	S.AREA	NIL				
	M ²	NIL				
	LENGTH	NIL				
	M	NIL				
	WIDTH	NIL				
	H	NIL				
	HEIGHT	NIL				
	SCALE	SCALE				
	DRG	DRG				
	REV	REV				
	PL NO.	PL NO.				
	DRG. NO	DRG. NO. CC74249				
	ALT.	ALT.				
	G	G				
	SIZE	SIZE				
	SHEET	SHEET				
	1/1	1/1				

SWITCH PLATE ASSEMBLY (CORRIDOR SIDE)
 TO DOCUMENT NO. EDML-127, REV-3
 (FOR LHB EOG GS & LHB SG NON-AC COACHES)

RAIL COACH FACTORY, KAPURTHALA

DRG. NO. CC742496.prt

DRG. NO. CC74249

Amendment No.- 1

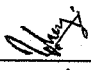
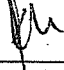
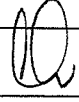
Amendment No-1 to EDML No.-127, Rev-3 for Switch Plate assembly for LHB EOG GS and LHB SG NON-AC Coaches.

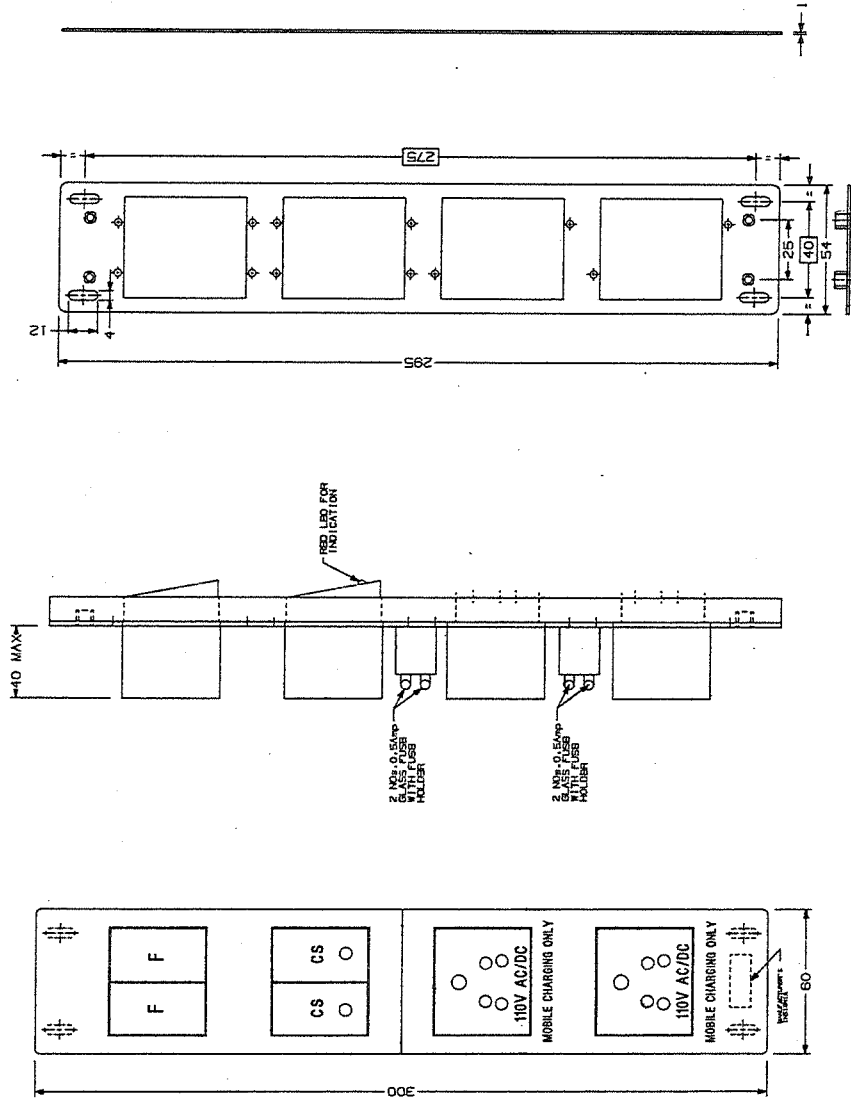
This Amendment is issued to EDML No.-127, Rev-3 for Switch Plate assembly for LHB EOG GS & LHB SG Non-AC Coaches to incorporate the following modification:-

1. Following drawings amended as follows :-
 - i) Drg no. CC74248, Alt-'c' may be read as Drg no. CC74248, Alt-'d'.
 - ii) Drg no. CC74249, Alt-'c' may be read as Drg no. CC74249, Alt-'d'.

Test:-

2. Following test shall be conducted from Govt./NABL accredited lab:-
 - i. Test for Polymer identification of FR Polycarbonate material.
 - ii. Fire retardant test to grade UL-94 V0 from the OEM of the raw material.
 - iii. Test for composition of contact Material (fixed and moving).

EDML-127	3	1	24-07-2019				1 of 1
Doc. No.	Rev.	Am.	Date	SSE/NAC	SEE/D	DY.CEE/D&D	Page



MOUNTING PLATE

13. SWITCH PLATE ARE TO BE MOUNTED IN COACH IN VERTICAL POSITION, ACCORDINGLY MANUFACTURER'S IN SIGNIA SHALL BE ENGAGED.
 12. PROTOTYPE SAMPLE SHALL BE GOT VALIDATED BEFORE COMMENCING BULK SUPPLY.
 11. 5-PIN MOBILE CHARGING SOCKET WITHOUT LOCKING ARRANGEMENTS/SCREW SHALL BE PROVIDED.
 10. COVER FRAME OF THE SWITCH PLATE ASSEMBLY SHALL BE OF WHITE COLOR ONLY.
 9. SWITCH SHALL CONFORM TO IS:3954-1987 & SOCKET SHALL CONFORM TO IS:1283-2005 AND BOTH SHALL BE ISI MARKED.
 8. RED LED INDICATION TO BE PROVIDED IN CHARGING SOCKET SWITCH.
 7. SHROUD TO BE PROVIDED ON THE REAR OF THE LIVE TERMINAL OF CHARGING SOCKET.
 6. FUSE HOLDER WITH GLASS FUSE OF REPUTED MAKE (0.5amp) TO BE PROVIDED FOR (+VE) AND (-VE) SIDE TERMINAL IN CHARGING SOCKET.
 5. WIRING FOR SWITCH, SOCKET AND FUSE CONNECTIVITY TO BE PROVIDED WITH 1.5 SQ.MM, E-BEAM CABLE TO SPECIFICATION NO.ELRS/SPEC/ELC/0019, LATEST APPLICABLE & PROCURED FROM ROSO APPROVED SOURCES.
 4. MARKING ON SWITCHES SHALL BE AS INDICATED IN DRAWING.
 3. SWITCH & SOCKET SHALL BE SCREWED ON POWDER COATED STEEL/GI WITHOUT POWDER COATED BASE PLATE OF MINIMUM THICKNESS 1.0 MM, WITH MINIMUM M3 SCREWS COMPLETE WITH HEX-NUT & SPRING WASHER.
 2. FRAMED DIMENSIONS SHALL BE STRICTLY ADHERED TO BY JIG PUNCHING.
- NOTE 1:
1. ALL DIMENSIONS IN MM.

DETAIL DROS STARTING WITH "LI" ARE INTERNAL REFERENCE LISTS ONLY AND ARE NOT FOR ISSUE
ANY MANUAL ALTERATION SHALL AUTOMATICALLY RENDER THIS DRAWING INVALID.

FOR UNTOLERANCED DIMENSIONS REFER MDG0008 DATE OF FIRST ISSUE 14/01/2017

13	12	11	10	9	8	7	6	5	4	3	2	1	
AUTHORITY		ALTERATIONS		ALT. NO.	ALT. DATE	ZONE	1. NOTE-3, 5, 9 & 10 UPDATED 2. NOTE-11, 12 & 13 ADDED & DRAWING MODIFIED ACCORDINGLY.						DIC. NO. EDI90009

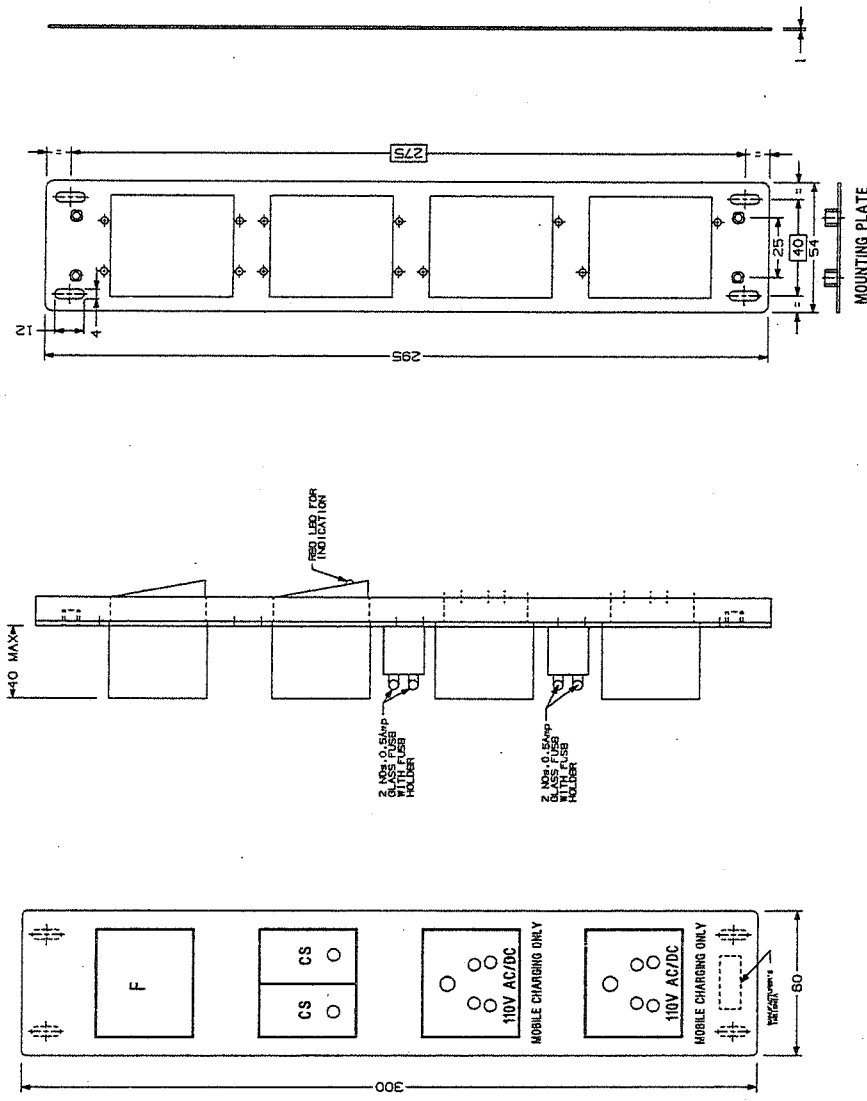
WELD LENGTH	M	DESCRIPTION & DIMENSIONS	OPASSLY	DETAIL DRG	MATL. & SPEC.	REMARKS
NIL	H	ELECTRICAL	FILE	D:\CC74248d.prt	CC74248c.prt	
WEIGHT	KG					
NIL						
S. AREA	MM ²					
NIL						
LENGTH / DIA	MM					
NIL						
WIDTH / THICK	MM					
NIL						
PL NO.						
DRG NO.						
ALT.						
SIZE						
ALT.						
SIZE						

SWITCH PLATE ASSEMBLY (CABIN SIDE)
(FOR LHB EOG GS & LHB SG NON-AC COACHES)

रेल कोच कार्पोरेशन
RAIL COACH FACTORY, KAPURTHALA

PL NO. NIL
DRG NO. CC74248

13	12	11	10	9	8	7	6	5	4	3	2	1
AUTHORITY		ALTERATIONS		ACT. NO.	ACT. DATE	ZONE	1. NOTE-3,5,9 & 10 UPDATED 2. NOTE-11,12 & 13 ADDED & DRAWING MODIFIED ACCORDINGLY.					
D.C. NO. ED190009				d	25/07/2019	F-1						



13. SWITCH PLATE ARE TO BE MOUNTED IN COACH IN VERTICAL POSITION, ACCORDINGLY MANUFACTURER'S INSIGNIA SHALL BE EMBOSSED.
 12. PROTOTYPE SAMPLE SHALL BE GOT VALIDATED BEFORE COMMENCING BULK SUPPLY.
 11. 5-PIN MOBILE CHARGING SOCKET WITHOUT LOCKING ARRANGEMENT/SHUTTER SHALL BE PROVIDED.
 10. COVER FRAME OF THE SWITCH PLATE ASSEMBLY SHALL BE OF WHITE COLOR ONLY.
 9. SWITCH SHALL CONFORM TO IS:3854-1997 & SOCKET SHALL CONFORM TO IS:1293-2005 AND BOTH SHALL BE ISI MARKED.
 8. RED LED INDICATION TO BE PROVIDED IN CHARGING SOCKET SWITCH.
 7. SHROUD TO BE PROVIDED ON THE REAR OF THE LIVE TERMINAL OF CHARGING SOCKET.
 6. FUSE HOLDER WITH GLASS FUSE OF REPUTED MAKE(0.5AMP) TO BE PROVIDED FOR (+VE) AND (-VE) SIDE TERMINAL IN CHARGING SOCKET.
 5. WIRING FOR SWITCH, SOCKET AND FUSE CONNECTIVITY TO BE PROVIDED WITH 1.5 50.0MM, E-BEAM CABLE TO SPECIFICATION NO.ELRS/SPEC/ELC/0019, LATEST APPLICABLE & PROCURED FROM ROSSO APPROVED SOURCES.
 4. MARKING ON SWITCHES SHALL BE AS INDICATED IN DRAWING.
 3. 1.0 MM WELDED SHALL BE SCREWED ON POWDER COATED STEEL/61 WITHOUT POWDER COATED BASE PLATE OF MINIMUM THICKNESS TO 0.8MM WITH WELDED BE SCREWED COMPLETE WITH HEX. NUT & SPRING WASHER.
 2. FRAMED DIMENSIONS SHALL BE STRICTLY ADHERED TO BY JIG PUNCHING.
 1. ALL DIMENSIONS IN MM.
- NOTE: 1. DETAIL DRGS STARTING WITH "LI" ARE INTERNAL REFERENCE LISTS ONLY AND ARE NOT FOR ISSUE
ANY MANUAL ALTERATION SHALL AUTOMATICALLY RENDER THIS DRAWING INVALID.

WELD	LENGTH	ITEM	DESCRIPTION & DIMENSIONS	GROUP	DETAIL DRG	MATL. & SPEC.	REMARKS
NIL			ELECTRICAL	FILE	D:\CC74249d.prt	CC74249c.prt	
WEIGHT	KG						
NIL							
S. AREA	M ²						
NIL							
LENGTH	M						
NIL							
HEIGHT	M						
NIL							
SWITCH PLATE ASSEMBLY (CORRIDOR SIDE) (FOR LHB EOG GS & LHB SG NON-AC COACHES)							
RAIL COACH FACTORY, KAPURTHALA							
रेलकोच कार्पोरेशन SEE/D&D							
SCALE	SSE/ED		RES.DWG. NO.				
	CHD		NIL				
	DRN		NIL				
PL NO.	ALT.		SIZE/A2 SHEET				
DRG. NO. CC74249	1/1						