

**Switch plate assembly alongwith mobile sockets for Conventional & LHB type SCN/ Antyodaya GS coaches:**

**Table-1**

1) Switch plate assembly with mobile charging socket for provision on either side of each cabin in SCN coaches.

Item no.	Description	Reference	Qty.	Drawing No.
1.	Switch plate assembly complete with polycarbonate cover frame and powder coated steel plate with 4 nos. ON-OFF switches and 1 no. 5-pin socket 6A,250V AC with 2 nos. 0.5 Amp Glass fuses with fuse holders	M/s SSK or RCF approved make	1 No.	OGA,mounting dimensions, orientation and marking as per drawing no.CC74247,Alt-'c' .Item-1
2.	Switch plate assembly complete with polycarbonate cover frame and powder coated steel plate with 4 nos. ON-OFF switches and 1 no. 5-pin socket 6A,250V AC with 2 nos. 0.5 Amp Glass fuses with fuse holders	M/s SSK or RCF approved make	1 No.	OGA,mounting dimensions, orientation and marking as per drawing no.CC74247,Alt-'c' .Item-2
3.	Switch plate assembly complete with polycarbonate cover frame and powder coated steel plate with 1 nos. ON-OFF switches and 1 no. 5-pin socket 6A,250V AC with 2 nos. 0.5 Amp Glass fuses with fuse holders	M/s SSK or RCF approved make	1 No.	OGA,mounting dimensions, orientation and marking as per drawing no.CC74247,Alt-'c' ,Item-3

EDML-086	6	16.11.17				1 of 2
Document no.	Rev.	Date	SSE/CAD	SEE/D	DY.CEE/D&D	Page no.

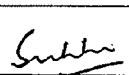
**Table-2**

- 2) Switch plate assembly with mobile charging socket for provision on either side of each cabin in **LHB Type Antyodaya GS coaches.**

Item no.	Description	Reference	Qty.	Drawing No.
1.	Switch plate assembly complete with polycarbonate cover frame and powder coated steel plate with 3 nos. ON-OFF switches and 1 no. 5-pin socket 6A,250V AC with 2 nos. 0.5 Amp Glass fuses with fuse holders	M/s SSK or RCF approved make	1 No.	OGA, mounting dimensions, orientation and marking as per drawing no. CC74253, Alt-'a', Item-1
2.	Switch plate assembly complete with polycarbonate cover frame and powder coated steel plate with 2 nos. ON-OFF switches and 2 no. 5-pin socket 6A,250V AC with 4 nos. 0.5 Amp Glass fuses with fuse holders	M/s SSK or RCF approved make	1 No.	OGA, mounting dimensions, orientation and marking as per drawing no. CC74253, Alt-'a', Item-2
3.	Switch plate assembly complete with polycarbonate cover frame and powder coated steel plate with 1 nos. ON-OFF switches and 1 no. 5-pin socket 6A,250V AC with 2 nos. 0.5 Amp Glass fuses with fuse holders	M/s SSK or RCF approved make	1 No.	OGA, mounting dimensions, orientation and marking as per drawing no. CC74247, Alt-'c', Item-3

Packing conditions of switch plates shall be as follows:

- Stage 1: Standard packing of switch plates mentioned above as per packing conditions document no. PI042.
- Stage 2: Packing per coach set as per packing conditions document no. PI021. Each packing shall be legibly marked for the type of coach applicable for.
- Stage 3: Bulk packing coach wise as per packing conditions document no. PI032. Each packing shall be legibly marked for the type of coach/coaches applicable for.
- N.B : i) Firm shall get approved prototype sample from CEE/RCF before commencing Bulk supply.
- ii) All switches and socket shall be 'ISI' marked.
- iii) Red colour LED indication shall be provided in charging socket switch.
- iv) 5-pin mobile charging socket without locking arrangement shall be provided.
- v) Wire terminal details:-Terminals for connection of wires shall be provided as per the following details.
- a) For Conventional SCN & LHB SG Type coaches:- 0.5A fuse in +ve wire & 0.5A fuse in -ve wire.
- b) For LHB EOG SCN/GS coaches:- 0.5A fuse in Phase only & 0.5A fuse spare.

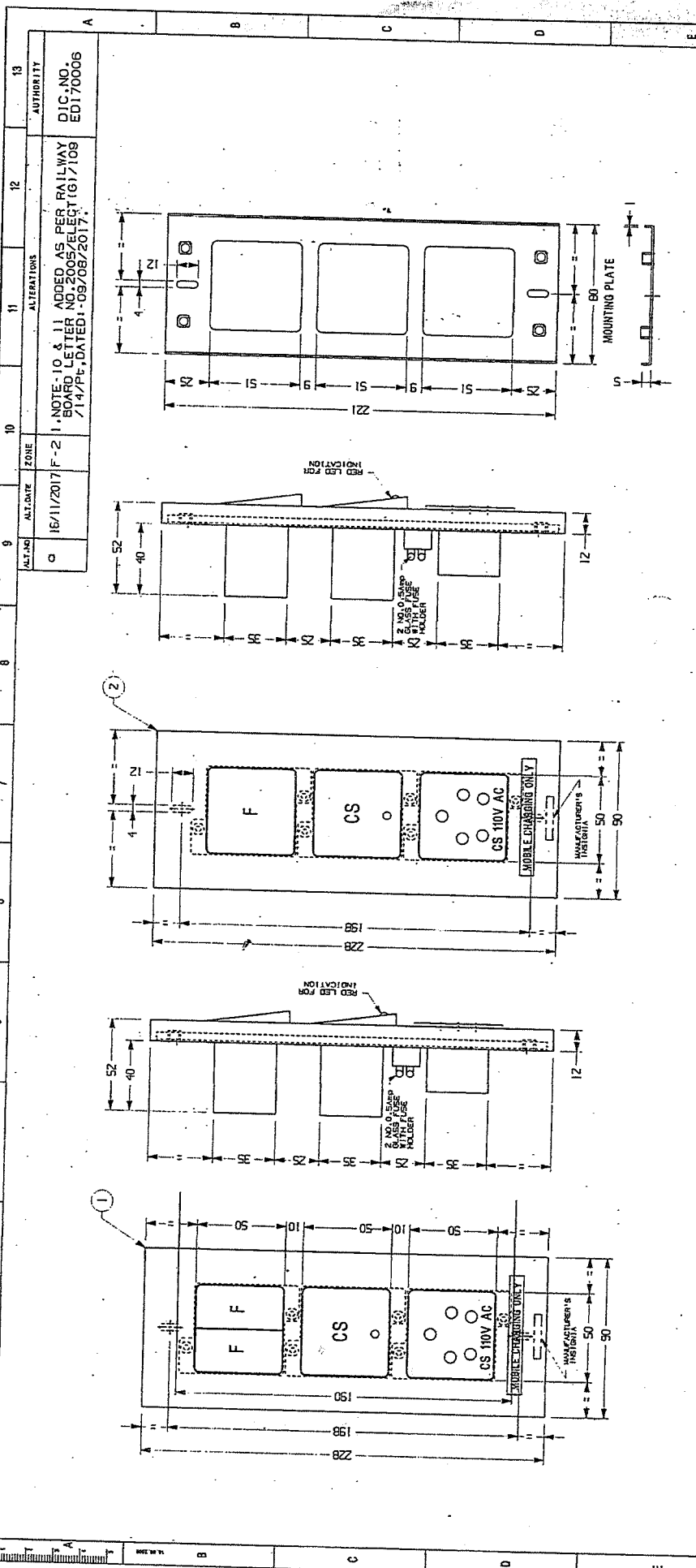
EDML-086	6	15.11.17				2 of 2
Document no.	Rev.	Date	SSE/CAD	SEE/D	DY.CEE/D&D	Page no.

1	2	3	4	5	6	7	8	9	10	11	12	13
ACT. NO.		ALT. DATE		ZONE		ALTERATIONS		AUTHORITY				
C		01/11/2017		ALL		1. ITEM NO. 3, 5-PIN MOBILE CHARGING SOCKET ADDED AS PER RAILWAY BOARD LETTER NO. 2053/RECT/GT/109/14/Pt. D LTR. DATED 10/09/2017. 2. NOS. 6, 8, 9, 10, 11, 12, 13, 14, 15, 16, 17, 18, 19, 20, 21, 22, 23, 24, 25, 26, 27, 28, 29, 30, 31, 32, 33, 34, 35, 36, 37, 38, 39, 40, 41, 42, 43, 44, 45, 46, 47, 48, 49, 50, 51, 52, 53, 54, 55, 56, 57, 58, 59, 60, 61, 62, 63, 64, 65, 66, 67, 68, 69, 70, 71, 72, 73, 74, 75, 76, 77, 78, 79, 80, 81, 82, 83, 84, 85, 86, 87, 88, 89, 90, 91, 92, 93, 94, 95, 96, 97, 98, 99, 100, 101, 102, 103, 104, 105, 106, 107, 108, 109, 110, 111, 112, 113, 114, 115, 116, 117, 118, 119, 120, 121, 122, 123, 124, 125, 126, 127, 128, 129, 130, 131, 132, 133, 134, 135, 136, 137, 138, 139, 140, 141, 142, 143, 144, 145, 146, 147, 148, 149, 150, 151, 152, 153, 154, 155, 156, 157, 158, 159, 160, 161, 162, 163, 164, 165, 166, 167, 168, 169, 170, 171, 172, 173, 174, 175, 176, 177, 178, 179, 180, 181, 182, 183, 184, 185, 186, 187, 188, 189, 190, 191, 192, 193, 194, 195, 196, 197, 198, 199, 200, 201, 202, 203, 204, 205, 206, 207, 208, 209, 210, 211, 212, 213, 214, 215, 216, 217, 218, 219, 220, 221, 222, 223, 224, 225, 226, 227, 228, 229, 230, 231, 232, 233, 234, 235, 236, 237, 238, 239, 240, 241, 242, 243, 244, 245, 246, 247, 248, 249, 250, 251, 252, 253, 254, 255, 256, 257, 258, 259, 260, 261, 262, 263, 264, 265, 266, 267, 268, 269, 270, 271, 272, 273, 274, 275, 276, 277, 278, 279, 280, 281, 282, 283, 284, 285, 286, 287, 288, 289, 290, 291, 292, 293, 294, 295, 296, 297, 298, 299, 300, 301, 302, 303, 304, 305, 306, 307, 308, 309, 310, 311, 312, 313, 314, 315, 316, 317, 318, 319, 320, 321, 322, 323, 324, 325, 326, 327, 328, 329, 330, 331, 332, 333, 334, 335, 336, 337, 338, 339, 340, 341, 342, 343, 344, 345, 346, 347, 348, 349, 350, 351, 352, 353, 354, 355, 356, 357, 358, 359, 360, 361, 362, 363, 364, 365, 366, 367, 368, 369, 370, 371, 372, 373, 374, 375, 376, 377, 378, 379, 380, 381, 382, 383, 384, 385, 386, 387, 388, 389, 390, 391, 392, 393, 394, 395, 396, 397, 398, 399, 400, 401, 402, 403, 404, 405, 406, 407, 408, 409, 410, 411, 412, 413, 414, 415, 416, 417, 418, 419, 420, 421, 422, 423, 424, 425, 426, 427, 428, 429, 430, 431, 432, 433, 434, 435, 436, 437, 438, 439, 440, 441, 442, 443, 444, 445, 446, 447, 448, 449, 450, 451, 452, 453, 454, 455, 456, 457, 458, 459, 460, 461, 462, 463, 464, 465, 466, 467, 468, 469, 470, 471, 472, 473, 474, 475, 476, 477, 478, 479, 480, 481, 482, 483, 484, 485, 486, 487, 488, 489, 490, 491, 492, 493, 494, 495, 496, 497, 498, 499, 500, 501, 502, 503, 504, 505, 506, 507, 508, 509, 510, 511, 512, 513, 514, 515, 516, 517, 518, 519, 520, 521, 522, 523, 524, 525, 526, 527, 528, 529, 530, 531, 532, 533, 534, 535, 536, 537, 538, 539, 540, 541, 542, 543, 544, 545, 546, 547, 548, 549, 550, 551, 552, 553, 554, 555, 556, 557, 558, 559, 560, 561, 562, 563, 564, 565, 566, 567, 568, 569, 570, 571, 572, 573, 574, 575, 576, 577, 578, 579, 580, 581, 582, 583, 584, 585, 586, 587, 588, 589, 590, 591, 592, 593, 594, 595, 596, 597, 598, 599, 600, 601, 602, 603, 604, 605, 606, 607, 608, 609, 610, 611, 612, 613, 614, 615, 616, 617, 618, 619, 620, 621, 622, 623, 624, 625, 626, 627, 628, 629, 630, 631, 632, 633, 634, 635, 636, 637, 638, 639, 640, 641, 642, 643, 644, 645, 646, 647, 648, 649, 650, 651, 652, 653, 654, 655, 656, 657, 658, 659, 660, 661, 662, 663, 664, 665, 666, 667, 668, 669, 670, 671, 672, 673, 674, 675, 676, 677, 678, 679, 680, 681, 682, 683, 684, 685, 686, 687, 688, 689, 690, 691, 692, 693, 694, 695, 696, 697, 698, 699, 700, 701, 702, 703, 704, 705, 706, 707, 708, 709, 710, 711, 712, 713, 714, 715, 716, 717, 718, 719, 720, 721, 722, 723, 724, 725, 726, 727, 728, 729, 730, 731, 732, 733, 734, 735, 736, 737, 738, 739, 740, 741, 742, 743, 744, 745, 746, 747, 748, 749, 750, 751, 752, 753, 754, 755, 756, 757, 758, 759, 760, 761, 762, 763, 764, 765, 766, 767, 768, 769, 770, 771, 772, 773, 774, 775, 776, 777, 778, 779, 780, 781, 782, 783, 784, 785, 786, 787, 788, 789, 790, 791, 792, 793, 794, 795, 796, 797, 798, 799, 800, 801, 802, 803, 804, 805, 806, 807, 808, 809, 810, 811, 812, 813, 814, 815, 816, 817, 818, 819, 820, 821, 822, 823, 824, 825, 826, 827, 828, 829, 830, 831, 832, 833, 834, 835, 836, 837, 838, 839, 840, 841, 842, 843, 844, 845, 846, 847, 848, 849, 850, 851, 852, 853, 854, 855, 856, 857, 858, 859, 860, 861, 862, 863, 864, 865, 866, 867, 868, 869, 870, 871, 872, 873, 874, 875, 876, 877, 878, 879, 880, 881, 882, 883, 884, 885, 886, 887, 888, 889, 890, 891, 892, 893, 894, 895, 896, 897, 898, 899, 900, 901, 902, 903, 904, 905, 906, 907, 908, 909, 910, 911, 912, 913, 914, 915, 916, 917, 918, 919, 920, 921, 922, 923, 924, 925, 926, 927, 928, 929, 930, 931, 932, 933, 934, 935, 936, 937, 938, 939, 940, 941, 942, 943, 944, 945, 946, 947, 948, 949, 950, 951, 952, 953, 954, 955, 956, 957, 958, 959, 960, 961, 962, 963, 964, 965, 966, 967, 968, 969, 970, 971, 972, 973, 974, 975, 976, 977, 978, 979, 980, 981, 982, 983, 984, 985, 986, 987, 988, 989, 990, 991, 992, 993, 994, 995, 996, 997, 998, 999, 1000.		1. ITEM NO. 3, 5-PIN MOBILE CHARGING SOCKET ADDED AS PER RAILWAY BOARD LETTER NO. 2053/RECT/GT/109/14/Pt. D LTR. DATED 10/09/2017. 2. NOS. 6, 8, 9, 10, 11, 12, 13, 14, 15, 16, 17, 18, 19, 20, 21, 22, 23, 24, 25, 26, 27, 28, 29, 30, 31, 32, 33, 34, 35, 36, 37, 38, 39, 40, 41, 42, 43, 44, 45, 46, 47, 48, 49, 50, 51, 52, 53, 54, 55, 56, 57, 58, 59, 60, 61, 62, 63, 64, 65, 66, 67, 68, 69, 70, 71, 72, 73, 74, 75, 76, 77, 78, 79, 80, 81, 82, 83, 84, 85, 86, 87, 88, 89, 90, 91, 92, 93, 94, 95, 96, 97, 98, 99, 100, 101, 102, 103, 104, 105, 106, 107, 108, 109, 110, 111, 112, 113, 114, 115, 116, 117, 118, 119, 120, 121, 122, 123, 124, 125, 126, 127, 128, 129, 130, 131, 132, 133, 134, 135, 136, 137, 138, 139, 140, 141, 142, 143, 144, 145, 146, 147, 148, 149, 150, 151, 152, 153, 154, 155, 156, 157, 158, 159, 160, 161, 162, 163, 164, 165, 166, 167, 168, 169, 170, 171, 172, 173, 174, 175, 176, 177, 178, 179, 180, 181, 182, 183, 184, 185, 186, 187, 188, 189, 190, 191, 192, 193, 194, 195, 196, 197, 198, 199, 200, 201, 202, 203, 204, 205, 206, 207, 208, 209, 210, 211, 212, 213, 214, 215, 216, 217, 218, 219, 220, 221, 222, 223, 224, 225, 226, 227, 228, 229, 230, 231, 232, 233, 234, 235, 236, 237, 238, 239, 240, 241, 242, 243, 244, 245, 246, 247, 248, 249, 250, 251, 252, 253, 254, 255, 256, 257, 258, 259, 260, 261, 262, 263, 264, 265, 266, 267, 268, 269, 270, 271, 272, 273, 274, 275, 276, 277, 278, 279, 280, 281, 282, 283, 284, 285, 286, 287, 288, 289, 290, 291, 292, 293, 294, 295, 296, 297, 298, 299, 300, 301, 302, 303, 304, 305, 306, 307, 308, 309, 310, 311, 312, 313, 314, 315, 316, 317, 318, 319, 320, 321, 322, 323, 324, 325, 326, 327, 328, 329, 330, 331, 332, 333, 334, 335, 336, 337, 338, 339, 340, 341, 342, 343, 344, 345, 346, 347, 348, 349, 350, 351, 352, 353, 354, 355, 356, 357, 358, 359, 360, 361, 362, 363, 364, 365, 366, 367, 368, 369, 370, 371, 372, 373, 374, 375, 376, 377, 378, 379, 380, 381, 382, 383, 384, 385, 386, 387, 388, 389, 390, 391, 392, 393, 394, 395, 396, 397, 398, 399, 400, 401, 402, 403, 404, 405, 406, 407, 408, 409, 410, 411, 412, 413, 414, 415, 416, 417, 418, 419, 420, 421, 422, 423, 424, 425, 426, 427, 428, 429, 430, 431, 432, 433, 434, 435, 436, 437, 438, 439, 440, 441, 442, 443, 444, 445, 446, 447, 448, 449, 450, 451, 452, 453, 454, 455, 456, 457, 458, 459, 460, 461, 462, 463, 464, 465, 466, 467, 468, 469, 470, 471, 472, 473, 474, 475, 476, 477, 478, 479, 480, 481, 482, 483, 484, 485, 486, 487, 488, 489, 490, 491, 492, 493, 494, 495, 496, 497, 498, 499, 500, 501, 502, 503, 504, 505, 506, 507, 508, 509, 510, 511, 512, 513, 514, 515, 516, 517, 518, 519, 520, 521, 522, 523, 524, 525, 526, 527, 528, 529, 530, 531, 532, 533, 534, 535, 536, 537, 538, 539, 540, 541, 542, 543, 544, 545, 546, 547, 548, 549, 550, 551, 552, 553, 554, 555, 556, 557, 558, 559, 560, 561, 562, 563, 564, 565, 566, 567, 568, 569, 570, 571, 572, 573, 574, 575, 576, 577, 578, 579, 580, 581, 582, 583, 584, 585, 586, 587, 588, 589, 590, 591, 592, 593, 594, 595, 596, 597, 598, 599, 600, 601, 602, 603, 604, 605, 606, 607, 608, 609, 610, 611, 612, 613, 614, 615, 616, 617, 618, 619, 620, 621, 622, 623, 624, 625, 626, 627, 628, 629, 630, 631, 632, 633, 634, 635, 636, 637, 638, 639, 640, 641, 642, 643, 644, 645, 646, 647, 648, 649, 650, 651, 652, 653, 654, 655, 656, 657, 658, 659, 660, 661, 662, 663, 664, 665, 666, 667, 668, 669, 670, 671, 672, 673, 674, 675, 676, 677, 678, 679, 680, 681, 682, 683, 684, 685, 686, 687, 688, 689, 690, 691, 692, 693, 694, 695, 696, 697, 698, 699, 700, 701, 702, 703, 704, 705, 706, 707, 708, 709, 710, 711, 712, 713, 714, 715, 716, 717, 718, 719, 720, 721, 722, 723, 724, 725, 726, 727, 728, 729, 730, 731, 732, 733, 734, 735, 736, 737, 738, 739, 740, 741, 742, 743, 744, 745, 746, 747, 748, 749, 750, 751, 752, 753, 754, 755, 756, 757, 758, 759, 760, 761, 762, 763, 764, 765, 766, 767, 768, 769, 770, 771, 772, 773, 774, 775, 776, 777, 778, 779, 780, 781, 782, 783, 784, 785, 786, 787, 788, 789, 790, 791, 792, 793, 794, 795, 796, 797, 798, 799, 800, 801, 802, 803, 804, 805, 806, 807, 808, 809, 810, 811, 812, 813, 814, 815, 816, 817, 818, 819, 820, 821, 822, 823, 824, 825, 826, 827, 828, 829, 830, 831, 832, 833, 834, 835, 836, 837, 838, 839, 840, 841, 842, 843, 844, 845, 846, 847, 848, 849, 850, 851, 852, 853, 854, 855, 856, 857, 858, 859, 860, 861, 862, 863, 864, 865, 866, 867, 868, 869, 870, 871, 872, 873, 874, 875, 876, 877, 878, 879, 880, 881, 882, 883, 884, 885, 886, 887, 888, 889, 890, 891, 892, 893, 894, 895, 896, 897, 898, 899, 900, 901, 902, 903, 904, 905, 906, 907, 908, 909, 910, 911, 912, 913, 914, 915, 916, 917, 918, 919, 920, 921, 922, 923, 924, 925, 926, 927, 928, 929, 930, 931, 932, 933, 934, 935, 936, 937, 938, 939, 940, 941, 942, 943, 944, 945, 946, 947, 948, 949, 950, 951, 952, 953, 954, 955, 956, 957, 958, 959, 960, 961, 962, 963, 964, 965, 966, 967, 968, 969, 970, 971, 972, 973, 974, 975, 976, 977, 978, 979, 980, 981, 982, 983, 984, 985, 986, 987, 988, 989, 990, 991, 992, 993, 994, 995, 996, 997, 998, 999, 1000.				
1. 5-PIN MOBILE CHARGING SOCKET WITHOUT LOCKING ARRANGEMENT SHALL BE PROVIDED. 2. WIRING FOR SWITCH & SOCKET CONNECTIVITY TO BE PROVIDED. 3. SWITCH & SOCKET SHALL BE SORBED ON BASE PLATE WITH MINIMUM M3 SCREWS COMPLETE WITH HEX NUT & SPRING WASHER. 4. SWITCH SHALL CONFORM TO IS3354-1997 & SOCKET SHALL CONFORM TO IS1293-2005 AND BOTH SHALL BE 1ST MARKED. 5. RED LED INDICATION TO BE PROVIDED IN CHARGING SOCKET SWITCH. 6. SHROUD TO BE PROVIDED ON THE REAR OF THE LIVE TERMINALS OF CHARGING SOCKET. 7. FUSE HOLDER WITH GLASS FUSE OF REPUTED MAKE (10.5amp) TO BE PROVIDED FOR (1+VE) AND (1-VE) SIDE TERMINAL IN CHARGING SOCKET. 8. PROTOTYPE SAMPLE SHALL BE GOT VALIDATED BEFORE COMMENCING BULK SUPPLY. 9. SWITCH PLATE ARE TO BE MOUNTED IN COACH IN VERTICAL POSITION, ACCORDINGLY MANUFACTURER'S INSTRUCTION SHALL BE EMBOSSED. 10. MARKING ON SWITCHES SHALL BE AS INDICATED IN DRAWING. 11. ALL DIMENSIONS IN MM.												
3 SWITCH PLATE ASSEMBLY COMPLETE WITH POLYCARBONATE COVER FRAME WITH 1 NOS. ON-OFF SWITCH & 1 NOS. 5-PIN SOCKET BA, 250V AC WITH 2 NOS. 0.5AMP GLASS FUSES WITH FUSE HOLDERS. 2 SWITCH PLATE ASSEMBLY COMPLETE WITH POLYCARBONATE COVER FRAME AND POWDER COATED STEEL PLATE WITH 4 NOS. SOCKET BA, 250V AC WITH 2 NOS. 0.5AMP GLASS FUSES WITH FUSE HOLDERS. 1 SWITCH PLATE ASSEMBLY COMPLETE WITH POLYCARBONATE COVER FRAME AND POWDER COATED STEEL PLATE WITH 4 NOS. ON-OFF SWITCH & 1 NOS. 5-PIN SOCKET BA, 250V AC WITH 2 NOS. 0.5AMP GLASS FUSES WITH FUSE HOLDERS.												
WELD. LENGTH NIL WEIGHT NIL S. AREA NIL NIL NIL NIL NIL NIL NIL NIL NIL NIL NIL												
DESCRIPTION: SWITCH PLATE ASSEMBLY ALONG WITH MOBILE CHARGING SOCKETS FOR SCN COACHES. FILE: D:\CC74247C.prt SUPPRESSED: CC74247C.prt												
RAIL COACH FACTORY, KAPURTHALA DRG. NO. CC74247 17/08/2010												

1. 5-PIN MOBILE CHARGING SOCKET WITHOUT LOCKING ARRANGEMENT SHALL BE PROVIDED.  
 2. WIRING FOR SWITCH & SOCKET CONNECTIVITY TO BE PROVIDED.  
 3. SWITCH & SOCKET SHALL BE SORBED ON BASE PLATE WITH MINIMUM M3 SCREWS COMPLETE WITH HEX NUT & SPRING WASHER.  
 4. SWITCH SHALL CONFORM TO IS3354-1997 & SOCKET SHALL CONFORM TO IS1293-2005 AND BOTH SHALL BE 1ST MARKED.  
 5. RED LED INDICATION TO BE PROVIDED IN CHARGING SOCKET SWITCH.  
 6. SHROUD TO BE PROVIDED ON THE REAR OF THE LIVE TERMINALS OF CHARGING SOCKET.  
 7. FUSE HOLDER WITH GLASS FUSE OF REPUTED MAKE (10.5amp) TO BE PROVIDED FOR (1+VE) AND (1-VE) SIDE TERMINAL IN CHARGING SOCKET.  
 8. PROTOTYPE SAMPLE SHALL BE GOT VALIDATED BEFORE COMMENCING BULK SUPPLY.  
 9. SWITCH PLATE ARE TO BE MOUNTED IN COACH IN VERTICAL POSITION, ACCORDINGLY MANUFACTURER'S INSTRUCTION SHALL BE EMBOSSED.  
 10. MARKING ON SWITCHES SHALL BE AS INDICATED IN DRAWING.  
 11. ALL DIMENSIONS IN MM.

DETAIL DRGS STARTING WITH "L1" ARE INTERNAL REFERENCE LISTS ONLY AND ARE NOT FOR ISSUE  
 ANY MANUAL ALTERATION SHALL AUTOMATICALLY RENDER THIS DRAWING INVALID.

FOR UNTOLERANCED DIMENSIONS REFER MDG0006 DATE OF FIRST ISSUE 17/08/2010



WELD LENGTH	ITEM	DESCRIPTION & DIMENSIONS	GROUP	DETAIL DRG	MTL. & SPEC.	REMARKS
NIL	2	FOR COACH ASSEMBLY COMPLETE WITH COATED STEEL PLATE WITH 2 NOS. CHERRY WITH 2 NOS. TO CLAMP TO LBS FUSES WITH AC FUSE HOLDERS.	ELECTRICAL	CC74253		NIL
NIL	1	FOR COACH ASSEMBLY COMPLETE WITH COATED STEEL PLATE WITH 2 NOS. CHERRY WITH 2 NOS. TO CLAMP TO LBS FUSES WITH AC FUSE HOLDERS.	ELECTRICAL	CC74253		NIL

11. 5-PIN MOBILE CHARGING SOCKET WITHOUT LOCKING ARRANGEMENT SHALL BE PROVIDED.  
 10. WIRING FOR SWITCH & SOCKET CONNECTIVITY TO BE PROVIDED.  
 9. SWITCH & SOCKET SHALL BE SCREWED ON BASE PLATE WITH MINIMUM M3 SCREWS COMPLETE WITH HEX. NUT & SPRING WASHER.  
 8. SWITCH SHALL CONFORM TO IS:3854-1997 & SOCKET SHALL CONFORM TO IS:1293-2005 AND BOTH SHALL BE ISI MARKED.  
 7. RED LED INDICATION TO BE PROVIDED IN CHARGING SOCKET SWITCH.  
 6. SHROUD TO BE PROVIDED ON THE REAR OF THE LIVE TERMINALS OF CHARGING SOCKET.  
 5. FUSE HOLDER WITH GLASS FUSE OF REPUTED MAKE (O.S.M.P) TO BE PROVIDED FOR PHASE. SIDE TERMINAL IN CHARGING SOCKET SHALL BE EMBOSSED.  
 4. PROTOTYPE SAMPLE SHALL BE GOT VALIDATED BEFORE COMMENCING BULK SUPPLY.  
 3. SWITCH PLATE ARE TO BE MOUNTED IN COACH IN VERTICAL POSITION, ACCORDINGLY MANUFACTURER'S INSIGNIA SHALL BE EMBOSSED.  
 2. MARKING ON SWITCHES SHALL BE AS INDICATED IN DRAWING.  
 1. ALL DIMENSIONS IN MM.

DETAIL DRGS STARTING WITH "LI" ARE INTERNAL REFERENCE LISTS ONLY AND ARE NOT FOR ISSUE  
 ANY MANUAL ALTERATION SHALL AUTOMATICALLY RENDER THIS DRAWING INVALID.  
 FOR UNTOLERANCED DIMENSIONS REFER MDG0008 DATE OF FIRST ISSUE 14/01/2017

SWITCH PLATE ASSEMBLY  
 TO DOCUMENT NO. EDML-086.REV.-6,  
 FOR LHB EOG NON-AC GS ANTYODAYA COACH  
 RAIL COACH FACTORY, KAPURTHALA  
 रेल कोच कारखाना, कपूरथला

DRG. NO. CC74253  
 PL. NO. NIL  
 REF. DRG. F/NIL

SCALE	ISSUED	REVISED	BY	DATE
1:1				

NO.	DATE	BY	DATE
1	14/01/2017		

**Amendment No.- 1**

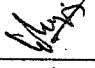
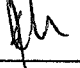
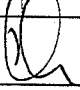
**Amendment No-1 to EDML No.-086, Rev-6 for Switch Plate assembly along with Mobile charging sockets for Conventional & LHB type SCN/Antyodaya GS Coaches.**

This Amendment is issued to EDML No.-086, Rev-6 for Switch Plate assembly along with Mobile charging sockets for Conventional & LHB type SCN/Antyodaya GS Coaches to incorporate the following modifications:-

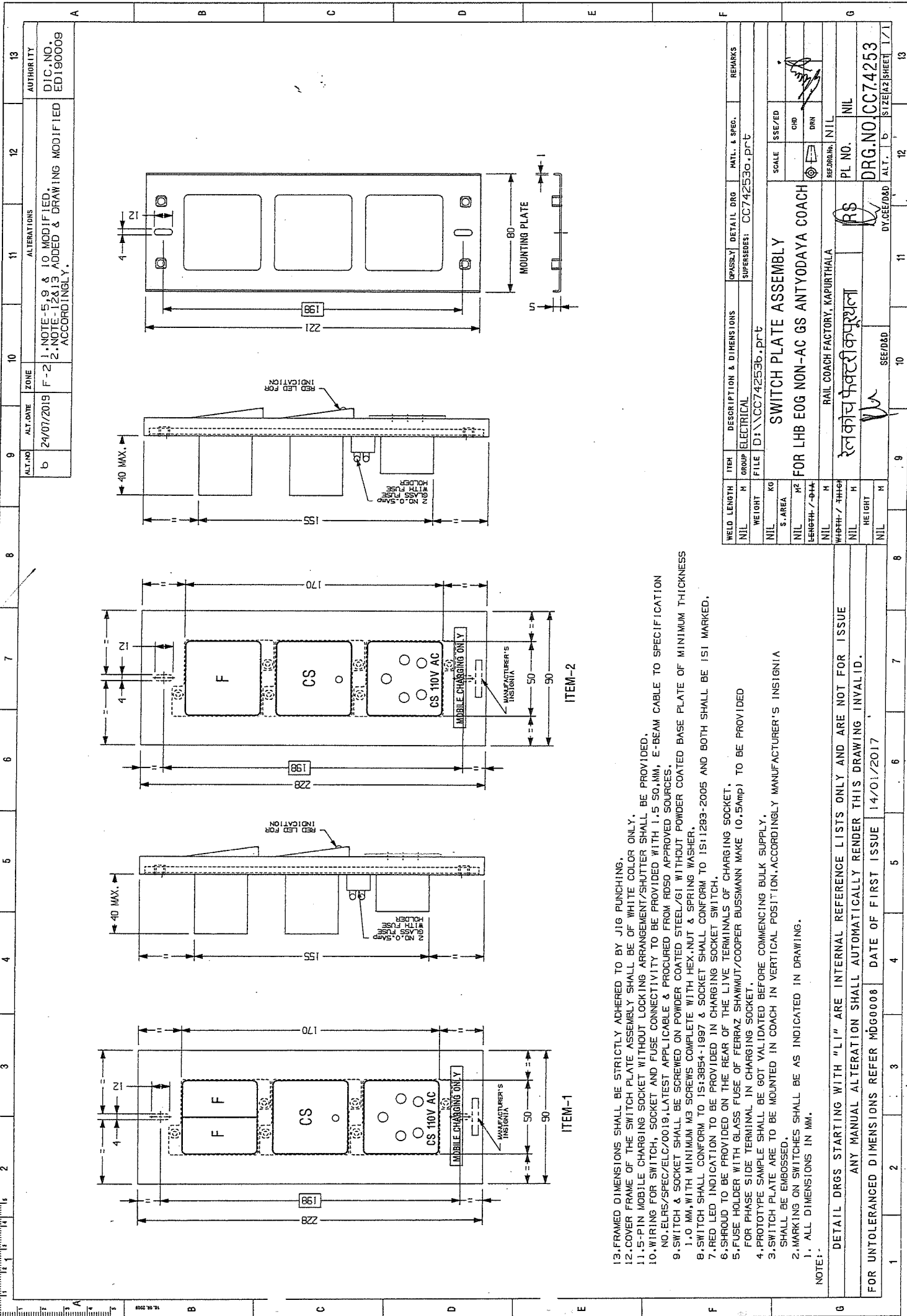
1. Following drawings amended as follows :-
  - i) Drg no. CC74253, Alt-'a' may be read as Drg no. CC74253, Alt-'b'.
  - ii) Drg no. CC74247, Alt-'c' may be read as Drg no. CC74247, Alt-'d'.

**Test:-**

2. Following test shall be conducted from Govt./NABL accredited lab:-
  - i) Test for Polymer identification of FR Polycarbonate material.
  - ii) Fire retardant test to grade UL-94 V0 from the OEM of the raw material.
  - iii) Test for composition of contact Material (fixed and moving).

EDML-086	06	1	24-07-2019				1 of 1
Doc. No.	Rev.	Am.	Date	SSE/NAC	SEE/D	DY.CEE/D&D	Page





13. FRAMED DIMENSIONS SHALL BE STRICTLY ADHERED TO BY JIG PUNCHING.
  12. COVER FRAME OF THE SWITCH PLATE ASSEMBLY SHALL BE OF WHITE COLOR ONLY.
  11. 5-PIN MOBILE CHARGING SOCKET WITHOUT LOCKING ARRANGEMENT/SHUTTER SHALL BE PROVIDED.
  10. WIRING FOR SWITCH, SOCKET AND FUSE CONNECTIVITY TO BE PROVIDED WITH 1.5 SQ.MM, E-BEAM CABLE TO SPECIFICATION NO. ELRS/SPEC/ELC/0019, LATEST APPLICABLE & PROCURED FROM RDSO APPROVED SOURCES.
  9. SWITCH & SOCKET SHALL BE SCREWED ON POWDER COATED STEEL/GI WITHOUT POWDER COATED BASE PLATE OF MINIMUM THICKNESS 1.0 MM, WITH MINIMUM M3 SCREWS COMPLETE WITH HEX. NUT & SPRING WASHER.
  8. SWITCH SHALL CONFORM TO IS:3854-1997 & SOCKET SHALL CONFORM TO IS:1283-2005 AND BOTH SHALL BE ISI MARKED.
  7. RED LED INDICATION TO BE PROVIDED IN CHARGING SOCKET SWITCH.
  6. SHROUD TO BE PROVIDED ON THE REAR OF THE LIVE TERMINALS OF CHARGING SOCKET.
  5. FUSE HOLDER WITH GLASS FUSE OF FERRAZ SHAWMUT/COOPER BUSSMANN MAKE (0.5amp) TO BE PROVIDED FOR PHASE SIDE TERMINAL IN CHARGING SOCKET.
  4. PROTOTYPE SAMPLE SHALL BE GOT VALIDATED BEFORE COMMENCING BULK SUPPLY.
  3. SWITCH PLATE ARE TO BE MOUNTED IN COACH IN VERTICAL POSITION, ACCORDINGLY MANUFACTURER'S INSIGNA SHALL BE EMBOSSED.
  2. MARKING ON SWITCHES SHALL BE AS INDICATED IN DRAWING.
- NOTE: 1. ALL DIMENSIONS IN MM.

DETAIL DRGS STARTING WITH "LI" ARE INTERNAL REFERENCE LISTS ONLY AND ARE NOT FOR ISSUE  
 ANY MANUAL ALTERATION SHALL AUTOMATICALLY RENDER THIS DRAWING INVALID.  
 FOR UNTOLERANCED DIMENSIONS REFER MDDG0008 DATE OF FIRST ISSUE 14/01/2017

ITEM	GROUP	DESCRIPTION & DIMENSIONS	ASSEMBLY	DETAIL DRG	MATL. & SPEC.	REMARKS
NIL	M	ELECTRICAL				
FILE	D:\CC74253b.prt					
WELD LENGTH	NIL					
WEIGHT	NIL					
S. AREA	NIL					
LENGTH / DIA	NIL					
WIDTH / THICK	NIL					
HEIGHT	NIL					
SWITCH PLATE ASSEMBLY FOR LHB EOG NON-AC GS ANTYODAYA COACH RAIL COACH FACTORY, KAPURTHALA रेल कोच फ़ैक्टरी कपूरथला						
SCALE	1:1					
DRN	[Signature]					
CHK	[Signature]					
PL NO.	NIL					
DRG. NO.	CC74253					
SIZE	A2					
SHEET	1/1					

ALT. NO.	ZONE	ALTERATIONS	AUTHORITY
b	F-2	1. NOTE-5, 9 & 10 MODIFIED. 2. NOTE-1, 2 & 3, ADDED & DRAWING MODIFIED ACCORDINGLY.	DIC. NO. ED190009
24/07/2019			