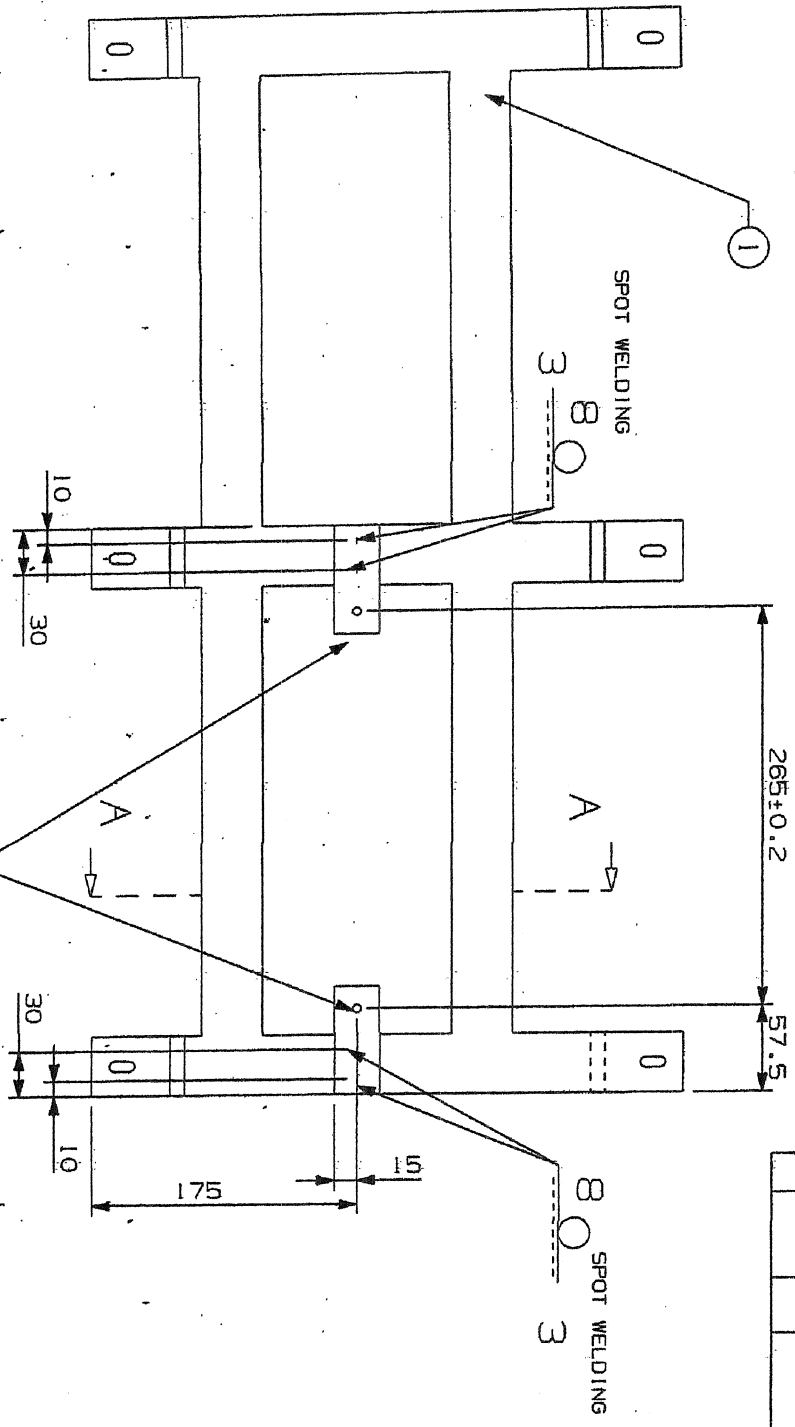


**TERMINAL STRIP FOR 2-TIER AC LHB COACHES**

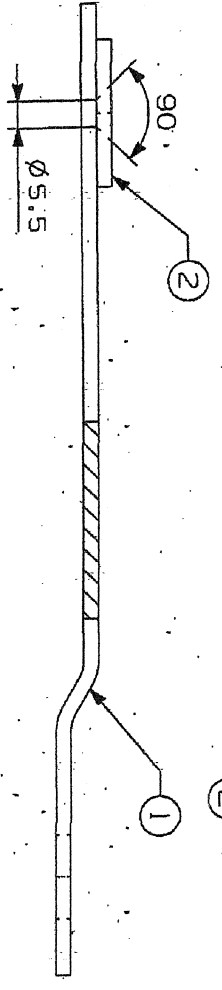
S.No.	ITEM DESCRIPTION	DRG./SPEC. NO.	UNIT	QTY.	REMARKS
1.	4-Conductor terminal strip 2.5 sq.mm. (17-pole)	4-Conductor terminal block: Cat. no. 261-331 (17 nos.) End plate: Cat. no. 261-361 (1 no.) of M/s Wago/Phoenix/ Weidmuller or equivalent approved make	1	9	For compartment lighting/mobile charging points in transverse berths/chain pull alarm circuit
2.	4-Conductor terminal strip 2.5 sq.mm. (10-pole)	Cat.no. 261-210 of M/s Wago/Phoenix/Weidmuller or equivalent approved make	1	9	For Berth reading lights
3.	4-Conductor terminal strip 2.5 sq.mm. (3-pole)	Cat.no. 261-203 of M/s Wago/Phoenix/Weidmuller or equivalent approved make	1	9	For mobile charging points in longitudinal berths
4.	Flat connecting complete (With bracket to drawing no. CC72431)	CC72428	1	2	For PA system (Vestibule area)

EDML-033	E	24.07.2019	<i>Bam.</i>	<i>pu</i>	<i>Q</i>	1 of 1
Document No.	Rev.	Date	SSE/CAD	SEE/D	Dy.CEE/D&D	Page

ALT.NO	ALT.DT	ZONE	ALTERATIONS	AUTHORITY
NIL	NIL	NIL	NIL	NIL



A-A 1:2

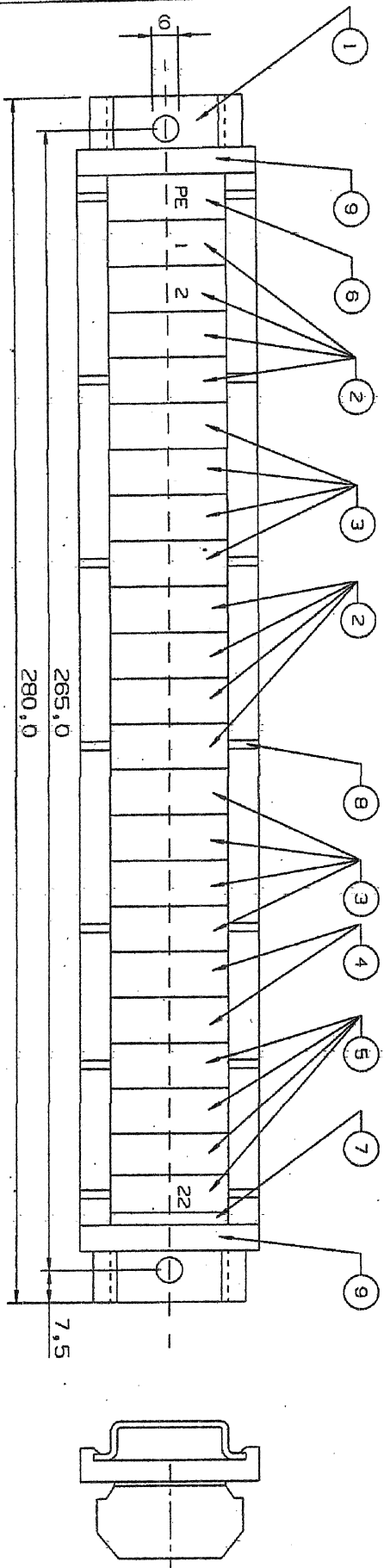


WELD LENGTH	THICK	DESCRIPTION & DIMENSIONS	GRADE	DETAIL DRG	REMARKS
NIL	N	BRACKET	SS-304	NIL	NIL
NIL	N	ELECTRICAL	SS-304	NIL	NIL

BRACKET COMPLETE

DETAIL DRGS STARTING WITH "L1" ARE INTERNAL REFERENCE LISTS ONLY AND ARE NOT FOR ISSUE.  
 THIS IS A COMPUTER GENERATED DRAWING. ANY MANUAL ALTERATION SHALL AUTOMATICALLY RENDER IT INVALID.  
 FOR UNTOLERANCED DIMENSIONS REFER MDG0008 DATE OF FIRST ISSUE 17/10/2015

RAIL COACH FACTORY, KAPURTHALA	PL NO. NIL	REF. DRG. NO. 2, 10, 13, D, 76, 095, 030
रामदास कपूरथला	DRG. NO. CC72431	ATT. INIT. SURESH
Swati SINGH		



ALT. NO.	ALT. DATE	ZONE	ALTERNATIVES	AUTHORITY
NIL	NIL	NIL	NIL	NIL

10	DESIGNATION PLATE.	1	PE.1-22 WHITE	NIL	M/S WAGO OR OTHER APPROVED MAKE
9	END STOP.	2	CAT. NO. 209-137 8.5 MM WIDE, GREY.	NIL	M/S WAGO OR OTHER APPROVED MAKE
8	MOUNTING ADAPTER.	7	CAT. NO. 209-120, 6 MM WIDE, GREY.	NIL	M/S WAGO OR OTHER APPROVED MAKE
7	END PLATE WITH FIXING FLANGE.	1	CAT. NO. 282-371, COLOUR GREY	NIL	M/S WAGO OR OTHER APPROVED MAKE
6	4-CONDUCTOR TERMINAL BLOCK	1	CAT. NO. 282-347, 4 SODM GREEN YELLOW	NIL	M/S WAGO OR OTHER APPROVED MAKE
5	4-CONDUCTOR TERMINAL BLOCK	4	CAT. NO. 282-341 4 SODM GREEN YELLOW	NIL	M/S WAGO OR OTHER APPROVED MAKE
4	4-CONDUCTOR TERMINAL BLOCK	2	CAT. NO. 281-348, 2.5 SODM COLOUR ORANGE	NIL	M/S WAGO OR OTHER APPROVED MAKE
3	4-CONDUCTOR TERMINAL BLOCK	8	CAT. NO. 281-343, 2.5 SODM COLOUR GREY	NIL	M/S WAGO OR OTHER APPROVED MAKE
2	4-CONDUCTOR TERMINAL BLOCK	8	CAT. NO. 281-341, 2.5 SODM COLOUR GREY	NIL	M/S WAGO OR OTHER APPROVED MAKE
1	SUPPORTING RAIL	1	CAT. NO. 210-228	NIL	M/S WAGO OR OTHER APPROVED MAKE

NOTE:- ALL DIMENSIONS IN MM.

DETAIL DRS STARTING WITH 'L1' ARE INTERNAL REFERENCE LISTS ONLY AND ARE NOT FOR ISSUE. THIS IS A COMPUTER GENERATED DRAWING. ANY MANUAL ALTERATION SHALL AUTOMATICALLY RENDER IT INVALID. FOR UNTOLERANCED DIMENSIONS REFER MDG0008 DATE OF FIRST ISSUE 15/10/2015

RAIL COACH FACTORY, KAPURTHALA

PL NO. NIL  
DRG. NO. CC 72428

SCALE: 1:1

DATE: 15/10/2015

DESIGNED BY: [Signature]

CHECKED BY: [Signature]

APPROVED BY: [Signature]