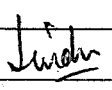
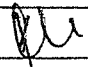



Feeder junction box set with accessories for LHB type Power car (HOG Compliant)

S.NO.	DESCRIPTION	SIZE	DRG/SPEC/CAT NO.	QTY
1.	Feeder junction box-Plug side	-	LW71006 Alt 'j'	02
2.	Feeder junction box-Plug side	-	LW71043 Alt 'a'	01
3.	Feeder junction box- Socket side	-	LW71007 Alt 'j'	01
4.	Flexible hose	ID=75mm	IS:444-87, Type-1, Tab-1	15 M
5.	Circlip (for rubber hose)	-	NORMA 70-90	08
6.	Blank plug complete with gasket	PG16	A-18, item-4 *#	03
7.	Lock nut	PG16	A-10, item-4 * #	03
8.	Cable gland complete with sealing, O ring of neoprene and flat gasket (for Earthing cables)	PG21	SKED-609 *	04
9.	Lock nut (for Earthing cables)	PG21	A-10, item-5 * #	04
10.	Elbow 90° complete with gasket (for C1, C2 control cables)	PG16	A-4, item-3 * #	04
11.	Lock nut (for C1, C2 control cables)	PG16	A-10, item-4 * #	04
12.	Elbow 90° complete with gasket (For Limit Switch)	PG13.5	A-4, item-4 * #	01
13.	Lock nut(For Limit Switch)	PG13.5	A-10, item-3 * #	01
14.	Flexible conduit connector complete with gasket (For Limit Switch)	M20	A-5, item-5 * #	01
15.	Hex. Hd. Screw (Stainless steel to IS:1367-2002,P-14,A2-70)	M12x20	IS:1363-2002,P-2,T-1 *	04
16.	Polyamide flexible conduit (For Limit Switch)	NW 17	A-1, item-3 #	0.3 M
17.	Adaptor for flexible conduit (For plug side)	-	A-12, item-1 #	03
18.	Crimping socket	150 sq.mm	EDTS-200,AM-2,COR-2,(item-1)	36
19.	Crimping socket	95 sq.mm	EDTS-200,AM-2,COR-2,(item-19)	12
20.	Crimping socket	70 sq.mm	EDTS-200,AM-2,COR-2,(item-7)	04
21.	Crimping socket	70 sq.mm	EDTS-200,AM-2,COR-2,(item-18)	12

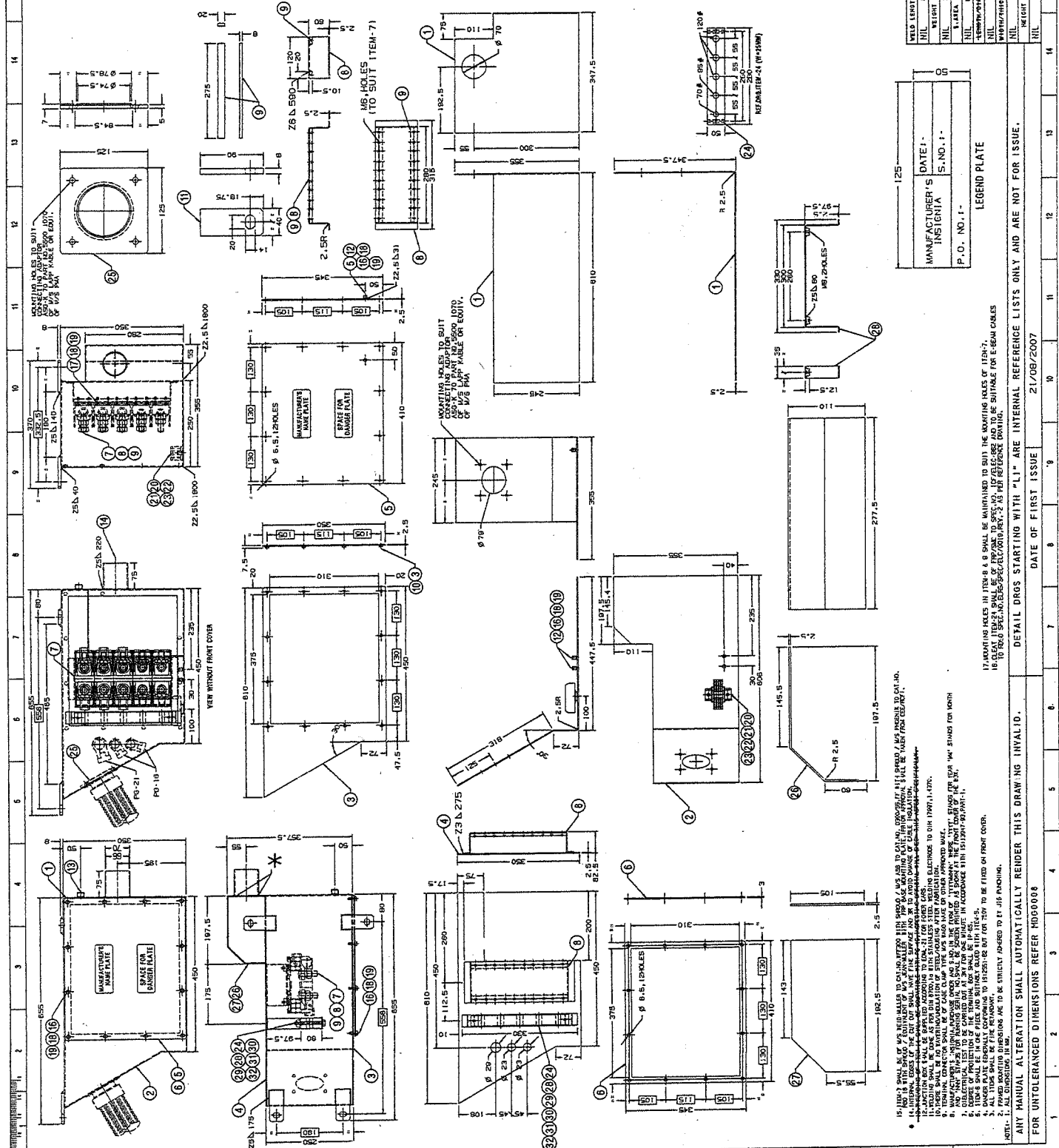
Note:- 1) * Items to be supplied duly fitted with junction boxes.

2) # Items to be supplied as per spec no. RDSO/PE/SPEC/AC-0138-2009 (Rev.-1).

EDML-021	M	24.07.2019				1 OF 1
Doc. no.	Rev.	Date	SSE/CAD	SEE/CAD	Dy.CEE/D&D	Page

1. SPEC. FOR SS MATERIAL REVISED FROM 151891-02, GR-304L TO ED190007
 2. NOTE-12, MODIFIED & NOTE-13 DELETED.
 3. ITEM-15 DELETED & DRAWING MODIFIED ACCORDINGLY.

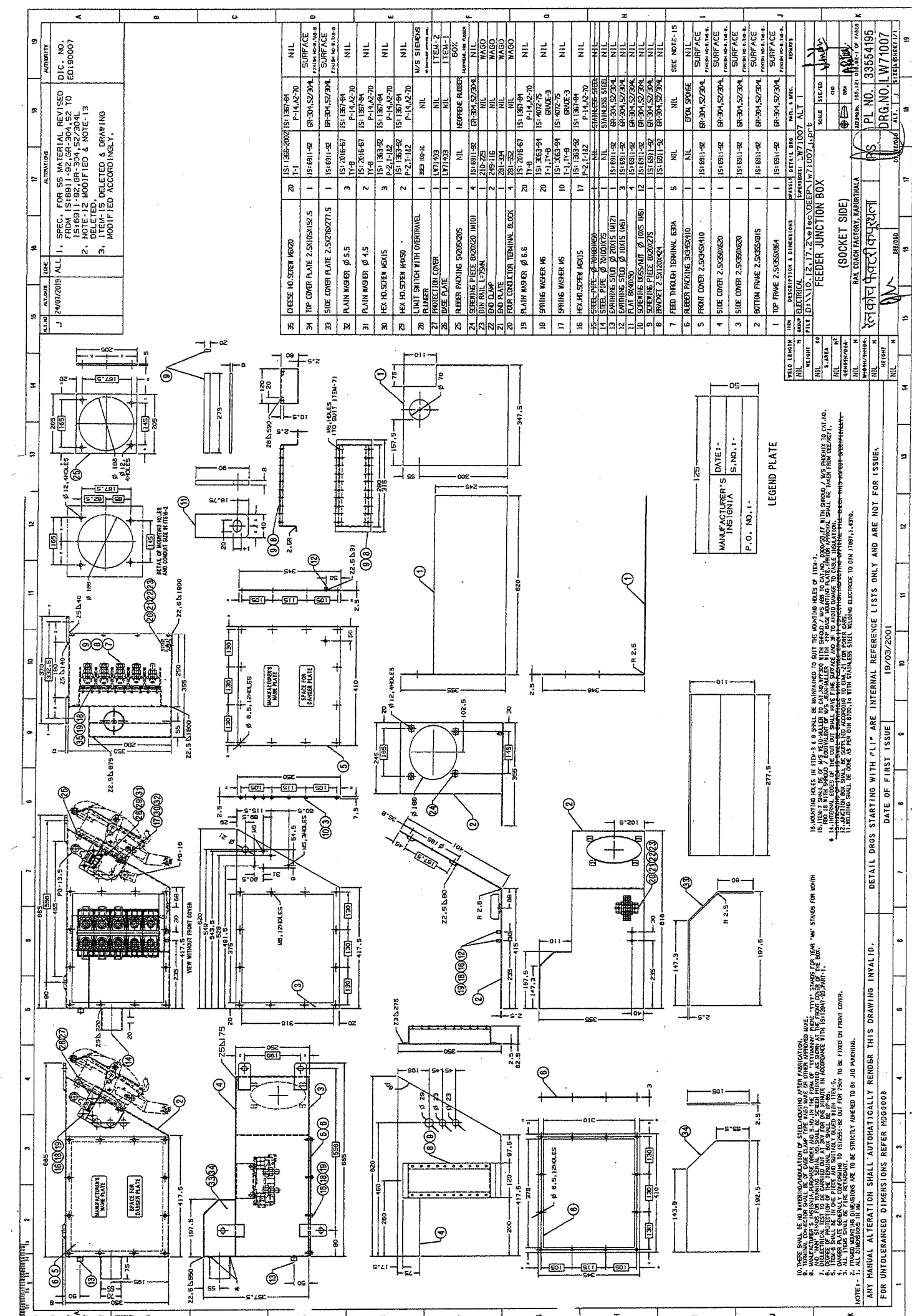
ITEM	QTY	DESCRIPTION	UNIT	REV	DATE	BY	CHK	APP	REMARKS
32	2	151-285-2005	NIL						NIL
31	2	151-2016-67	NIL						NIL
30	2	151-363-94	NIL						NIL
29	2	151-183-92	NIL						NIL
28	1	151-1012	NIL						NIL
27	1	151-891-92	NIL						NIL
26	1	151-891-92	NIL						NIL
25	1	151-891-92	NIL						NIL
24	1	151-891-92	NIL						NIL
23	1	151-891-92	NIL						NIL
22	1	151-891-92	NIL						NIL
21	1	151-891-92	NIL						NIL
20	1	151-891-92	NIL						NIL
19	1	151-891-92	NIL						NIL
18	1	151-891-92	NIL						NIL
17	1	151-891-92	NIL						NIL
16	1	151-891-92	NIL						NIL
15	1	151-891-92	NIL						NIL
14	1	151-891-92	NIL						NIL
13	1	151-891-92	NIL						NIL
12	1	151-891-92	NIL						NIL
11	1	151-891-92	NIL						NIL
10	1	151-891-92	NIL						NIL
9	1	151-891-92	NIL						NIL
8	1	151-891-92	NIL						NIL
7	1	151-891-92	NIL						NIL
6	1	151-891-92	NIL						NIL
5	1	151-891-92	NIL						NIL
4	1	151-891-92	NIL						NIL
3	1	151-891-92	NIL						NIL
2	1	151-891-92	NIL						NIL
1	1	151-891-92	NIL						NIL



MANUFACTURER'S DATE: _____
 INSTANTIA S.NO. 1-1-_____
 P.O. NO. 1-_____
 LEGEND PLATE

17. MOUNTING HOLES IN ITEM 8 & 9 SHALL BE MAINTAINED TO SUIT THE MOUNTING HOLES OF ITEM-7.
 18. CLEAR ITEM 24 SHALL BE OF 150MM TO 200MM TO BE SUITABLE FOR E-BAY CABLES TO PASS SPECIALLY SPECIFIED AND APPROVED FOR REFERENCE DRAWING.

1. ALL DIMENSIONS IN MILLIMETERS ARE TO BE STRICTLY ADHERED TO BY THE FABRICATOR.
 2. ALL DIMENSIONS IN MILLIMETERS ARE TO BE STRICTLY ADHERED TO BY THE FABRICATOR.
 3. ALL DIMENSIONS IN MILLIMETERS ARE TO BE STRICTLY ADHERED TO BY THE FABRICATOR.
 4. ALL DIMENSIONS IN MILLIMETERS ARE TO BE STRICTLY ADHERED TO BY THE FABRICATOR.
 5. ALL DIMENSIONS IN MILLIMETERS ARE TO BE STRICTLY ADHERED TO BY THE FABRICATOR.



REV.	DATE	DESCRIPTION	BY	CHECKED	APPROVED
1	15/11/10	ISSUED FOR FABRICATION			
2	15/11/10	REVISED DRAWING			
3	15/11/10	REVISED DRAWING			
4	15/11/10	REVISED DRAWING			
5	15/11/10	REVISED DRAWING			
6	15/11/10	REVISED DRAWING			
7	15/11/10	REVISED DRAWING			
8	15/11/10	REVISED DRAWING			
9	15/11/10	REVISED DRAWING			
10	15/11/10	REVISED DRAWING			
11	15/11/10	REVISED DRAWING			
12	15/11/10	REVISED DRAWING			
13	15/11/10	REVISED DRAWING			
14	15/11/10	REVISED DRAWING			
15	15/11/10	REVISED DRAWING			
16	15/11/10	REVISED DRAWING			
17	15/11/10	REVISED DRAWING			
18	15/11/10	REVISED DRAWING			
19	15/11/10	REVISED DRAWING			

1. SPEC. FOR SS MATERIAL REVISED FROM IS 1681-1-92, ER-304, 52/304, 151681-1-92, ER-304, 52/304, 2. NOTE-12 MODIFIED & NOTE-13 DELETED. 3. ITEM-15 DELETED & DRAWING MODIFIED ACCORDINGLY.

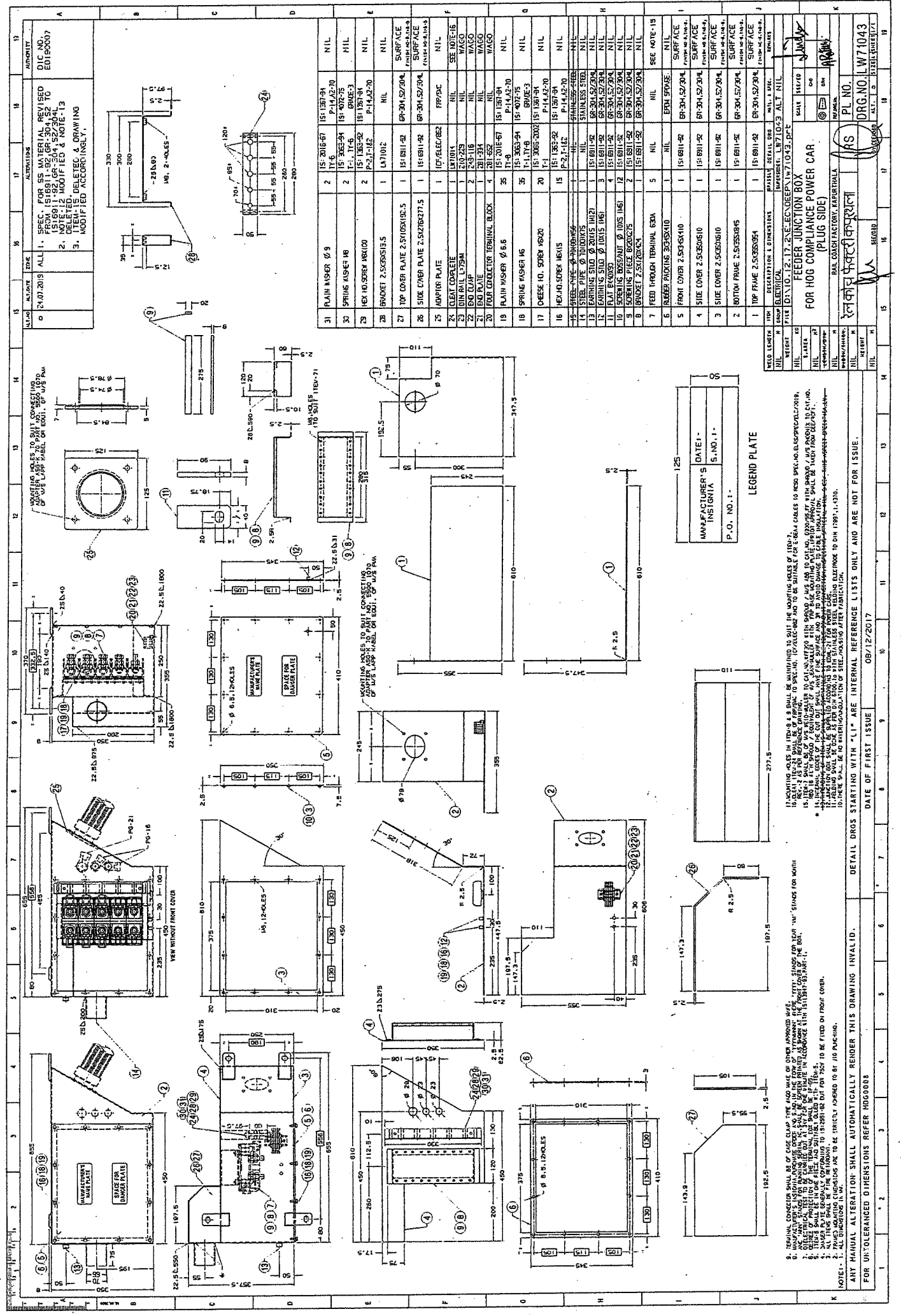
FEEDER JUNCTION BOX (SOCKET SIDE)

RAIL COACH FACTORY, KAPURTHALA

PL. NO. 133554195
 DRG. NO. LW71007

DATE OF FIRST ISSUE: 19/03/2001

FOR UNTOLERANCED DIMENSIONS REFER MD00008



ITEM NO.	DESCRIPTION	QTY.	UNIT	REMARKS
1	FRONT COVER 2.5X3.0X10	1	PC	BR-304.52/304
2	SIDE COVER 2.5X3.0X10	1	PC	BR-304.52/304
3	SIDE COVER 2.5X3.0X10	1	PC	BR-304.52/304
4	BOTTOM FRAME 2.5X3.0X10	1	PC	BR-304.52/304
5	TOP FRAME 2.5X3.0X10	1	PC	BR-304.52/304
6	FEEDER PINNING 3.0X3.0X10	1	PC	BR-304.52/304
7	FRONT COVER 2.5X3.0X10	1	PC	BR-304.52/304
8	SIDE COVER 2.5X3.0X10	1	PC	BR-304.52/304
9	SIDE COVER 2.5X3.0X10	1	PC	BR-304.52/304
10	BOTTOM FRAME 2.5X3.0X10	1	PC	BR-304.52/304
11	TOP FRAME 2.5X3.0X10	1	PC	BR-304.52/304
12	FEEDER PINNING 3.0X3.0X10	1	PC	BR-304.52/304
13	FRONT COVER 2.5X3.0X10	1	PC	BR-304.52/304
14	SIDE COVER 2.5X3.0X10	1	PC	BR-304.52/304
15	SIDE COVER 2.5X3.0X10	1	PC	BR-304.52/304
16	BOTTOM FRAME 2.5X3.0X10	1	PC	BR-304.52/304
17	TOP FRAME 2.5X3.0X10	1	PC	BR-304.52/304
18	FEEDER PINNING 3.0X3.0X10	1	PC	BR-304.52/304
19	FRONT COVER 2.5X3.0X10	1	PC	BR-304.52/304
20	SIDE COVER 2.5X3.0X10	1	PC	BR-304.52/304
21	SIDE COVER 2.5X3.0X10	1	PC	BR-304.52/304
22	BOTTOM FRAME 2.5X3.0X10	1	PC	BR-304.52/304
23	TOP FRAME 2.5X3.0X10	1	PC	BR-304.52/304
24	FEEDER PINNING 3.0X3.0X10	1	PC	BR-304.52/304
25	FRONT COVER 2.5X3.0X10	1	PC	BR-304.52/304
26	SIDE COVER 2.5X3.0X10	1	PC	BR-304.52/304
27	SIDE COVER 2.5X3.0X10	1	PC	BR-304.52/304
28	BOTTOM FRAME 2.5X3.0X10	1	PC	BR-304.52/304
29	TOP FRAME 2.5X3.0X10	1	PC	BR-304.52/304
30	FEEDER PINNING 3.0X3.0X10	1	PC	BR-304.52/304
31	FRONT COVER 2.5X3.0X10	1	PC	BR-304.52/304

IF MOUNTING HOLES IN ITEM 9 & 8 SHALL BE MAINTAINED TO SUIT THE MOUNTING HOLE OF ITEM 7.
 1. TERMINAL CONNECTOR SHALL BE OF CAGE CLAMP TYPE AND OF OTHER APPROVED TYPE.
 2. MAIN SWITCH FOR MAINLINE SHALL BE OF THE TYPE AS SHOWN IN THE FRONT COVER OF THE BOX.
 3. FUSES SHALL BE OF THE TYPE AS SHOWN IN THE FRONT COVER OF THE BOX.
 4. BUSES SHALL BE OF THE TYPE AS SHOWN IN THE FRONT COVER OF THE BOX.
 5. USE OF PROTECTIVE COATING ON THE TERMINAL BLOCK SHALL BE FOR PROTECTION.
 6. THE FRONT COVER SHALL BE OF THE TYPE AS SHOWN IN THE FRONT COVER OF THE BOX.
 7. THE SIDE COVER SHALL BE OF THE TYPE AS SHOWN IN THE FRONT COVER OF THE BOX.
 8. THE BOTTOM FRAME SHALL BE OF THE TYPE AS SHOWN IN THE FRONT COVER OF THE BOX.
 9. THE TOP FRAME SHALL BE OF THE TYPE AS SHOWN IN THE FRONT COVER OF THE BOX.
 10. THERE SHALL BE NO WATER PENETRATION OF THE BOX AFTER FABRICATION.

DATE OF FIRST ISSUE: 09/12/2017
 INTERNAL REFERENCE LIST IS ONLY AND ARE NOT FOR ISSUE.
 ANY MANUAL ALTERATION SHALL AUTOMATICALLY RENDER THIS DRAWING INVALID.
 FOR UN-TOLERANCED DIMENSIONS REFER HDG00008

LEGEND PLATE

MANUFACTURER'S NAME: INSTONIA
 DATE: 15.10.17
 P.O. NO. 11

FOR UN-TOLERANCED DIMENSIONS REFER HDG00008

DATE OF FIRST ISSUE: 09/12/2017

INTERNAL REFERENCE LIST IS ONLY AND ARE NOT FOR ISSUE.

ANY MANUAL ALTERATION SHALL AUTOMATICALLY RENDER THIS DRAWING INVALID.

FOR UN-TOLERANCED DIMENSIONS REFER HDG00008

PRG. NO. LW71043
 REV. NO. 01
 DATE: 15/10/17