

Set of switch plate assembly for LHB EOG LSLRD Non-AC coach:-

Switch plate assembly for control of fan and mobile charging socket only from alternate bay of LHB EOG LSLRD Non-AC coach.

Item No.	Description	Qty.	Marking	Reference drawing
1.	Switch plate assembly complete with polycarbonate cover frame and powder coated steel plate/GI plate without powder coated base plate of minimum thickness 1.0 mm with 4 nos. ON-OFF switches and 2 Nos. 5-Pin socket 6A, 250V AC with 04 nos. 0.5 amp glass fuses with holder.	1 set (comprising of 7 switch plates)	F,F CS,CS CS 110V AC/DC	CC74248, Alt 'd'
2.	Switch plate assembly complete with polycarbonate cover frame and powder coated steel plate/GI plate without powder coated base plate of minimum thickness 1.0 mm with 3 nos. ON-OFF switches and 2 nos. 5-pin socket 6A, 250V AC with 4 nos. 0.5 amp glass fuses with holder.	1 set (comprising of 4 switch plates)	F CS,CS CS 110V AC/DC	CC74249, Alt 'd'



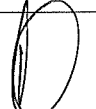
Packing conditions of switch plates shall be as follows:-

Stage 1: Standard packing of switch plates mentioned above shall be as per packing conditions document no. PI042.

Stage 2: Packing per coach set shall be as per packing conditions to document no. PI021. Each packing shall be legibly marked for the type of coach applicable for.

Stage 3: Bulk packing coach wise shall be as per packing conditions to document no. PI032. Each packing shall be legibly marked for the type of coach/coaches applicable for.

- N.B. : i) Firm shall get prototype sample approved from CEDE/RCF before commencing bulk supply.
 ii) Switches shall be conforming to IS: 3854-1997 and sockets shall be conforming to IS: 1293-2005 and both shall be 'ISI' marked.
 iii) Red colour LED indication shall be provided in charging socket switch.
 iv) 5-pin mobile charging socket without locking arrangement/shutter shall be provided.
 v) Wiring for switch, socket & fuse connectivity to be provided with 1.5 sq.mm. E-Beam cable to specification no. ELRS/SPEC/ELC/0019, latest applicable & procured from RDSO approved sources.
 vi) Cover frame of the switch plate assembly shall be of white color only.
 vii) Glass fuse provided shall be of M/s Ferraz Shawmut or M/s Cooper Bussmann make with holder.

EDML-169	Nil	20.11.2019				Page 1 of 2
Document No.	Rev.	Date	SSE/CAD	SEE/D	Dy.CEE/D&D	Page No.

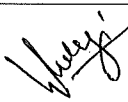
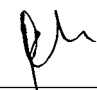

(8/11)

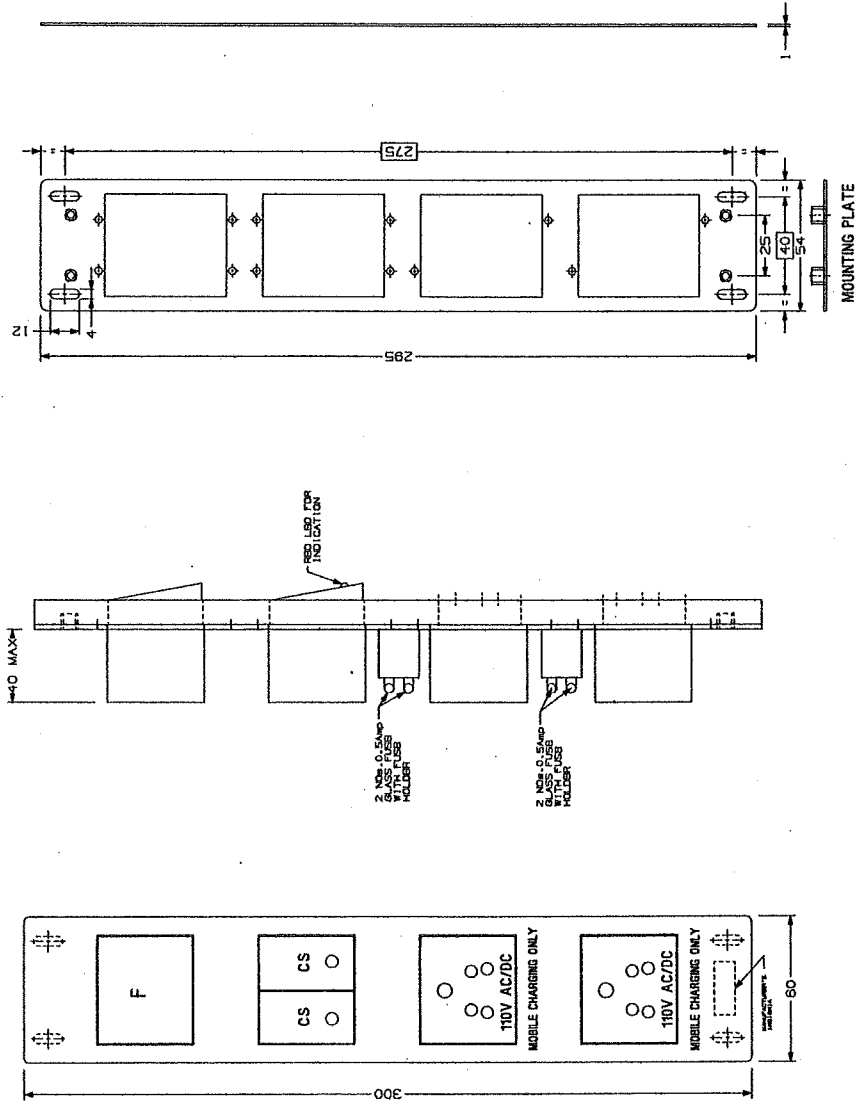
Set of switch plate assembly for LHB EOG LSLRD Non-AC coach:-

Tests:-

Following test shall be conducted from Govt./NABL accredited lab :-

1. Test for Polymer identification of FR polycarbonate material.
2. Fire retardant test to grade UL-94 V0 from the OEM of the raw material.
3. Test for composition of contact material (fixed and moving).

EDML-169	Nil	20.11.2019				Page 2 of 2
Document No.	Rev.	Date	SSE/CAD	SEE/D	Dy.CEE/D&D	Page No.



13. SWITCH PLATE ARE TO BE MOUNTED IN COACH IN VERTICAL POSITION, ACCORDINGLY MANUFACTURER'S INSTG/JA SHALL BE EMBOSSED.
14. PROTOTYPE SAMPLE SHALL BE GOT VALIDATED BEFORE COMMENCING BULK SUPPLY.
15. 5-PIN MOBILE CHARGING SOCKET WITHOUT LOCKING ARRANGEMENT/SHUTTER SHALL BE PROVIDED.
16. COVER FRAME OF THE SWITCH PLATE ASSEMBLY SHALL BE OF WHITE COLOR ONLY.
17. RED INDICATION FOR THE SWITCH PLATE ASSEMBLY SHALL BE OF WHITE COLOR ONLY.
18. RED INDICATION FOR THE CHARGING SOCKET SWITCH SHALL BE PROVIDED IN CHARGING SOCKET SWITCH.
19. SHROUD TO BE PROVIDED ON THE REAR OF THE LIVE TERMINAL OF CHARGING SOCKET.
20. FUSE HOLDER WITH GLASS FUSE OF REPUTED MAKE (10.5amp) TO BE PROVIDED FOR (+VE) AND (-VE) SIDE TERMINAL IN CHARGING SOCKET.
21. WIRING FOR SWITCH, SOCKET AND FUSE CONNECTIVITY TO BE PROVIDED WITH 1.5 SQ. MM. E-BEAM CABLE TO SPECIFICATION NO. ELRS/SPEC/ELC/0019, LATEST APPLICABLE & PROCURED FROM ROSO APPROVED SOURCES.
22. MARKING ON SWITCHES SHALL BE AS INDICATED IN DRAWING.
23. SWITCH & SOCKET SHALL BE SCREWED ON POWDER COATED STEEL/GI WITHOUT POWDER COATED BASE PLATE OF MINIMUM THICKNESS 1.0 MM. WITH MINIMUM M3 SCREWS COMPLETE WITH HEX-NUT & SPRING WASHER.
24. FRAMED DIMENSIONS SHALL BE STRICTLY ADHERED TO BY JIG PUNCHING.
25. ALL DIMENSIONS IN MM.

NOTE :-

DETAIL DRGS STARTING WITH "LI" ARE INTERNAL REFERENCE LISTS ONLY AND ARE NOT FOR ISSUE
 ANY MANUAL ALTERATION SHALL AUTOMATICALLY RENDER THIS DRAWING INVALID.

FOR UNTOLERANCED DIMENSIONS REFER MDG0008 DATE OF FIRST ISSUE 14/01/2017

13	12	11	10	9	8	7	6	5	4	3	2	1	
AUTHORITY		ALTERATIONS		ZONE		ALT. DATE		ALT. NO.		F-1		d	
D.C. NO. ED190009		1. NOTE-3, 5, 9 & 10 UPDATED 2. NOTE-11, 12 & 13 ADDED & DRAWING MODIFIED ACCORDINGLY.											
WELD LENGTH		DESCRIPTION & DIMENSIONS		GROUP		DETAIL DRG		MATERIAL & SPEC.		REMARKS			
NIL		ELECTRICAL		ELECTRICAL		CC74249c.prt		CC74249c.prt		NIL			
WEIGHT		SCALE		SSE/ED		CHD		DRM		REF. DRG.		NIL	
NIL		SWITCH PLATE ASSEMBLY (CORRIDOR SIDE)		NIL		NIL		NIL		NIL		NIL	
S. AREA		(FOR LHB EOG GS & LHB SG NON-AC COACHES)		NIL		NIL		NIL		NIL		NIL	
LENGTH / DIA		RAIL COACH FACTORY, KAPURTHALA		NIL		NIL		NIL		NIL		NIL	
HEIGHT		रेल कोच फ़ैक्टरी कपूरथला		NIL		NIL		NIL		NIL		NIL	
PL NO.		DRG NO. CC74249		ALT. NO.		SIZE		A2		SHEET		1/1	
SEE/D&D		M		9		10		11		12		13	