

Switch plate assembly alongwith mobile sockets for LHB EOG NON-AC coaches

Table-1 (LHB Type EOG GS Antyodaya Coaches):-

S N	Description	Reference	Qty	Marking	Remarks
1.	Switch plate assembly complete with polycarbonate cover frame and polycarbonate base plate (with min. thickness 2.0mm and fire retardant UL-94-V0 grade) with 3 nos. ON-OFF switches and 1 no. 5-pin socket 6A, 250V AC with 2 no. 0.5 Amp. glass fuse of M/s Ferraz Shawmut/Cooper Bussmann/equivalent* (with fuse holders)	Drg. No. CC74256 alt 'Nil' (Only for reference-material to be supplied with polycarbonate base plate)	1 Set.	F,F CS110V AC/DC	Drg. No. CC74256 alt 'Nil' ITEM-1. (1 set comprising 10 switch plates)
2.	Switch plate assembly complete with polycarbonate cover frame and polycarbonate base plate (with min. thickness 2.0mm and fire retardant UL-94-V0 grade) with 2 nos. ON-OFF switches and 1 no. 5-pin socket 6A, 250V AC with 2 no. 0.5 Amp. glass fuse of M/s Ferraz Shawmut/Cooper Bussmann/equivalent* (with fuse holders)		1 Set.	F CS110V AC/DC	Drg. No. CC74256 alt 'Nil' ITEM-2. (1 set comprising 10 switch plates)
3.	Switch plate assembly complete with polycarbonate cover frame and polycarbonate base plate (with min. thickness 2.0mm and fire retardant UL-94-V0 grade) with 1 no. ON-OFF switch and 1 no. 5-pin socket 6A, 250V AC with 2 no. 0.5 Amp. glass fuse of M/s Ferraz Shawmut/Cooper Bussmann/equivalent* (with fuse holders)		1 Set.	CS110V AC/DC	Drg. No. CC74256 alt 'Nil' ITEM-5. (1 set comprising 20 switch plates)

* Equivalent with the approval from the office of PCEE/RCF.

Table-2 (LHB Type EOG SCN NON-AC Coaches):-

S N	Description	Reference	QPC	Marking	Remarks
1.	Switch plate assembly complete with polycarbonate cover frame and polycarbonate base plate (with min. thickness 2.0mm and fire retardant UL-94-V0 grade) with 4 nos. ON-OFF switches and 1 no. 5-pin socket 6A, 250V AC with 2 no. 0.5 Amp. glass fuse of M/s Ferraz Shawmut/Cooper Bussmann/equivalent* (with fuse holders)	Drg. No. CC74256 alt 'Nil' (Only for reference-material to be supplied with polycarbonate base plate)	1 Set.	L,F,F CS110V AC/DC	Drg. No. CC74256 alt 'Nil' ITEM-3. (1 set comprising 10 switch plates)
2.	Switch plate assembly complete with polycarbonate cover frame and polycarbonate base plate (with min. thickness 2.0mm and fire retardant UL-94-V0 grade) with 4 nos. ON-OFF switches and 1 no. 5-pin socket 6A, 250V AC with 2 no. 0.5 Amp. glass fuse of M/s Ferraz Shawmut/Cooper Bussmann/equivalent* (with fuse holders)		1 Set.	L,F,NL CS110V AC/DC	Drg. No. CC74256 alt 'Nil' ITEM-4. (1 set comprising 10 switch plates)
3.	Switch plate assembly complete with polycarbonate cover frame and polycarbonate base plate with min. thickness 2.0mm and fire retardant UL-94-V0 grade) with 1 no. ON-OFF switch and 1 no. 5-pin socket 6A, 250V AC with 2 no. 0.5 Amp. glass fuse of M/s Ferraz Shawmut/Cooper Bussmann/equivalent* (with fuse holders)		1 Set.	CS110V AC/DC	Drg. No. CC74256 alt 'Nil' ITEM-5. (1 set comprising 20 switch plates)

* Equivalent with the approval from the office of PCEE/RCF.




EDML-160	Nil	15.03.19				1 of 3
Document no.	Rev.	Date	SSE/CAD	SEE/D	DY.CEE/D&D	Page no.

Table-3, (LHB Type EOG SCN NON-AC (with wider windows) Coaches) :-



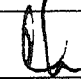
S N	Description	Reference	Qty	Marking	Remarks
1.	Switch plate assembly complete with polycarbonate cover frame and polycarbonate base plate (with min. thickness 2.0mm and fire retardant UL-94-V0 grade) with 4 nos. ON-OFF switches and 1 no. 5-pin socket 6A, 250V AC with 2 no. 0.5 Amp. glass fuse of M/s Ferraz Shawmut/Cooper Bussmann /equivalent* (with fuse holders)	Drg. No. CC74256 alt 'Nil' (Only for reference-material to be supplied with polycarbonate base plate)	1 Set.	L,F,F CS110V AC/DC	Drg. No. CC74256 alt 'Nil' ITEM-6. (1 set comprising 10 switch plates)
2.	Switch plate assembly complete with polycarbonate cover frame and polycarbonate base plate with min. thickness 2.0mm and fire retardant UL-94-V0 grade) with 4 nos. ON-OFF switches and 1 no. 5-pin socket 6A, 250V AC with 2 no. 0.5 Amp. glass fuse of M/s Ferraz Shawmut/Cooper Bussmann /equivalent* (with fuse holders)		1 Set.	L,F,NL CS110V AC/DC	Drg. No. CC74256 alt 'Nil' ITEM-7. (1 set comprising 10 switch plates)
3.	Switch plate assembly complete with polycarbonate cover frame and polycarbonate base plate (with min. thickness 2.0mm and fire retardant UL-94-V0 grade) with 1 nos. ON-OFF switches and 1 no. 5-pin socket 6A, 250V AC with 2 no. 0.5 Amp. glass fuse of M/s Ferraz Shawmut/Cooper Bussmann/equivalent* (with fuse holders)		1 Set.	CS110V AC/DC	Drg. No. CC74256 alt 'Nil' ITEM-5. (1 set comprising 20 switch plates)

* Equivalent with the approval from the office of PCEE/RCF.

Table-4, (LHB Type EOG NON-AC Chair Coaches) :-

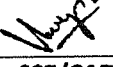


S N	Description	Reference	Qty	Marking	Remarks
1.	Switch plate assembly complete with polycarbonate cover frame and polycarbonate base plate (with min. thickness 2.0mm and fire retardant UL-94-V0 grade) with 3 nos. ON-OFF switches and 1 no. 5-pin socket 6A, 250V AC with 01 no. 1.0 Amp. glass fuse of M/s Ferraz Shawmut/Cooper Bussmann/equivalent* (with fuse holders)	Drg. No. CC74256 alt 'Nil' (Only for reference-material to be supplied with polycarbonate base plate)	1 Set.	F,F CS110V AC/DC	Drg. No. CC74256 alt 'Nil' ITEM-8. (1 set comprising 18 switch plates)
2.	Switch plate assembly complete with polycarbonate cover frame and polycarbonate base plate (with min. thickness 2.0mm and fire retardant UL-94-V0 grade) with 1 nos. ON-OFF switches and 1 no. 5-pin socket 6A, 250V AC with 01 no. 1.0 Amp. glass fuse of M/s Ferraz Shawmut/Cooper Bussmann/equivalent* (with fuse holders)		1 Set.	CS110V AC/DC	Drg. No. CC74256 alt 'Nil' ITEM-5. (1 set comprising 18 switch plates)

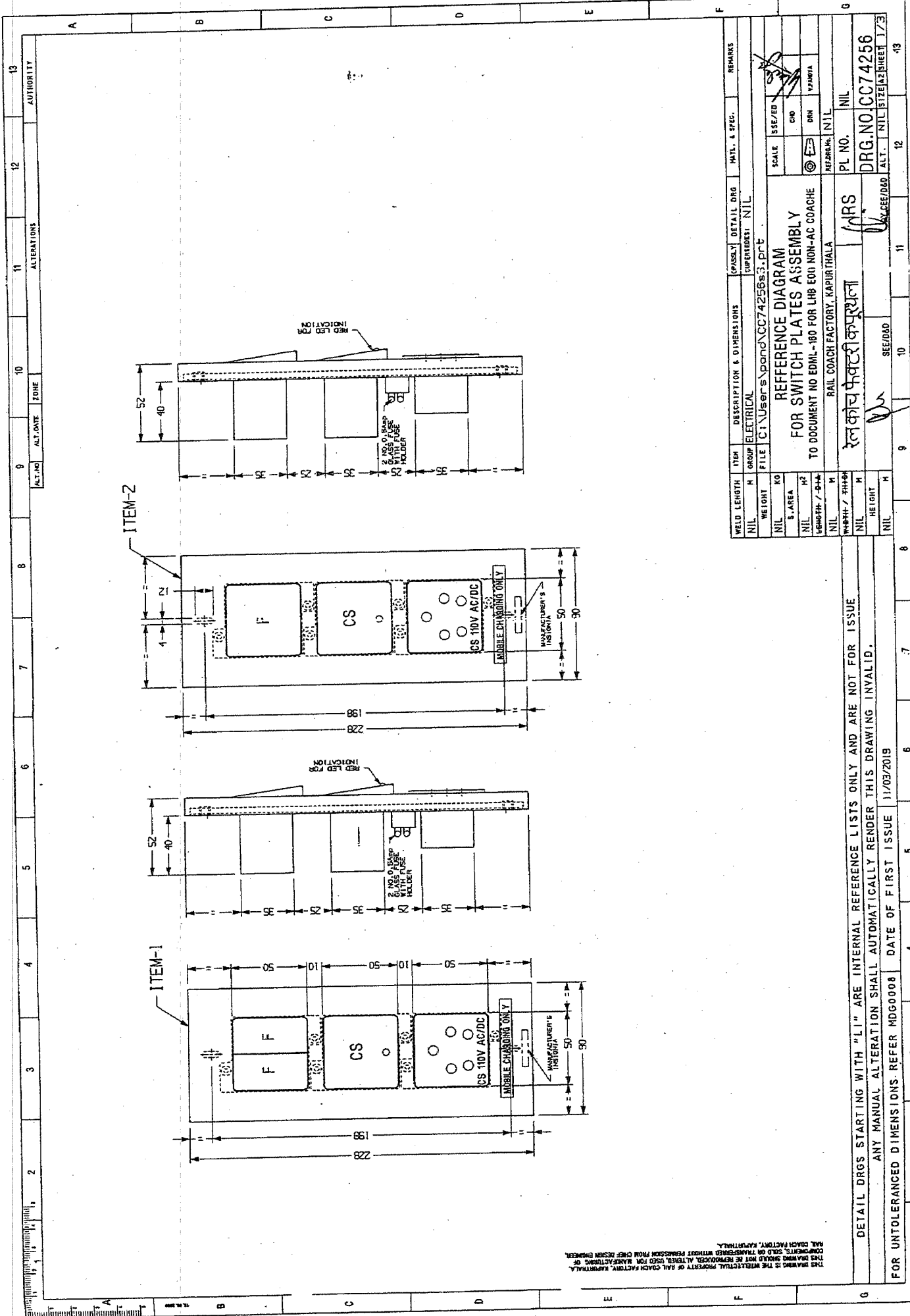
* Equivalent with the approval from the office of PCEE/RCF.

EDML-160	Nil	15.03.19				2 of 3
Document no.	Rev.	Date	SSE/CAD	SEE/D	DY.CEE/D&D	Page no.

Packing conditions of switch plates shall be as follows:-

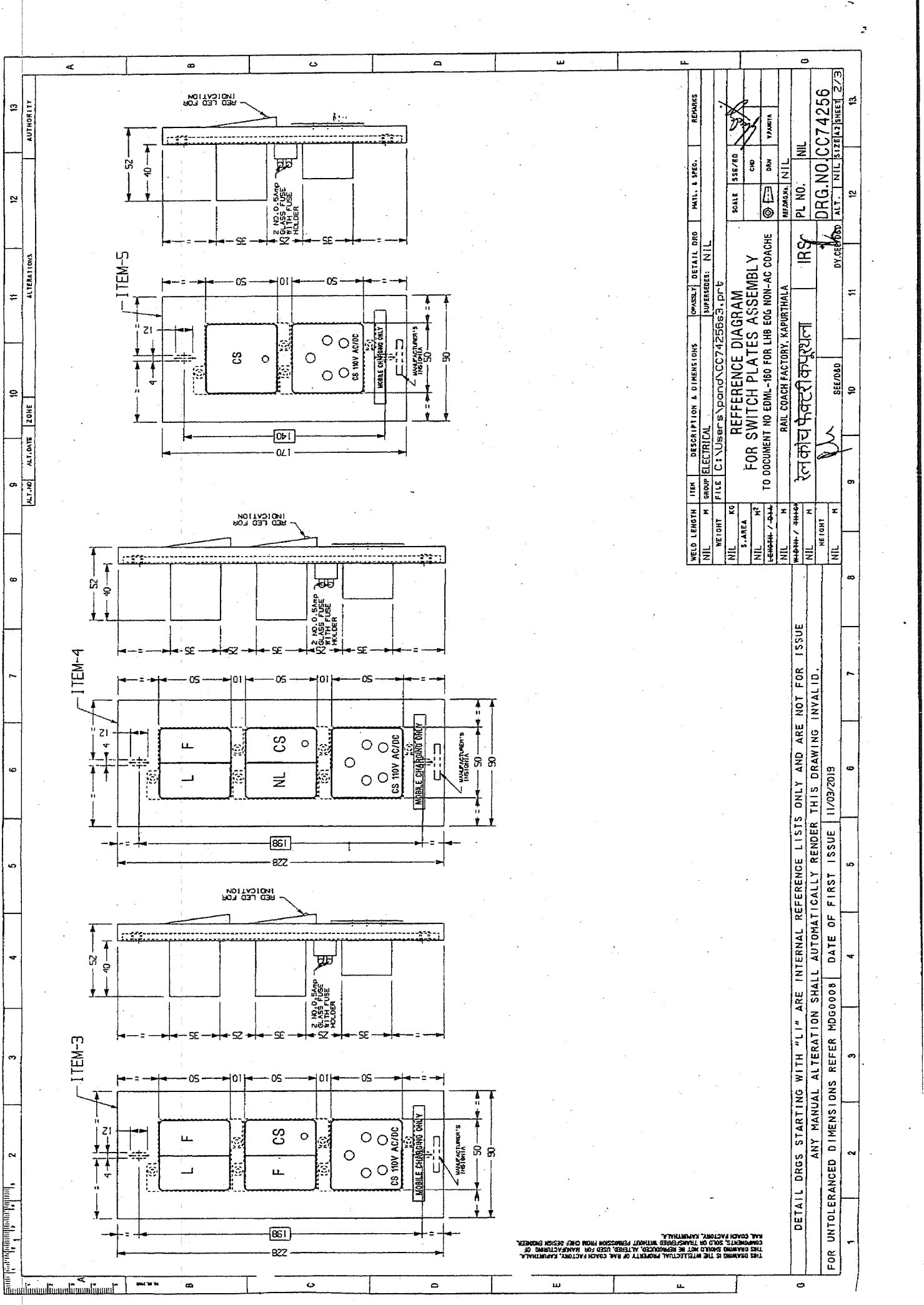
- Stage 1: Standard packing of switch plates mentioned above as per packing conditions document no. PI042.
- Stage 2: Packing per coach set as per packing conditions document no. PI021. Each packing shall be legibly marked for the type of coach applicable for.
- Stage 3: Bulk packing coach wise as per packing conditions document no. PI032. Each packing shall be legibly marked for the type of coach/coaches applicable for.
- N.B : i) Firm shall get approved prototype sample from CEE/RCF before commencing Bulk supply.
ii) Switches shall be conforming to IS: 3854-1997 and sockets shall be conforming to IS: 1293-2005 and both shall be 'ISI' marked.
iii) Red colour LED indication shall be provided in charging socket switch.
iv) 5-pin mobile charging socket without locking arrangement shall be provided.
v) Wire terminal details:-Terminals for connection of wires shall be provided as per the following details.
a) For LHB SG Type coaches:- 0.5A fuse in +ve wire & 0.5A fuse in -ve wire.
b) For LHB EOG Type coaches One No. 0.5A glass fuse in phase wire only and One No. 0.5 A glass fuse spare. Glass fuses provided shall be of M/s Ferraz Shawmut or M/s Cooper Bussmann make.

EDML-160	Nil	15.03.19				3 of 3
Document no.	Rev.	Date	SSE/CAD	SEE/D	DY.CEE/D&D	Page no.



WELD LENGTH	ITEM	DESCRIPTION & DIMENSIONS	(PASS) DETAIL DRG	MATL. & SPEC.	REMARKS
NIL	H	ELECTRICAL	SUPERSEDES: NIL		
NIL	KO	FILE: C:\Users\spano\CC74256s3.prt			
NIL	S-AREA	REFERENCE DIAGRAM			
NIL	H2	FOR SWITCH PLATES ASSEMBLY			
NIL	H2	TO DOCUMENT NO EDML-160 FOR LRB ECU NON-AC COACHE			
NIL	H	RAIL COACH FACTORY, KAPURTHALA			
NIL	H	PL NO.			
NIL	H	DRG.NO:CC74256			
NIL	H	DATE OF FIRST ISSUE 11/03/2019			
NIL	H	FOR UNTOLERANCED DIMENSIONS- REFER MDG0008			

WELD LENGTH	ITEM	DESCRIPTION & DIMENSIONS	(PASS) DETAIL DRG	MATL. & SPEC.	REMARKS
NIL	H	ELECTRICAL	SUPERSEDES: NIL		
NIL	KO	FILE: C:\Users\spano\CC74256s3.prt			
NIL	S-AREA	REFERENCE DIAGRAM			
NIL	H2	FOR SWITCH PLATES ASSEMBLY			
NIL	H2	TO DOCUMENT NO EDML-160 FOR LRB ECU NON-AC COACHE			
NIL	H	RAIL COACH FACTORY, KAPURTHALA			
NIL	H	PL NO.			
NIL	H	DRG.NO:CC74256			
NIL	H	DATE OF FIRST ISSUE 11/03/2019			
NIL	H	FOR UNTOLERANCED DIMENSIONS- REFER MDG0008			



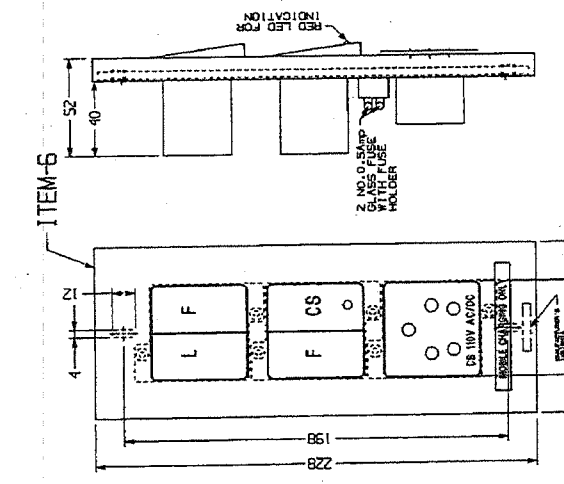
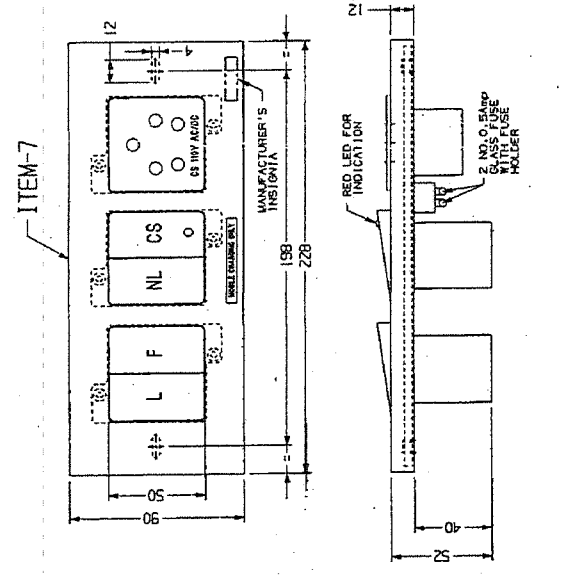
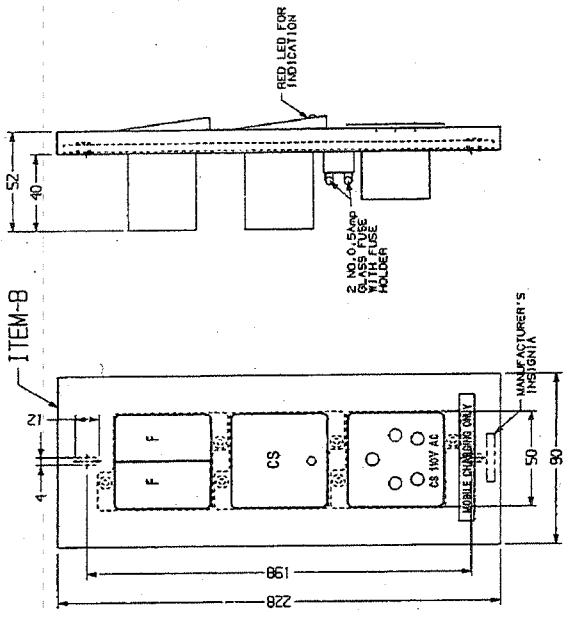
13 AUTHORITY
 12 ALTERATIONS
 11
 10
 9 ALT. DATE ZONE
 8
 7
 6
 5
 4
 3
 2
 1

WELD LENGTH	ITEM	DESCRIPTION & DIMENSIONS	DETAIL DRG	MATL. & SPEC.	REMARKS
NIL	M	GROUP ELECTRICAL	SUPERSEDES: NIL		
NIL	KG	FILE C:\Users\pandoc\CC742563.D\F			
NIL	M ²	REFERENCE DIAGRAM FOR SWITCH PLATES ASSEMBLY			
LENGTH / DIA		TO DOCUMENT NO EDML-160 FOR LHB ECG NON-AC COACH			
NIL	M	RAIL COACH FACTORY, KAPURTHALA			
WIDTH / HEIGHT		REMARKS: NIL			
NIL	M	PL NO.	NIL		
HEIGHT	M	DRG. NO.	CC74256		
NIL	M	DATE OF FIRST ISSUE	11/03/2019		
		SEE/DSD	10		
		DI. CE/DSD	12		
		ALT.	13		

DETAIL DRGS STARTING WITH "L1" ARE INTERNAL REFERENCE LISTS ONLY AND ARE NOT FOR ISSUE
 ANY MANUAL ALTERATION SHALL AUTOMATICALLY RENDER THIS DRAWING INVALID.
 FOR UNTOLERANCED DIMENSIONS REFER MDG0008 DATE OF FIRST ISSUE 11/03/2019

THIS DRAWING IS THE INTELLECTUAL PROPERTY OF RAIL COACH FACTORY, KAPURTHALA. (EMPLOYEES ONLY) NO PART OF THIS DRAWING IS TO BE REPRODUCED, ALTERED, USED FOR MANUFACTURING OR COMMERCIAL PURPOSES WITHOUT PERMISSION FROM CHIEF DESIGN ENGINEER, RAIL COACH FACTORY, KAPURTHALA.

1	2	3	4	5	6	7	8	9	10	11	12	13	
ALTERNATIONS										AUTHORITY			
ALT. NO.										ALT. DATE		ZONE	
NIL										NIL		NIL	
ALT. NO.										ALT. DATE		ZONE	
NIL										NIL		NIL	



11. 5-PIN MOBILE CHARGING SOCKET WITHOUT LOCKING ARRANGEMENT SHALL BE PROVIDED.
 10. WIRING FOR SWITCH & SOCKET CONNECTIVITY TO BE PROVIDED.
 9. SWITCH & SOCKET SHALL BE SCREWED ON BASE PLATE WITH MINIMUM M3 SCREWS COMPLETE WITH HEX. NUT & SPRING WASHER.
 8. SWITCH & SOCKET SHALL CONFORM TO IS:3854-1987 & SOCKET SHALL CONFORM TO IS:1293-2005 AND BOTH SHALL BE 1ST MARKED.
 7. RED LED INDICATION TO BE PROVIDED IN CHARGING SOCKET SWITCH.
 6. SHROUD TO BE PROVIDED ON THE REAR OF THE LIVE TERMINALS OF CHARGING SOCKET.
 5. FUSE HOLDER WITH GLASS FUSE OF REPUTED MAKE (10.5 AMP) TO BE PROVIDED FOR (+VE) AND (-VE) SIDE TERMINAL IN CHARGING SOCKET.
 4. PROTOTYPE SAMPLE SHALL BE GOT VALIDATED BEFORE COMMENCING BULK SUPPLY.
 3. SWITCH PLATE ARE TO BE MOUNTED IN COACH IN VERTICAL POSITION, ACCORDINGLY MANUFACTURER'S INSIGNIA SHALL BE EMBOSSED.
 2. MARKING ON SWITCHES SHALL BE AS INDICATED IN DRAWING.
 1. ALL DIMENSIONS IN MM.

NOTE: 1.

DETAIL DRGS STARTING WITH "LI" ARE INTERNAL REFERENCE LISTS ONLY AND ARE NOT FOR ISSUE
 ANY MANUAL ALTERATION SHALL AUTOMATICALLY RENDER THIS DRAWING INVALID.

FOR UNTOLERANCED DIMENSIONS REFER MDG0008 DATE OF FIRST ISSUE 11/03/2019

WELD LENGTH	ITEM	DESCRIPTION & DIMENSIONS	DETAIL DRG	MATL. & PFG.	REMARKS
NIL	H	ELECTRICAL	ASSEMBLY SUPERSEDES: NIL		
WEIGHT	FILE	C:\Users\spanand\CC74256\31.DWG			
NIL	GROUP				
S. AREA					
NIL					
LENGTH / DIA					
NIL					
WIDTH / THICK					
NIL					
HEIGHT					
NIL					
SCALE					
PL NO.					
DRG. NO.					
BY					
DATE					
11/03/2019					

PL NO. NIL
 DRG. NO. CC74256
 BY: [Signature]
 DATE: 11/03/2019