

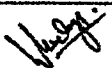
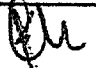

**Switch plate assembly along with mobile charging sockets for  
LHB EOG Type SCN coaches (with wider windows)**

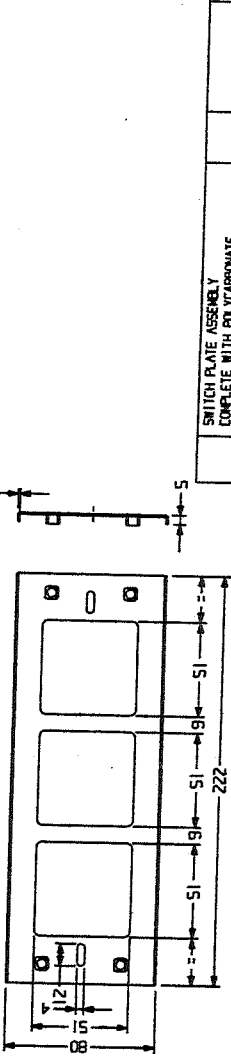
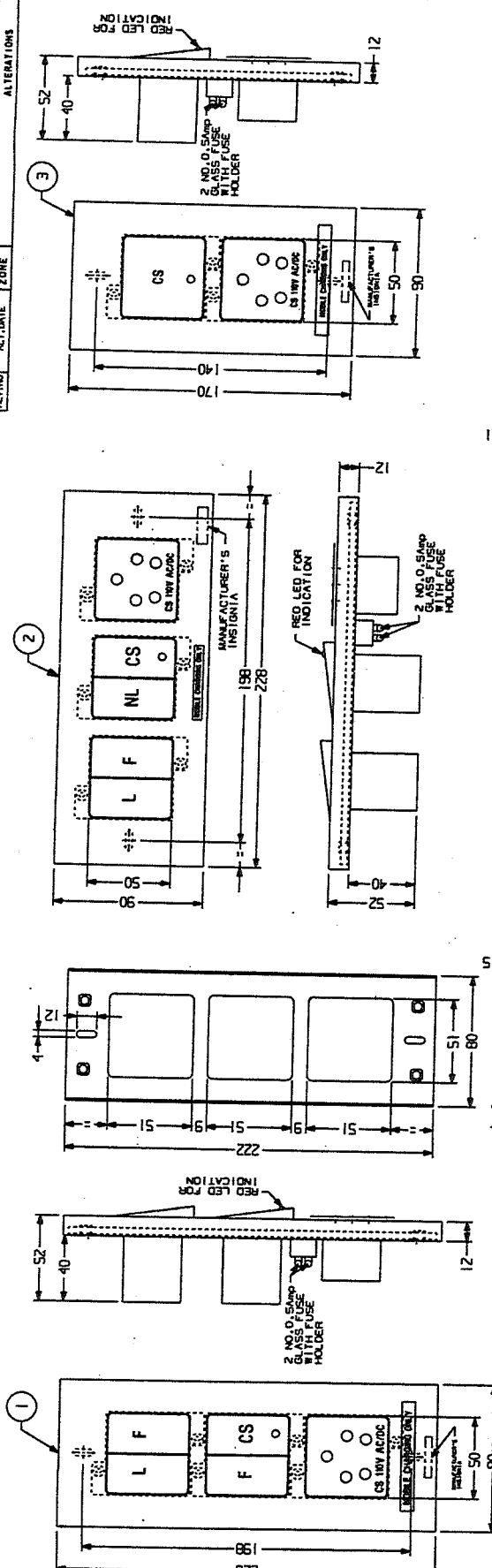
Switch plate assembly with mobile charging socket for provision on either side of each cabin in SCN coaches (with wider windows).

Item no.	Description	Reference	Qty.	Drawing No.
1.	Switch plate assembly complete with polycarbonate cover frame and powder coated steel plate with 4 nos. ON-OFF switches and 1 no. 5-pin socket 6A,250V AC with 2 nos. 0.5 Amp Glass fuses of M/s Ferraz Shawmut/ Cooper Bussman/equivalent (with fuse holders)	M/s SSK or RCF approved make	1 No.	OGA, mounting dimensions, orientation and marking as per drawing no.CC74255, Alt-'Nil' ,Item-1
2.	Switch plate assembly complete with polycarbonate cover frame and powder coated steel plate with 4 nos. ON-OFF switches and 1 no. 5-pin socket 6A,250V AC with 2 nos. 0.5 Amp Glass fuses of M/s Ferraz Shawmut/ Cooper Bussman/equivalent (with fuse holders)	M/s SSK or RCF approved make	1 No.	OGA, mounting dimensions, orientation and marking as per drawing no.CC74255, Alt-'Nil' ,Item-2
3.	Switch plate assembly complete with polycarbonate cover frame and powder coated steel plate with 1 nos. ON-OFF switches and 1 no. 5-pin socket 6A,250V AC with 1 no. 0.5 Amp Glass fuses of M/s Ferraz Shawmut/ Cooper Bussman/equivalent (with fuse holders)	M/s SSK or RCF approved make	1 No.	OGA, mounting dimensions, orientation and marking as per drawing no.CC74255, Alt-'Nil' ,Item-3

Packing conditions of switch plates shall be as follows:

- Stage 1: Standard packing of switch plates mentioned above as per packing conditions document no. PI042.
- Stage 2: Packing per coach set as per packing conditions document no. PI021. Each packing shall be legibly marked for the type of coach applicable for.
- Stage 3: Bulk packing coach wise as per packing conditions document no. PI032. Each packing shall be legibly marked for the type of coach/coaches applicable for.
- N.B : i) Firm shall get approved prototype sample from CEE/RCF before commencing Bulk supply.  
ii) All switches and socket shall be 'ISI' marked.  
iii) Red colour LED indication shall be provided in charging socket switch.  
iv) 5-pin mobile charging socket without locking arrangement shall be provided.  
v) Wire terminal details:-Terminals for connection of wires shall be provided as per the following details.  
vi) For LHB EOG type SCN coaches:- 0.5A fuse in Phase only & 0.5A fuse spare.

EDML-156	Nil	24.06.2018				1 of 1
Document no.	Rev.	Date	SSE/CAD	SEE/D	DY.CEE/D&D	Page no.



MOUNTING PLATE

ITEM NO.	DESCRIPTION	QTY	REMARKS
1	SWITCH PLATE ASSEMBLY COMPLETE WITH POLYCARBONATE COVER FRAME AND POWDER COATED STEEL PLATE WITH 4 NOS. ON-OFF SWITCH & 1 NOS. 5-PIN SOCKET BA, 250V AC WITH 2 NOS. 0.5AMP GLASS FUSES WITH FUSE HOLDERS.	1	NIL
2	SWITCH PLATE ASSEMBLY COMPLETE WITH POLYCARBONATE COVER FRAME AND POWDER COATED STEEL PLATE WITH 1 NOS. ON-OFF SWITCH & 1 NOS. 5-PIN SOCKET BA, 250V AC WITH 2 NOS. 0.5AMP GLASS FUSES WITH FUSE HOLDERS.	1	NIL
3	SWITCH PLATE ASSEMBLY COMPLETE WITH POLYCARBONATE COVER FRAME AND POWDER COATED STEEL PLATE WITH 1 NOS. ON-OFF SWITCH & 1 NOS. 5-PIN SOCKET BA, 250V AC WITH 2 NOS. 0.5AMP GLASS FUSES WITH FUSE HOLDERS.	1	NIL

- 12.5-PIN MOBILE CHARGING SOCKET WITHOUT LOCKING ARRANGEMENT SHALL BE PROVIDED.  
 11. THE TERMINAL OF SWITCH MARKED AS CS ITEM-3 SHALL BE PROVIDED WITH E-BEAM CABLE OF 300MM. ON EACH TERMINALS.  
 10. WIRING FOR SWITCH & SOCKET CONNECTIVITY TO BE PROVIDED  
 9. SWITCH & SOCKET SHALL BE SCREWED ON BASE PLATE WITH MINIMUM M3 SCREWS COMPLETE WITH HEX-NUT & SPRING WASHER.  
 8. SWITCH SHALL CONFORM TO IS13854-1997 & SOCKET SHALL CONFORM TO IS1293-2005 AND BOTH SHALL BE ISI MARKED.  
 7. RED LED INDICATION TO BE PROVIDED IN CHARGING SOCKET SWITCH.  
 6. SHROUD TO BE PROVIDED ON THE REAR OF THE LIVE TERMINALS OF CHARGING SOCKET.  
 5. FUSE HOLDER WITH GLASS FUSE OF REPUTED MAKE 10.5AMP TO BE PROVIDED FOR (+VE) AND (-VE) SIDE TERMINAL IN CHARGING SOCKET.  
 4. PROTOTYPE SAMPLE SHALL BE GOT VALIDATED BEFORE COMMENCING BULK SUPPLY.  
 3. SWITCH PLATE ARE TO BE MOUNTED IN COACH IN VERTICAL POSITION ACCORDINGLY MANUFACTURER'S INSIGNIA SHALL BE EMBOSSED.  
 2. MARKING ON SWITCHES SHALL BE AS INDICATED IN DRAWING.  
 NOTE:-  
 1. ALL DIMENSIONS IN MM.

DETAIL DRGS STARTING WITH "L1" ARE INTERNAL REFERENCE LISTS ONLY AND ARE NOT FOR ISSUE  
 ANY MANUAL ALTERATION SHALL AUTOMATICALLY RENDER THIS DRAWING INVALID.

FOR UNTOLERANCED DIMENSIONS REFER MDG0008 DATE OF FIRST ISSUE 24/06/2018

WELD LENGTH	M	RO	REMARKS
NIL			
WEIGHT	M	RO	REMARKS
NIL			
S. AREA	M <sup>2</sup>	RO	REMARKS
NIL			
LENGTH / DIA	M	RO	REMARKS
NIL			
HEIGHT / THICK	M	RO	REMARKS
NIL			
SCALE	AS SHOWN	AS SHOWN	REMARKS
SCALE	AS SHOWN	AS SHOWN	REMARKS
PL NO.	NIL		REMARKS
DRG. NO.	CC74255		REMARKS
DATE	24/06/2018		REMARKS
DESIGNED BY	IR S		REMARKS
CHECKED BY			REMARKS
APPROVED BY			REMARKS
DATE	24/06/2018		REMARKS
PROJECT NO.	NIL		REMARKS
PLANT / SHEET	NIL / 13		REMARKS

RAIL COACH FACTORY, KAPURTHALA

स्लैक फ़ैक्टरी कपूरथला



### Amendment No.- 1

#### Amendment No-1 to EDML No.-156, Rev-Nil for Switch Plate assembly along with Mobile charging sockets for LHB EOG Type SCN Coaches (with wider windows).

This Amendment is issued to EDML No.-156, Rev-Nil for Switch Plate assembly along with Mobile charging sockets for LHB EOG Type SCN Coaches (with wider windows) to incorporate the following modifications:-

1. Following drawings amended as follows :-
  - i) Drg no. CC74255, Alt-'Nil' may be read as Drg no. CC74255, Alt-'a'.

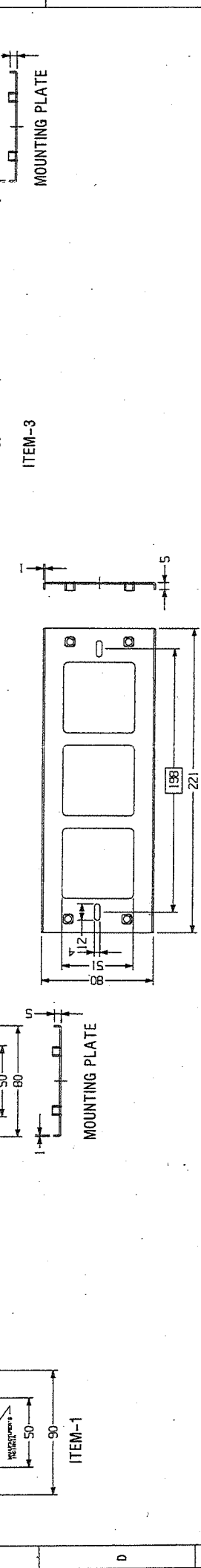
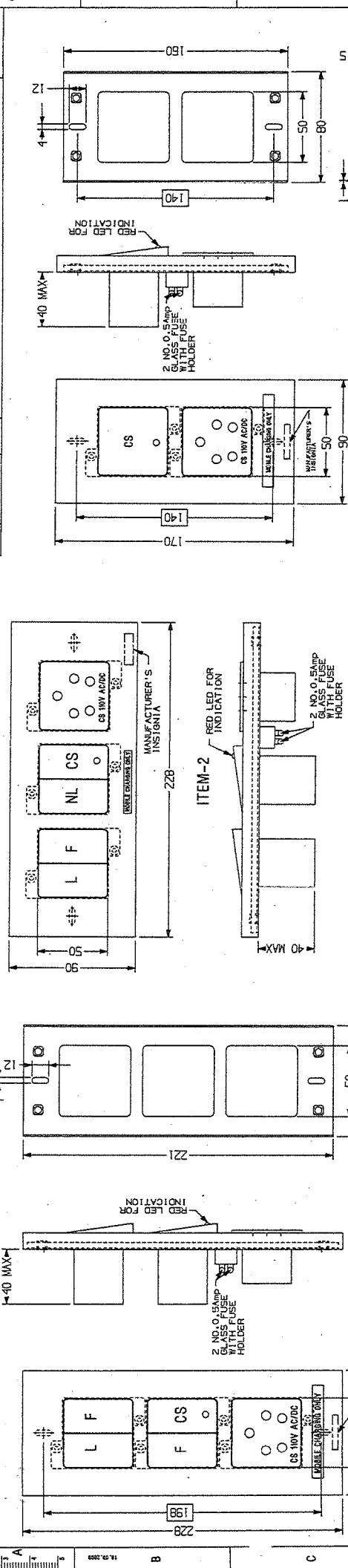
#### Test:-

2. Following test shall be conducted from Govt./NABL accredited lab:-
  - i) Test for Polymer identification of FR Polycarbonate material.
  - ii) Fire retardant test to grade UL-94 V0 from the OEM of the raw material.
  - iii) Test for composition of contact Material (fixed and moving).

EDML-156, Rev-Nil	1	24-07-2019				1 of 1
Doc. No.	Am.	Date	SSE/NAC	SEE/D	DY.CEE/D&D	Page



1	2	3	4	5	6	7	8	9	10	11	12
ALT. NO.		ALT. DATE		ZONE		ALTERATIONS		1. NOTE-5 & 9 UPDATED. 2. NOTE-6 DELETED. 3. NOTE-13A14 ADDED & DRAWING MODIFIED ACCORDINGLY.		AUTHORITY D/ENGINEERING ED190008	
a		25/07/2019		F-1							



14. FRAMED DIMENSIONS SHALL BE STRICTLY ADHERED TO BY JIG PUNCHING.  
 13. COVER FRAME OF THE SWITCH PLATE ASSEMBLY SHALL BE OF WHITE COLOR ONLY.  
 12. 5-PIN MOBILE CHARGING SOCKET WITHOUT LOCKING ARRANGEMENT/SHUTTER SHALL BE PROVIDED.  
 10. WIRING FOR SWITCH, SOCKET AND FUSE CONNECTIVITY TO BE PROVIDED WITH 1.5 SQ.MM, E-BEAM CABLE TO SPECIFICATION NO.ELRS/SPEC/ELC/0019, LATEST APPLICABLE & PROCURED FROM RDSO APPROVED SOURCES.  
 9. SWITCH & SOCKET SHALL BE SCREWED ON POWDER COATED STEEL/GI WITHOUT POWDER COATED BASE PLATE OF MINIMUM THICKNESS 1.0 MM WITH MINIMUM M3 SCREWS COMPLETE WITH HEX-NUT & SPRING WASHER.  
 7. RED LED INDICATION TO BE PROVIDED IN CHARGING SOCKET SWITCH.  
 6. SHROUD TO BE PROVIDED ON THE REAR OF THE LIVE TERMINALS OF CHARGING SOCKET.  
 5. FUSE HOLDER WITH GLASS FUSE OF REPUTED MAKE (0.5 AMP) TO BE PROVIDED FOR PHASE SIDE TERMINAL IN CHARGING SOCKET.  
 4. PROTOTYPE SAMPLE SHALL BE GOT VALIDATED BEFORE COMMENCING BULK SUPPLY.  
 3. SWITCH PLATE ARE TO BE MOUNTED IN COACH IN VERTICAL POSITION ACCORDINGLY MANUFACTURER'S INSTANTIA SHALL BE EMBOSSED.  
 2. MARKING ON SWITCHES SHALL BE AS INDICATED IN DRAWING.  
 1. ALL DIMENSIONS IN MM.

WELD LENGTH		ITEM		DESCRIPTION & DIMENSIONS		OPASSY DETAIL DRG		MNL. & SPEC.		REMARKS	
NIL		GROUP ELECTRICAL		FILE D:\CC74255a.prt		SUPERSEDES: CC74255					
NIL		KG		SCALE		SSE/ED		CHD		Y. PANDA	
NIL		RF		LENGTH / DIA		DRN		REF. DRG.:		NIL	
NIL		H		WHFTH / THICK		PL NO.		NIL		NIL	
NIL		H		HEIGHT		DRG. NO.		CC74255		ALT. 10	
NIL		H		HEIGHT		DATE OF FIRST ISSUE		24/08/2018		DATE OF FIRST ISSUE	
NIL		H		HEIGHT		DATE OF FIRST ISSUE		24/08/2018		DATE OF FIRST ISSUE	
NIL		H		HEIGHT		DATE OF FIRST ISSUE		24/08/2018		DATE OF FIRST ISSUE	

DETAIL DRGS STARTING WITH "LI" ARE INTERNAL REFERENCE LISTS ONLY AND ARE NOT FOR ISSUE  
 ANY MANUAL ALTERATION SHALL AUTOMATICALLY RENDER THIS DRAWING INVALID.  
 FOR UNPOLARANCED DIMENSIONS REFER MDO0008