

Set of switch plate assembly for LHB Non-AC chair car coachesTable-1

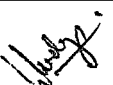
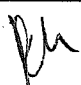
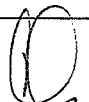
Switch plate assembly for control of fans and mobile charging socket only from alternate bay of LHB-EOG chair car coaches.

Item No.	Description	Reference	Qty.	Marking	Remarks
1.	Switch Plate Assembly complete with polycarbonate cover frame and powder coated steel plate/GI plate without powder coated of minimum thickness 1.0 mm. with 3 nos. ON-OFF switches and 1 No. 5-Pin socket 6A, 250V with 01 no. 0.5 Amp glass fuses with holder.	CC74252, Alt.'a'	1 set (Comprising 18 switch plates)	F,F CS CS 110V AC	Drg.no.CC74252, Alt-'a',
3.	Switch plate assembly complete with polycarbonate cover frame and powder coated steel plate/GI plate without powder coated of minimum thickness 1.0 mm. with 1 nos. ON-OFF switches and 1 no. 5-pin socket 6A,250V AC with 2 nos. 0.5 Amp Glass fuses with holder.	CC74247 ,Alt-'d'	1 set (Comprising 18 switch plates)	CS CS 110V AC/DC	Drg.no.CC74247, Alt-'d', Item-3

Table-2

Switch plate assembly for control of fans and mobile charging socket only from alternate bay of LHB-SG chair car coaches.

Item No.	Description	Reference	Qty.	Marking	Remarks
1.	Switch Plate Assembly complete with polycarbonate cover frame and powder coated steel plate/GI plate without powder coated of minimum thickness 1.0 mm. with 3 nos. ON-OFF switches and 1 No. 5-Pin socket 6A, 250V with 02 nos. 0.5 Amp glass fuses with holder.	CC74254, Alt. 'a'	1 set (Comprising 18 switch plates)	F,F CS CS 110V DC	Drg.no.CC74254 Alt-'a', Item-1
2.	Switch Plate Assembly complete with polycarbonate cover frame and powder coated steel plate/GI plate without powder coated of minimum thickness 1.0 mm. with 2 nos. ON-OFF switches and 2 Nos. 5-Pin sockets 6A, 250V with 04 nos. 0.5 Amp glass fuses with holder.	CC74254, Alt. 'a',	1 set (Comprising 02 switch plates)	CS,CS CS 110V DC	Drg.no.CC74254 Alt-'a', Item-2

EDML-125	5	24.07.2019				1 of 2
Document No.	Rev.	Date	SSE/CAD	SEE/D	Dy.CEE/D&D	Page No.

Set of switch plate assembly for LHB Non-AC chair car coaches

Packing conditions of switch plates shall be as follows:

Stage 1: Standard packing of switch plates mentioned above shall be as per packing conditions document no. PI042.

Stage 2: Packing per coach set shall be as per packing conditions to document no. PI021. Each packing shall be legibly marked for the type of coach applicable for.

Stage 3: Bulk packing coach wise shall be as per packing conditions to document no. PI032. Each packing shall be legibly marked for the type of coach /coaches applicable for.




- N.B. :
- i) Firm shall get approved prototype sample from CEDE/RCF before commencing Bulk supply.
 - ii) Switches shall be conforming to IS: 3854-1997 and sockets shall be conforming to IS: 1293-2005 and both shall be 'ISI' marked.
 - iii) Red colour LED indication shall be provided in charging socket switch.
 - iv) 5-pin mobile charging socket without locking arrangement/shutter shall be provided.
 - v) Wiring for switch, socket & fuse connectivity to be provided with 1.5 sq.mm.E-Beam cable to specification no.ELRS/SPEC/ELC/0019, latest applicable & procured from RDSO approved sources.
 - vi) Cover frame of the switch plate assembly shall be of white color only.
 - vii) Wiring terminal details: -Terminals for connection of wires shall be provided as per the following detail.

A) For LHB EOG Non-AC Chair Car Coaches: One No. 0.5A glass fuse in phase wire only. Glass fuse provided shall be of M/s Ferraz Shawmut or M/s Cooper Bussmann make with holder.

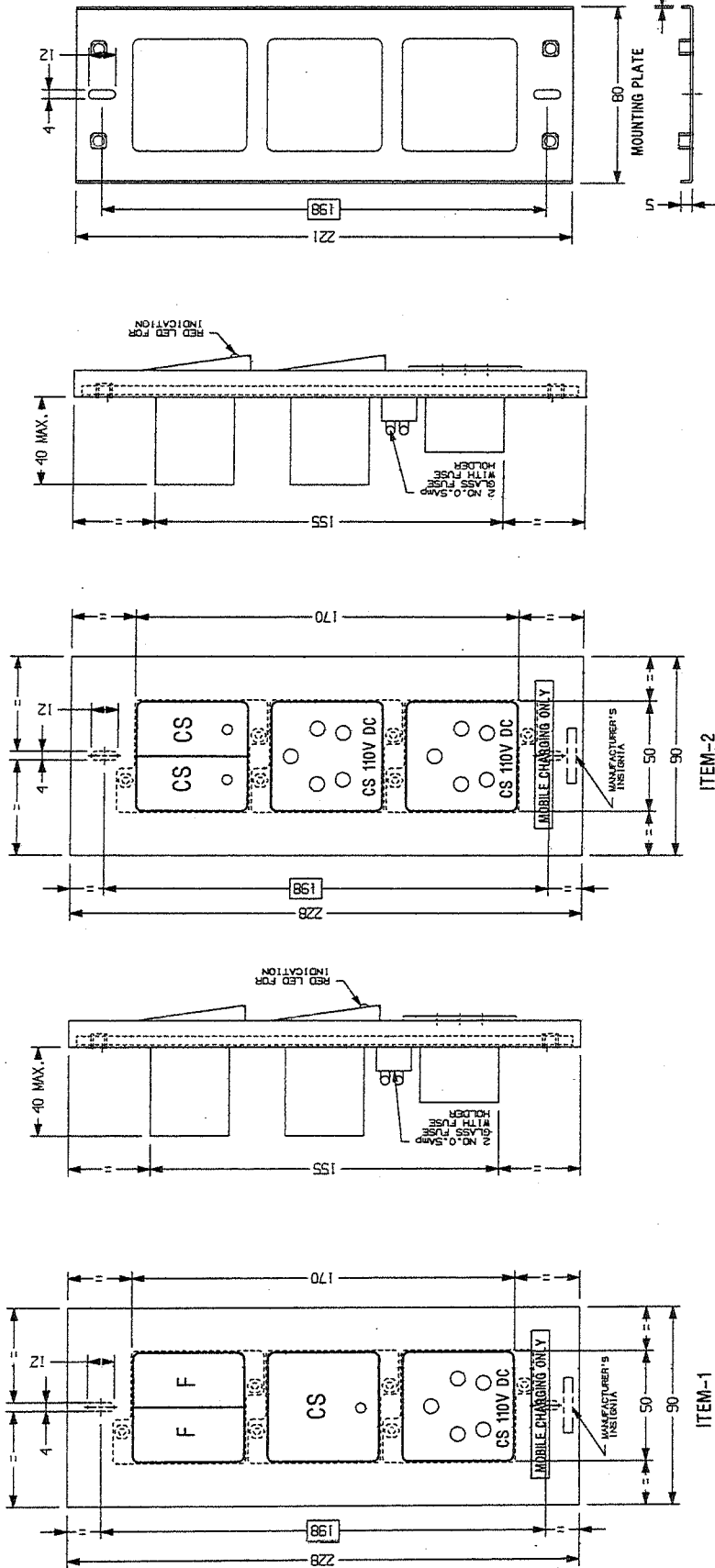
B) For LHB SG Non-AC Chair Car Coaches: One No. 0.5A glass fuse to be provided in +ve wire and One No. 0.5 A glass fuse to be provided in -ve wire. Glass fuses provided shall be of M/s Ferraz Shawmut or M/s Cooper Bussmann make with holder.

Test:-

- 1) Following test shall be conducted from Govt./NABL accredited lab :-
 - i. Test for Polymer identification of FR Polycarbonate material.
 - ii. Fire retardant test to grade UL-94 V0 from the OEM of the raw material.
 - iii. Test for composition of contact Material (fixed and moving).

EDML-125	5	24.07.2019				2 of 2
Document No.	Rev.	Date	SSE/CAD	SEE/D	Dy.CEE/D&D	Page No.

1	2	3	4	5	6	7	8	9	10	11	12	13
ALT. NO.		ALT. DATE		ZONE		ALTERATIONS		AUTHORITY				
C		24/07/2019		F-1		1. NOTE-5 & 9 MODIFIED. 2. NOTE-10, 11, 12 & 13 ADDED & DRAWING MODIFIED ACCORDINGLY.		D.C. NO. ED190009				



13. FRAMED DIMENSIONS SHALL BE STRICTLY ADHERED TO BY JIG PUNCHING.
12. COVER FRAME OF THE SWITCH PLATE ASSEMBLY SHALL BE OF WHITE COLOR ONLY.
11. WIRING FOR SWITCH, SOCKET AND FUSE CONNECTIVITY TO BE PROVIDED WITH 1.5 SQ.MM, E-BEAM CABLE TO SPECIFICATION NO. ELRS/SPEC/ELC/0019, LATEST APPLICABLE & PROCURED FROM RDSO APPROVED SOURCES.
10. 5-PIN MOBILE CHARGING SOCKET WITHOUT LOCKING ARRANGEMENT/SHUTTER SHALL BE PROVIDED.
9. SWITCH & SOCKET SHALL BE SCREWED ON POWDER COATED STEEL/BI WITHOUT POWDER COATED BASE PLATE OF MINIMUM THICKNESS 1.0 MM, WITH MINIMUM M3 SCREWS COMPLETE WITH HEX.NUT & SPRING WASHER.
8. SWITCH SHALL CONFORM TO IS13854-1997 & SOCKET SHALL CONFORM TO IS:1293-2005 AND BOTH SHALL BE ISI MARKED.
7. RED LED INDICATION TO BE PROVIDED IN CHARGING SOCKET SWITCH.
6. SHROUD TO BE PROVIDED ON THE REAR OF THE LIVE TERMINALS OF CHARGING SOCKET.
5. FUSE HOLDER WITH GLASS FUSE OF FERRAZ SHAWMUT/COOPER BUSSMANN MAKE (0.5Amp) TO BE PROVIDED FOR (+VE) SIDE & (-VE) SIDE TERMINAL IN CHARGING SOCKET.
4. PROTOTYPE SAMPLE SHALL BE GOT VALIDATED BEFORE COMMENCING BULK SUPPLY.
3. SWITCH PLATE ARE TO BE MOUNTED IN COACH IN VERTICAL POSITION, ACCORDINGLY MANUFACTURER'S INSIGNIA SHALL BE EMBOSSED.
2. MARKING ON SWITCHES SHALL BE AS INDICATED IN DRAWING.
- NOTE: 1. ALL DIMENSIONS IN MM.

WELD LENGTH		ITEM		DESCRIPTION & DIMENSIONS		ASSEMBLY		DETAIL DRG		MATERIAL & SPEC.		REMARKS	
NIL		M		ELECTRICAL		FILE ID: \\CC74254g.prt		SUPERSEDES: CC74254.prt					
NIL		KG		WEIGHT						SCALE		SSE/ED	
NIL		M ²		S. AREA						CHD		DRK	
NIL		H		LENGTH / DIA						REF. DRG.		NIL	
NIL		H		WIDTH / #HOLE						PL NO.		NIL	
NIL		H		HEIGHT						DRG. NO.		CC74254	
NIL		H		HEIGHT						ALT.		C	
NIL		H		HEIGHT						SIZE		A3 SHEET 1/1	

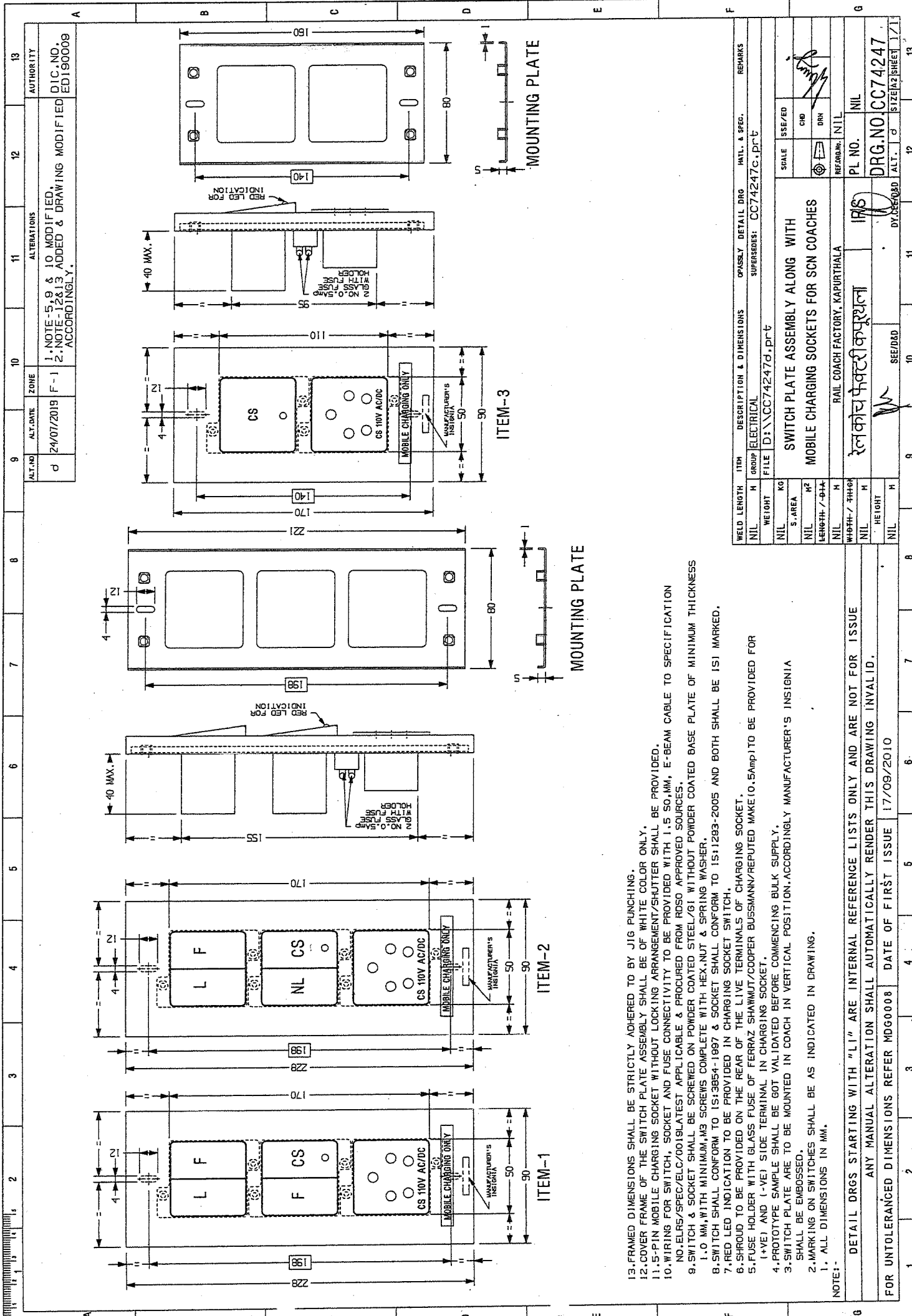
FOR UNTOLERANCED DIMENSIONS REFER MDG0008 DATE OF FIRST ISSUE 14/01/2017

ANY MANUAL ALTERATION SHALL AUTOMATICALLY RENDER THIS DRAWING INVALID.

DETAIL DRGS STARTING WITH "LI" ARE INTERNAL REFERENCE LISTS ONLY AND ARE NOT FOR ISSUE

RAIL COACH FACTORY, KAPURTHALA

SEE/DAD



13. FRAMED DIMENSIONS SHALL BE STRICTLY ADHERED TO BY JIG PUNCHING.
12. COVER FRAME OF THE SWITCH PLATE ASSEMBLY SHALL BE OF WHITE COLOR ONLY.
11. 5-PIN MOBILE CHARGING SOCKET WITHOUT LOCKING ARRANGEMENT/SHUTTER SHALL BE PROVIDED.
10. WIRING FOR SWITCH, SOCKET AND FUSE CONNECTIVITY TO BE PROVIDED WITH 1.5 SQ. MM, E-BEAM CABLE TO SPECIFICATION NO. ELRS/SPEC/JELC/0019LATEST APPLICABLE & PROCURED FROM RDSO APPROVED SOURCES.
9. SWITCH & SOCKET SHALL BE SCREWED ON POWDER COATED STEEL/GI WITHOUT POWDER COATED BASE PLATE OF MINIMUM THICKNESS 1.0 MM, WITH MINIMUM M3 SCREWS COMPLETE WITH HEX. NUT & SPRING WASHER.
8. SWITCH SHALL CONFORM TO IS:3854-1997 & SOCKET SHALL CONFORM TO IS:1293-2005 AND BOTH SHALL BE ISI MARKED.
7. RED LED INDICATION TO BE PROVIDED IN CHARGING SOCKET SWITCH.
6. SHROUD TO BE PROVIDED ON THE REAR OF THE LIVE TERMINALS OF CHARGING SOCKET.
5. FUSE HOLDER WITH GLASS FUSE OF FERRAZ SHAWMUT/COOPER BUSSMANN/REPUTED MAKE (0.5amp) TO BE PROVIDED FOR (1+VE) AND (-VE) SIDE TERMINAL IN CHARGING SOCKET.
4. PROTOTYPE SAMPLE SHALL BE GOT VALIDATED BEFORE COMMENCING BULK SUPPLY.
3. SWITCH PLATE ARE TO BE MOUNTED IN COACH IN VERTICAL POSITION, ACCORDINGLY MANUFACTURER'S INSIGNIA SHALL BE EMBOSSED.
2. MARKING ON SWITCHES SHALL BE AS INDICATED IN DRAWING.
1. ALL DIMENSIONS IN MM.

NOTE :-
 DETAIL DRGS STARTING WITH "LI" ARE INTERNAL REFERENCE LISTS ONLY AND ARE NOT FOR ISSUE
 ANY MANUAL ALTERATION SHALL AUTOMATICALLY RENDER THIS DRAWING INVALID.
 FOR UNTOLERANCED DIMENSIONS REFER MDG0008 DATE OF FIRST ISSUE 17/09/2010

WELD LENGTH	ITEM	DESCRIPTION & DIMENSIONS	OPASSY	DETAIL DRG	MATL. & SPEC.	REMARKS
NIL	H	GROUP ELECTRICAL	FILE	DTA\CC74247d.prt	SUPERSEDES: CC74247c.prt	
NIL	KG	WEIGHT				
NIL	M ²	S. AREA				
NIL	M	LENGTH / Ø				
NIL	H	WIDTH / THICK				
NIL	H	HEIGHT				
NIL	H	SCALE	ISS/ED			
			CRD			
			DRN			
			REFRANK	NIL		
			PL NO.	NIL		
			DRG. NO	CC74247		
			DY. DES/DRD	ALT.	9	12
			SEE/D&D	11	13	

RAIL COACH FACTORY, KAPURTHALA
 रेल कोच कार्पोरेशन
 17/9

ALT. NO. d
 ALT. DATE 24/07/2019
 ZONE F-1
 ALTERATIONS
 1. NOTE-5,9 & 10 MODIFIED.
 2. NOTE-12&13 ADDED & DRAWING MODIFIED ED190008 ACCORDINGLY.
 AUTHORITY
 D.I.C. NO.
 ED190008