

Set of Switch plate assembly for Guard compartment of DSLR Coaches**Table-1**

Switch plate assembly for DSLR coaches for controlling guard compartment lighting & fannage, luggage compartment lighting, Tail lamp side lamp from guard compartment.

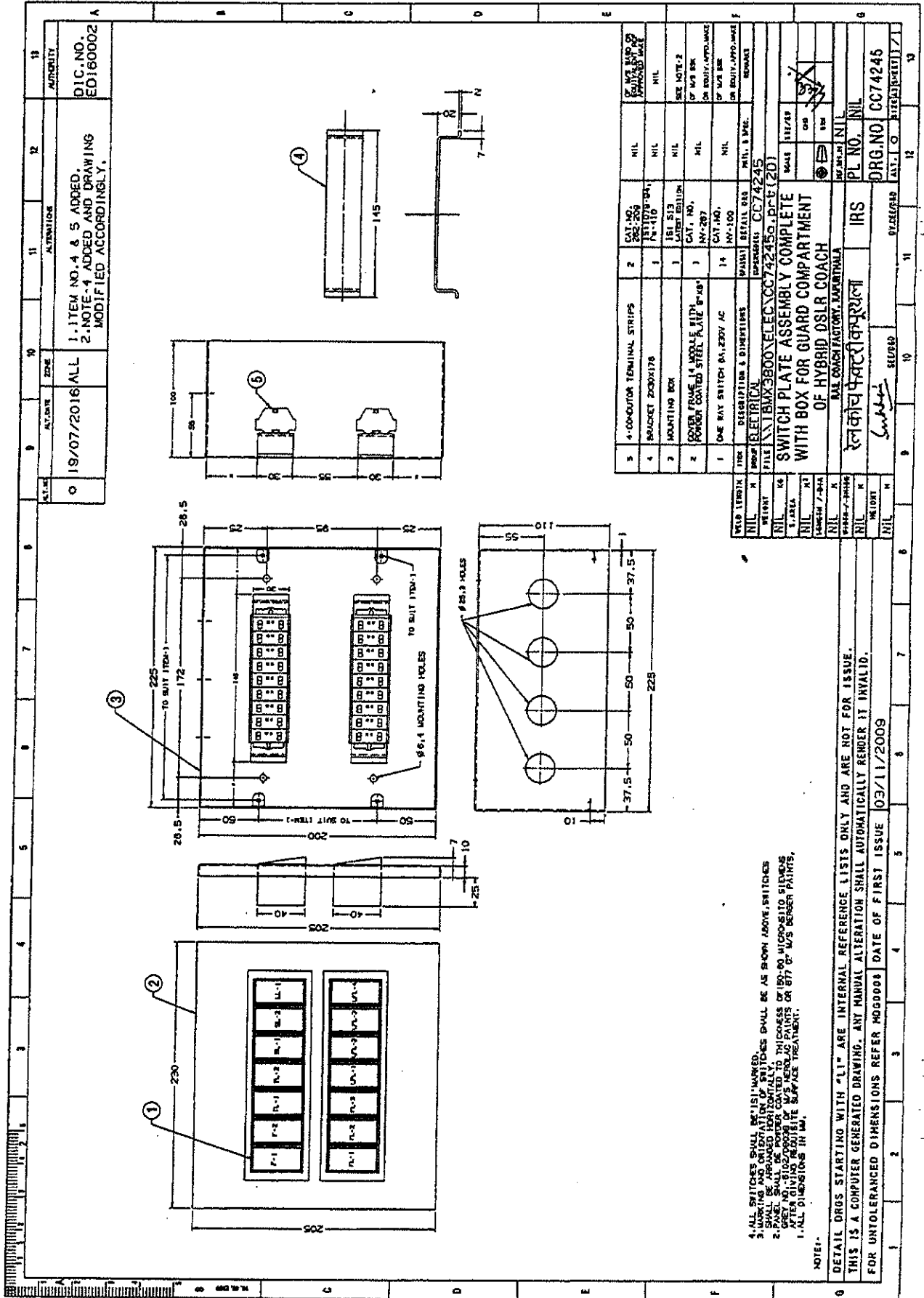
Item no.	Description	Drawing no.	Qty.
1.	Switch plate assembly complete with polycarbonate cover frame and powder coated steel plate with 14 nos. ON-OFF switches and 6A,240V AC, a	CC74245, Alt-'a' item-1 & 2	1 set
2.	Mounting Box	CC74245, Alt-'a' item-5	1 No.

- N.B :
1. Marking and orientation of switches shall be as per drawing no.CC74245Alt-'a' Switches shall be arranged horizontally.
 2. Complete unit shall be supplied in assembled and ready to fit condition.
 3. Firm shall get validated one prototype sample from CCE/RCF before commencing bulk.
 4. All switches shall be 'ISI' marked.

Packing conditions of switch plates shall be as follows:

- Stage 1: Standard packing of switch plates mentioned above as per packing conditions document no. PI042.
- Stage 2: Packing per coach set as per packing conditions document no. PI021. Each packing shall be legibly marked for the type of coach applicable.
- Stage 3: Bulk packing coach wise as per packing conditions document no. PI032. Each packing shall be legibly marked for the type of coach/coaches applicable for.

EDML-114	2	08.08.16	<i>[Signature]</i>	-	<i>[Signature]</i>	1 of 1
Document no.	Rev.	Date	SSE/CAD	SEE/D	DY.CEE/D&D	Page no.



DATE: 19/07/2016
 ZONE: ALL
 AUTHORITY: D.C. NO. ED160002
 1. ITEM NO. 4 & 5 ADDED.
 2. NOTE-4 ADDED AND DRAWING MODIFIED ACCORDINGLY.

ITEM NO.	DESCRIPTION	QTY	UNIT	REMARKS
1	4-ON-OUTER TERMINAL STRIPS	2	EA	CAT. NO. NY-100
2	BRACKET 200X178	1	EA	CAT. NO. NY-110
3	4-ON-OUTER TERMINAL STRIPS	2	EA	CAT. NO. NY-100
4	BRACKET 200X178	1	EA	CAT. NO. NY-110
5	4-ON-OUTER TERMINAL STRIPS	2	EA	CAT. NO. NY-100
6	BRACKET 200X178	1	EA	CAT. NO. NY-110
7	4-ON-OUTER TERMINAL STRIPS	2	EA	CAT. NO. NY-100
8	BRACKET 200X178	1	EA	CAT. NO. NY-110
9	4-ON-OUTER TERMINAL STRIPS	2	EA	CAT. NO. NY-100
10	BRACKET 200X178	1	EA	CAT. NO. NY-110
11	4-ON-OUTER TERMINAL STRIPS	2	EA	CAT. NO. NY-100
12	BRACKET 200X178	1	EA	CAT. NO. NY-110
13	4-ON-OUTER TERMINAL STRIPS	2	EA	CAT. NO. NY-100
14	BRACKET 200X178	1	EA	CAT. NO. NY-110
15	4-ON-OUTER TERMINAL STRIPS	2	EA	CAT. NO. NY-100
16	BRACKET 200X178	1	EA	CAT. NO. NY-110
17	4-ON-OUTER TERMINAL STRIPS	2	EA	CAT. NO. NY-100
18	BRACKET 200X178	1	EA	CAT. NO. NY-110
19	4-ON-OUTER TERMINAL STRIPS	2	EA	CAT. NO. NY-100
20	BRACKET 200X178	1	EA	CAT. NO. NY-110

NOTE:
 1. ALL SWITCHES SHALL BE 15A MARKED.
 2. MARKING SHALL BE AS SHOWN ABOVE, SWITCHES SHALL BE APPROVED HORIZONTALLY.
 3. PANEL SHALL BE POWDER COATED TO THICKNESS OF 150-200 MICROS TO SILENCE AFTER GIVING PROTECTIVE SURFACE TREATMENT.
 4. ALL DIMENSIONS IN MM.

DETAIL DRGS STARTING WITH "LI" ARE INTERNAL REFERENCE LISTS ONLY AND ARE NOT FOR ISSUE.
 THIS IS A COMPUTER GENERATED DRAWING. ANY MANUAL ALTERATION SHALL AUTOMATICALLY RENDER IT INVALID.
 FOR UNTOLERANCED DIMENSIONS REFER M060000 DATE OF FIRST ISSUE 03/11/2009

FIELD	TERMINAL	ITEM	DESCRIPTION	QTY	UNIT	REMARKS
1	1	1	4-ON-OUTER TERMINAL STRIPS	2	EA	CAT. NO. NY-100
2	2	1	BRACKET 200X178	1	EA	CAT. NO. NY-110
3	3	1	4-ON-OUTER TERMINAL STRIPS	2	EA	CAT. NO. NY-100
4	4	1	BRACKET 200X178	1	EA	CAT. NO. NY-110
5	5	1	4-ON-OUTER TERMINAL STRIPS	2	EA	CAT. NO. NY-100
6	6	1	BRACKET 200X178	1	EA	CAT. NO. NY-110
7	7	1	4-ON-OUTER TERMINAL STRIPS	2	EA	CAT. NO. NY-100
8	8	1	BRACKET 200X178	1	EA	CAT. NO. NY-110
9	9	1	4-ON-OUTER TERMINAL STRIPS	2	EA	CAT. NO. NY-100
10	10	1	BRACKET 200X178	1	EA	CAT. NO. NY-110
11	11	1	4-ON-OUTER TERMINAL STRIPS	2	EA	CAT. NO. NY-100
12	12	1	BRACKET 200X178	1	EA	CAT. NO. NY-110
13	13	1	4-ON-OUTER TERMINAL STRIPS	2	EA	CAT. NO. NY-100
14	14	1	BRACKET 200X178	1	EA	CAT. NO. NY-110
15	15	1	4-ON-OUTER TERMINAL STRIPS	2	EA	CAT. NO. NY-100
16	16	1	BRACKET 200X178	1	EA	CAT. NO. NY-110
17	17	1	4-ON-OUTER TERMINAL STRIPS	2	EA	CAT. NO. NY-100
18	18	1	BRACKET 200X178	1	EA	CAT. NO. NY-110
19	19	1	4-ON-OUTER TERMINAL STRIPS	2	EA	CAT. NO. NY-100
20	20	1	BRACKET 200X178	1	EA	CAT. NO. NY-110

FILE: X:\BANK\3800\ELEC\CC74245.DWG
 SWITCH PLATE ASSEMBLY COMPLETE
 WITH BOX FOR GUARD COMPARTMENT
 OF HYBRID DSLR COACH
 RAJ COACH FACTORY, RAJOURNATHA
 DATE: 19/07/2016
 ZONE: ALL
 AUTHORITY: D.C. NO. ED160002
 1. ITEM NO. 4 & 5 ADDED.
 2. NOTE-4 ADDED AND DRAWING MODIFIED ACCORDINGLY.

FIELD	TERMINAL	ITEM	DESCRIPTION	QTY	UNIT	REMARKS
1	1	1	4-ON-OUTER TERMINAL STRIPS	2	EA	CAT. NO. NY-100
2	2	1	BRACKET 200X178	1	EA	CAT. NO. NY-110
3	3	1	4-ON-OUTER TERMINAL STRIPS	2	EA	CAT. NO. NY-100
4	4	1	BRACKET 200X178	1	EA	CAT. NO. NY-110
5	5	1	4-ON-OUTER TERMINAL STRIPS	2	EA	CAT. NO. NY-100
6	6	1	BRACKET 200X178	1	EA	CAT. NO. NY-110
7	7	1	4-ON-OUTER TERMINAL STRIPS	2	EA	CAT. NO. NY-100
8	8	1	BRACKET 200X178	1	EA	CAT. NO. NY-110
9	9	1	4-ON-OUTER TERMINAL STRIPS	2	EA	CAT. NO. NY-100
10	10	1	BRACKET 200X178	1	EA	CAT. NO. NY-110
11	11	1	4-ON-OUTER TERMINAL STRIPS	2	EA	CAT. NO. NY-100
12	12	1	BRACKET 200X178	1	EA	CAT. NO. NY-110
13	13	1	4-ON-OUTER TERMINAL STRIPS	2	EA	CAT. NO. NY-100
14	14	1	BRACKET 200X178	1	EA	CAT. NO. NY-110
15	15	1	4-ON-OUTER TERMINAL STRIPS	2	EA	CAT. NO. NY-100
16	16	1	BRACKET 200X178	1	EA	CAT. NO. NY-110
17	17	1	4-ON-OUTER TERMINAL STRIPS	2	EA	CAT. NO. NY-100
18	18	1	BRACKET 200X178	1	EA	CAT. NO. NY-110
19	19	1	4-ON-OUTER TERMINAL STRIPS	2	EA	CAT. NO. NY-100
20	20	1	BRACKET 200X178	1	EA	CAT. NO. NY-110