

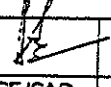

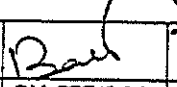
Set of Cage Clamp Terminals for Hybrid DSLR coach

This document pertains to set of cage clamp terminals required for roof wiring of Hybrid DSLR coach. Set of cage clamp terminals are supplied in complete coach set as tabulated below.

Item No.	Description	Qty/coach set
1.	Set of Cage Clamp Terminals for Compartment as per drawing no. CC72069, alt. 'a'	10
2.	Set of Cage Clamp Terminals for Doorway as per drawing no. CC72070, alt. 'a'	4

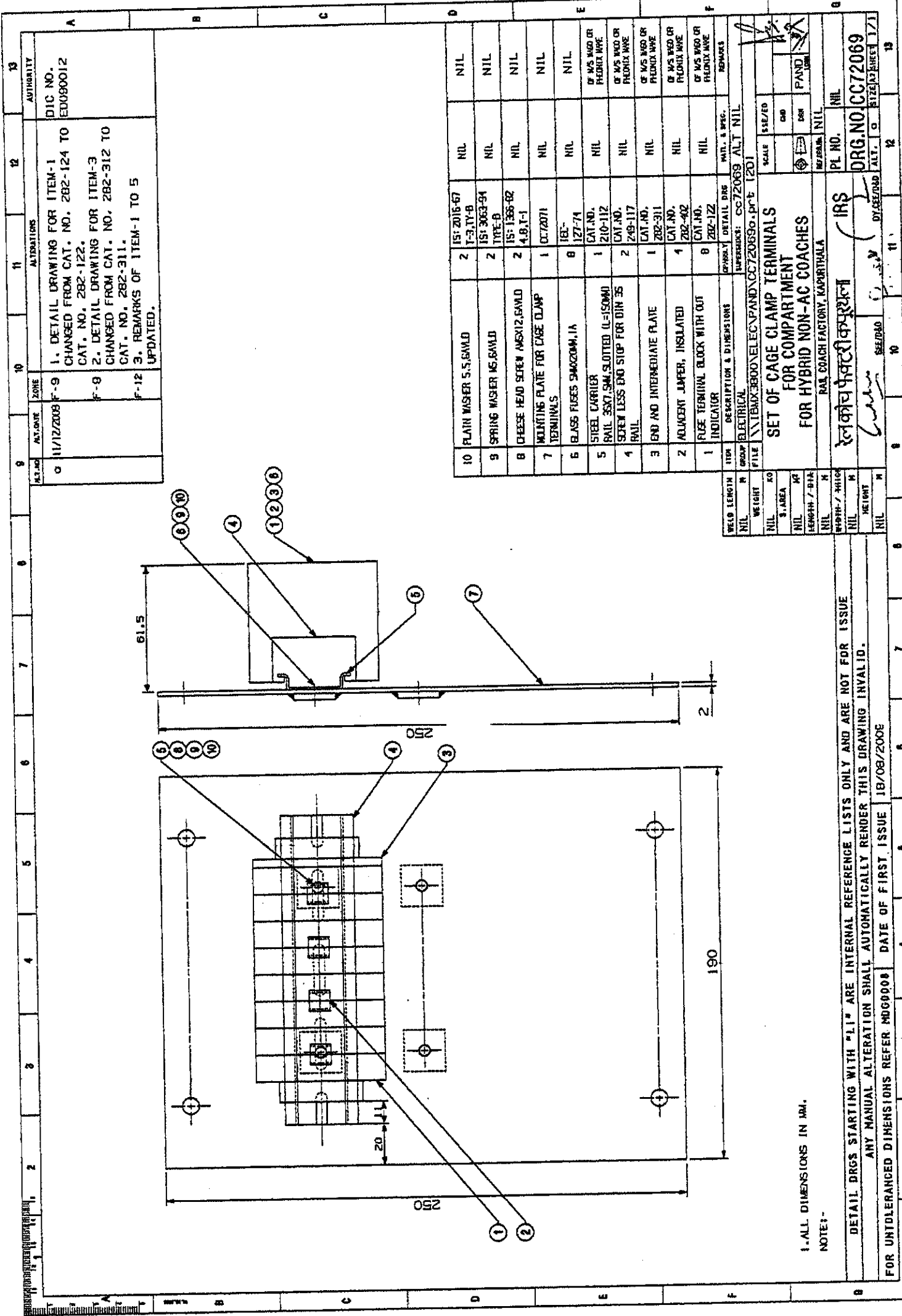
**N.B.:**

1. Firm supplying first time shall get one prototype sample validated on one coach before commencing bulk supplies.
2. Set of cage clamp terminals shall be supplied in assembled and in ready to fit condition as per respective drawing.

EDML-113	01	12/11/2009				1 of 1
Document no.	Rev.	Date	SE/CAD	SEE/D	DY.CEE/D&D	Date

File name: C:\Documents and Settings\user\My Documents\mkt\_123.114\EDML\EDML-113\_R1.doc  
Date: 12/11/2009

R.C.F.



ALT. NO.	DATE	ZONE	ALTERATIONS	AUTHORITY
0	11/17/2008	F-9	1. DETAIL DRAWING FOR ITEM-1 CHANGED FROM CAT. NO. 282-124 TO CAT. NO. 282-122. 2. DETAIL DRAWING FOR ITEM-3 CHANGED FROM CAT. NO. 282-312 TO CAT. NO. 282-311.	ED090012
		F-12	3. REMARKS OF ITEM-1 TO 5 UPDATED.	

ITEM NO.	DESCRIPTION	QTY	UNIT	REMARKS
10	PLAIN WASHER 5.5,SAWLD	2	157 2018-67 T-3,TY-B	NIL
9	SPRING WASHER M5,SAWLD	2	151 3063-94 TTYE-B	NIL
8	CHEESE HEAD SCREW M5X12,SAWLD	2	157 1366-82 A,B,T-1	NIL
7	MOUNTING PLATE FOR CAGE CLAMP TERMINALS	1	0072071	NIL
6	GLASS FIBRES 5MMX20MM,IA	8	187-74	NIL
5	STEEL CARRIER	1	CAT.NO.	NIL
4	RAIL 35X7.5MM, SLOTTED (L=150MM) SCREW LESS END STOP FOR DIN 35	2	210-112 CAT.NO.	OF M/S WSD OR FREEDX WRE
3	END AND INTERMEDIATE PLATE	1	249-117 CAT.NO.	OF M/S WSD OR FREEDX WRE
2	ADJUCENT LAMPER, INSULATED	1	282-311 CAT.NO.	OF M/S WSD OR FREEDX WRE
1	RICE TERMINAL BLOCK WITH OUT INDICATOR	8	282-402 CAT.NO.	OF M/S WSD OR FREEDX WRE

WELD LENGTH	GROUP	DESCRIPTION & DIMENSIONS	DETAIL DRG	W.M.T. & WRE.
NIL	ELECTRICAL		CC:72069	ALT: NIL
WEIGHT	FILE	IBEMX3600\ELEC\FAND\CC720690.dwg	DATE: 12/01	
S. AREA				
LENGTH / DIA				
NIL				
WEIGHT				

SET OF CAGE CLAMP TERMINALS FOR COMPARTMENT FOR HYBRID NON-AC COACHES

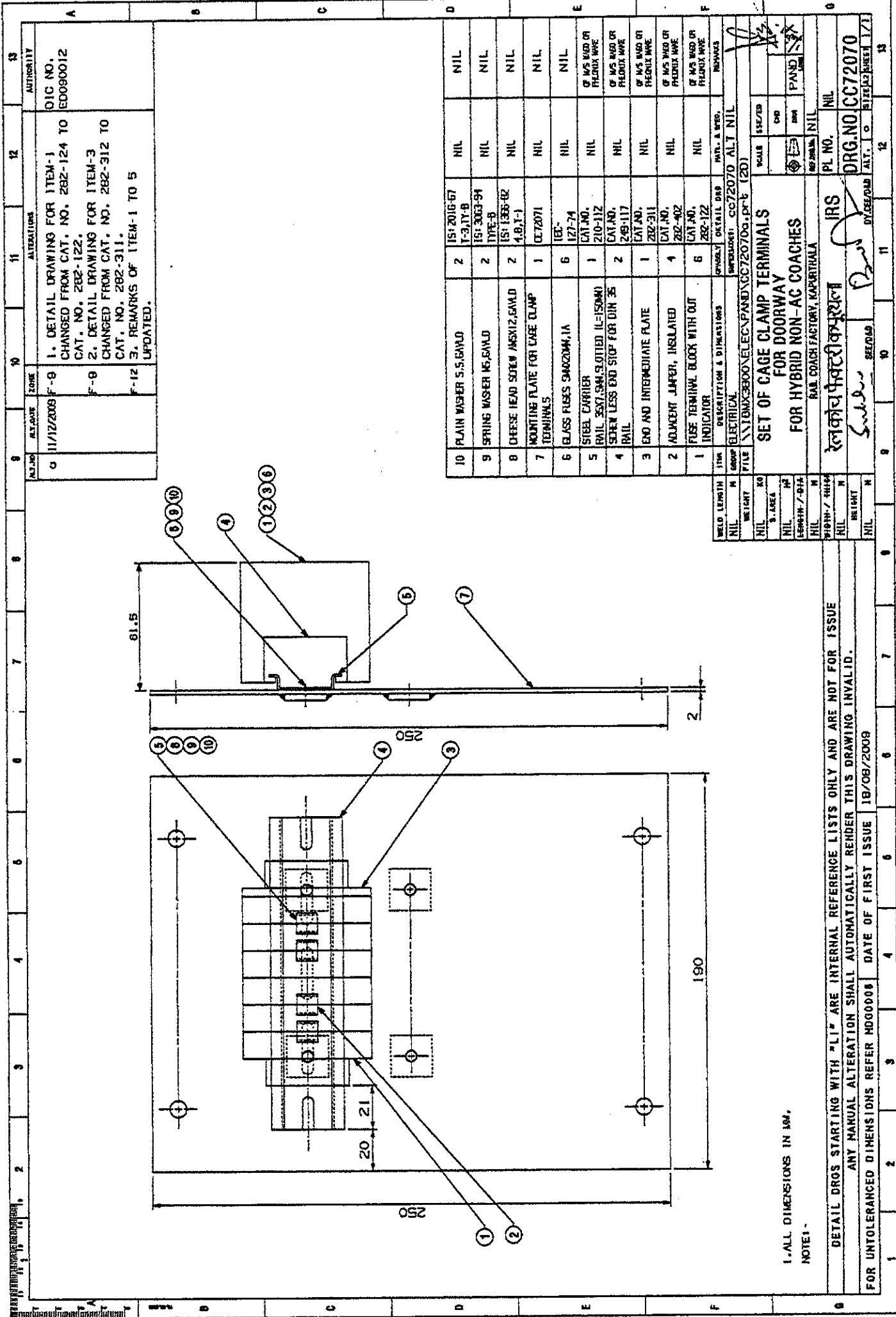
PAAL COACH FACTORY, KANPUR, INDIA

PL. NO. NIL  
 DRG. NO. CC72069  
 DATE: 12/01

1. ALL DIMENSIONS IN MM.  
 NOTE:-

DETAIL DRGS STARTING WITH "11" ARE INTERNAL REFERENCE LISTS ONLY AND ARE NOT FOR ISSUE  
 ANY MANUAL ALTERATION SHALL AUTOMATICALLY RENDER THIS DRAWING INVALID.

FOR UNTOLERANCED DIMENSIONS REFER MDG-0008 DATE OF FIRST ISSUE 18/08/2008



1. ALL DIMENSIONS IN MM.  
NOTE: -

DETAIL DROS STARTING WITH "LI" ARE INTERNAL REFERENCE LISTS ONLY AND ARE NOT FOR ISSUE  
ANY MANUAL ALTERATION SHALL AUTOMATICALLY RENDER THIS DRAWING INVALID.  
FOR UNTOLERANCED DIMENSIONS REFER MD00008 DATE OF FIRST ISSUE 18/08/2008

1. DETAIL DRAWING FOR ITEM-1 CHANGED FROM CAT. NO. 282-124 TO 01C NO. ED090012  
2. DETAIL DRAWING FOR ITEM-3 CHANGED FROM CAT. NO. 282-312 TO 282-311.  
3. REMARKS OF ITEM-1 TO 5 UPDATED.

NO.	QTY	DESCRIPTION	REF.	REMARKS
10	2	PLAIN WASHER S.S. 6A10	1S1 2016-87	NIL
9	2	SPRING WASHER 16.SA10	1S1 3003-94	NIL
8	2	CHEESE HEAD SCREW 4.8.12.3	1S1 1306-82	NIL
7	1	MOUNTING PLATE FOR CAGE CLAMP TERMINALS	07/2071	NIL
6	6	GLASS FUSES 5A0020M, 1A	1E6-127-74	NIL
5	1	STEEL CARRIER (RAIL 35X7.5M, SLOTTED 1L=150MM)	CAT.NO. 270-112	NIL
4	2	SCREW LESS END STOP FOR DIN 35 RAIL	CAT.NO. 249-117	NIL
3	1	END AND INTERMEDIATE PLATE	CAT.NO. 282-311	NIL
2	1	ADVANCED JUMPER, INSULATED	CAT.NO. 282-402	NIL
1	6	FUSE TERMINAL BLOCK WITH OUT INDICATOR	CAT.NO. 282-122	NIL

SET OF CAGE CLAMP TERMINALS FOR DOORWAY FOR HYBRID NON-AC COACHES  
RAIL COACH FACTORY, KAPURTHALA

PL NO. NIL  
ORG. NO. CC72070  
DATE OF ISSUE 18/08/2008  
SIZE A3 SHEET 1/1

18/08/2008  
18/08/2008

18/08/2008

18/08/2008

18/08/2008

18/08/2008

18/08/2008

18/08/2008

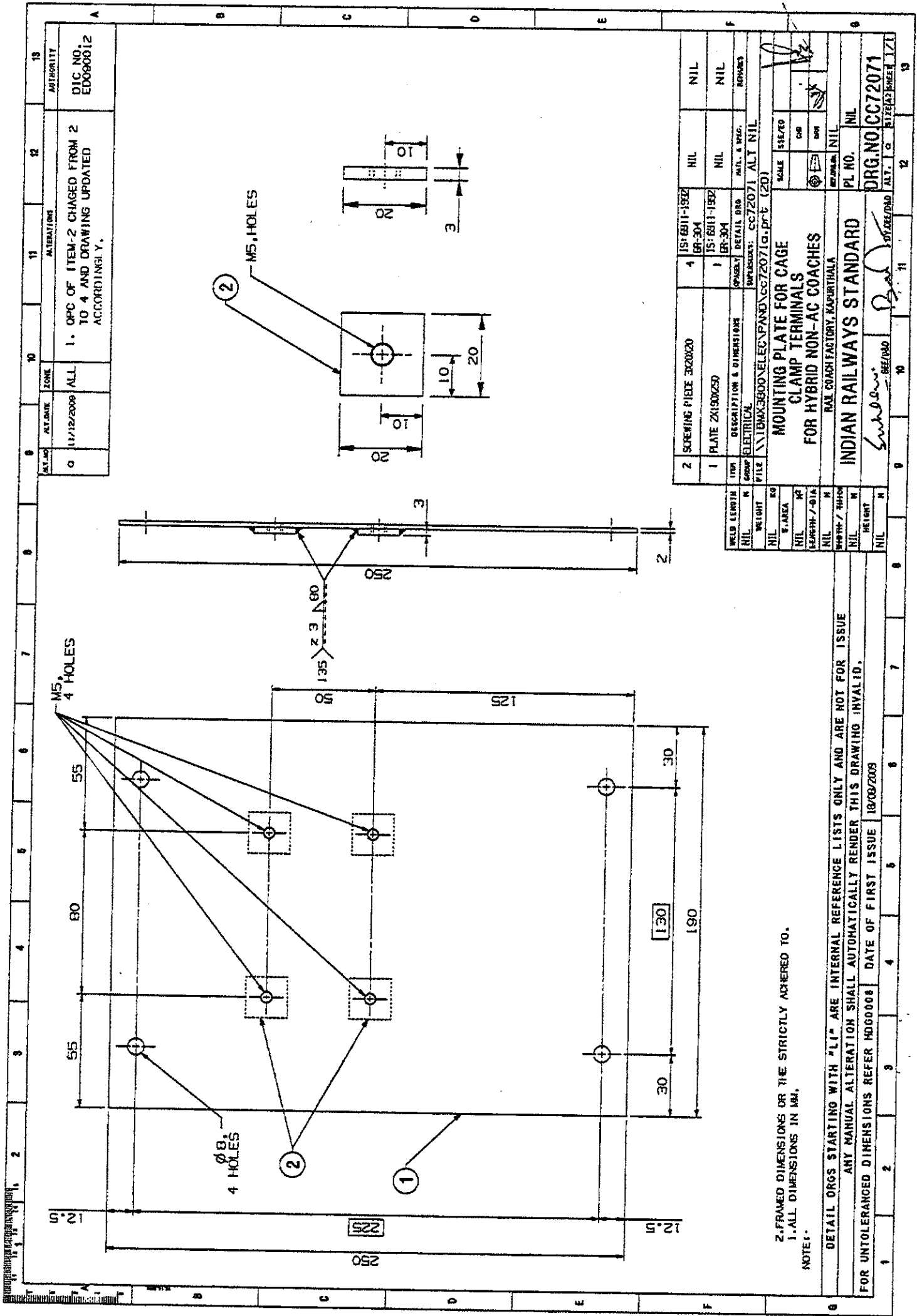
18/08/2008

18/08/2008

18/08/2008

18/08/2008

18/08/2008



1. OPC OF ITEM-2 CHANGED FROM 2 TO 4 AND DRAWING UPDATED ACCORDINGLY.

11/12/2009 ALL

15-6111-1922

DRG NO CC72071

INDIAN RAILWAYS STANDARD

RAIL COACH FACTORY, KAPURTHALA

SCALE 5:50

PL NO. NIL

DRG NO CC72071

18/00/2009

2-FRAMED DIMENSIONS OR THE STRICTLY ADHERED TO.  
 1-ALL DIMENSIONS IN MM.

DETAIL DRGS STARTING WITH "LI" ARE INTERNAL REFERENCE LISTS ONLY AND ARE NOT FOR ISSUE  
 ANY MANUAL ALTERATION SHALL AUTOMATICALLY RENDER THIS DRAWING INVALID.  
 FOR UNTOLERANCED DIMENSIONS REFER HDG0008 DATE OF FIRST ISSUE 18/00/2009

2. SCREWING PIECE 3X20X20

1. PLATE 2X190X250

ITEM GROUP ELECTRICAL

DETAIL DRG

DRG NO. CC72071

15-6111-1922

15-6111-1922

15-6111-1922

SCALE 5:50

PL NO. NIL

DRG NO CC72071

18/00/2009