


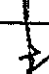
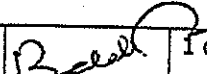
Set of Cage Clamp Terminals for Hybrid SCN coach

This document pertains to set of cage clamp terminals required for roof wiring of Hybrid SCN coach. Set of cage clamp terminals are supplied in complete coach set as tabulated below.

Item No.	Description	Qty/coach set
1.	Set of Cage Clamp Terminals for Compartment as per drawing no. CC72069, alt. 'a'	20
2.	Set of Cage Clamp Terminals for Doorway as per drawing no. CC72070, alt. 'a'	4

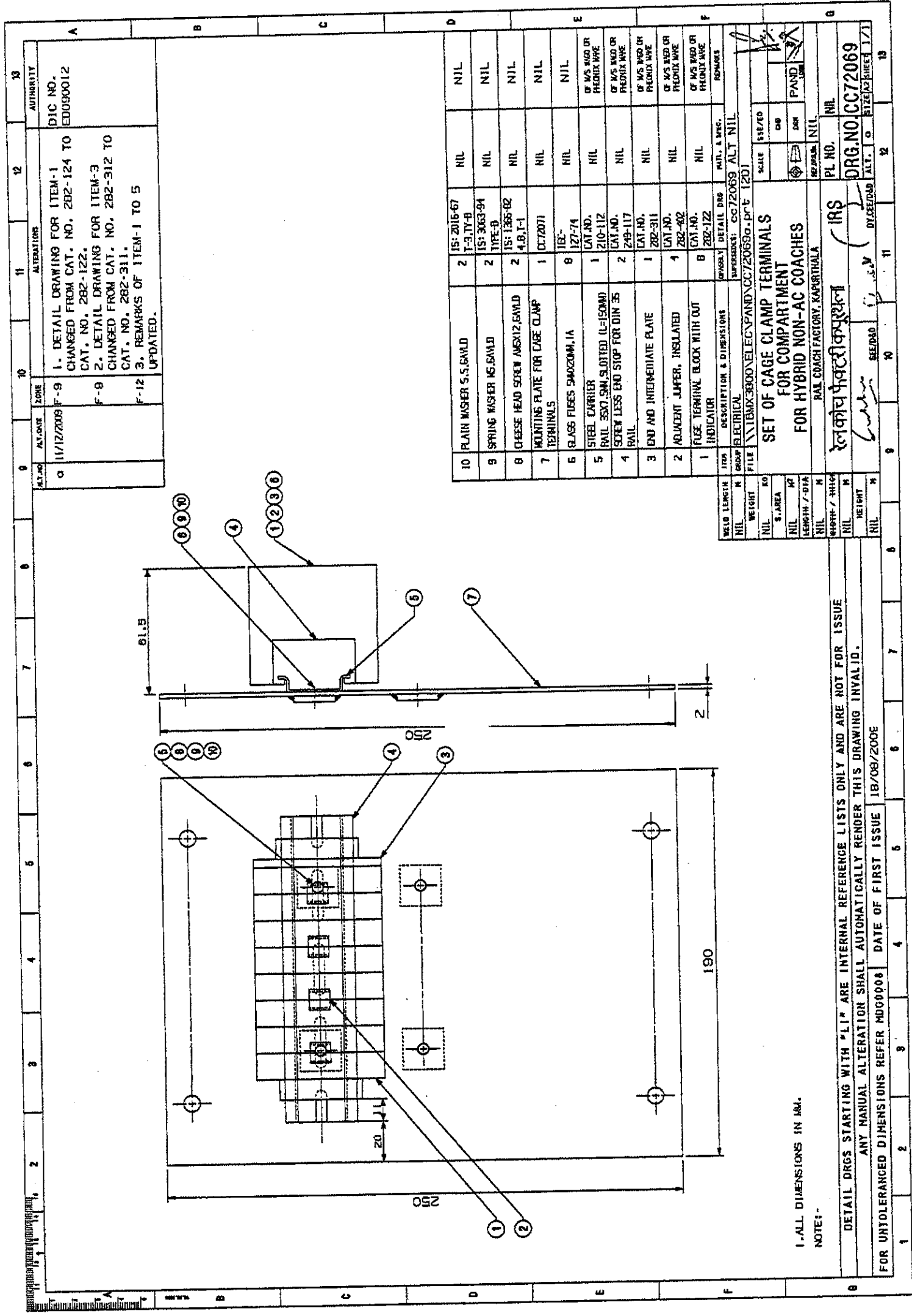
N.B.:

1. Firm supplying first time shall get one prototype sample validated on one coach before commencing bulk supplies.
2. Set of cage clamp terminals shall be supplied in assembled and in ready to fit condition as per respective drawing.

EDML-112	01	12/11/2009				1 of 1
Document no.	Rev.	Date	SE/CAD	SEE/D	DY.CEE/D&D	Date

File name: C:\Documents and Settings\user\My Documents\mtda_123.114\EDML\EDML-112_R1.doc
Date: 12/11/2009

R.C.F.



11	ALTERATIONS	11	12	13
9	ALT. DATE	10	11	12
8	ALT. ZONE	9	10	11
7	ALT. NO.	8	9	10
6	ALT. DATE	7	8	9
5	ALT. ZONE	6	7	8
4	ALT. NO.	5	6	7
3	ALT. DATE	4	5	6
2	ALT. ZONE	3	4	5
1	ALT. NO.	2	3	4

10	PLAIN WASHER S.S. 6AWD	2	IS: 2016-67	NIL	NIL
9	SPRING WASHER 16.6AWD	2	IS: 3063-94	NIL	NIL
8	WEESE HEAD SCREW 16X12.6AWD	2	TYPE-B	NIL	NIL
7	MOUNTING PLATE FOR CAGE CLAMP TERMINALS	1	IS: 1365-82	NIL	NIL
6	GLASS FIBRE 50X20MM. I.A	8	4.8.1-1	NIL	NIL
5	STEEL CARRIER	1	DT: 2071	NIL	NIL
4	RAIL 55X7.5MM. SLOTTED (L=150MM) SCREW LESS END STOP FOR DIN 35	2	16C-127-74	NIL	NIL
3	END AND INTERMEDIATE PLATE	1	210-112	NIL	OF M/S WED OR PRECHIX WRE
2	ADJACENT JUMPER, INSULATED	4	249-117	NIL	OF M/S WED OR PRECHIX WRE
1	FUSE TERMINAL BLOCK WITH OUT INDICATOR	8	CAT. NO. 202-311	NIL	OF M/S WED OR PRECHIX WRE

WELD LENGTH	NIL	GROUP	ELECTRICAL	DESCRIPTION & DIMENSIONS	GROUPS	DETAIL DISG	MIL. & SPEC.	REMARKS
WEIGHT	NIL	FILE	ITEMX-3800-VELECPAND/CC72069-DP-C-1201	SET OF CAGE CLAMP TERMINALS FOR COMPARTMENT FOR HYBRID NON-AC COACHES	SCALE	55E/ED	CHD	
S. AREA	NIL	NO			DR			
LENGTH / DIA	NIL	HT			DR			
HEIGHT	NIL	HT			DR			
PL NO.	NIL	PL NO.	NIL		DR			
DRG. NO.	CC72069	DRG. NO.	CC72069		DR			

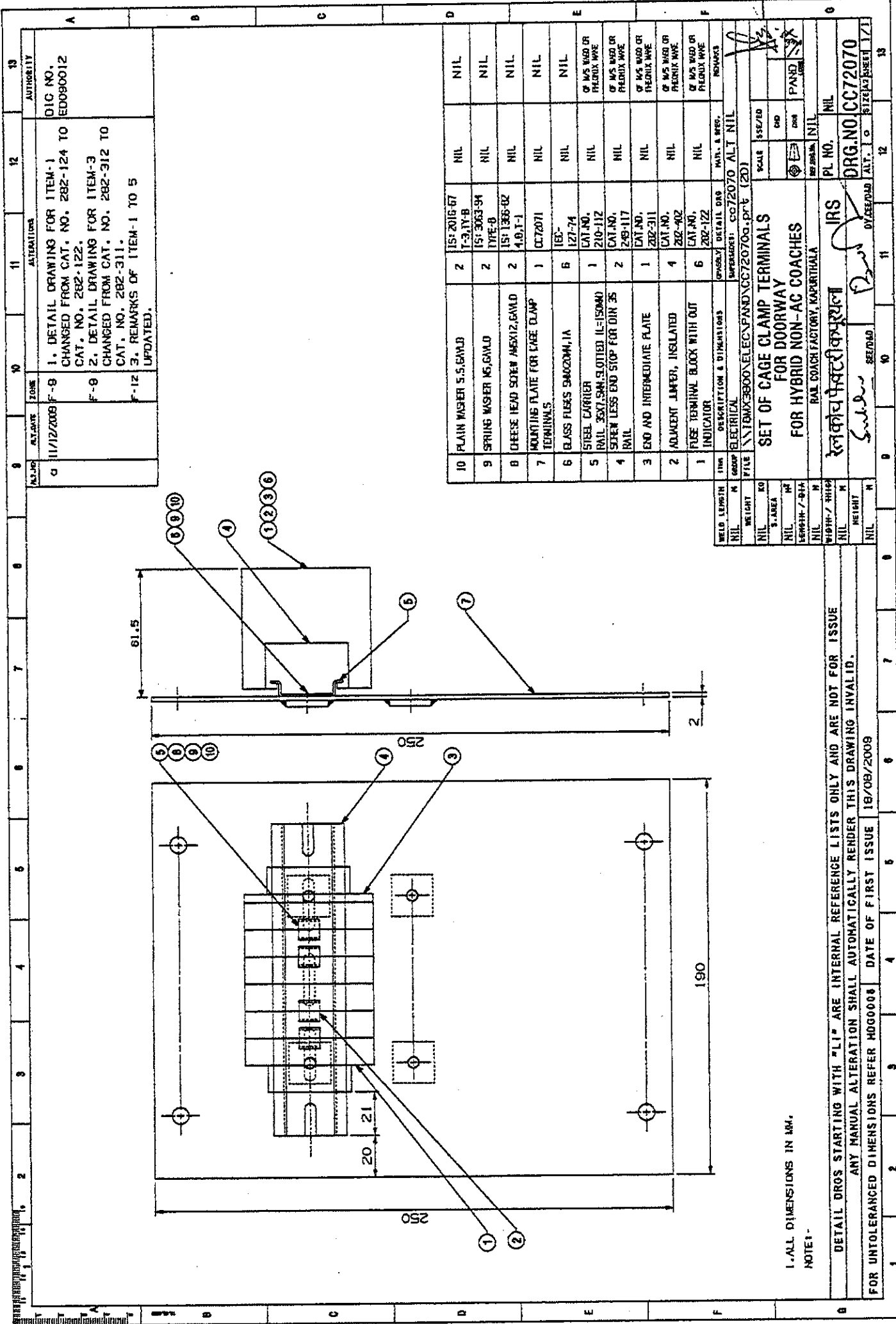
1. ALL DIMENSIONS IN MM.

NOTE -

DETAIL DRGS STARTING WITH "LI" ARE INTERNAL REFERENCE LISTS ONLY AND ARE NOT FOR ISSUE

ANY MANUAL ALTERATION SHALL AUTOMATICALLY RENDER THIS DRAWING INVALID.

FOR UNTOLERANCED DIMENSIONS REFER MDC0008 DATE OF FIRST ISSUE 18/08/2006



NOTE 1 -
1. ALL DIMENSIONS IN MM.

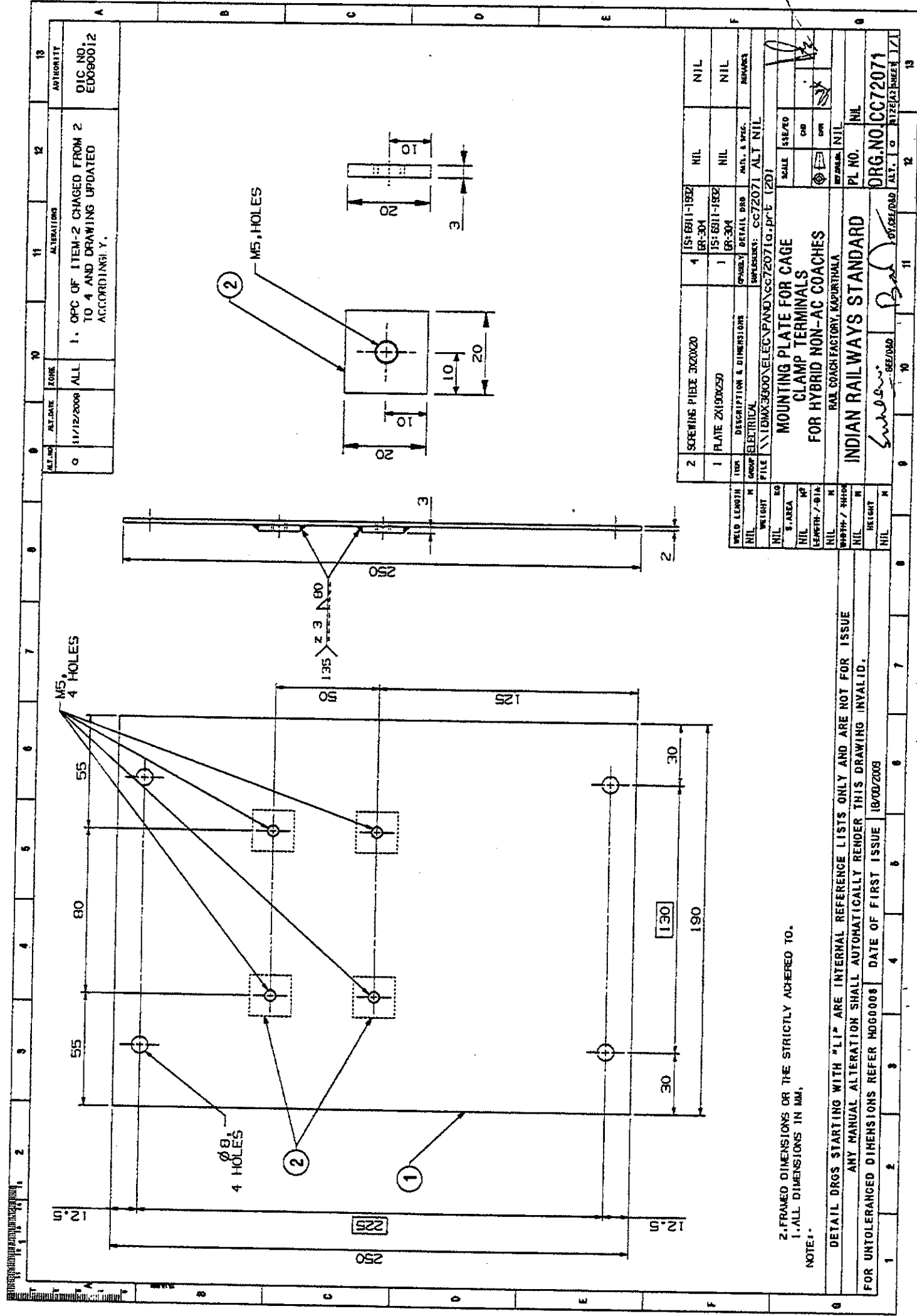
DETAIL DROS STARTING WITH "L1" ARE INTERNAL REFERENCE LISTS ONLY AND ARE NOT FOR ISSUE
ANY MANUAL ALTERATION SHALL AUTOMATICALLY RENDER THIS DRAWING INVALID.

FOR UNTOLERANCED DIMENSIONS REFER HDG0008 DATE OF FIRST ISSUE 16/08/2008

11/12/2008	F-9	1. DETAIL DRAWING FOR ITEM-1 CHANGED FROM CAT. NO. 282-124 TO CAT. NO. 282-122. 2. DETAIL DRAWING FOR ITEM-3 CHANGED FROM CAT. NO. 282-312 TO CAT. NO. 282-311. 3. REMARKS OF ITEM-1 TO 5 UPDATED.	12	13
11/12/2008	F-9			
	F-12			

10	PLAIN WASHER 5.5.GAWD	2	IS: 2016-67 T-3, T-8	NIL	NIL
9	SPRING WASHER M5.GAWD	2	IS: 3063-94 TYPE-B	NIL	NIL
8	CHEESE HEAD SCREW M5X12.GAWD	2	IS: 1305-82 A, B, T-1	NIL	NIL
7	MOUNTING PLATE FOR CAGE CLAMP TERMINALS	1	CC72071	NIL	NIL
6	GLASS FLEES 50X200X1A	6	IEE- I27-74	NIL	NIL
5	STEEL CARRIER	1	CAT.NO. 210-112	NIL	OF M5 WSD OR FLEXIUX WPE
4	RAIL 35X7.5MM SLOTTED IL-150MM SCREW LESS END STOP FOR DIN 35 RAIL	2	CAT.NO. 249-117	NIL	OF M5 WSD OR FLEXIUX WPE
3	END AND INTERMEDIATE FLATE	1	CAT.NO. 202-311	NIL	OF M5 WSD OR FLEXIUX WPE
2	ADJUMENT LIMPER, INSULATED	4	CAT.NO. 202-402	NIL	OF M5 WSD OR FLEXIUX WPE
1	RISE TERMINAL BLOCK WITH OUT INDICATOR	6	CAT.NO. 202-122	NIL	OF M5 WSD OR FLEXIUX WPE

WELD LENGTH	NIL	DESCRIPTION & DIMENSIONS	SCALE	ISSUED
WEIGHT	NIL	GROUP	DATE	BY
S. AREA	NIL	FILE	NO.	FOR
LENGTH / DIA	NIL	DETAILS	PL NO.	PL
WIDTH / THICK	NIL	SUPPLIER	DRG NO.	DRG
HEIGHT	NIL	CC72070 ALT NIL	CC72070	CC72070
		SET OF CAGE CLAMP TERMINALS FOR DOORWAY FOR HYBRID NON-AC COACHES	ALT. 1 TO	SIZE 23 SHEET 1/1
		RAIL COACH FACTORY, KAPRITHALA	DATE	13



2. FRAMED DIMENSIONS OR THE STRICTLY ADHERED TO.
 1. ALL DIMENSIONS IN MM.

NOTE: 1. DETAIL DRGS STARTING WITH "L1" ARE INTERNAL REFERENCE LISTS ONLY AND ARE NOT FOR ISSUE
 ANY MANUAL ALTERATION SHALL AUTOMATICALLY RENDER THIS DRAWING INVALID.
 FOR UNTOLERANCED DIMENSIONS REFER HDG0008 DATE OF FIRST ISSUE 18/03/2009

WELD LENGTH	NIL	ITEM	DESCRIPTION & DIMENSIONS	IS:6811-1992	NIL	NIL
NIL	NIL	GROUP	ELECTRICAL	ER-304	NIL	NIL
WEIGHT	NIL	FILE	INDIA-3000-ELEC/PANO/CC72071a.prt (ZDI)	ER-304	NIL	NIL
S. AREA	NIL	SCALE	1:1	SCALE	1:1	NIL
NIL	NIL	DATE	18/03/2009	DATE	18/03/2009	NIL
LENGTH / DIA	NIL	PL NO.	CC72071	PL NO.	CC72071	NIL
DEPTH / THICK	NIL	ORG. NO.	CC72071	ORG. NO.	CC72071	NIL
NIL	NIL	REV. NO.	01	REV. NO.	01	NIL
HEIGHT	NIL	DRG. NO.	CC72071	DRG. NO.	CC72071	NIL
NIL	NIL	ALT. 1	01	ALT. 1	01	NIL

INDIAN RAILWAYS STANDARD
 RAJ COACH FACTORY, KAPURTHALA

11 12 13
 10 11 12 13
 9 10 11 12 13