

Set of Cage Clamp Terminals for Hybrid GS coach

This document pertains to set of cage clamp terminals required for roof wiring of Hybrid GS coach. Set of cage clamp terminals are supplied in complete coach set as tabulated below.

Item No.	Description	Qty/coach set
1.	Set of Cage Clamp Terminals for Compartment as per drawing no. CC72069, alt. 'a'	20
2.	Set of Cage Clamp Terminals for Doorway as per drawing no. CC72070, alt. 'a'	6

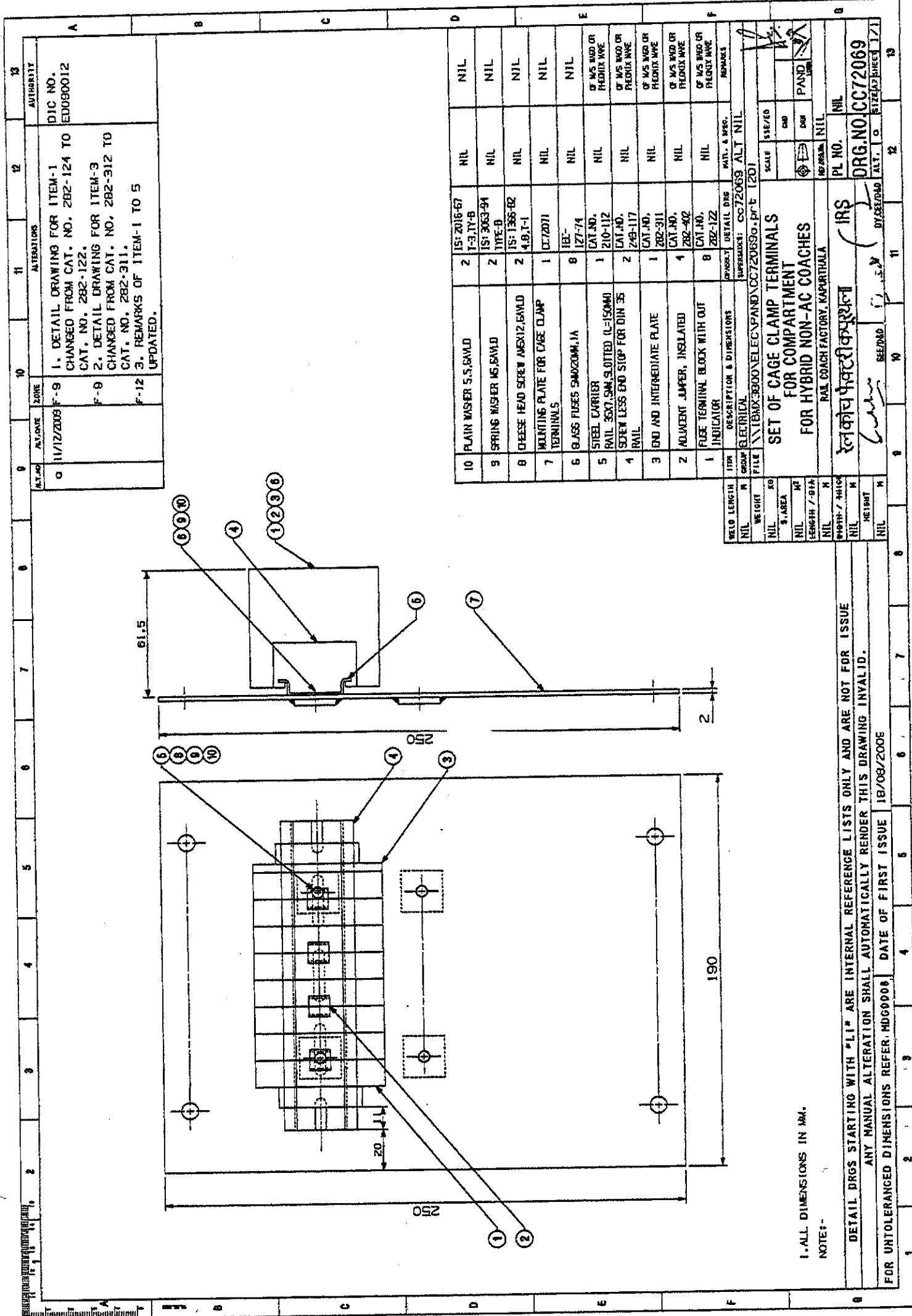
N.B.:

1. Firm supplying first time shall get one prototype sample validated on one coach before commencing bulk supplies.
2. Set of cage clamp terminals shall be supplied in assembled and in ready to fit condition as per respective drawing.

EDML-111	01	12/11/2009	<i>[Signature]</i>	<i>[Signature]</i>	<i>12/11/2009</i>	1 of 1
Document no.	Rev.	Date	SE/CAD	SEE/D	DY.CEE/D&D	Date

File name: C:\Documents and Settings\user\My Documents\mkta_123.114\EDML\EDML-111_RL.doc
Date: 12/11/2009

R.C.F.



13	12	11	10	9	8	7	6	5	4	3	2	1	
AUTHORITY DIC NO. ED090012		ALTERATIONS 1. DETAIL DRAWING FOR ITEM-1 CHANGED FROM CAT. NO. 282-124 TO CAT. NO. 282-122. 2. DETAIL DRAWING FOR ITEM-3 CHANGED FROM CAT. NO. 282-312 TO CAT. NO. 282-311. 3. REMARKS OF ITEM-1 TO 5 UPDATED.		A/C DATE 11/12/2008		ZONE F-9		F-9		F-12			

10	PLAIN WASHER 5.5, S&M/D	2	IS: 2018-67 T-3, IV-B	NIL	NIL
9	SPRING WASHER M5, S&M/D	2	IS: 3063-94 TYPE-B	NIL	NIL
8	CHEESE HEAD SCREW M6X12, S&M/D	2	IS: 1366-82 4.8, I-1	NIL	NIL
7	MOUNTING PLATE FOR CAGE CLAMP TERMINALS	1	DC72071	NIL	NIL
6	GLASS FUSES 5A020MM, 1A	8	IEE- 127-74	NIL	NIL
5	STEEL CARRIER RAIL 35X7.5MM, SLOTTED (L=150MM)	1	CAT. NO. 210-112	NIL	OF MS WGD OR FEDRUX WRE
4	SCREW LESS END STOP FOR DIN 35 RAIL	2	CAT. NO. 249-117	NIL	OF MS WGD OR FEDRUX WRE
3	END AND INTERMEDIATE PLATE	1	CAT. NO. 282-311	NIL	OF MS WGD OR FEDRUX WRE
2	ADJUNCT JUMPER, INSULATED	4	CAT. NO. 282-402	NIL	OF MS WGD OR FEDRUX WRE
1	FUSE TERMINAL BLOCK WITH OUT INDICATOR	8	CAT. NO. 282-122	NIL	OF MS WGD OR FEDRUX WRE

WELD LENGTH	NIL
WEIGHT	NIL
S. AREA	NIL
LENGTH / DIA	NIL
HEIGHT	NIL

GROUP	ELECTRICAL
DETAIL Dwg	CC72069
SCALE	AS SHOWN
DATE	12/01/08

SET OF CAGE CLAMP TERMINALS
FOR COMPARTMENT
FOR HYBRID NON-AC COACHES

RAIL COACH FACTORY, KAPURTHALA

PL NO. NIL
DRG. NO. CC72069

DATE OF FIRST ISSUE 18/08/2008

DATE OF ISSUE 18/08/2008

DATE OF FIRST ISSUE 18/08/2008

DATE OF FIRST ISSUE 18/08/2008

DATE OF FIRST ISSUE 18/08/2008

DATE OF FIRST ISSUE 18/08/2008

DATE OF FIRST ISSUE 18/08/2008

DATE OF FIRST ISSUE 18/08/2008

DATE OF FIRST ISSUE 18/08/2008

DATE OF FIRST ISSUE 18/08/2008

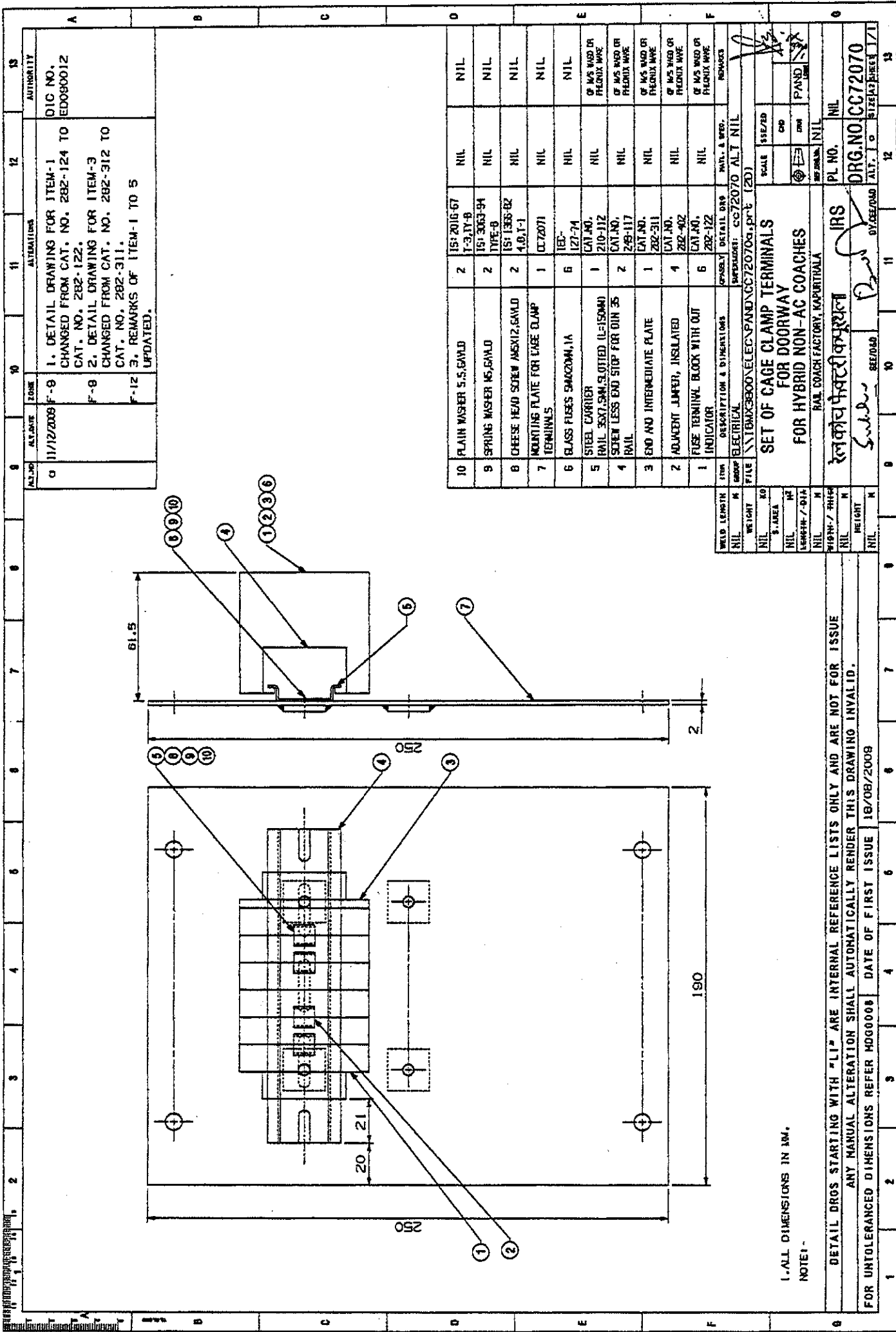
1. ALL DIMENSIONS IN MM.

NOTE:-

DETAIL DRGS STARTING WITH "LI" ARE INTERNAL REFERENCE LISTS ONLY AND ARE NOT FOR ISSUE

ANY MANUAL ALTERATION SHALL AUTOMATICALLY RENDER THIS DRAWING INVALID.

FOR UNTOLERANCED DIMENSIONS REFER MDG0008 DATE OF FIRST ISSUE 18/08/2008



ITEM NO.	DESCRIPTION	QTY	UNIT	REMARKS
10	PLAIN WASHER 5.5, 6AWD	2	IS: 2016-67 T-3.1Y-B	NIL
9	SPRING WASHER 16, 6AWD	2	IS: 3063-94 TYPE-B	NIL
8	CHEESE HEAD SCREW M8X12, 6AWD	2	IS: 1368-82 4.8, 1-1	NIL
7	MOUNTING PLATE FOR CAGE CLAMP TERMINALS	1	DL72071	NIL
6	GLASS FUSES 50A020M, 1A	6	IS: 127-74	NIL
5	STEEL CARRIER RAIL 35X7.5MM 3 OTTED (L=150MM)	1	CAT. NO. 210-112	NIL
4	SCREW LESS END STOP FOR DIN 35 RAIL	2	CAT. NO. 249-117	NIL
3	END AND INTERMEDIATE PLATE	1	CAT. NO. 282-311	NIL
2	ADJACENT JUMPER, INSULATED	4	CAT. NO. 282-402	NIL
1	FUSE TERMINAL BLOCK WITH OUT INDICATOR	6	CAT. NO. 282-122	NIL

WELD LENGTH	NIL
WEIGHT	NIL
S. AREA	NIL
LENGTH / DIA	NIL
HEIGHT	NIL

GROUP ELECTRICAL
 FILE \SYSTEM\3800\VELEC\PAND\CC72070.dwg (2D)
 SUPERSEDES: CC72070, ALT. NIL
 SCALE 1:1
 SHEET NO. 1 OF 1
 PAND

SET OF CAGE CLAMP TERMINALS FOR DOORWAY FOR HYBRID NON-AC COACHES
 RAIL COACH FACTORY, VARANASI
 DRG. NO. CC72070

DATE OF FIRST ISSUE 18/08/2008
 DATE OF ISSUE 18/08/2008

PL. NO. NIL
 DRG. NO. CC72070

BY: [Signature]
 CHECKED BY: [Signature]

1. ALL DIMENSIONS IN MM.
 NOTE: -

DETAIL DRS STARTING WITH "LI" ARE INTERNAL REFERENCE LISTS ONLY AND ARE NOT FOR ISSUE
 ANY MANUAL ALTERATION SHALL AUTOMATICALLY RENDER THIS DRAWING INVALID.

FOR UNTOLERANCED DIMENSIONS REFER HDG0008

13
12
11
10
9
8
7
6
5
4
3
2
1

