

**SWITCH PLATE ASSEMBLIES FOR MG/DEMU DPC & TC TYPE COACHES FOR
SENEGAL MALI**

Sno.	Description	Cat. No.	QPA	Marking	Remarks
1.	Switch plate assembly complete with polycarbonate cover frame and powder coated steel plate with 2nos. 'ON-OFF' switches & 1no. 5-Pin socket 6A, 250VAC.	NV300219 of M/s SSK or equivalent RCF approved make	01	F, CS110VAC	Drg. No. FE74401 Item-1
2.	Switch plate assembly complete with polycarbonate cover frame and powder coated steel plate with 1no. 'ON-OFF' switch 6A, 250VAC.	RN0016 of M/s SSK or equivalent RCF approved make	01	F	Drg. No. FE74401 Item-2
3.	Switch plate assembly complete with polycarbonate cover frame and powder coated steel plate with 1no. 'ON-OFF' switch & 1no. 5-Pin socket 6A, 250VAC.	RN0020 of M/s SSK or equivalent RCF approved make	01	CS110VAC	Drg. No. FE74401 Item-3

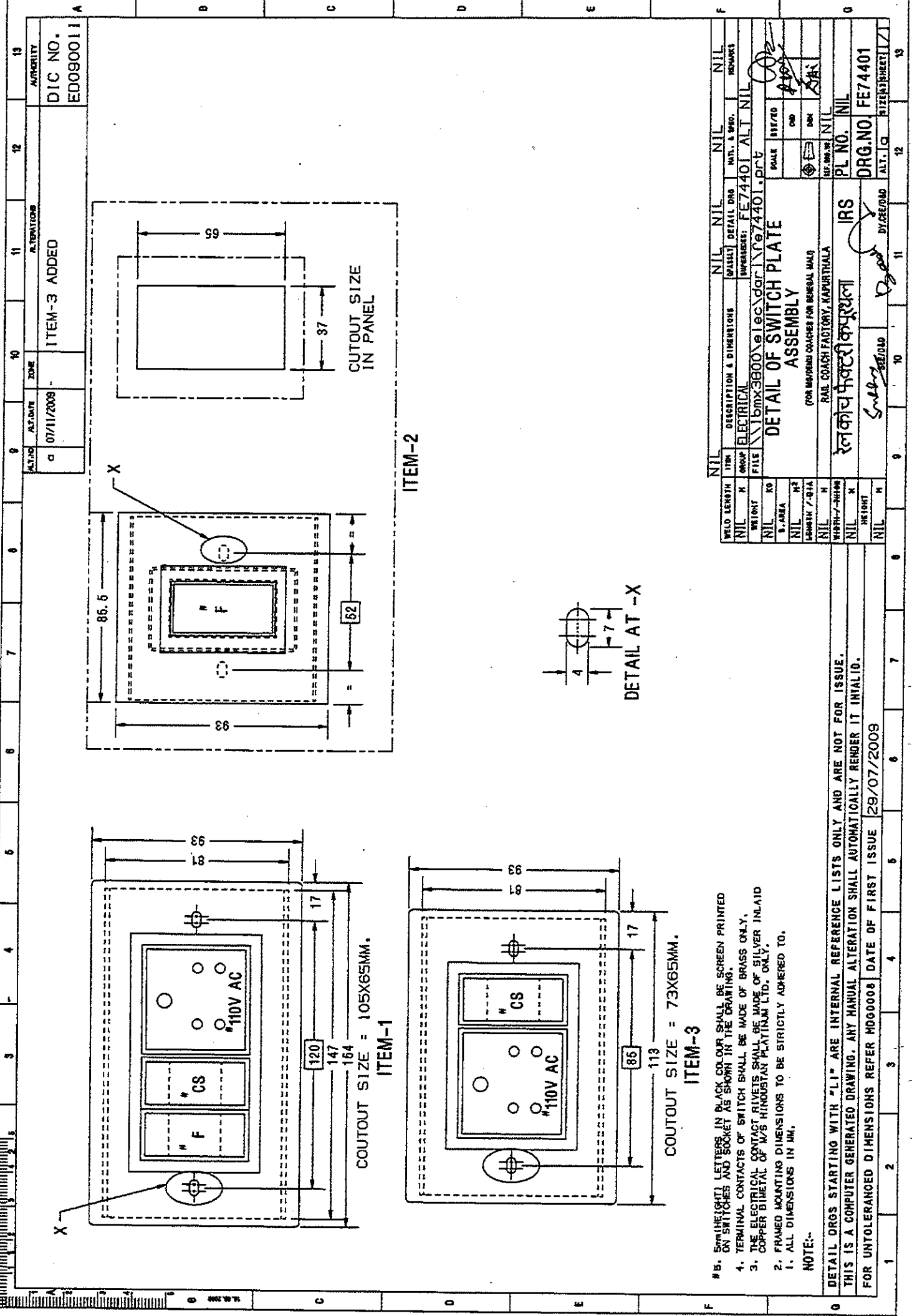
1. Firm shall supply the Switch Plate assembly complete as per relevant drawings in pre assembled condition in place of the supplying the material loose.
2. The loop wire of size 1.5 Sqmm shall be E-beam cable as per spec. EDTS132, Rev-C, AM1 Data sheet-2 between Switch & Socket.
3. The packing conditions shall be as follows:

Stage-1: Standard packing of Switch Plate assembly shall be made as per packing conditions to document PI042.

Stage-2: Packing per coach set shall be as per conditions document no. P1021. The packing shall be legibly marked for the type of coach applicable for.

Stage-3: Bulk packing of the material shall be as per packing conditions to document no. PI032. Each packing shall be legibly marked for the type of coach applicable for.

EDML105	0	10.11.09					
Doc. No.	Rev	Date	SE/CAD	SSE/CAD	SEE/D	DYCEE/D&D	Pg 1 of 1



ITEM-2

ITEM-1

ITEM-3

- # 5. SCREEN HEIGHT LETTERS IN BLACK COLOUR SHALL BE SCREEN PRINTED ON SWITCHES AND SOCKET AS SHOWN IN THE DRAWING.
4. TERMINAL CONTACTS OF SWITCH SHALL BE MADE OF BRASS ONLY.
3. THE ELECTRICAL CONTACT RIVETS SHALL BE MADE OF SILVER INLAID COPPER BIMETAL OF M/S HINDUSTAN PLASTIKUM LTD. ONLY.
2. FRAMED MOUNTING DIMENSIONS TO BE STRICTLY ADHERED TO.
1. ALL DIMENSIONS IN MM.

NOTE:-
 # 5. DETAIL DRGS STARTING WITH "LI" ARE INTERNAL REFERENCE LISTS ONLY AND ARE NOT FOR ISSUE.
 THIS IS A COMPUTER GENERATED DRAWING. ANY MANUAL ALTERATION SHALL AUTOMATICALLY RENDER IT INVALID.
 FOR UNTOLERANCED DIMENSIONS REFER MDC00008 DATE OF FIRST ISSUE 29/07/2009

WELD LENGTH	NIL	DESCRIPTION & DIMENSIONS	NIL	DETAIL DRG	NIL	INT. & SPD.	NIL	REMARKS
WGT	NIL	GROUP	ELECTRICAL	REVISED	FE74401	ALT	NIL	
FILE	NIL	FILE	10m3800\elec\dr\1074401.drv					
WGT	NIL	SCALE	DETAIL OF SWITCH PLATE ASSEMBLY					
S. AREA	NIL	FOR MOUNTING COACHES FOR BOMBAY MAIL						
WGT	NIL	RAIL COACH FACTORY, KAPURTHALA						
WGT	NIL	रेल कोच फ़ैक्टरी कपूरथला						
WGT	NIL	DRG. NO.	FE74401					
WGT	NIL	ALT. LG	FE74401					

ALTERNATIONS
 ITEM-3 ADDED
 DIC NO. ED090011A

DATE: 07/11/2009