


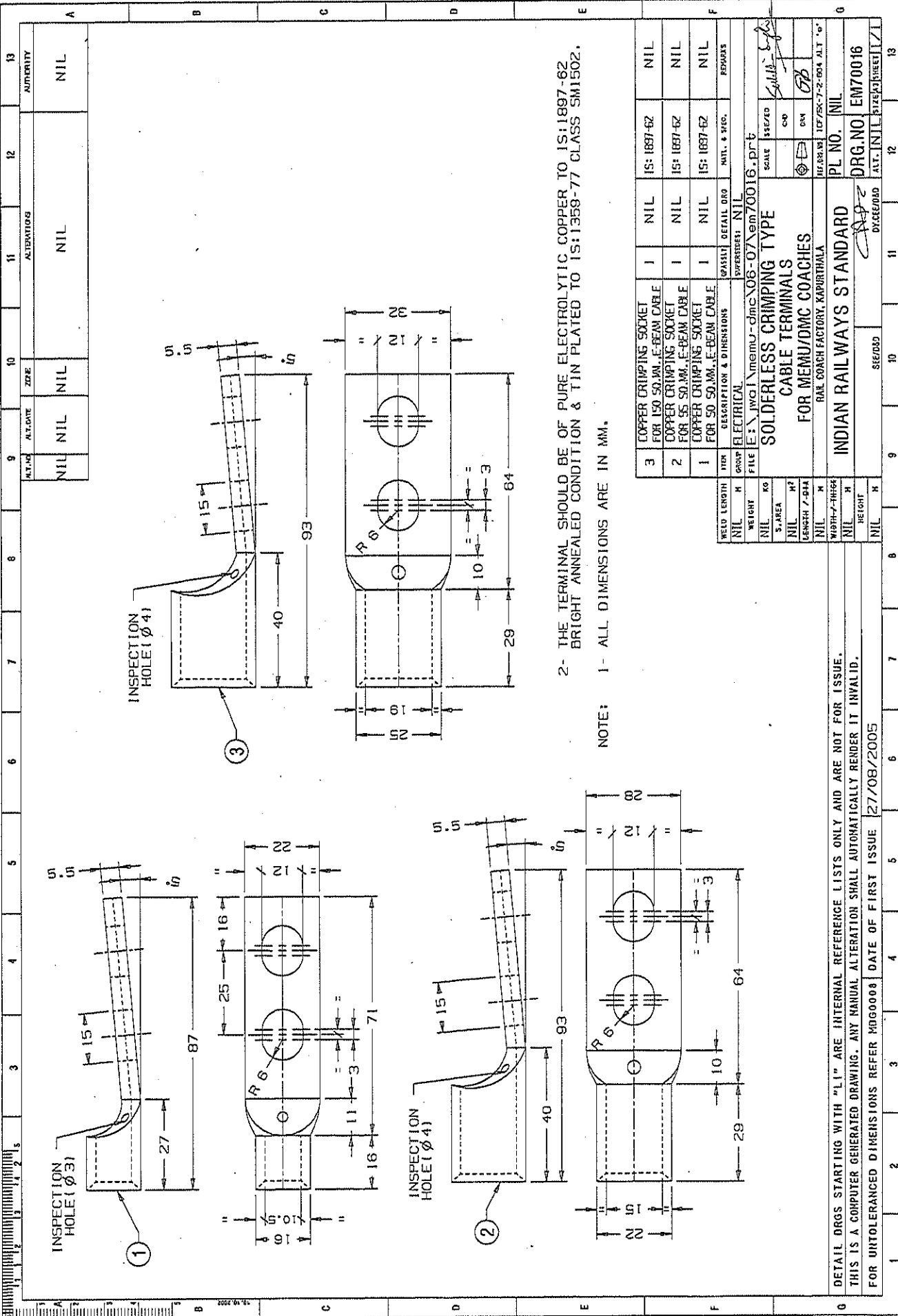


LIST OF COPPER CRIMPING SOCKET FOR MEMU/DMC COACHES.

Sl. No.	Description	DRG./SPEC. No.	QPC	REMARK
1.	COPPER CRIMPING SOCKET FOR 150 MM ² CABLE	EM70016, ITEM-3	36	
2.	COPPER CRIMPING SOCKET FOR 150 MM ² CABLE	EDTS200, ITEM-2	164	
3.	COPPER CRIMPING SOCKET FOR 150 MM ² CABLE	EDTS200, ITEM-1	8	
4.	COPPER CRIMPING SOCKET FOR 95 MM ² CABLE	EDTS200, ITEM-4	40	
5.	COPPER CRIMPING SOCKET FOR 95 MM ² CABLE	EDTS200 ITEM-5	4	
6.	COPPER CRIMPING SOCKET FOR 95 MM ² CABLE	EDTS200 ITEM-6	4	WITH 90° BEND
7.	COPPER CRIMPING SOCKET FOR 50 MM ² CABLE	EM70016, ITEM-1	4	
8.	COPPER CRIMPING SOCKET FOR 50 MM ² CABLE	EDTS200, ITEM-9	72	
9.	COPPER CRIMPING SOCKET FOR 50 MM ² CABLE	EDTS200, ITEM-11	6	
10.	COPPER CRIMPING SOCKET FOR 25 MM ² CABLE	EDTS200, ITEM-14	18	
11.	COPPER CRIMPING SOCKET FOR 16 MM ² CABLE	EDTS200, ITEM-15	2	
12.	COPPER CRIMPING SOCKET FOR 16 MM ² CABLE	EDTS200, ITEM-16	2	
13.	COPPER CRIMPING SOCKET FOR 6 MM ² CABLE	EDTS201, ITEM-3	8	
14.	COPPER CRIMPING SOCKET FOR 6 MM ² CABLE	EDTS201, ITEM-5	6	
15.	COPPER CRIMPING SOCKET FOR 2.5 MM ² CABLE	EDTS201, ITEM-10	290	

EDML099	A	04/10/2013				1 of 1
Doc. No.	Rev.	Date	SSE/CAD	AEE/D	Dy.CEE/D&D	Page



2- THE TERMINAL SHOULD BE OF PURE ELECTROLYTIC COPPER TO IS:1897-62 BRIGHT ANNEALED CONDITION & TIN PLATED TO IS:1358-77 CLASS SM1502.

NOTE: 1- ALL DIMENSIONS ARE IN MM.

WELD LENGTH	NIL	H	CRIMP	ELECTRICAL	DESCRIPTION & DIMENSIONS	DETAIL DRG	NATL. & REG.	REMARKS
WEIGHT	NIL	KG						
S-AREA	NIL	MM ²						
LENGTH / DIA	NIL	MM						
WIDTH / THICK	NIL	MM						
HEIGHT	NIL	MM						

FILE	E:\jwgl\memu-dmc\06-07\em70016.prt		SCALE	IS/ED	DATE
ITEM	3	COPPER CRIMPING SOCKET FOR 150 SQ.MM. E-BEAM CABLE	1	NIL	IS: 1897-62
ITEM	2	COPPER CRIMPING SOCKET FOR 50 SQ.MM. E-BEAM CABLE	1	NIL	IS: 1897-62
ITEM	1	COPPER CRIMPING SOCKET FOR 50 SQ.MM. E-BEAM CABLE	1	NIL	IS: 1897-62
WASHTY	SUPERSEDES: NIL				
PL NO.	NIL				
DRG. NO.	EM70016				
PL NO.	NIL				
DRG. NO.	EM70016				
PL NO.	NIL				
DRG. NO.	EM70016				

DETAIL DRGS STARTING WITH "L" ARE INTERNAL REFERENCE LISTS ONLY AND ARE NOT FOR ISSUE. THIS IS A COMPUTER GENERATED DRAWING. ANY MANUAL ALTERATION SHALL AUTOMATICALLY RENDER IT INVALID. FOR UNTOLERANCED DIMENSIONS REFER MDG0008 | DATE OF FIRST ISSUE 27/08/2005