

**Set of Modular switches for conventional Non-AC coaches****Table-1****Set of Modular switches for conventional GS coach**

Switch plate assembly for control of mobile charging socket only in conventional GS coach.

ITEM.NO	Description	Drg./ spec. no.	Qty.	OGA drawing no.
1.	Switch plate assembly complete with polycarbonate cover frame and powder coated steel plate with 2 nos. ON-OFF switches 6A,240V AC	CC74243, Alt-'c' Item-2	9 Nos.	With OGA, mounting dimensions, orientation and marking as drawing no. CC74243
2.	Switch plate assembly complete with polycarbonate cover frame and powder coated steel plate with 1 no. ON-OFF switch 6A,240V AC	CC74243, Alt-'c' Item-1	9 Nos.	With OGA, mounting dimensions, orientation and marking as drawing no. CC74243
3.	Switch plate assembly complete with polycarbonate cover frame and powder coated steel plate with 2 no. ON-OFF switch & 2no. 3-pin socket & 2nos.(0.5A) glass fuses of M/s Ferraz Shawmut / Cooper Bussman/ equivalent*(with fuse holders)	CC74243, Alt-'c' Item-5	2 Nos.	With OGA, mounting dimensions, orientation and marking as drawing no. CC74243
4.	Switch plate assembly complete with polycarbonate cover frame and powder coated steel plate with 1 no. ON-OFF switch & 1no. 5-pin socket with 2nos.(0.5A) glass fuses of M/s Ferraz Shawmut/Cooper Bussman/ equivalent*(with fuse holders) and 4-conductor terminal block*.	CC74243, Alt-'c' Item-6	18 Nos.	With OGA, mounting dimensions, orientation and marking as drawing no. CC74243

\*Equivalent with the approval from the office of CEE/RCF.

**Table-2****Set of Modular switches for conventional SCN (84-Berther) coach**

Switch plate assembly for control of lights &amp; fans only in conventional SCN (84-berther) coach.

ITEM.NO	Description	Drg./ spec. no.	Qty.	Marking
1.	Switch plate assembly complete with polycarbonate cover frame and powder coated steel plate with 3 nos. ON-OFF switches, 6A, 240V AC	CC74243, Alt-'c' Item-3	18 Nos.	With OGA, mounting dimensions, orientation and marking as drawing no. CC74243
2.	Switch plate assembly complete with polycarbonate cover frame and powder coated steel plate with 4 nos. ON-OFF switches, 6A, 240V AC	CC74243, Alt-'c' Item-4	1 No..	With OGA, mounting dimensions, orientation and marking as drawing no. CC74243

EDML-095	5	08.08.2016	<i>[Signature]</i>	-	<i>[Signature]</i>	1 of 2
Document no.	Rev.	Date	SSE/CAD	SEE/D	DY.CEE/D&D	Page no.

**Table-3**  
**Set of Modular switches for conventional DSLR coach**

Modular type switches for control of mobile charging socket only in conventional DSLR coach.

ITEM.NO	Description	Drg./ spec. no.	Qty.	Marking
1.	Switch plate assembly complete with polycarbonate cover frame and powder coated steel plate with 2 nos. ON-OFF switches, 6A, 240V AC.	CC74243, Alt-'c' Item-2	3 Nos.	With OGA, mounting dimensions, orientation and marking as drawing no. CC74243
2.	Switch plate assembly complete with polycarbonate cover frame and powder coated steel plate with 1 no. ON-OFF switch & 1no. 5-pin socket with 2nos.(0.5A) glass fuses of M/s Ferraz Shawmut/Cooper Bussman/equivalent*(with fuse holders)with holders and 4-conductor terminal block*.	CC74243, Alt-'c' Item-6	8 Nos.	With OGA, mounting dimensions, orientation and marking as drawing no. CC74243

\*Equivalent with the approval from the office of CEE/RCF.

N.B. : Marking shall be as indicated and switches/socket shall be vertically arranged as shown in Marking and Orientation column above.

Packing conditions of switch plates shall be as follows:

- Stage 1: Standard packing of switch plates mentioned above as per packing conditions document no. PI042.
- Stage 2: Packing per coach set as per packing conditions document no. PI021. Each packing shall be legibly marked for the type of coach applicable for.
- Stage 3: Bulk packing coach wise as per packing conditions document no. PI032. Each packing shall be legibly marked for the type of coach/coaches applicable for.

- N.B. : i) Firm shall get approved prototype sample from CEE/RCF before commencing Bulk supply.
- ii) Switch shall confirm to IS:3854-1997 & socket shall confirm to IS:1293-2005 and both shall be ISI marked.
- iii) Red color LED indication shall be provided in charging socket switch.
- iv) For Conventional GS & DSLR coaches:- 0.5A fuse in +ve wire & 0.5A fuse in -ve wire.

EDML-095	5	08.08.2016	<i>Handwritten Signature</i>	-	<i>Handwritten Signature</i>	2 of 2
Document no.	Rev.	Date	SSE/CAD	SEE/D	DY.CEE/D&D	Page no.

1. ITEM-6 ADDED FOR MOBILE CHARGING SOCKET.  
 2. NOTE NO.7,8,9 & 10 ADDED AND DRAWINGS MODIFIED ACCORDINGLY.

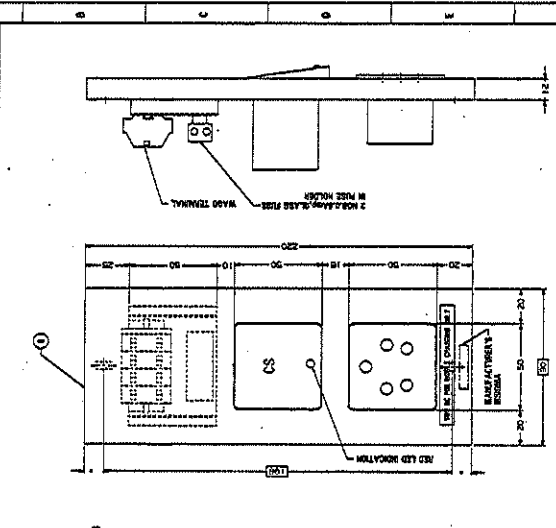
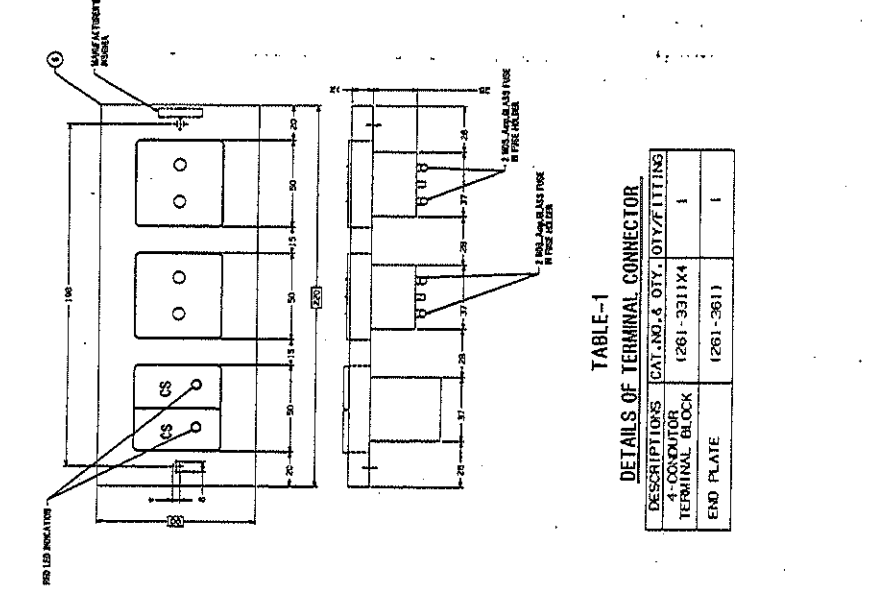


TABLE-1  
 DETAILS OF TERMINAL CONNECTOR

DESCRIPTIONS	CAT. NO.	QTY.	DIY/FITTING
4-CONDUCTOR TERMINAL BLOCK	(261-311)X4	1	
END PLATE	(261-361)	1	



10. TERMINAL CONNECTOR SHALL BE PROVIDED CASE CLAMP TYPE OF M/S WAGO MAKE OR EQUIVALENT WITH THE APPROVAL FROM OFFICE OF CEE/CFE.
9. FUSE HOLDER WITH GLASS FUSE (0.5amp) TO BE PROVIDED FOR (+VE) AND (-VE) SIDE TERMINAL IN CHARGING SOCKET PROVIDED IN ITEM NO.6
8. ALL SWITCH AND SOCKET SHALL BE "ISI" MARKED.
7. RED LED INDICATION TO BE PROVIDED IN CHARGING SOCKET SWITCH.
6. GLASS FUSE (0.5amp) FOR (+VE) AND (-VE) SIDE TERMINAL IN CHARGING SOCKET PROVIDED IN ITEM NO.5
5. MANUFACTURER INSURANCE IDENTIFICATION MARK TO BE EMBOSSED AT LOCATION INDICATED.
4. CUT-OUT SIZE PROVIDED IN SIDE WALL PANEL BACK PIECE FOR ITEM-3 & 4 IS 55MM(H)X123MM(W). IT SHALL BE ENSURED THAT SWITCH CUT-OUT SIZE PROVIDED IN CUT-OUT PROVIDED, PANEL SIDE WALL PROVIDED, BACK PIECE FOR ITEM-1 & 2, IS 55MM(H)X83MM(W). IT SHALL BE ENSURED THAT SWITCH PLATE CAN BE ACCURATELY FITTED TO BE STRICTLY ADHERED TO.
1. ALL DIMENSIONS IN MM.

NOTE: 1. ALL DIMENSIONS IN MM.

ANY MANUAL ALTERATION SHALL AUTOMATICALLY RENDER THIS DRAWING INVALID.  
 FOR UNTOLERANGED DIMENSIONS REFER WD00000

DETAIL DROS STARTING WITH "U" ARE INTERNAL REFERENCE LISTS ONLY AND ARE NOT FOR ISSUE.  
 DATE OF FIRST ISSUE 14/06/2009

ITEM NO.	DESCRIPTION	QTY.	UNIT	REMARKS
6	SWITCH PLATE ASSEMBLY TO DOCUMENT NO.EDM-095 REV-04 FOR CONVENTIONAL NON-AC COACHES	1	NIL	NIL
5	SWITCH PLATE ASSEMBLY TO DOCUMENT NO.EDM-095 REV-04 FOR CONVENTIONAL NON-AC COACHES	1	NIL	NIL
4	SWITCH PLATE ASSEMBLY TO DOCUMENT NO.EDM-095 REV-04 FOR CONVENTIONAL NON-AC COACHES	1	NIL	NIL
3	SWITCH PLATE ASSEMBLY TO DOCUMENT NO.EDM-095 REV-04 FOR CONVENTIONAL NON-AC COACHES	1	NIL	NIL
2	SWITCH PLATE ASSEMBLY TO DOCUMENT NO.EDM-095 REV-04 FOR CONVENTIONAL NON-AC COACHES	1	NIL	NIL
1	SWITCH PLATE ASSEMBLY TO DOCUMENT NO.EDM-095 REV-04 FOR CONVENTIONAL NON-AC COACHES	1	NIL	NIL

PL NO. NIL  
 DRG. NO. CC74243  
 DATE: 14/06/2009