

RAIL COACH FACTORY, KAPURTHALA

Document no. EDML065, Rev. 'A'

Toggle Switch Assembly Alongwith Mobile Charging Socket For Non-AC Coaches

TABLE-1 for SCN coach

Item. No.	Description	Drawing No.	Qty Per coach set
1.	Toggle switch assembly (Quadruple) with mobile charging socket (for both compartment & corridor side)	CC74009 alt. 'a'	18

TABLE-2 for DSLR coach

Item. No.	Description	Drawing No.	Qty Per coach set
1.	Toggle switch assembly (Tripple) with mobile charging socket (for both disabled person compartment & general passenger compartment)	CC74008 alt. 'a'	03
2.	Toggle switch assembly (single) with mobile charging socket (for guard compartment)	CC74007 alt. 'a'	01


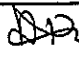
Notes:-

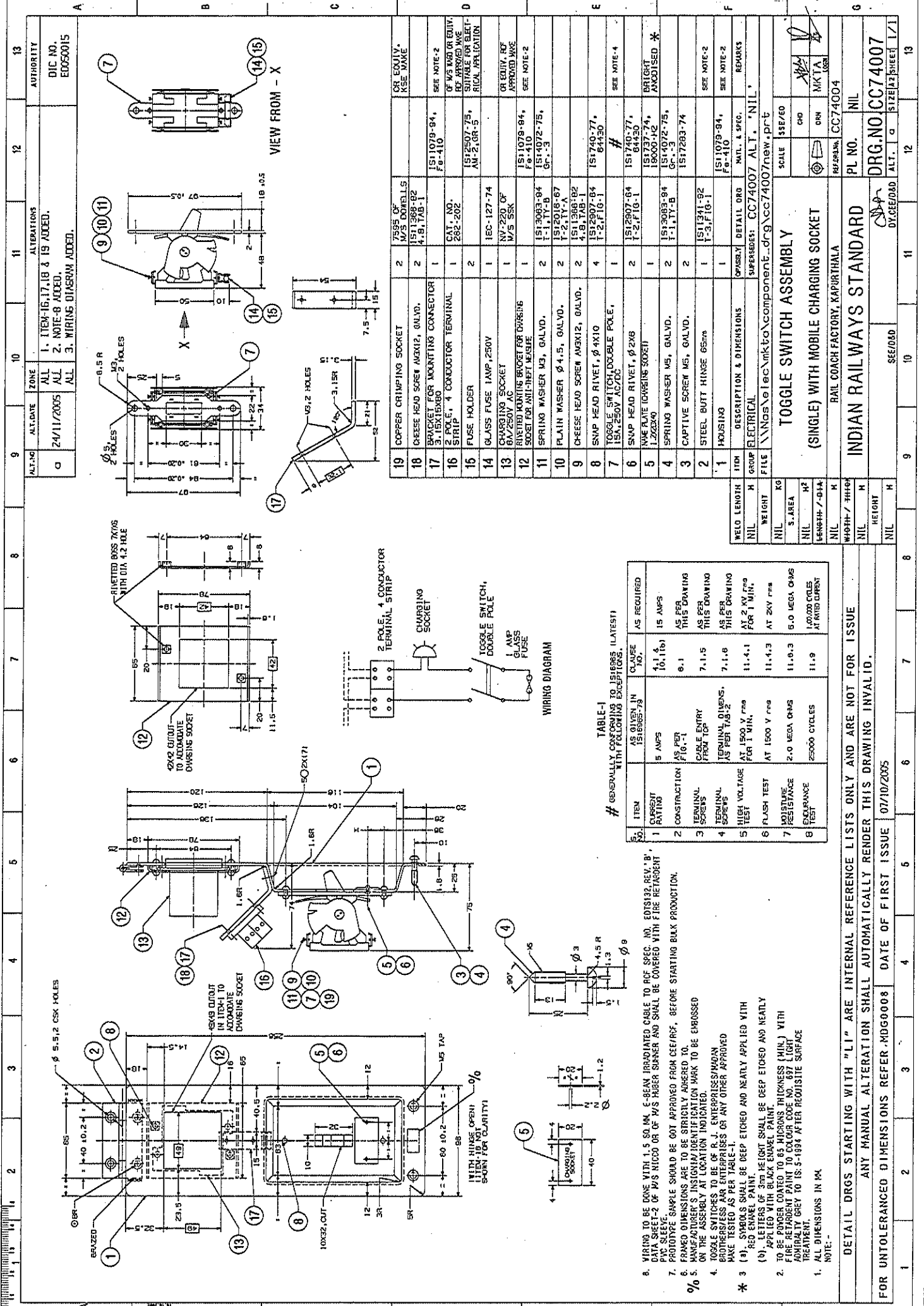
1. Firm shall supply the toggle switch plate assembly alongwith mobile charging socket in pre-assembled condition in-place of supplying the material loose .
2. The loop wire of size 1.5 Sqmm copper cable between switch & socket shall be provided.
3. Material shall be supplied in coach sets i.e one box shall contains complete toggle switch assembly alongwith charging socket as per item-1 of table-1 for SCN Coaches and item-1&2 of table-2 for DSLR coaches of the document.
4. The packing conditions of the switches shall be as follows :

Stage-1 : Standard packing of toggle switch assembly alongwith mobile charging socket shall be made as per packing conditions document no. PI042.

Stage-2: Packing per coach set shall be as per packing conditions document no. PI021. The packing shall be legibly marked for the type of coach applicable for.

Stage -3: Bulk packing of the material shall be as per packing conditions document no. PI032. The packing shall be legibly marked for the type of coach.

EDML-065	A	24.11.05			1 of 1
Document no.	Rev.	Date	Unit Supervisor	DY.CEE/D&D	Sheet



11 ALTERATIONS
 1. ITEM-16,17,18 & 19 ADDED.
 2. NOTE-8 ADDED.
 3. WIRING DIAGRAM ADDED.

12 AUTHORITY
 DIC NO.
 EDC50015

13

14

15

16

17

18

19

20

21

22

23

24

25

26

27

28

29

30

31

32

33

34

35

36

37

38

39

40

41

42

43

44

45

46

47

48

49

50

51

52

53

54

55

56

57

58

59

60

61

62

63

64

65

66

67

68

69

70

71

72

73

74

75

76

77

78

79

80

81

82

83

84

85

86

87

88

89

90

91

92

93

94

95

96

97

98

99

100

101

102

103

104

105

106

107

108

109

110

111

112

113

114

115

116

117

118

119

120

121

122

123

124

125

126

127

128

129

130

131

132

133

134

135

136

137

138

139

140

141

142

143

144

145

146

147

148

149

150

151

152

153

154

155

156

157

158

159

160

161

162

163

164

165

166

167

168

169

170

171

172

173

174

175

176

177

178

179

180

181

182

183

184

185

186

187

188

189

190

191

192

193

194

195

196

197

198

199

200

201

202

203

204

205

206

207

208

209

210

211

212

213

214

215

216

217

218

219

220

221

222

223

224

225

226

227

228

229

230

231

232

233

234

235

236

237

238

239

240

241

242

243

244

245

246

247

248

249

250

251

252

253

254

255

256

257

258

259

260

261

262

263

264

265

266

267

268

269

270

271

272

273

274

275

276

277

278

279

280

281

282

283

284

285

286

287

288

289

290

291

292

293

294

295

296

297

298

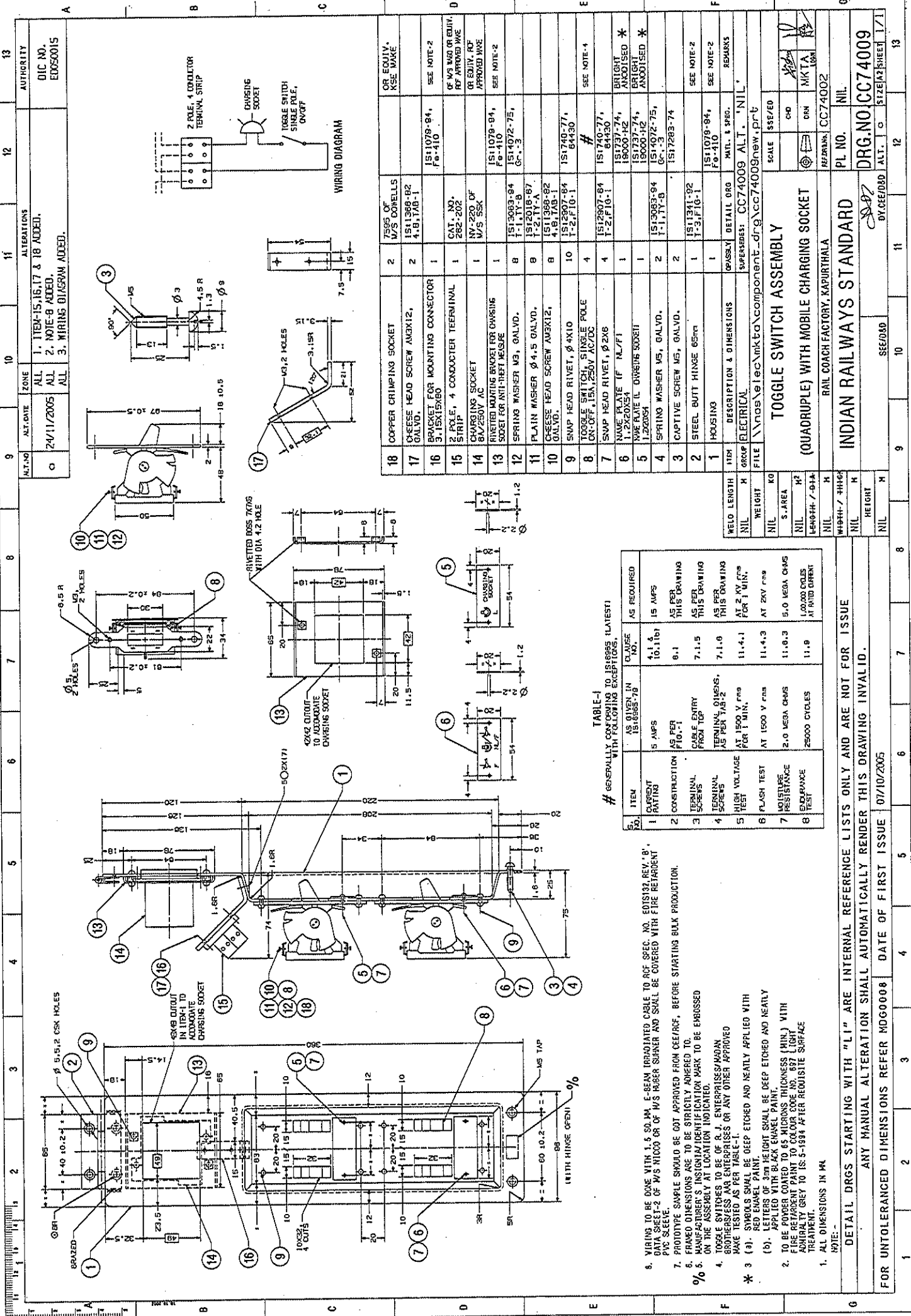
299

300

301

302

303



1	2	3	4	5	6	7	8	9	10	11	12	13
ALT. NO.	ALT. DATE	ZONE	ALTERATIONS	1. ITEM-15,16,17 & 18 ADDED.	2. NOTE-9 ADDED.	3. WIRING DIAGRAM ADDED.						
0	24/11/2005	ALL										
AUTHORITY DIC NO. EDMS0015												

18	COPPER CRIMPING SOCKET	2	TYPE OF M/S DOWNELLS		OR EQUIV. USE MAKE
17	CHEESE HEAD SCREW AMX12, GALV.D.	2	1511369-02 4-151170-1		
16	BRACKET FOR MOUNTING CONNECTOR	1	CAT. NO. 262-202		SEE NOTE-2
15	3 P.C.L.E., 4 CONDUCTOR TERMINAL STRIP	1	NY-220 OF M/S SSK		OF M/S WAGO OR EQUIV. FOR APPROVED WIRE
14	CHARGING SOCKET	1	NY-220 OF M/S SSK		OF EQUIV. FOR APPROVED WIRE
13	RIVETED MOUNTING BRACKET FOR CHARGING SOCKET FOR ANTI-THEFT MEASURE	1	1513083-94 F8-410		SEE NOTE-2
12	SPRING WASHER M3, GALV.D.	8	1513083-94 F8-410		
11	PLAIN WASHER Ø 4.5, GALV.D.	8	1512016-87 F8-410		
10	CHEESE HEAD SCREW AMX12, GALV.D.	8	151170-1		
9	SNAP HEAD RIVET, Ø 4X10	10	1512307-64 F8-410		
8	TOGGLE SWITCH, SINGLE POLE ON-OFF, 15A, 250V AC/DC	4	151740-77, 84430		SEE NOTE-4
7	SNAP HEAD RIVET, Ø 2X6	4	1512907-64 F8-410		
6	NAME PLATE (F.N.L/FI)	1	1512907-64 F8-410		BRIGHT ANODISED *
5	WIRE PLATE (L. Ø 26X16) SOCKET	1	1512907-64 F8-410		BRIGHT ANODISED *
4	SPRING WASHER M5, GALV.D.	2	1513083-94 F8-410		
3	CAPTIVE SCREW M5, GALV.D.	2	1512907-64 F8-410		
2	STEEL BUTT HINGE 65mm	1	1511341-92 F8-410		SEE NOTE-2
1	HOUSING	1	1511079-94, F8-110		SEE NOTE-2
WELD LENGTH H GRIP ELECTRICAL					
FILE \nos\elec\nikta\component_drg\cc74009new.pr't					
SUPERSEDES: CC74009 ALT. 'NIL'					
TOGGLE SWITCH ASSEMBLY (QUADRUPLER) WITH MOBILE CHARGING SOCKET					
RAIL COACH FACTORY, KAPURTHALA					
PL NO. NIL					
DRG. NO. CC74009					
BY: CCE/080					
DATE: 07/10/2005					
SCALE: AS SHOWN					
CHK: MKTA					
DWN: MKTA					
REVISION: CC74002					

18	17	16	15	14	13	12	11	10	9	8	7	6	5	4	3	2	1
WGT	WGT	WGT	WGT	WGT	WGT	WGT	WGT	WGT	WGT	WGT	WGT	WGT	WGT	WGT	WGT	WGT	WGT
NIL	NIL	NIL	NIL	NIL	NIL	NIL	NIL	NIL	NIL	NIL	NIL	NIL	NIL	NIL	NIL	NIL	NIL
DETAIL DRGS STARTING WITH "LI" ARE INTERNAL REFERENCE LISTS ONLY AND ARE NOT FOR ISSUE																	
ANY MANUAL ALTERATION SHALL AUTOMATICALLY RENDER THIS DRAWING INVALID.																	
FOR UNTOLERANCED DIMENSIONS REFER MDG0008 DATE OF FIRST ISSUE 07/10/2005																	

TABLE-I
GENERALLY CONFORMING TO IS 1855 (LATEST) WITH FOLLOWING MODIFICATIONS.

- WIRING TO BE DONE WITH 1.5 SQ.MM. E-BEAN IRADIATED CABLE TO DCE SPEC. NO. E015133 REV. 'B'. DATA SHEET-2 OF M/S RICOO OR OF M/S WAGER SUPPLIER AND SHALL BE COVERED WITH FIRE RETARDANT PVC SHEET.
- PROVIDING SAMPLE SHOULD BE GOT APPROVED FROM CEE/RCE, BEFORE STARTING BULK PRODUCTION.
- ALL DIMENSIONS ARE TO BE STRICTLY ADHERED TO.
- MANUFACTURER'S IDENTIFICATION MARK TO BE EMBOSSED ON THE ASSEMBLY AT LOCATION INDICATED.
- TOGGLE SWITCHES TO BE OF R.J. ENTERPRISES/MAGAN ENTERPRISES AND ENTERPRISES OR ANY OTHER APPROVED MAKE TESTED AS PER TABLE-I.
- SYMBOLS SHALL BE DEEP ETCHED AND NEATLY APPLIED WITH RED ENAMEL PAINT. WEIGHT SHALL BE DEEP ETCHED AND NEARLY APPLIED WITH BLACK ENAMEL PAINT.
- TO BE POWDER COATED TO 45 MICRONS THICKNESS (MIN.) WITH FIRE RETARDANT PAINT TO COLOUR CODE NO. 637 (LIGHT TREATMENT). GREY TO IS: 5-1884 AFTER REQUISITE SURFACE TREATMENT.
- ALL DIMENSIONS IN MM.