

MATERIAL LIST OF SWITCH PLATE ASSEMBLY FOR MEMU COACHES

Item No.	Description	Drawing / Spec	QPC	
			DMC	TC
1	Switch plate assembly complete with polycarbonate cover frame & powder coated steel plate with 1-No. 'ON-OFF' switch 6A, 250V AC. & 1Amp. Glass fuse with fuse holder of M/s ferraz Shawmut/ Cooper Bussmann / RCF Approved make*	SKED-740, Alt-Nil, Item-1	-	6
2	Switch plate assembly complete with polycarbonate cover frame & powder coated steel plate with 2-No. 'ON-OFF' switch 6A, 250V AC. & 1Amp. Glass fuse with fuse holder of M/s ferraz Shawmut/ Cooper Bussmann / RCF Approved make*	SKED-740, Alt-Nil, Item-2	8	4
3.	Switch plate assembly complete with polycarbonate cover frame & powder coated steel plate with 3-No. 'ON-OFF' switch 6A, 250V AC. & 1Amp. Glass fuse with fuse holder of M/s ferraz Shawmut/ Cooper Bussmann / RCF Approved make*	SKED-740, Alt-Nil, Item-3	2	4
4.	Switch plate assembly complete with polycarbonate cover frame & powder coated steel plate with 2-Nos. 'ON-OFF' switch & 1No. 5-Pin Socket 6A, 250V AC with shutter & 1Amp. Glass fuse with fuse holder of M/s ferraz Shawmut/ Cooper Bussmann / RCF Approved make*	SKED-740, Alt-Nil, Item-4	2	6
5.	Switch plate assembly complete with polycarbonate cover frame & powder coated steel plate with 3-Nos. 'ON-OFF' switch & 1No. 5-Pin Socket 6A, 250V AC with shutter & 1Amp. Glass fuse with fuse holder of M/s Ferraz Shawmut/ Cooper Bussmann / RCF Approved make*	SKED-740, Alt-Nil, Item-5	2	-

* With prior Approval of CEE/RCF.

Packing conditions of switch Plates shall be as follows:

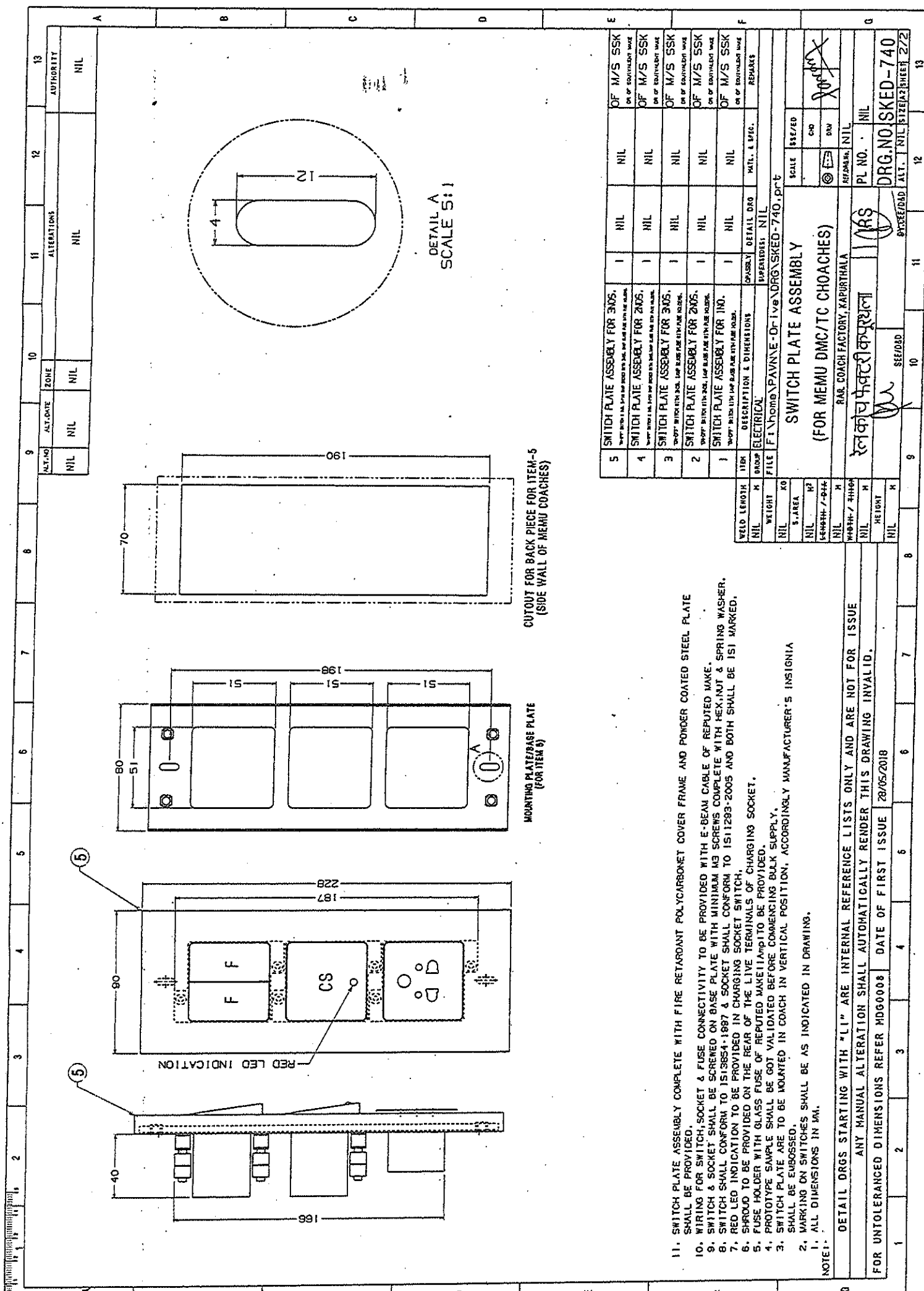
Stage 1: Standard packing of switch plates mentioned above shall be as per packing conditions of document no. PIO42

Stage 2: Packing per coach set shall be as per packing document no. PIO21. Each packing shall be legibly marked for the type of coach applicable for.

Stage 3: Bulk packing coach wise shall be as per packing condition of document no. PIO32. Packing shall be legibly marked for the type of coach/coaches.

- N.B.:
- i) firm shall have approval of prototype sample from CEE/RCF before commencing bulk Supply.
 - ii) All switches and socket shall be 'ISI' marked.
 - iii) Firm must provide red color LED indication on the switch of charging socket.
 - iv) Wire Terminals: - Glass Fuse (ferraz Shawmut/ Cooper busman/ RCF Approved make) to be connected in phase wire only.

EDML055	C	14.07.2018				1 of 1
SPEC. NO.	REVISION	DATE	SSE/CAD	SEE/D	DY.CEE/D&D	PAGE



DETAIL A
SCALE S:1

CUTOUT FOR BACK PIECE FOR ITEM-5
(SIDE WALL OF MEMU COACHES)

MOUNTING PLATE/BASE PLATE
(FOR ITEM 5)

11. SWITCH PLATE ASSEMBLY COMPLETE WITH FIRE RETARDANT POLYCARBONATE COVER FRAME AND POWDER COATED STEEL PLATE SHALL BE PROVIDED.
10. WIRING FOR SWITCH, SOCKET & FUSE CONNECTIVITY TO BE PROVIDED WITH E-BEAM CABLE OF REPUTED MAKE.
9. SWITCH & SOCKET SHALL BE SCREWED ON BASE PLATE WITH MINIMUM M3 SCREWS COMPLETE WITH HEX.NUT & SPRING WASHER.
8. SWITCH SHALL CONFORM TO IS13854-1997 & SOCKET SHALL CONFORM TO IS11293-2005 AND BOTH SHALL BE ISI MARKED.
7. RED LED INDICATION TO BE PROVIDED IN CHARGING SOCKET SWITCH.
6. SHROUD TO BE PROVIDED ON THE REAR OF THE LIVE TERMINALS OF CHARGING SOCKET.
5. FUSE HOLDER WITH GLASS FUSE OF REPUTED MAKE TO BE PROVIDED.
4. PROTOTYPE SAMPLE SHALL BE GOT VALIDATED BEFORE COMMENCING BULK SUPPLY.
3. SWITCH PLATE ARE TO BE MOUNTED IN COACH IN VERTICAL POSITION, ACCORDINGLY MANUFACTURER'S INSIGNIA SHALL BE EMBOSSED.
2. MARKING ON SWITCHES SHALL BE AS INDICATED IN DRAWING.
1. ALL DIMENSIONS IN MM.

DETAIL DRGS STARTING WITH "LI" ARE INTERNAL REFERENCE LISTS ONLY AND ARE NOT FOR ISSUE
 ANY MANUAL ALTERATION SHALL AUTOMATICALLY RENDER THIS DRAWING INVALID.
 FOR UNTOLERANCED DIMENSIONS REFER HDG0008 DATE OF FIRST ISSUE 28/05/2018

ITEM NO	DESCRIPTION & DIMENSIONS	QUANTITY	DETAIL DRG	MAT. & SPEC.	REMARKS
5	SWITCH PLATE ASSEMBLY FOR 3NDS.	1	NIL	NIL	OF M/S SSK
4	SWITCH PLATE ASSEMBLY FOR 2NDS.	1	NIL	NIL	OF M/S SSK
3	SWITCH PLATE ASSEMBLY FOR 3NDS.	1	NIL	NIL	OF M/S SSK
2	SWITCH PLATE ASSEMBLY FOR 2NDS.	1	NIL	NIL	OF M/S SSK
1	SWITCH PLATE ASSEMBLY FOR 1NO.	1	NIL	NIL	OF M/S SSK

WELD LENGTH	ITEM	DESCRIPTION & DIMENSIONS	QUANTITY	DETAIL DRG	MAT. & SPEC.	REMARKS
NIL	GROUP	ELECTRICAL				

SCALE	\$\$\$/\$	CRD	DDN	ASSEMBLY	PL NO.	NIL

FILE	DESCRIPTION	DATE	BY	CHKD	APP'D
F:\Home\PAVNE-Drive\DRG\SKED-740.prt	SWITCH PLATE ASSEMBLY (FOR MEMU DMC/TC CHOACHES)				

DRG. NO.	SKED-740
PL. NO.	NIL

DATE	BY	CHKD	APP'D
28/05/2018			