

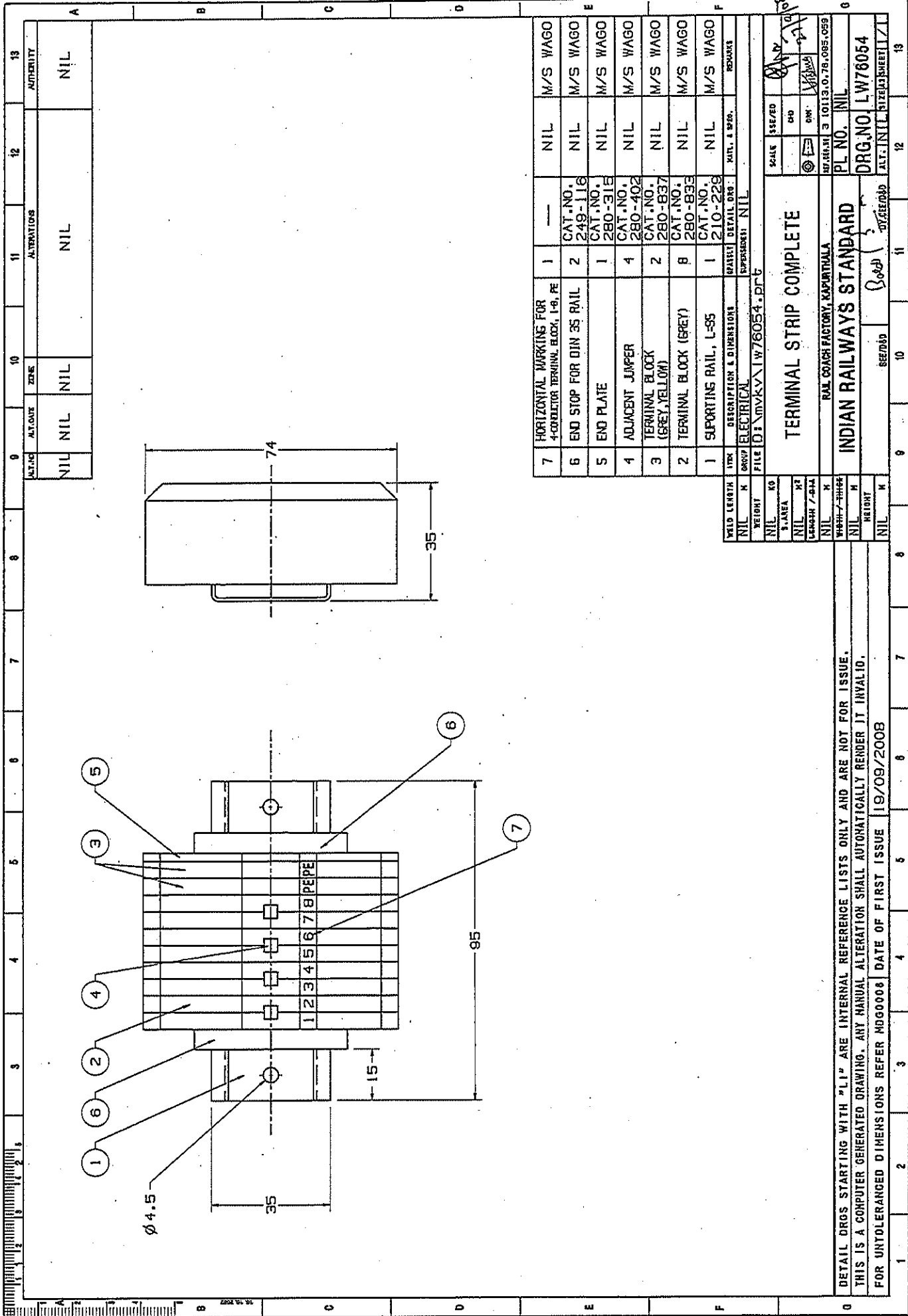
RAIL COACH FACTORY, KAPURTHALA

Document No.: EDML051-(Rev.-A)

TERMINAL STRIP FOR LHB SG AC 2 TIER TYPE COACHES

Sr. No.	Item	Drawing/Spec No.	Unit	Qty	Remarks
1	4 Conductor terminal strip 2.5sq.mm (10 pole)	WAGO CAT No. 261-210 or equivalent approved make	01	09	For Compartment lighting
2	4 Conductor terminal strip 4sq.mm (11 pole)	WAGO CAT No. 262-211 or equivalent approved make	01	09	For Reading lights
3	4 Conductor terminal strip 2.5sq.mm (3 pole)	WAGO CAT No. 261-203 or equivalent approved make	01	13	For Earthing & Accident emergency lighting
4	Jumper Bar	WAGO CAT No. 261-402 or equivalent approved make	01	09	
5.	Terminal strip	LW76054	01	02	For lighting (Non AC area)

EDML051	A	1.8.09	<i>Rani</i>	<i>Q</i>	<i>↓</i>	<i>Baski</i>	
EDML No.	REV.	Dated	SE/CAD	SSE/CAD	SEE/D	DYCEE/D&D	Pg 1 of 1



13	12	11	10	9	8	7	6	5	4	3	2	1
AUTHORITY		ALTERATIONS		DATE	DATE	DATE	DATE	DATE	DATE	DATE	DATE	DATE
NIL		NIL		NIL	NIL	NIL	NIL	NIL	NIL	NIL	NIL	NIL

7	HORIZONTAL MARKINGS FOR 4-CORNER TERMINAL BLOCK, L-9, PE	1	---	NIL	M/S WAGO
6	END STOP FOR DIN 35 RAIL	2	CAT. NO. 249-116	NIL	M/S WAGO
5	END PLATE	1	CAT. NO. 280-318	NIL	M/S WAGO
4	ADJACENT JUMPER	4	CAT. NO. 280-402	NIL	M/S WAGO
3	TERMINAL BLOCK (GREY, YELLOW)	2	CAT. NO. 280-837	NIL	M/S WAGO
2	TERMINAL BLOCK (GREY)	8	CAT. NO. 280-833	NIL	M/S WAGO
1	SUPPORTING RAIL, L-95	1	CAT. NO. 210-229	NIL	M/S WAGO
WELD LENGTH		1704	DESCRIPTION & DIMENSIONS	REMARKS	
NIL	GROUP	ELECTRICAL	SHAFT	DETAIL DRG.	MAT. & SPEC.
WEIGHT		EQUIVALENT NIL			
NIL	NO	FILE D:\MVKV\176054.DWG			
SCALE					
TERMINAL STRIP COMPLETE					
RAIL COACH FACTORY, KAPURTHALA					
INDIAN RAILWAYS STANDARD					
PL NO. NIL					
DRG. NO. LW76054					
DATE OF FIRST ISSUE 19/09/2008					
FOR UNTOLERANCED DIMENSIONS REFER MDG0008					

DETAIL DRGS STARTING WITH "L1" ARE INTERNAL REFERENCE LISTS ONLY AND ARE NOT FOR ISSUE.
 THIS IS A COMPUTER GENERATED DRAWING. ANY MANUAL ALTERATION SHALL AUTOMATICALLY RENDER IT INVALID.
 FOR UNTOLERANCED DIMENSIONS REFER MDG0008 DATE OF FIRST ISSUE 19/09/2008

19/09/2008