

MATERIAL LIST FOR SWITCH PLATES FOR LHB HOT BUFFET COACH

It covers the supply of switch plates provided in the LHB Type Hot Buffet Coach.

TABLE-1

S. no.	Description	Drawing no.	QPC
1.	Switch plate assembly complete with polycarbonate cover frame and powder coated steel plate with 4-nos. 6A, 250V Switches	Item-1 of LH74205	4
2.	Switch plate assembly complete with polycarbonate cover frame and powder coated steel plate with 2-nos. 6A, 250V Switches	Item-2 of LH74205	3
3.	Switch plate assembly complete with polycarbonate cover frame and powder coated steel plate with 1-no. 16A, 250V Switch (with LED indication) and 1-no. 6/16A, 250V AC 6-Pin shuttered Socket	Item-3 of LH74205	8

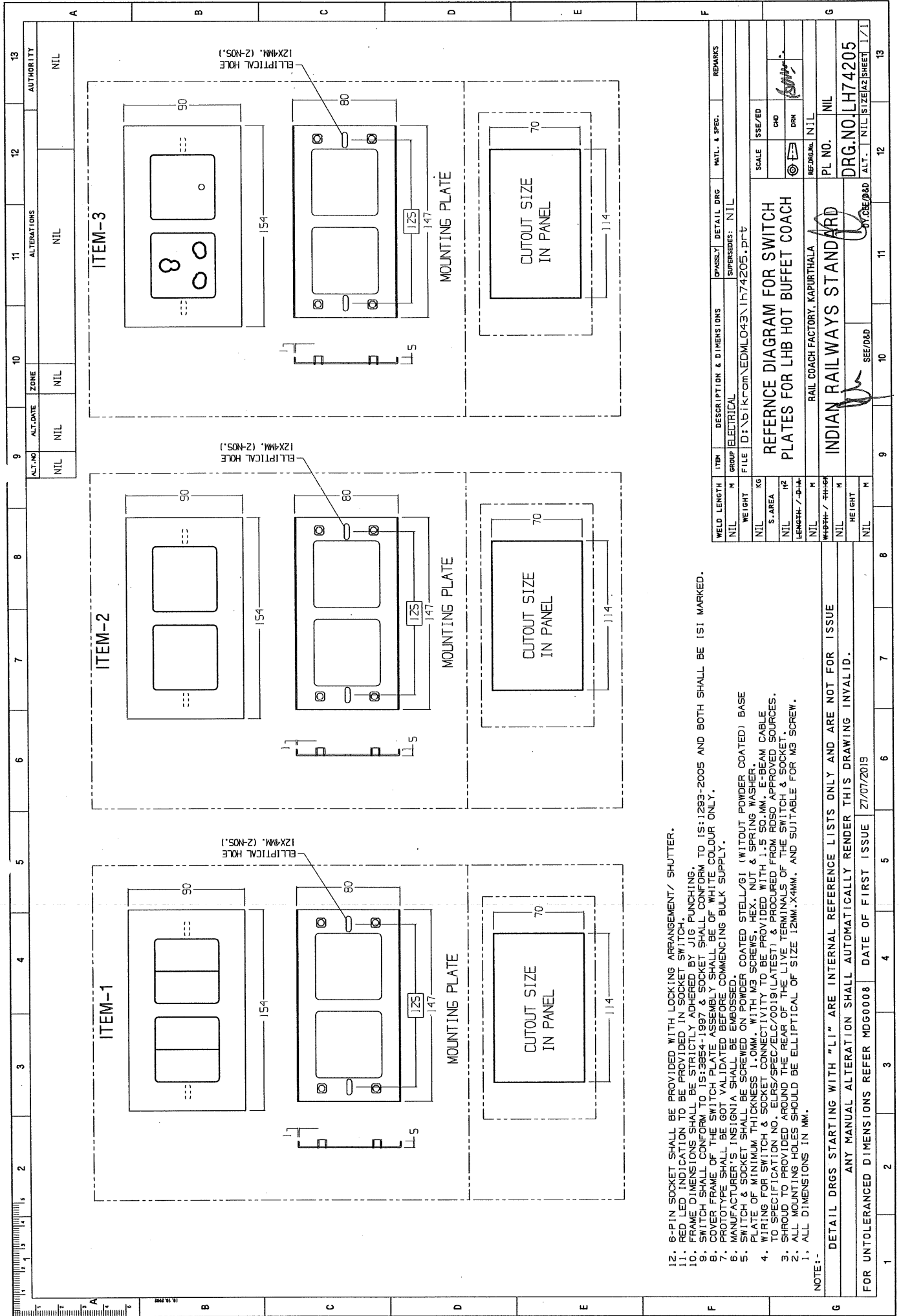
Packing conditions of Switch Plates shall be as follows:

- Stage-1: Standard packing of switch plates as per packing conditions document no. PI042.
- Stage-2: Packing per coach set as per packing conditions document no. PI021. Each packing shall be legibly marked for the type of coach applicable.
- Stage-3: Bulk packing coach wise as per packing conditions document no. PI032. Each packing shall be legibly marked for the type of coach/coaches applicable for.

N.B.

1. Prototype sample shall be got approved from CEDE/RCF before commencing bulk supplies.
2. Switch shall conform to IS: 3854-1997 & socket shall conform to IS: 1293-2005 and both shall be ISI marked.
3. Red colour LED indication shall be provided in charging socket switch.
4. Following test shall be conducted from Govt./NABL accredited lab:-
 - i. Test for polymer identification of FR polycarbonate material.
 - ii. Fire retardant test to grade UL94-V0 from the OEM of the raw material.
 - iii. Test for composition of contact material (fixed and moving).

EDML-043	A	30.07.2019	<i>Ban</i> :	<i>pu</i>	<i>D</i>	1 of 1
Document No.	Rev.	Date	SSE/CAD	SEE/D	Dy.CEE/D&D	Page no.



12. 6-PIN SOCKET SHALL BE PROVIDED WITH LOCKING ARRANGEMENT/ SHUTTER.
 11. RED LED INDICATION TO BE PROVIDED IN SOCKET SWITCH.
 10. FRAME DIMENSIONS SHALL BE STRICTLY ADHERED BY JIG PUNCHING.
 9. SWITCH SHALL CONFORM TO IS:3854-1997 & SOCKET SHALL CONFORM TO IS:1293-2005 AND BOTH SHALL BE ISI MARKED.
 8. COVER FRAME OF THE SWITCH PLATE ASSEMBLY SHALL BE OF WHITE COLOUR ONLY.
 7. PROTOTYPE SHALL BE GOT VALIDATED BEFORE COMMENCING BULK SUPPLY.
 6. MANUFACTURER'S INSIGNIA SHALL BE EMBOSSED.
 5. SWITCH & SOCKET SHALL BE SCREWED ON POWDER COATED STEEL/GI (WITHOUT POWDER COATED) BASE PLATE OF MINIMUM THICKNESS 1.0MM. WITH M3 SCREWS, HEX. NUT & SPRING WASHER.
 4. WIRING FOR SWITCH & SOCKET CONNECTIVITY TO BE PROVIDED WITH 1.5 SO.MM. E-BEAM CABLE TO SPECIFICATION NO. ELRS/SPEC/ELC/0019 (LATEST) & PROCURED FROM RSO APPROVED SOURCES.
 3. SHROUD TO PROVIDED AROUND THE REAR OF THE LIVE TERMINALS OF THE SWITCH & SOCKET.
 2. ALL MOUNTING HOLES SHOULD BE ELLIPTICAL OF SIZE 12MM.X4MM. AND SUITABLE FOR M3 SCREW.
 1. ALL DIMENSIONS IN MM.

NOTE:-
 1. ALL DIMENSIONS IN MM.
 2. ALL MOUNTING HOLES SHOULD BE ELLIPTICAL OF SIZE 12MM.X4MM. AND SUITABLE FOR M3 SCREW.
 3. SHROUD TO PROVIDED AROUND THE REAR OF THE LIVE TERMINALS OF THE SWITCH & SOCKET.
 4. WIRING FOR SWITCH & SOCKET CONNECTIVITY TO BE PROVIDED WITH 1.5 SO.MM. E-BEAM CABLE TO SPECIFICATION NO. ELRS/SPEC/ELC/0019 (LATEST) & PROCURED FROM RSO APPROVED SOURCES.
 5. SWITCH & SOCKET SHALL BE SCREWED ON POWDER COATED STEEL/GI (WITHOUT POWDER COATED) BASE PLATE OF MINIMUM THICKNESS 1.0MM. WITH M3 SCREWS, HEX. NUT & SPRING WASHER.
 6. MANUFACTURER'S INSIGNIA SHALL BE EMBOSSED.
 7. PROTOTYPE SHALL BE GOT VALIDATED BEFORE COMMENCING BULK SUPPLY.
 8. COVER FRAME OF THE SWITCH PLATE ASSEMBLY SHALL BE OF WHITE COLOUR ONLY.
 9. SWITCH SHALL CONFORM TO IS:3854-1997 & SOCKET SHALL CONFORM TO IS:1293-2005 AND BOTH SHALL BE ISI MARKED.
 10. FRAME DIMENSIONS SHALL BE STRICTLY ADHERED BY JIG PUNCHING.
 11. RED LED INDICATION TO BE PROVIDED IN SOCKET SWITCH.
 12. 6-PIN SOCKET SHALL BE PROVIDED WITH LOCKING ARRANGEMENT/ SHUTTER.

DETAIL DRGS STARTING WITH "LI" ARE INTERNAL REFERENCE LISTS ONLY AND ARE NOT FOR ISSUE
 ANY MANUAL ALTERATION SHALL AUTOMATICALLY RENDER THIS DRAWING INVALID.
 FOR UNTOLERANCED DIMENSIONS REFER MDOG0008 DATE OF FIRST ISSUE 27/07/2019

WELD LENGTH	ITEM	DESCRIPTION & DIMENSIONS	IPASSY	DETAIL DRG	MATL. & SPEC.	REMARKS
NIL	M	GROUP ELECTRICAL				
WEIGHT	FILE	D:\vikram\EDMLO43\H74205.DWG	SUPERSEDES:	NIL		
NIL	KG					
S. AREA	M2					
LENGTH / DIA	M					
NIL	M					
WEIGHT / SHEET	M					
NIL	M					
HEIGHT	M					
NIL	M					

SCALE	ISSUED
CHD	
DRN	
REF. DRG.	NIL
PL NO.	NIL
DRG. NO.	LH74205
ALT.	NIL
SIZE	A3
SHEET	1/1

INDIAN RAILWAYS STANDARD
 RAIL COACH FACTORY, KAPURTHALA

13

12

11

10

9

8

7

6

5

4

3

2

1

13

12

11

10

9

8

7

6

5

4

3

2

1

13

12

11

10

9