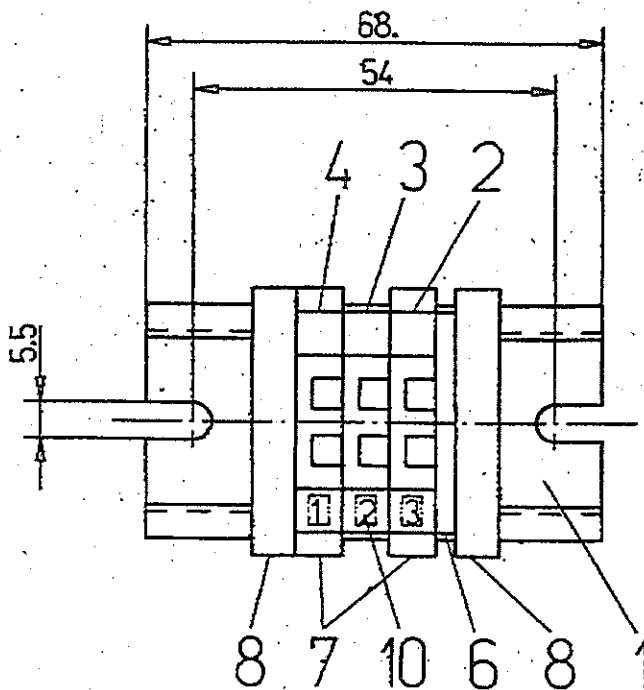


(S)

EDML022

Connector block for Level Sensor connection box for LHB coaches

Sr. No.	Item No	Description	Catalogue no	qpc
1.	1	Din rail 35 x 7.5 mm ; length = 68 mm	210-113 of M/s WAGO or any other equivalent approved make	1
2.	2	2-conductor terminal block (Grey)	262-311 of M/s WAGO or any other equivalent approved make	1
3.	3	2-conductor terminal block (blue)	262-314 of M/s WAGO or any other equivalent approved make	1
4.	4	2-conductor clamp (orange)	262-316 of M/s WAGO or any other equivalent approved make	1
5.	6	End plate with snap in mounting foot	262-371 of M/s WAGO or any other equivalent approved make	1
6.	7	Mounting foot with screw fixing, suitable for carrier rail DIN 35	209-120 of M/s WAGO or any other equivalent approved make	2
7.	8	End stop	209-137 of M/s WAGO or any other equivalent approved make	1
8.	10	Name plate	Terminal codification numbering 1to3 of M/s WAGO or any other equivalent approved make	1



EDML022	0	8.5.2001				1 OF 1
SPEC. NO.	REV.	DATE	UNIT SUPERVISOR	SEE/D&D	DY/CEE/D&D	SHEET