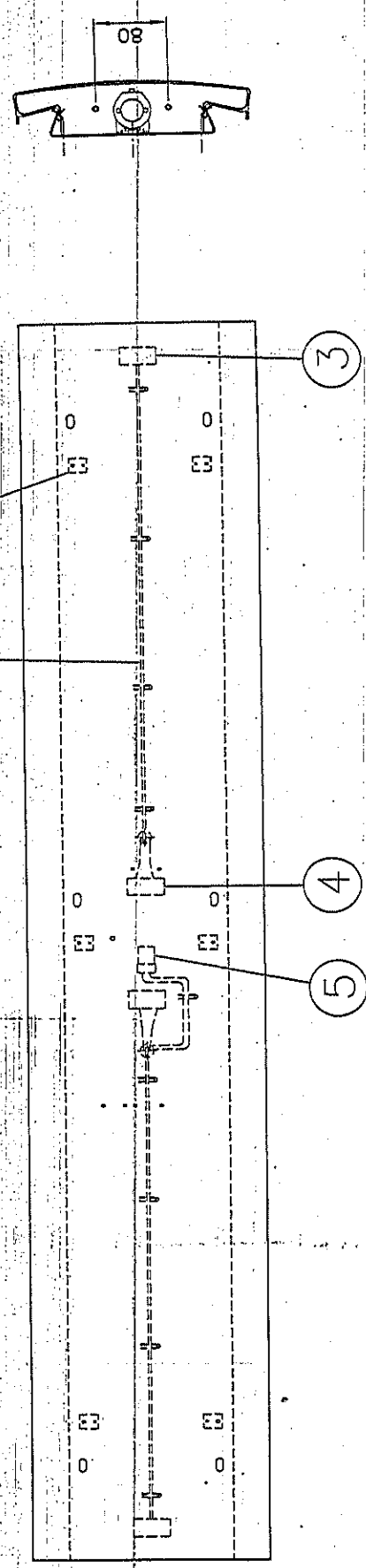
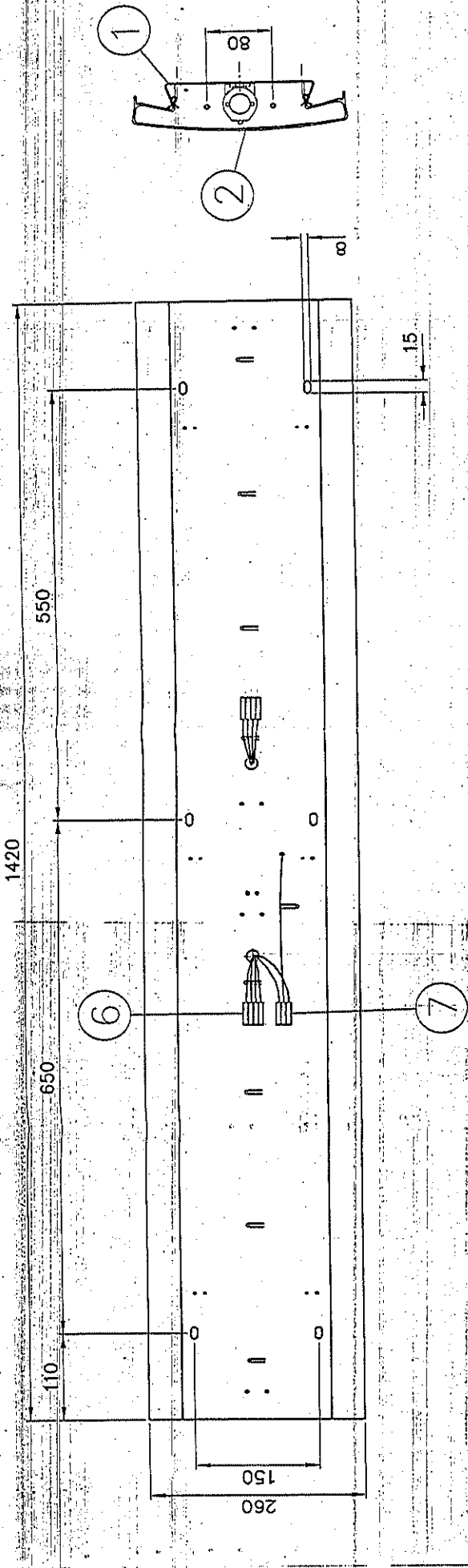


Material List No. EDML012

Material List for Compartment Light for AC Chair Cars (LHB Type)

Sno	Description	M/S Teknoware Product Code/ Drawing No.	QPA
1	Ceiling Light Fitting (L=1420mm) W/o ballast	TV87718/3D87701, 3D87703	8
2	Ceiling Light Fitting (L=580mm) W/o ballast	TV87702/3D87702	7
3	Ceiling Light Fitting (L=285mm) W/o ballast	TV87701/3D87702	2

Handwritten marks: a circle with a horizontal line through it, and a checkmark.

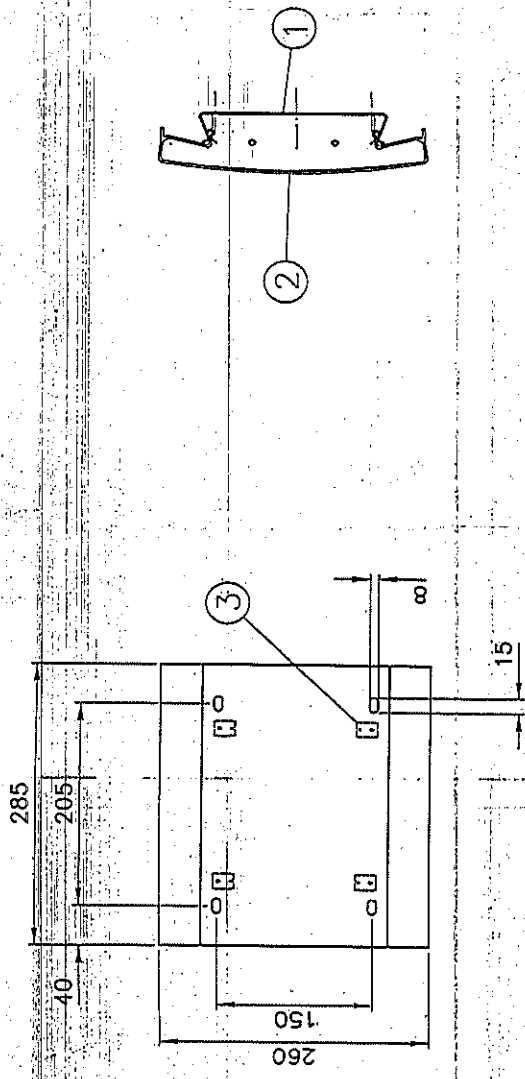


Tolerances: DIN 7168g

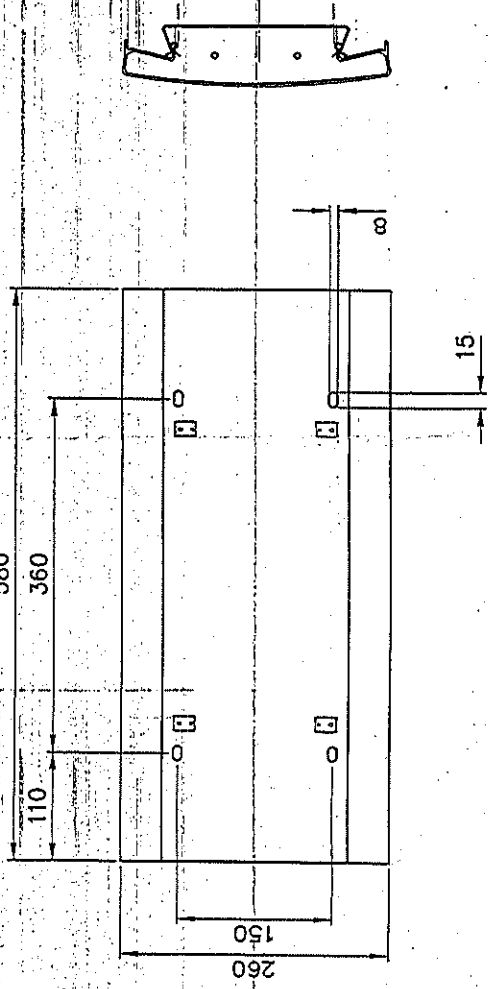
Date	By	Check	App.	Rev	SCALE	Date	Name
				B	1:5	22 Feb 99	JR
				C		26.2.99	S
				D	(A3)	26.2.99	T-1
				E			
				F			
				G			
				H			

TEKNOWARE®
 LHB INDIA
 CEILING LIGHTING
 TV 87/18 2x18W+10W
 DRAWING NO. 3D87/01

COPYING OF THIS DOCUMENT AND GIVING IT TO OTHERS AND THE USE OR COMMUNICATION OF THE CONTENTS THEREOF ARE FORBIDDEN WITHOUT EXPRESS AUTHORITY. OFFENDERS ARE LIABLE TO THE PAYMENT OF DAMAGES. ALL RIGHTS ARE RESERVED IN THE EVENT OF THE GRANT OF A PATENT OR THE REGISTRATION OF A MODEL OR DESIGN.



TV 87701



TV 87702

Tolerances: DIN 7168g

TEKNOWARE® I N D I A		SCALE 1:5		Date 22 Feb 99		Name JR	
LHB INDIA CEILING LIGHTING TV-87701, TV-87702		BY	Check App.	Rev	SCALE	Date	Name
				B	1:5	22 Feb 99	JR
				C	(A3)	26.2.99	LT
				D		26.2.99	LT
				E	Old no.		New no.
				F	DRAWING NO.		
				G	3D87702		
				H			

COPYING OF THIS DOCUMENT AND GIVING IT TO OTHERS AND THE USE OR COMMUNICATION OF THE CONTENTS THEREOF ARE FORBIDDEN WITHOUT EXPRESS AUTHORITY. OFFENDERS ARE LIABLE TO THE PAYMENT OF DAMAGES. ALL RIGHTS ARE RESERVED IN THE EVENT OF THE GRANT OF A PATENT OR THE REGISTRATION OF A MODEL OR DESIGN.

902-2-1305 70216492

Product/Produkt:	TV87701	102 64 92
Drawing number/Zeichnungsnummer:	3D87702	

Number/Nummer	Part	Teil	Description/Beschreibung	Qty
1	Frame	Körper	Al 1,2 White/Weiß	1
2	Diffuser	Abdeckung	Polycarbonate/Polykarbonat	1
3	Spring	Feder	Fe 1,0	4

Product/Produkt:	TV87702	102 64 95
Drawing number/Zeichnungsnummer:	3D87702	

Number/Nummer	Part	Teil	Description/Beschreibung	Qty
1	Frame	Körper	Al 1,2 White/Weiß	1
2	Diffuser	Abdeckung	Polycarbonate/Polykarbonat	1
3	Spring	Feder	Fe 1,0	4

9

Product/Produkt: TV87718
Drawing number/Zeichnungsnummer: 3D87701, 3D87703

1026433

Number/ Nummer	Part	Teil	Description/Beschreibung	Qty
1	Frame	Körper	Al 1,2 White/Weiß	1
2	Diffuser	Abdeckung	Polycarbonate/Polykarbonat	1
3	Lamp holder Tube with spring	Lampenfassung Rohr mit Feder	Vossloh 46103	2
4	Lamp holder Tube without spring	Lampenfassung Rohr ohne Feder	Vossloh 46102	2
5	Lamp holder Bulb	Lamp holder Glühlampe	Ba15d	1
6	Connector	Klemme	Wago 721-604	2
7	Connector	Klemme	Wago 721-603	1
8	Wiring	Verkabelung	0.75 mm ² Halogenfree/ Halogenfrei	1
9	Spring	Feder	Fe 1,0	6

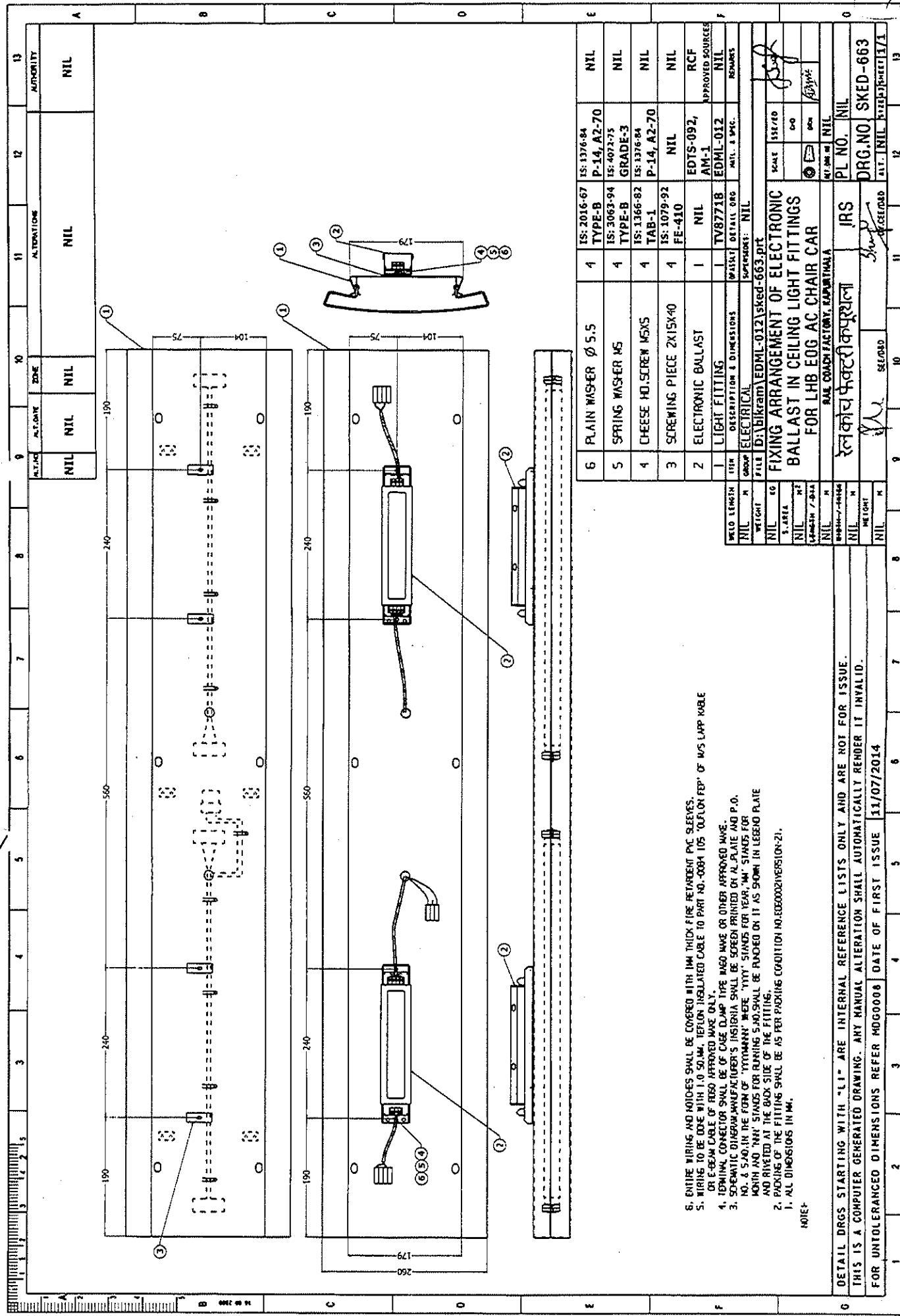
Amendment-1

This amendment is issued to EDML-012 for compartment lights for AC chair cars (LHB type) to incorporate the provision of electronic ballasts and associated wiring and to be supplied in fully assembled condition for installation in coaches.

The scope of supply shall be read follows:

Sr. No	Description	M/s Technoware product code/ Drawing no.	QPA
1.	Ceiling light fitting(L=1420mm)w/o ballast	TV87718/3D87701, 3D87703	8
2.	Ceiling light fitting(L=580mm)w/o ballast	TV87702/3D87702	7
3.	Ceiling light fitting(L=285mm)w/o ballast	TV87701/3D87702	2
4.	Fixing arrangement of electronic ballast in ceiling light fittings for LHB EOG AC Chair Cars	SKED-663	lot

EDML-012	1	15.7.14	<i>[Signature]</i>	<i>[Signature]</i>	<i>[Signature]</i>	1 OF 1
SPEC. NO.	Amdt.	DATE	SSE/EAD	AEE/D	DY.CEE/D&D	PAGE



NOTE:-
 1. ALL DIMENSIONS IN MM.
 2. PACKING OF THE FITTING SHALL BE AS PER PACKING CONDITION NO. E000002 (VERSION-2).
 3. SCHEMATIC DIAGRAM MANUFACTURER'S JUSTINIA SHALL BE SCREEN PRINTED ON ALUMINATE AND P.O. NO. A S.A.O. IN THE FORM OF 'TYPOMARK' WHERE 'YYYY' STANDS FOR YEAR, 'MM' STANDS FOR MONTH AND 'MM' STANDS FOR RUNNING S.A.O. SHALL BE RANDED ON IT AS SHOWN IN LEGEND PLATE AND RIVETED AT THE BOX SIDE OF THE FITTING.
 4. TERMINAL CONNECTOR SHALL BE OF CAGE CLAMP TYPE WAGO WAVE OR OTHER APPROVED MAKE.
 5. WIRING TO BE DONE WITH 1.0 SQ.MM. TEFLON INSULATED CABLE TO PART NO. 0004 105 'OULON FEP' OF W5 LAPP KABLE OR E-SEAM CABLE OF TESO APPROVED MAKE ONLY.
 6. ENTIRE WIRING AND MOTICES SHALL BE COVERED WITH 1MM THICK FIRE RETARDANT PVC SLEEVES.

ITEM NO.	DESCRIPTION & DIMENSIONS	QUANTITY	DETAIL DRG.	APPROVED SOURCE	REMARKS
1	PLAIN WASHER Ø 5.5	4	IS: 2016-67 TYPE-B P-14, A2-70	IS: 1376-84	NIL
2	ELECTRONIC BALLAST	1	EDTS-092, AM-1	IS: 3063-94 TYPE-B	NIL
3	SCREWING PIECE 2X15X40	4	FE-410	IS: 4072-75 GRADE-3	NIL
4	CHEESE HD. SCREW M5X5	4	TAB-1	IS: 1366-82 IS: 1376-84	NIL
5	SPRING WASHER M5	4	TYPE-B	IS: 1376-84 P-14, A2-70	NIL
6	LIGHT FITTING	1	TV87718	EDML-012	RCF

W/O LENGTH	W/O WEIGHT	W/O AREA	W/O PERIMETER	W/O VOLUME	W/O SURFACE AREA	W/O MASS	W/O MOMENT OF INERTIA	W/O CENTER OF GRAVITY	W/O TOLERANCES	W/O FINISH	W/O TREATMENT	W/O MARKING	W/O IDENTIFICATION	W/O STORAGE	W/O HANDLING	W/O TRANSPORT	W/O DELIVERY	W/O INSPECTION	W/O TESTING	W/O RECORDING	W/O ARCHIVING	
NIL	NIL	NIL	NIL	NIL	NIL	NIL	NIL	NIL	NIL	NIL	NIL	NIL	NIL	NIL	NIL	NIL	NIL	NIL	NIL	NIL	NIL	NIL

DETAIL DRGS STARTING WITH "L1" ARE INTERNAL REFERENCE LISTS ONLY AND ARE NOT FOR ISSUE.
 THIS IS A COMPUTER GENERATED DRAWING. ANY MANUAL ALTERATION SHALL AUTOMATICALLY RENDER IT INVALID.
 FOR UNTOLERANCED DIMENSIONS REFER MCG00008 DATE OF FIRST ISSUE 11/07/2014

PL NO. NIL
 DRG. NO. SKED-663
 FILED IN: SKED-663

DATE: 11/07/2014
 DRAWN BY: [Signature]
 CHECKED BY: [Signature]
 APPROVED BY: [Signature]

CORRIGENDUM TO EDML-012, AM-1

This corrigendum is issued to EDML-012 Am-1 for compartment lights for AC chair cars (LHB type) wherein the SKED-663, Alt-'nil' may be read as SKED-663, Alt-'a'

EDML-012, AM-1	1	20.07.15	<i>[Signature]</i>	<i>[Signature]</i>	<i>[Signature]</i>	1 OF 1
SPEC.NO.	CORR.	DATE	SSE/CAD	SEE/D.	DY.CEE/D&D	PAGE

