

Material List No. EDML007

RAIL COACH FACTORY, KAPURTHALA

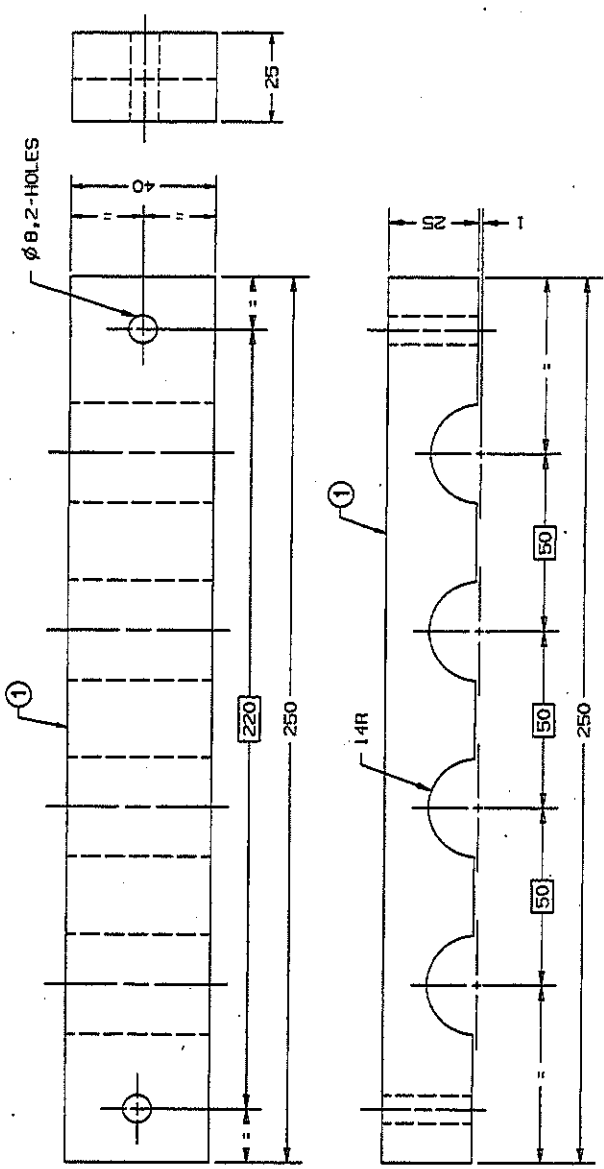
MATERIAL LIST NO. EDML007

LIST OF FRP CLEATS TO BE SUPPLIED IN ONE SET
(FOR SELF GENERATING AC COACHES)

SNO.	DESCRIPTION	DRG/SPEC.	QTY/SET
1.	FRP Cleat 25x40x250	CC71445 Item-1	8
2.	FRP Cleat 40x56x240	CC71445 Item-2	2
3.	FRP Cleat 25x40x240	CC71445 Item-3	2

EDML007	0	09.07.98	अ.स.	Var	DK	01 of 01
MAT.LIST NO.	Rev.	Date	Prpd	Chkd	Appd	Sheet

1	2	3	4	5	6	7	8	9	10	11	12	13	
A													
ALTERNATIONS									ALTERNATIONS				AUTHORITY
ALT. DATE									ZONE				DIC NO.
b 20/04/2005									ALL				ED050004
c 11/10/2005									ALL				ED050013
B													
C													
D													
E													
F													
G													



NOTE: - 1. ALL DIMENSIONS TO BE STRICTLY ADHERED TO.
 2. DIMENSIONS STARTING WITH "1" ARE INTERNAL REFERENCE LISTS ONLY AND ARE NOT FOR ISSUE.
 THIS IS A COMPUTER GENERATED DRAWING. ANY MANUAL ALTERATION SHALL AUTOMATICALLY RENDER IT INVALID.
 FOR UNTOLERANCED DIMENSIONS REFER HDG0008 DATE OF FIRST ISSUE 20/04/2005

ITEM	QTY	107/ELEC/852	FRP	NIL	REMARKS
GROUP	DESCRIPTION & DIMENSIONS	DETAIL DRG	MAT. A. WRO.		
FILE	ELECTRICAL	CC71445 ALT b			
WELD LENGTH	WEIGHT	SCALE	SSE/EO		
NIL	NIL	1:1			
S. AREA	WIDTH				
NIL	14R				
LENGTH / DIA	HEIGHT				
NIL	NIL				
CLEATS (FOR FIXING ARRGT. OF FLEXIBLE CONDUITS FROM ALTERNATOR) RAIL COACH FACTORY, KAPURTHALA					
INDIAN RAILWAYS STANDARD					
PL. NO. NIL					
DRG. NO. CC71445					
ALT. LC. CC71445C.DRT					