

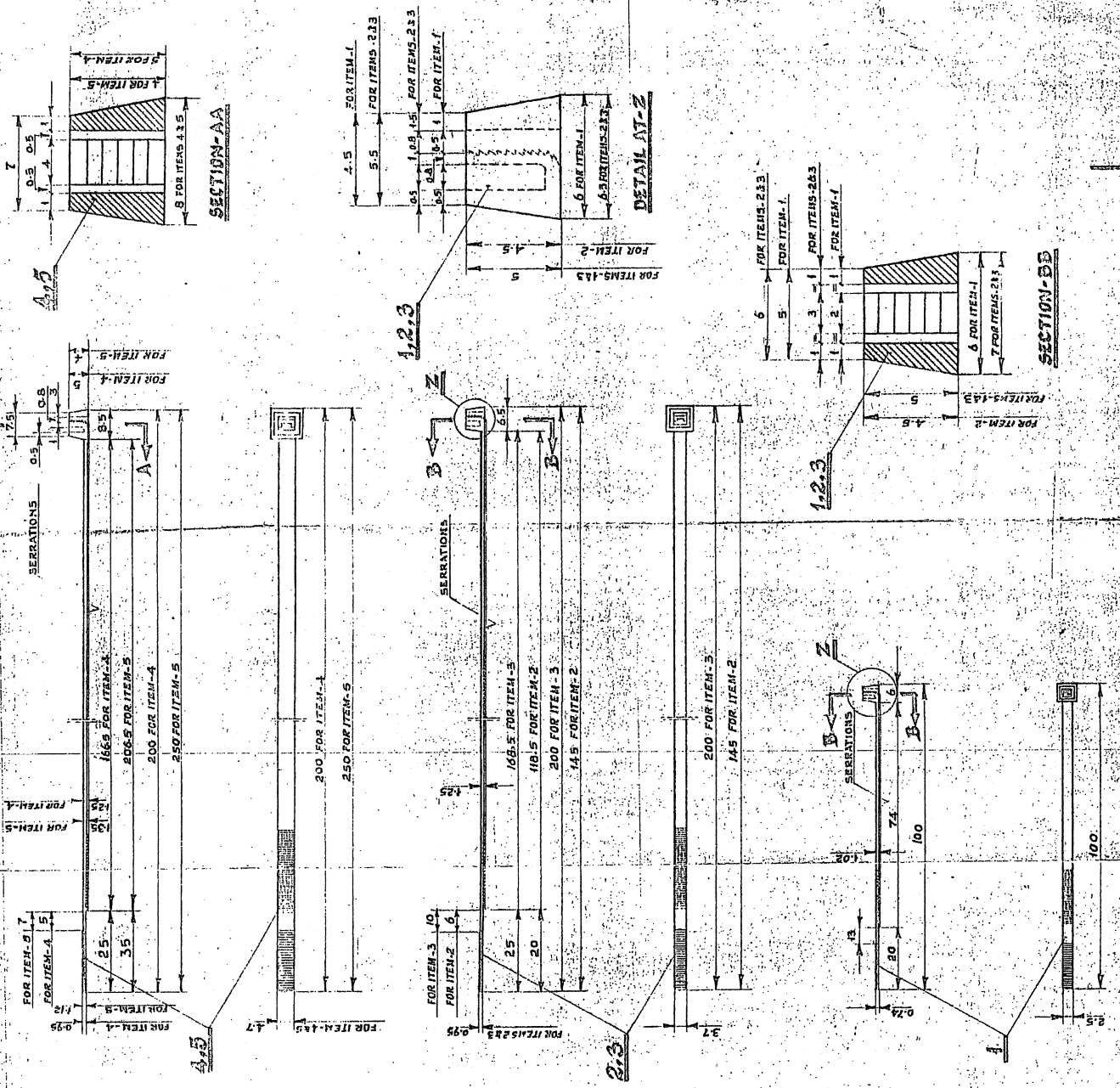
MATERIAL LIST NO.EDML002

RAIL COACH FACTORY, KAPURTHALA
MATERIAL LIST NO.EDML002
LIST OF CABLE TIES TO BE SUPPLIED IN ONE SET
(FOR MEMU/DMC).

SNO	DESCRIPTION	DRG./SPEC.	QTY/SET
1.	Nylon cable tie	MR/SK-7-6-015/1 alt.'b'	225
2.	Nylon cable tie	MR/SK-7-6-015/2 alt.'b'	200
3.	Nylon cable tie	MR/SK-7-6-015/3 alt.'b'	600
4.	Nylon cable tie	MR/SK-7-6-015/4 alt.'b'	2100
5.	Nylon cable tie	MR/SK-7-6-015/5 alt.'b'	1100

EDML002	0	09.5.98	<i>[Signature]</i>	<i>[Signature]</i>	<i>[Signature]</i>	1 of 1
MAT.LIST NO.	REV.	DATE	PRPD	CHKD	APPD	SHEET

MR/SK-7-6-015



ITEM	REVISION	DATE
1	30	77
2	110	118-5
3	165	168-5
4	175	191-5
5	215	206-5

IN THE FIGURE WIDTH OF ITEM 4-5 ALTERED FROM 4-5 AND 5 TO 4-7 ONLY.

CDA/E/MP 544

1185
IN ITEM 4 DIMENSION 491.5 AND 325 ALTD TO 4.9
166.5 AND 200 RESPECTIVELY
CDA/E/MP 544

ALTERATIONS
5/85
THE FOLLOWING
ALTERATIONS ARE
EFFECTED.

NOTE:
1. SERRATIONS TO BE PROVIDED SUCH THAT THE PLAIN SURFACE DOES NOT MAKE GRIP OVER THE CABLES.
* 2. MATL. TO BE SELF-EXTINGUISHING TO SUIT TEMPERATURE RANGE 40°C - 85°C.

ITEM	DESCRIPTIONS & DIMENSIONS	MAT. & SPEC.	REMARKS
5	CABLE TIE 250L, A7H	NYLON	*
4	CABLE TIE 200L, A7W	NYLON	*
3	CABLE TIE 200L, 37H	NYLON	*
2	CABLE TIE 145L, 37H	NYLON	*
1	CABLE TIE 100L, 25W	NYLON	*

SUPERSEDED BY: _____

SCALE: CDA, CHD, TRD, M. Adheshwari

DATE: 26-11-85

BY: _____

GROUP: _____

INTEGRAL COACH FACTORY
MADRAS-38

INDIAN RAILWAY STANDARDS

MR/SK-7-6-015

ALT.	DATE	SEE/INTD.	REVISIONS
1	26-11-85		