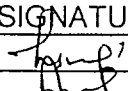
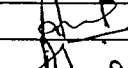
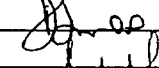



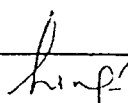
6

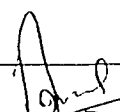
SCHEDULE	SCHEDULE OF INFRASTRUCTURAL REQUIREMENTS FOR MANUFACTURING & TESTING FOR OUTER DOOR ASSEMBLY (LH & RH) TO DRAWINGS NO. CC51005, CC51006, CC51111 & CC51112	MDST: 32 Rev: NIL PAGE 1 OF 4
		Dated 11.12.2005

## SCHEDULE OF INFRASTRUCTURAL REQUIREMENTS FOR MANUFACTURING & TESTING FOR OUTER DOOR ASSEMBLY (LH & RH)

NAME	DESIGNATION	SIGNATURE	DATE	LEVEL
Harish Kumar	SSE/VD		11/12/05	Prepared
Joginder Singh	ADE/VD		11/12/05	Agreed
Amitabh Sinha	Dy. CME/TOT		14/12/05	Reviewed
S.K. Aggarwal	CDE		27/12/05	Approved

Issue/Rev	Details of Changes	Date

  
Prepared By

  
Agreed By

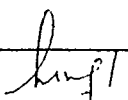
SCHEDULE	SCHEDULE OF INFRASTRUCTURAL REQUIREMENTS FOR MANUFACTURING & TESTING FOR OUTER DOOR ASSEMBLY (LH & RH) TO DRAWINGS NO. CC51005, CC51006, CC51111 & CC51112	MDST: 32 Rev: NIL PAGE 2 OF 4
		Dated 11.12.2005

## 1.0 REQUIREMENTS

1.1 This schedule is applicable for outer door assembly (LH & RH) to drawings no. CC51005, CC51006, CC51111 & CC51112 for conventional AC & Non-AC coaches. The vendors seeking approval shall comply with all the requirements mentioned below :

## 2.0 GENERAL & MANUFACTURING FACILITIES

- 2.1 Covered area with adequate space underneath for storage of raw materials e.g. sheets, billets, round corner squares, rounds etc. The covered area should have display board showing different colour shades nominated to different grades of steel to avoid mix up of materials. Arrangement of painting the billets, RCS rounds etc with particular paint shade previously nominated according to the grade of steel should be available.
- 2.2 At least 1 No. Fork-lift or 1 No. Over-head crane of 2t (Min.) capacity shall be available for material handling.
- 2.3 Minimum 1 No. of band saw /power hacksaw machine should be available.
- 2.4 Atleast one shearing machine of suitable capacity and of standard make shall be available.
- 2.5 Adequate machining facilities comprising of universal milling machine, radial drilling, centre-less grinding machine, lathe etc. of suitable capacities and standard makes should be available.
- 2.6 At least one no. of profile cutting machine with suitable facilities shall be available (In case, outer and inner door sheets are supplied by RCF, then profile-cutting machine is not required).
- 2.7 Atleast two numbers of MIG/MAG welding machine of suitable capacity and standard make shall be available.
- 2.8 Adequate Nos. of hand grinders for removal of fins & burrs shall be available.
- 2.9 The firm shall have atleast one press brake of suitable capacity along-with punch and dies for component forming/ bending.
- 2.10 The firm shall have atleast one power press of suitable capacity along-with set of punch and dies for blanking and forming.
- 2.11 The raw material should be procured from authorized distributor of original manufacturer of steel and firm should procure material with test certificate from primary manufacturer.
- 2.12 The raw materials e.g. electrodes, hard wares, rubber gaskets should be procured from original manufacturer and firm should procure material with test certificate.

  
Prepared By

  
Agreed By

SCHEDULE	SCHEDULE OF INFRASTRUCTURAL REQUIREMENTS FOR MANUFACTURING & TESTING FOR OUTER DOOR ASSEMBLY (LH & RH) TO DRAWINGS NO. CC51005, CC51006, CC51111 & CC51112	MDST: 32 Rev: NIL PAGE 3 OF 4
		Dated 11.12.2005

- 2.13 The firm shall comply with IS:822 regarding selection of weld wire, storage of consumables, calibration of welding equipment, training of welder, testing of welding and remedies for welding defects.
- 2.14 The welders shall have a minimum of 2 years experience of the same type of welding.
- 2.15 The firm shall have adequate fabrication and process capability to obtain all the tolerances and geometrical tolerances and shall have arrangement of jig/fixture/clamping device for main assembly & sub-assembly work.
- 2.16 The firm shall have suitable arrangement for doing the inside surface treatment as per MDT5064 and this shall be done in separate painting booth with suitable exhaust system
- 2.17 Firm shall have suitable facilities for shot blasting or hot phosphating.

### 3.0 TESTING FACILITIES

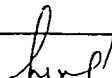
**3.1 Chemical Lab:** The firm should have permanent arrangement with NABL certified Lab or a reputed steel making company for arranging the spectro analysis of the material. (In case, outer and inner door sheets are supplied by RCF, then this testing is not required).

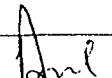
**3.2 Physical Testing Lab:** The firm must possess a well-equipped physical lab with following facilities:

- Universal testing machine of 40t capacity with load/ deflection plotting arrangement to conduct UTS, Yield strength. (In case, outer and inner door sheets are supplied by RCF, then this testing is not required).
- The firm shall have arrangement for conducting non- destructive test for welding as per requirement of the purchaser in house.

**3.3 Other Testing Facilities:** The firm shall possess the following:

- The firm shall have adequate facilities for preparation of test sample. Facilities like machining, grinding, polishing etc. should be available in house.
- Adequate number of fine punches for stamping marking particulars on finished components.
- Adequate numbers of measuring instruments such as:
  - Digital Vernier Calipers - 0 mm to 300 mm
  - Measuring scales – 3 meter
  - Inside & outside Micrometers - Ranging from 0 to 150 mm
  - GO & NO-GO gauges.
  - Profile gauges

  
Prepared By

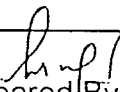
  
Agreed By

SCHEDULE	SCHEDULE OF INFRASTRUCTURAL REQUIREMENTS FOR MANUFACTURING & TESTING FOR OUTER DOOR ASSEMBLY (LH & RH) TO DRAWINGS NO. CC51005, CC51006, CC51111 & CC51112	MDST: 32 Rev: NIL PAGE 4 OF 4
		Dated 11.12.2005

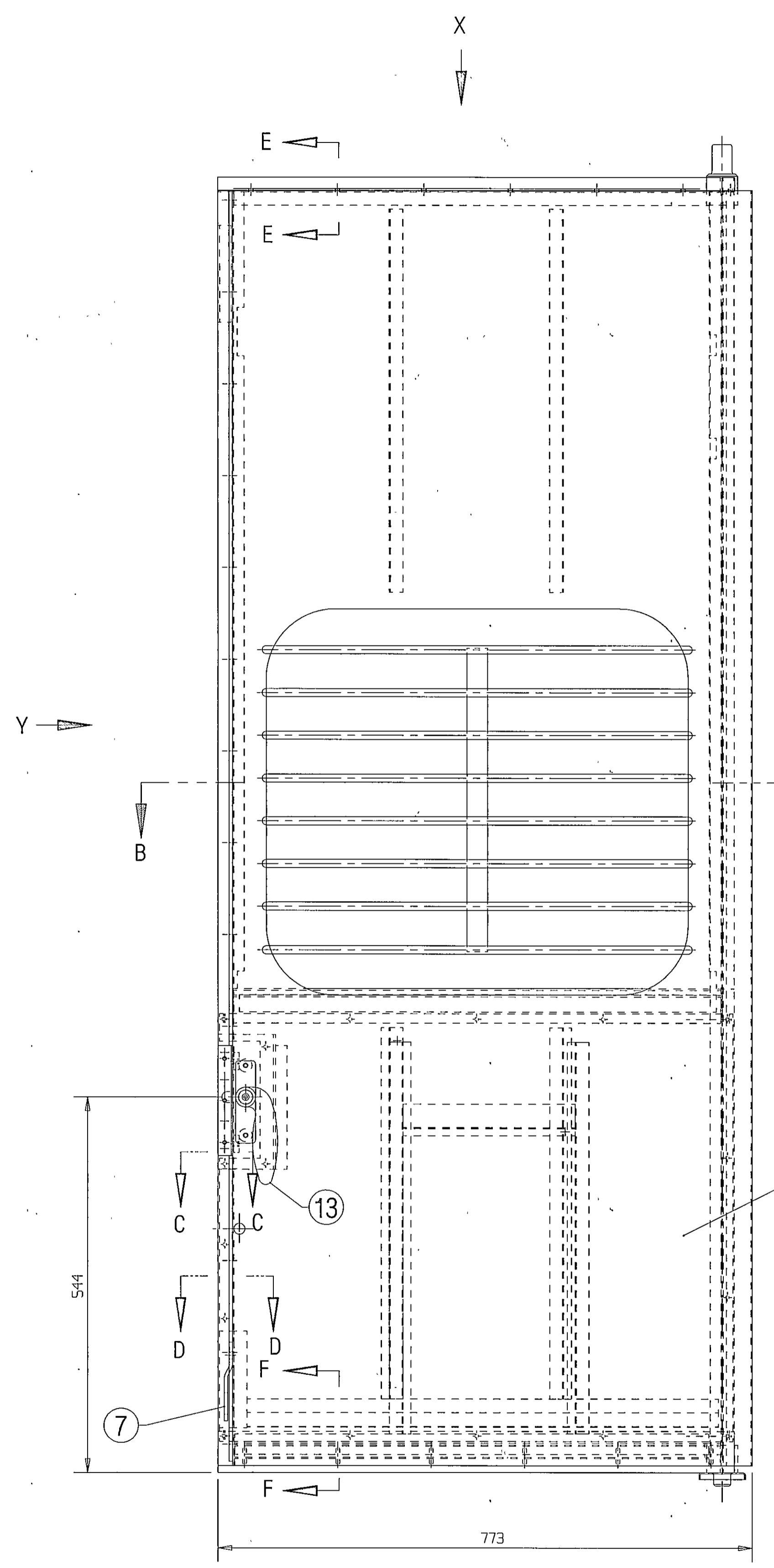
- Surface table of suitable size
- Straight edge

#### 4.0. QUALITY CONTROL REQUIREMENTS

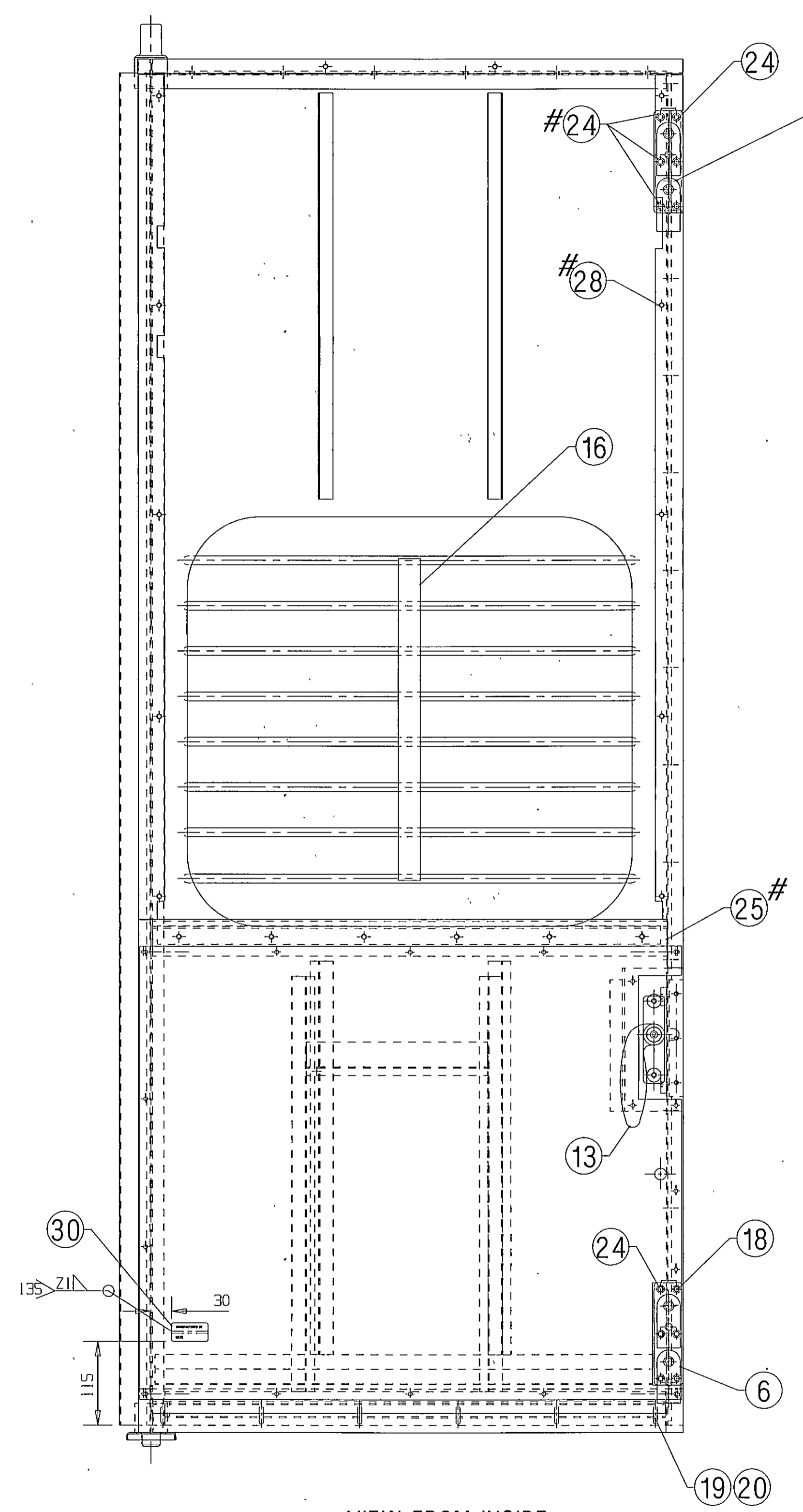
- 4.1 There should be a system to ensure the traceability of the product from raw material stage to finished product stage. This system should also facilitate to identify the raw material composition from the finish product stage.
- 4.2 Ensure that there is a QAP for the product detailing various aspects: -
- QA Organisational Chart
  - Flow Process Chart
  - Stage inspection details
  - Various parameters and to ensure control over them
- 4.3 There should be at least one full time technologist having a minimum bachelor's degree in relevant field & 5 years experience or a person with diploma in relevant field with 12 years experience.
- 4.4 The firm should have acquired ISO: 9000 series certification and the product for which an approval is sought should be broadly covered in the scope of the certification for manufacture and supply.
- 4.5 The Quality manual of the firm for ISO: 9000 should clearly indicate at any stage the control over manufacturing and testing of the said railway product.
- 4.6 The firm shall ensure that proper analysis is being done on monthly basis to study the rejection at various internal stages and it is documented.
- 4.7 The firm shall ensure that all the relevant specifications, IS standards are available with them.

  
Prepared By

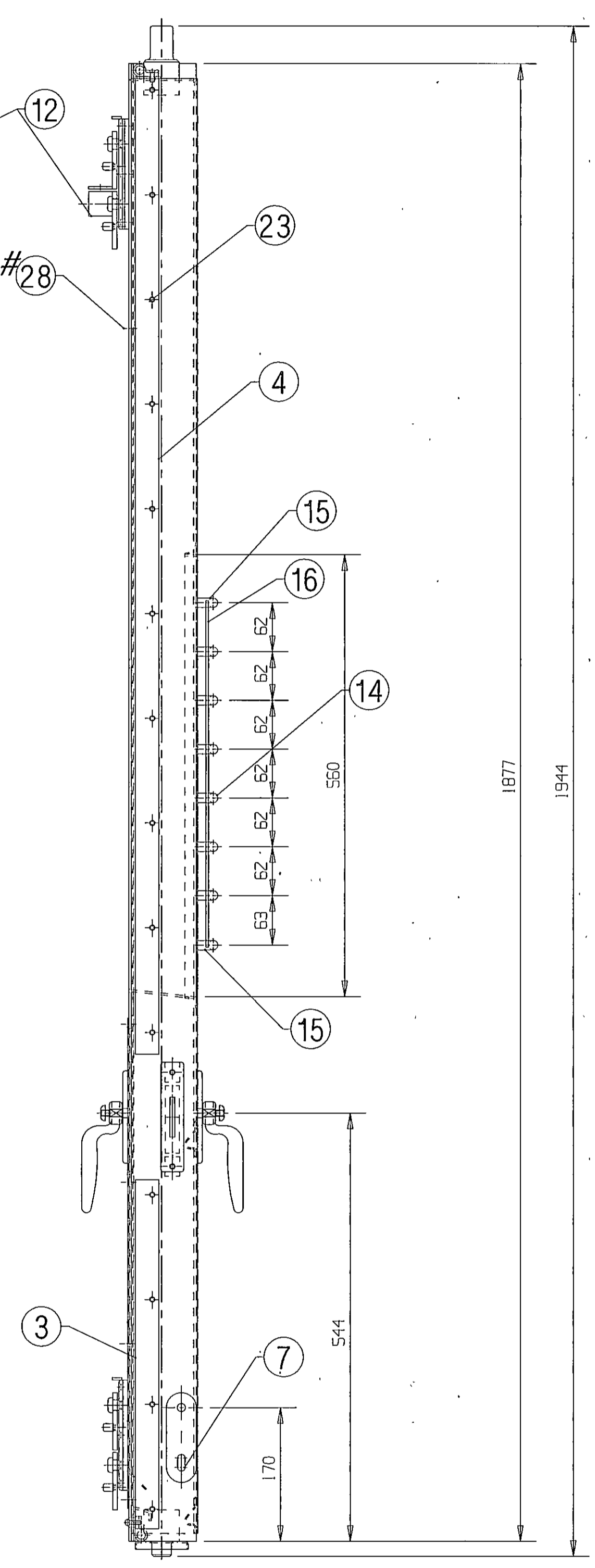
  
Agreed By



VIEW FROM OUTSIDE



VIEW FROM INSIDE



VIEW FROM-Y

Enter  
Date

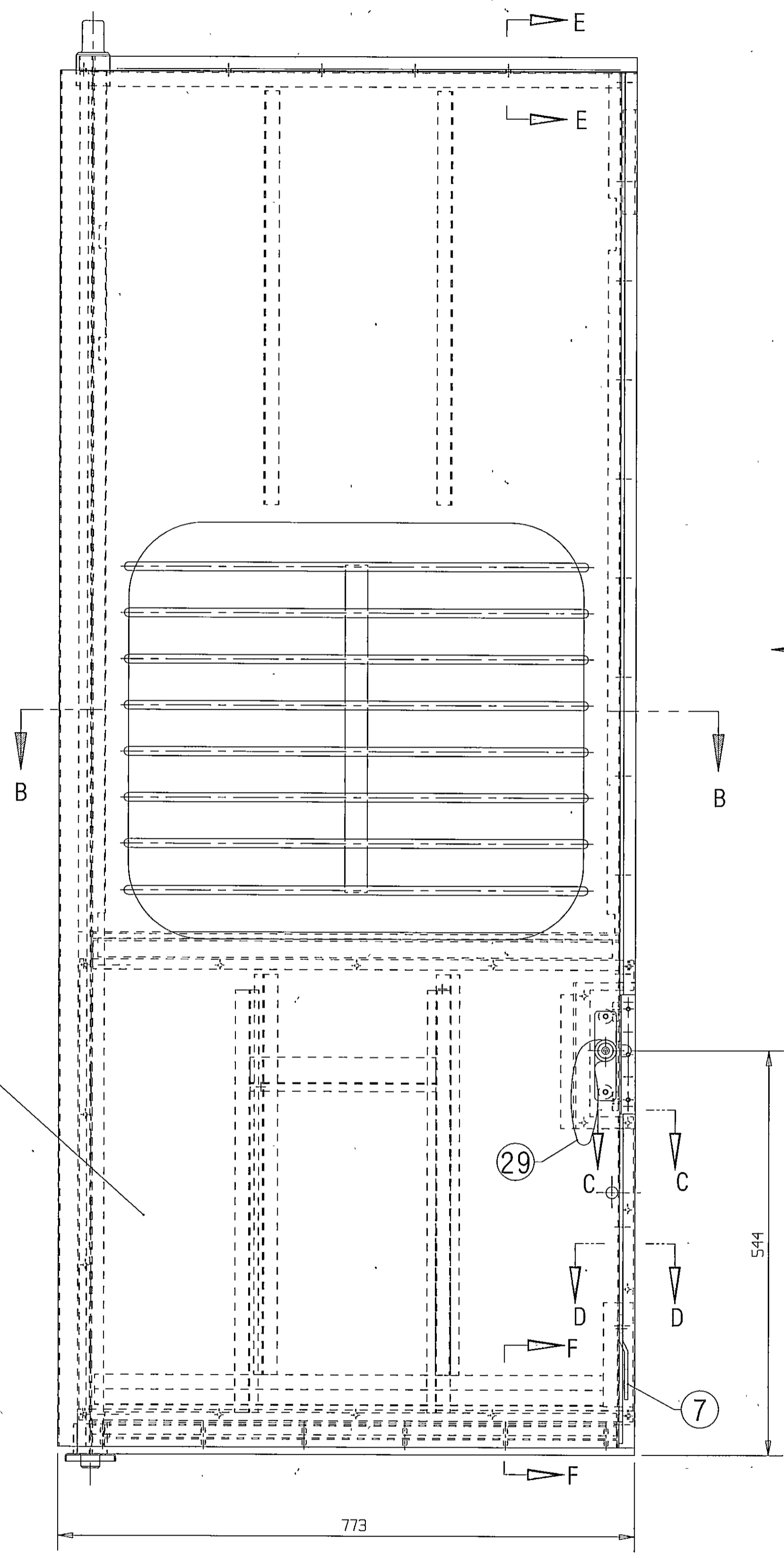
WELD LENGTH	ITEM	DESCRIPTION & DIMENSIONS	QPASSLY	DETAIL DRG	MATL. & SPEC.	REMARKS
NIL	M	GROUP BODY SIDE DOORS			SUPERSEDES: CC51005 ALT b	
WEIGHT	FILE	D:\HOME\PRKR\NAMEPLATE\CC51005s1c.prt (2d)				
55.000	KG					
S. AREA						
NIL	M <sup>2</sup>					
LENGTH/B+A						
NIL	M					
WIDTH/THICK.						
NIL	M					
HEIGHT						
NIL	M					

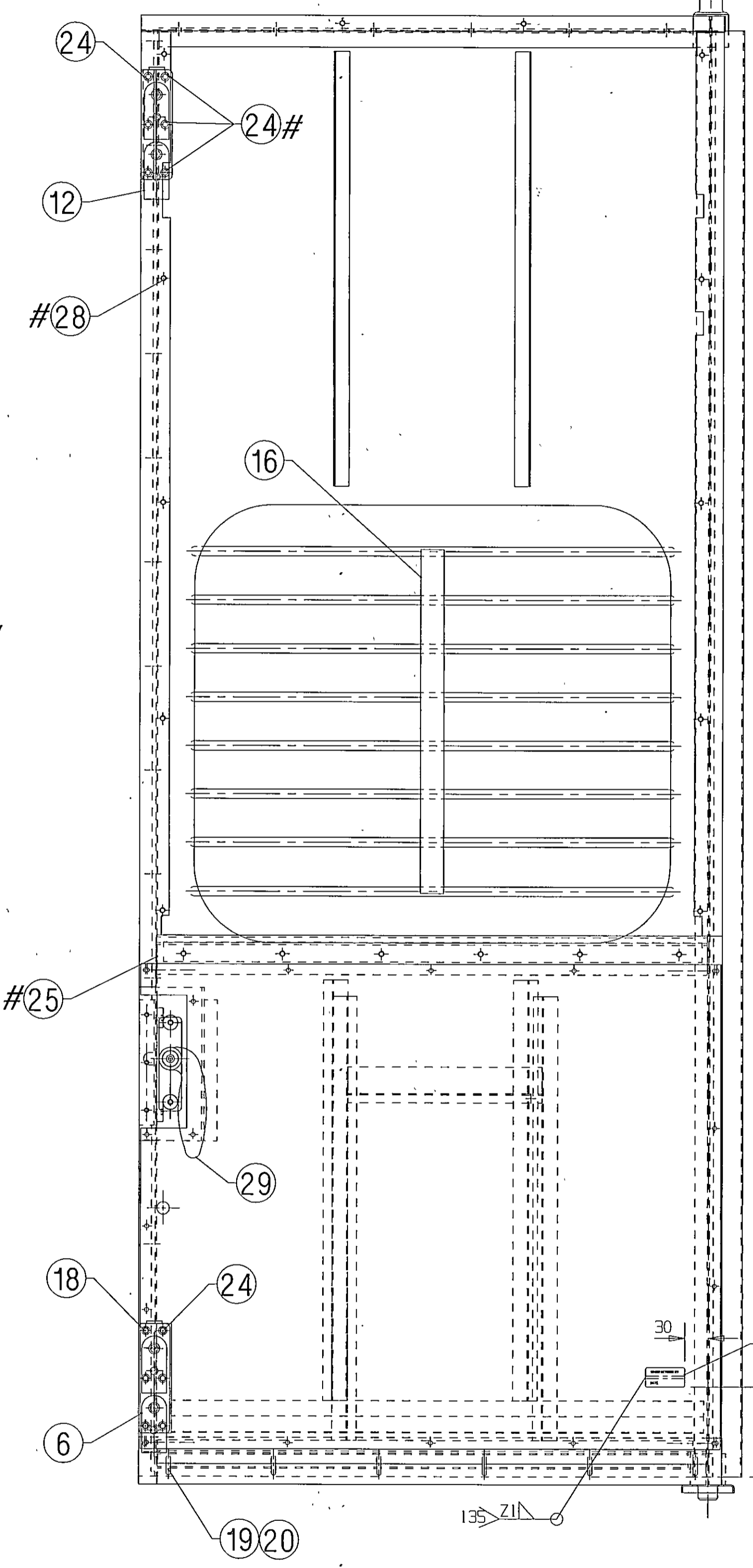
SCALE		SSE/REC	
1:5	CHD	PRKR	19/01/91
	DRN	PRKR	19/01/91
INDIAN RAILWAYS STANDARD		REF.DRG.No.	CC51005, ALT. - a
RAIL COACH FACTORY, KAPURTHALA		PL NO.	01050643
		DRG.NO.	CC51005
ALT.	c	SIZE	A   SHEET   1/2

ANY MANUAL ALTERATION SHALL AUTOMATICALLY RENDER THIS DRAWING INVALID.  
FOR UNTOLERANCED DIMENSIONS REFER MDG0008

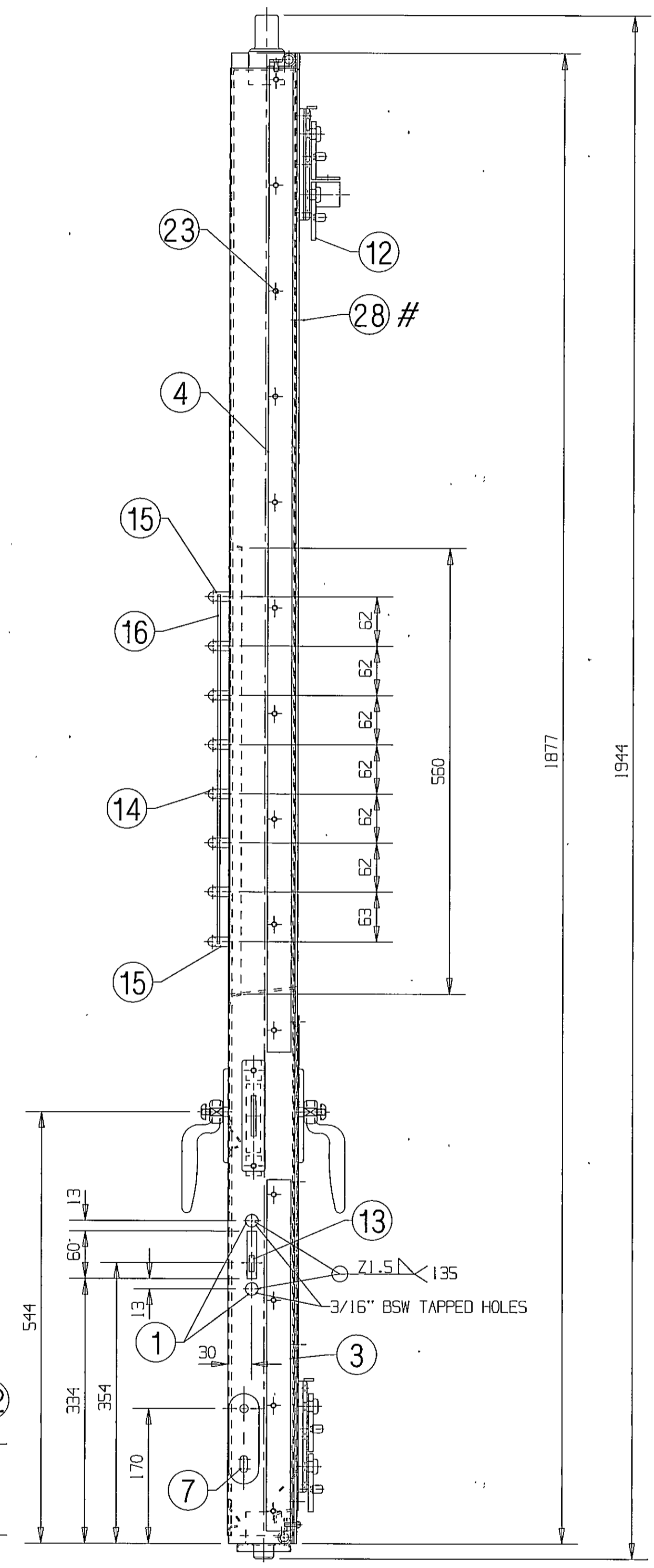
DETAIL DRGS STARTING WITH "LI" ARE INTERNAL REFERENCE LISTS ONLY AND ARE NOT FOR ISSUE.  
DATE OF FIRST ISSUE: 25/07/1991  
CGM BY: [Signature]



VIEW FROM OUTSIDE



VIEW FROM INSIDE



VIEW FROM -Y

अनुमति  
Enter  
में  
Into  
महिलाओं के  
Date 20-  
10/11/2015

WELD LENGTH	ITEM	DESCRIPTION & DIMENSIONS	Q/PASST	DETAIL DRG	MATL. & SPEC.	REMARKS
NIL	M	GROUP BODY SIDE DOORS				SUPERSEDES: CC51006 ALT c
WEIGHT	FILE	D:\HOME\PRKR\NAMEPLATE\CC51006S1.d.prt (2d)				
55.000	KG	OUTER DOOR ASSEMBLY(R.H.)				
S. AREA		(WITHOUT DOOR WINDOW)				
NIL	M <sup>2</sup>	RAIL COACH FACTORY, KAPURTHALA				
LENGTH/DIA		INDIAN RAILWAYS STANDARD				
NIL	M	REF.ORG.No. CC51006, ALT. -b				
WIDTH/THICK.		PL NO. 01050655				
NIL	M	DRG.NO. CC51006				
HEIGHT		ADE/SME /DY.CME				
NIL	M	CDE ALT. d SIZE A SHEET 1/2				

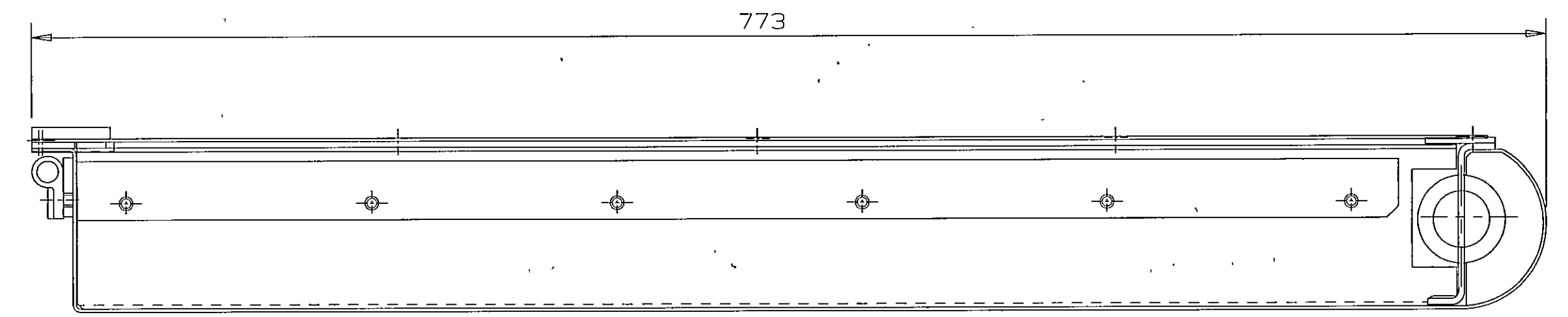
ANY MANUAL ALTERATION SHALL AUTOMATICALLY RENDER THIS DRAWING INVALID.

DETAIL DRGS STARTING WITH "LI" ARE INTERNAL REFERENCE LISTS ONLY AND ARE NOT FOR ISSUE.

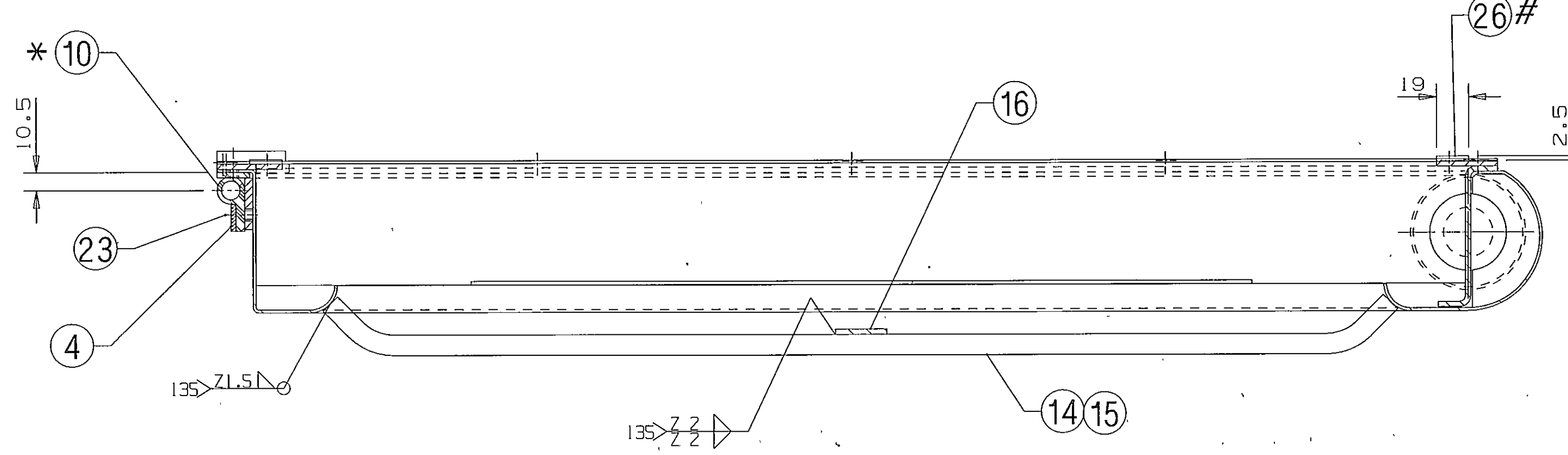
FOR UNTOLERANCED DIMENSIONS REFER MDG0008

DATE OF FIRST ISSUE 25/07/1991

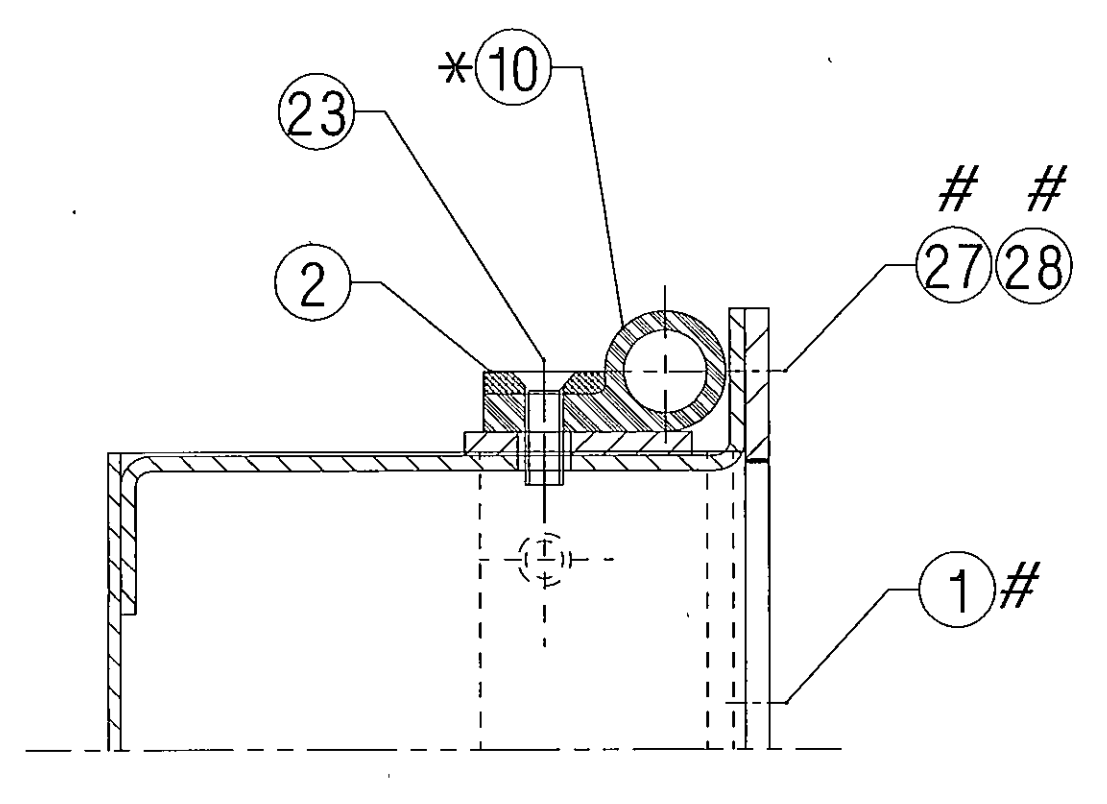
CGM BY



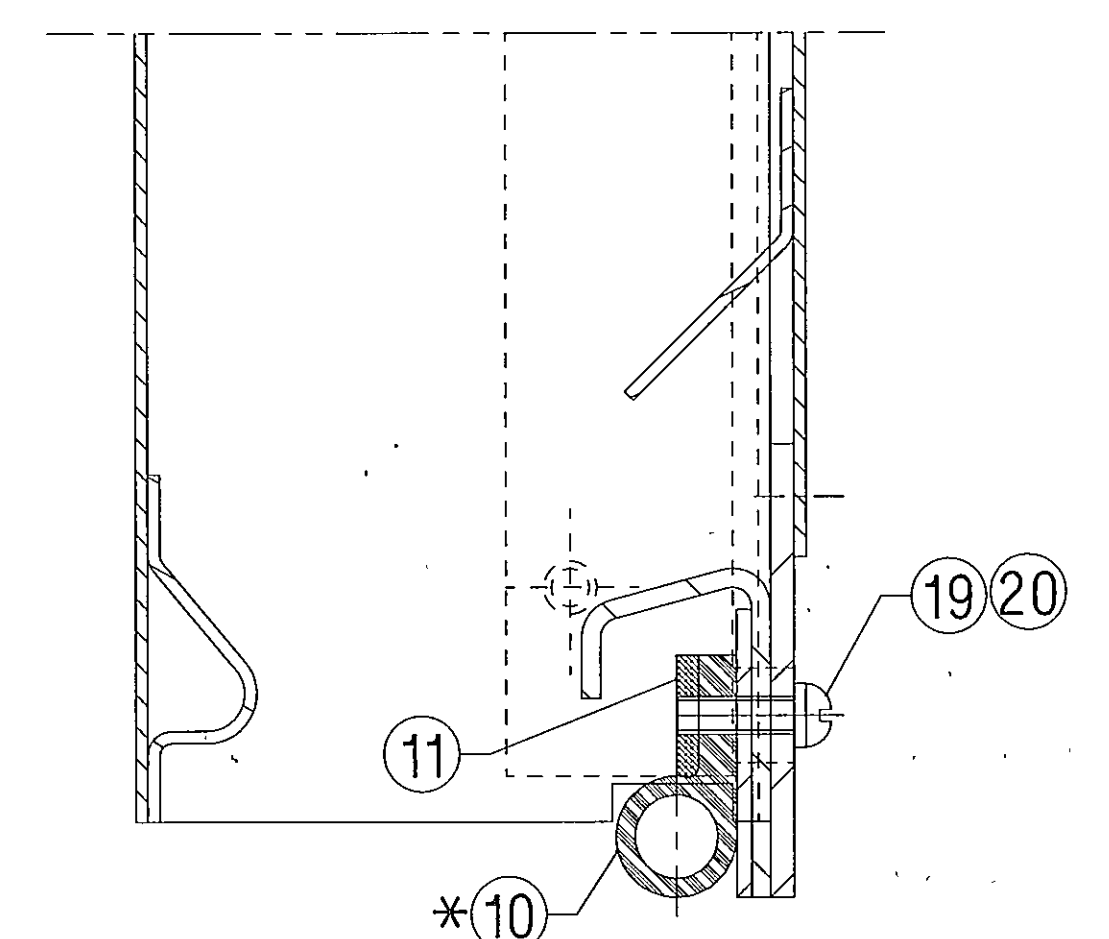
VIEW FROM-X



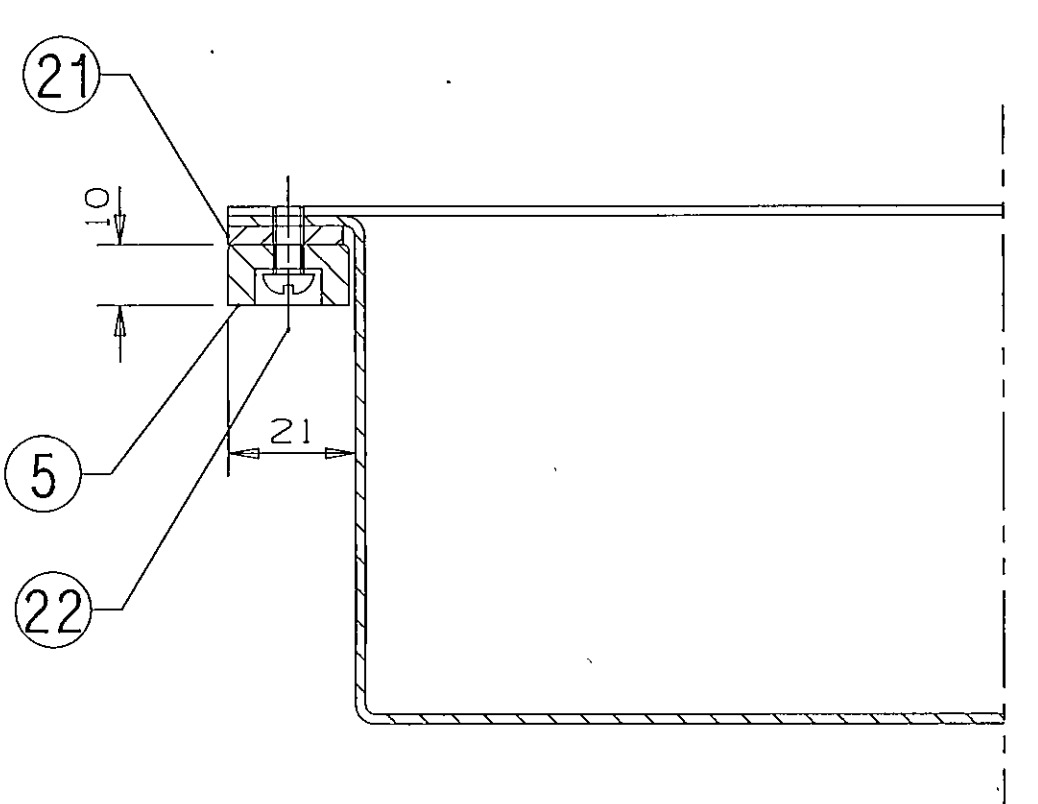
SECTION-BB



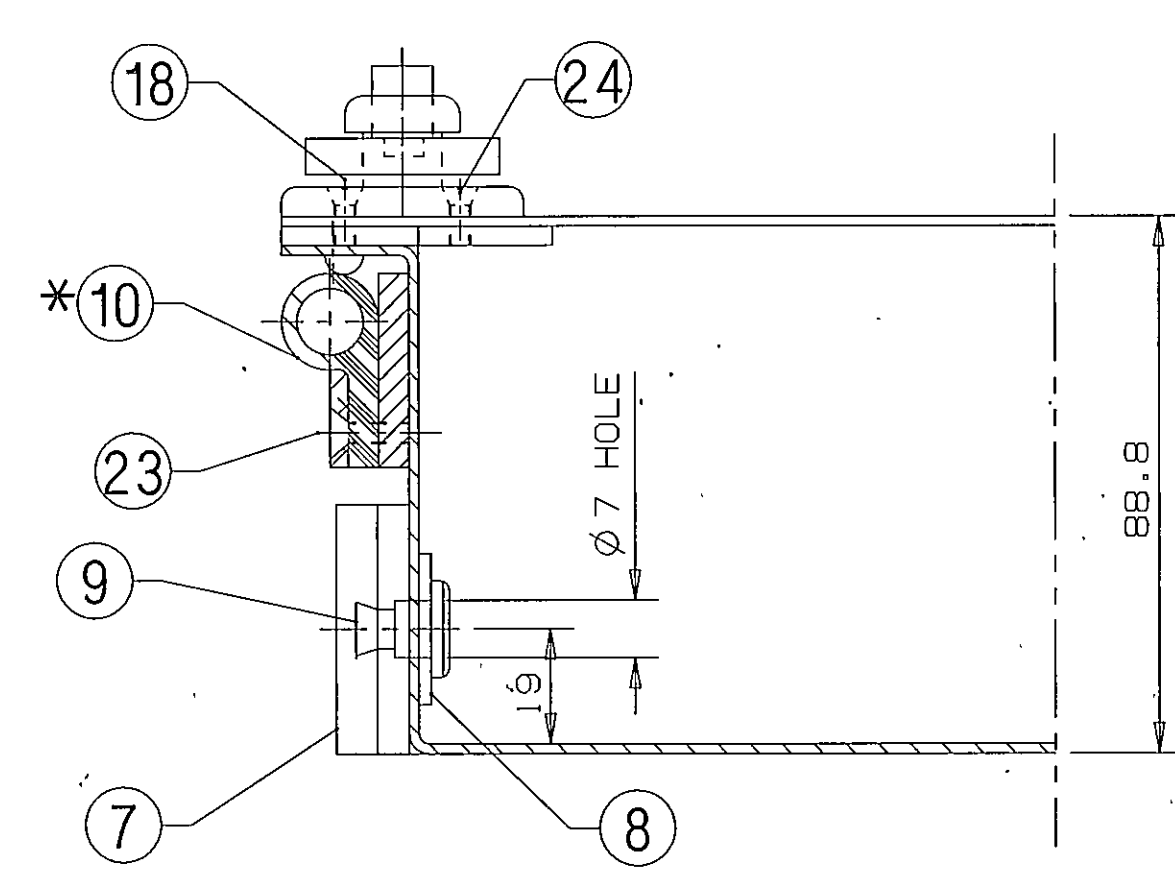
SECTION-EE



SECTION-FF



SECTION-CC



SECTION-DD

NOTE:

- ITEMS MARKED # THUS TO BE SUPPLIED LOOSE & FIXED ON COACH BY THE FURNISHING DIVISION DURING WINDOW MOUNTING.
- EXTERIOR OF DOOR PANEL ASSEMBLY SHALL BE WITHOUT BULGES OR DEPRESSION CONCAVITY OR CONVEXITY SHALL BE LIMITED TO 1.5mm IN A LENGTH OF 2.5m AND IN SIMILAR PROPORTIONS FOR SHORTER LENGTH.
- THE PHOSPHATE TREATMENT SHALL BE GIVEN TO THE DOOR ASSEMBLY AS PER IS: 3618-66 CLASS-B.
- FOR F.R.P. TISSUE TREATMENT ON OUTER DOOR ASSEMBLY TO BE REFERRED MTS064.
- \* 5. SUITABLE SIZE OF SEALING RUBBER TO BE CUT AS PER REQUIRED LENGTH TO SUIT IT'S SEAT MEMBER.

ALT.NO	ALT.DATE	ZONE	ALTERATIONS	AUTHORITY
b	17/05/2000	18	1. NOTE NO. 4 & 5 ADDED. 2. VIEW FROM-Y ADDED IN SHEET 1 OF 2. 3. SECTION-EE & SECTION-FF ADDED. 4. ITEM-30 REPLACED AS ITEM-1. 5. DRG. FORMAT REVISED WITH UG-11 DRAFTING. 6. ITEM-29 DELETED. 7. DESCRIPTION OF ITEM-18 WAS 'CSK HD. RIVET Ø6X25'. 8. MATL. SPECIFICATION OF HARDWARE ITEMS UPDATED. 9. QTY. OF ITEM-24 WAS 06.	DIC NO.MD000143
c	15/07/2005	1-10	1. ITEM-30 ADDED & CORRESPONDING VIEW REVISED.	DIC NO.MD050018

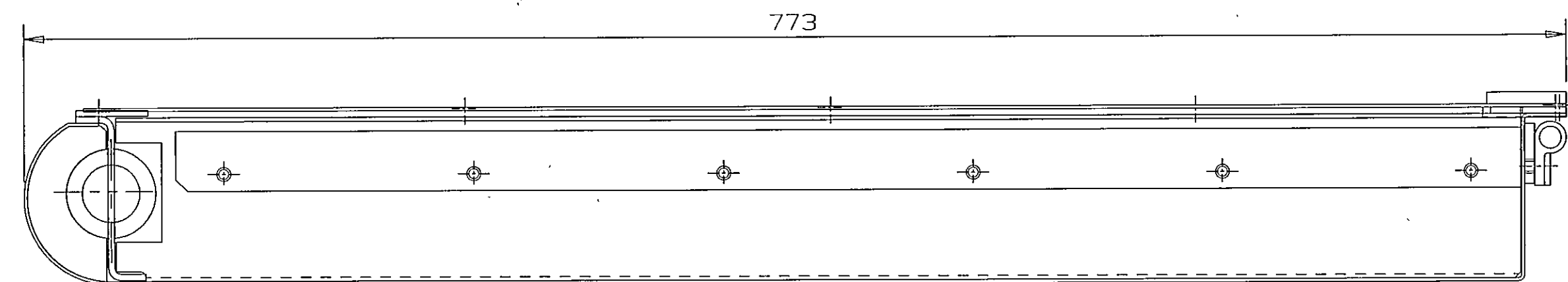
17/07/2005  
JUL 2005

ITEM	DESCRIPTION & DIMENSIONS	QTY	DETAIL DRG	MATL. & SPEC.	REMARKS
30	NAME PLATE	1	CC10929	NIL	NIL
29	CSK HD. SCREW-AM-6X20	03	NIL	IS: 1365-78	NIL
28	ANTI-PILFERAGE SPECIAL SCREW	04	CC54001	NIL	NIL
27	PACKING PIECE 2.5X19X711	01	NIL	IS: 2712-71 GR.C	KLINGERIT
26	PACKING PIECE 2.5X19X1193	02	NIL	IS: 2712-71 GR.C	KLINGERIT
25	PACKING PIECE 2.5X30X711	01	NIL	IS: 2712-71 GR.C	KLINGERIT
24	SLTD CSK HD SCREW 6X20	09	LIHW03	IS: 1365-1978	ITEM-17 COATING TO MTS 057
23	SLTD CSK HD SCREW 6X16	20	LIHW03	IS: 1365-1978	ITEM-12 COATING TO MTS 057
22	SLTD CHEESE HD SCREW 4X12	03	LIHW03	IS: 1365-1982 4.8,TAB-1	ITEM-1 COATING TO MTS 057
21	PLAIN ALLUMINIUM WASHER AS.5	03	LIHW09	IS: 2016-1967 TAB-2,TYPE-A	ITEM-3 COATING TO AC25
20	SLTD CHEESE HD SCREW 5X20	06	LIHW03	IS: 1365-1982 4.8,TAB-1	ITEM-6 COATING TO MTS 057
19	SPRING WASHER B6	06	LIHW09	IS: 3063-1994	ITEM-19 COATING TO MTS 057
18	SNAP HEAD RIVET 6X26	03	NIL	IS: 2155-82 TAB-1 & 4	NIL
17	DOOR FRAME ARRANGEMENT	01	CC51034	NIL	NIL
16	FLAT	01	CC14138	NIL	NIL
15	WINDOW BAR	02	CC14137	NIL	NIL
14	WINDOW BAR	06	CC14136	NIL	NIL
13	DOOR LOCK ASSEMBLY	01	T-5-1-109	NIL	COL.VI
12	SAFETY CATCH WITH LUG FOR PAD LOCKING OF BODY SIDE DOOR	01	CC51077	NIL	NIL
11	PACKING RAIL	01	CC51017	NIL	NIL
10	SEALING RUBBER	01	CC51016	NIL	NIL
9	PIN	01	CC51015	NIL	NIL
8	SQUARE WASHER	01	CC51014	NIL	NIL
7	LOCKING PLATE	01	CC51013	NIL	NIL
6	SAFETY CATCH	01	CC51012	NIL	NIL
5	DOOR STOP	01	CC51011	NIL	NIL
4	PACKING RAIL	01	CC51010	NIL	NIL
3	PACKING RAIL	01	CC51009	NIL	NIL
2	PACKING RAIL	01	CC51008	NIL	NIL
1	SLTD RSD HD CSK HD SCREW 6X20	12	LIHW03	IS: 8911-1978	ITEM-55 COATING TO MTS 057

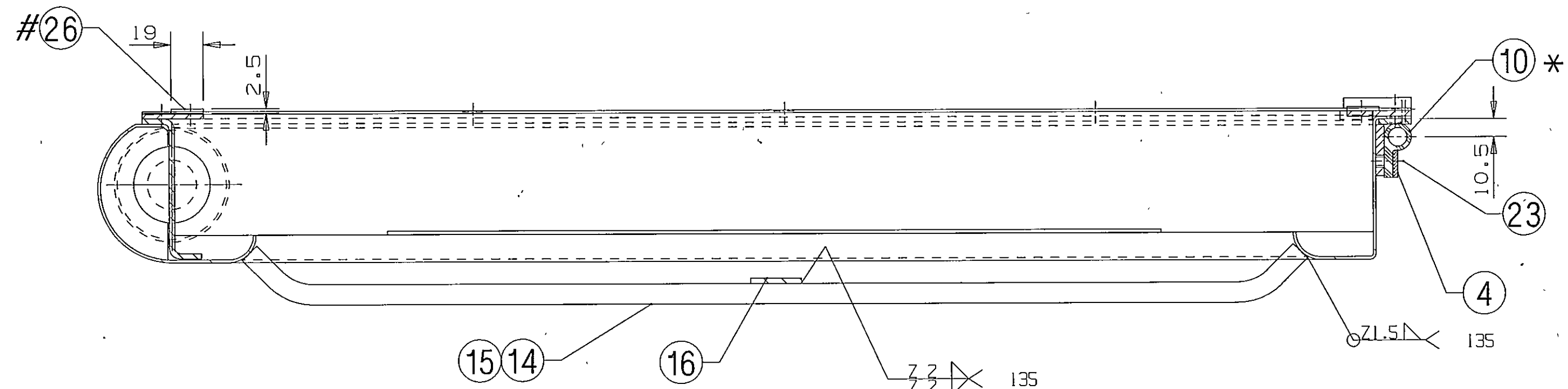
WELD LENGTH	ITEM	DESCRIPTION & DIMENSIONS	QTY	DETAIL DRG	MATL. & SPEC.	REMARKS
NIL	GROUP	BODY SIDE DOORS				SUPERSEDES: CC51005 ALT b
WEIGHT	FILE	D:\HOME\PRKR\NAMEPLATE\CC51005s2c.prt (2d)				
55.000	KG	OUTER DOOR ASSEMBLY(L.H.)				
S.AREA		(WITHOUT DOOR WINDOW)				
NIL	M <sup>2</sup>	RAIL COACH FACTORY, KAPURTHALA				
LENGTH/Ø/TA		INDIAN RAILWAYS STANDARD				
NIL	M	PL NO. 01050643				
WIDTH/THICK.		DRG.NO. CC51005				
NIL	M	REF.DRG.No. CC51005, ALT. - a				
HEIGHT		BY: CME				
NIL	M	DATE: 25/07/1991				

ANY MANUAL ALTERATION SHALL AUTOMATICALLY RENDER THIS DRAWING INVALID.      DETAIL DRGS STARTING WITH "LI" ARE INTERNAL REFERENCE LISTS ONLY AND ARE NOT FOR ISSUE.

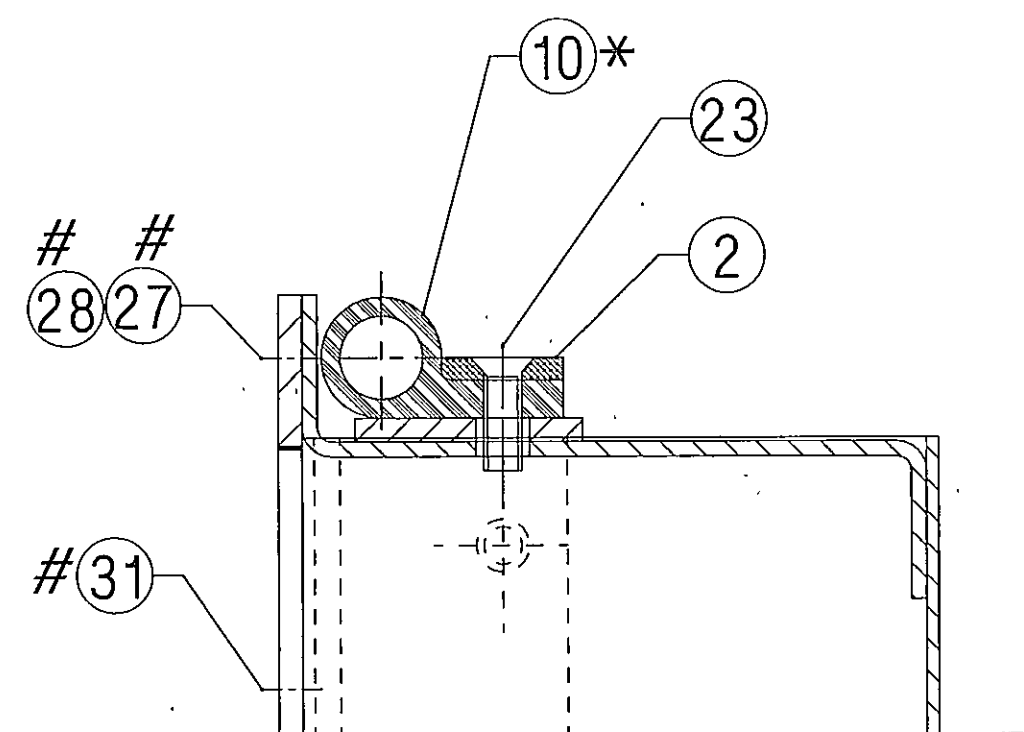
FOR UNTOLERANCED DIMENSIONS REFER MDG0008      DATE OF FIRST ISSUE      25/07/1991      CGM BY      [Signature]



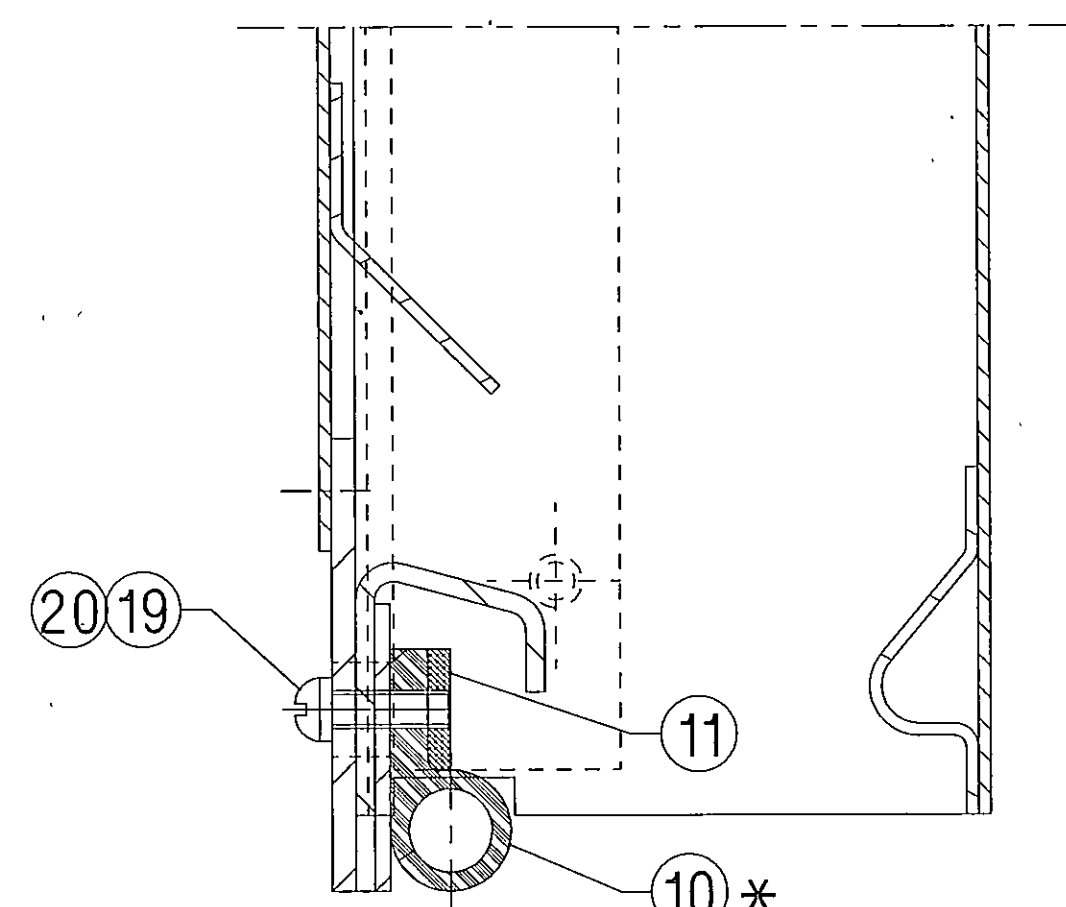
VIEW FROM-X



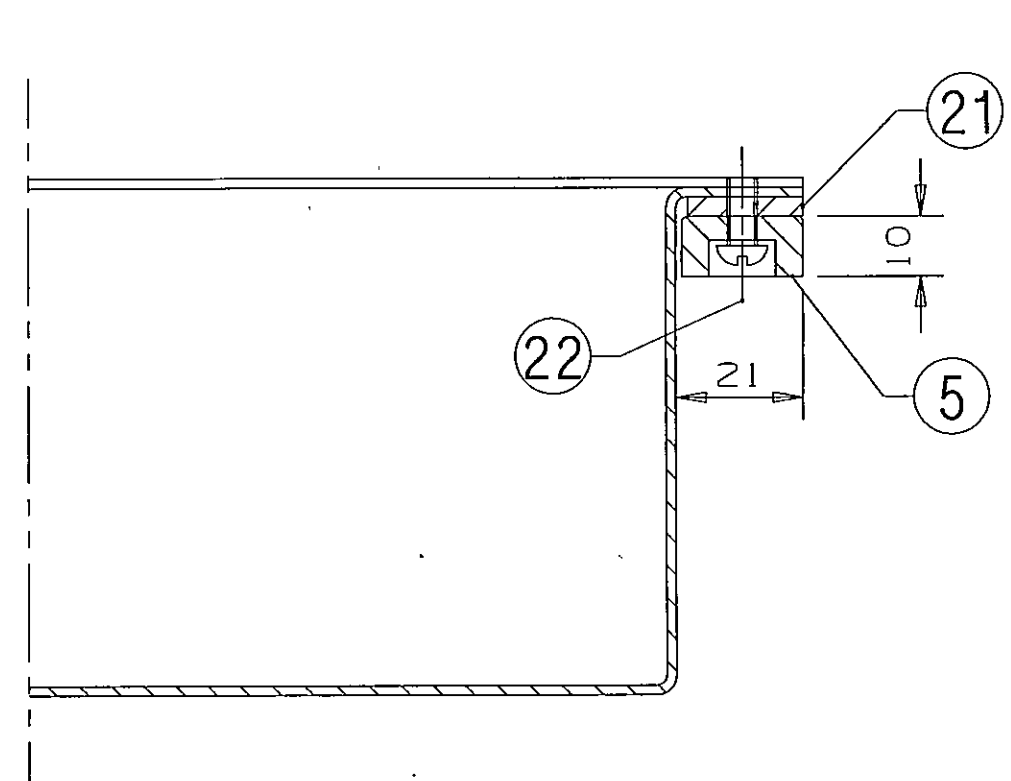
SECTION-BB



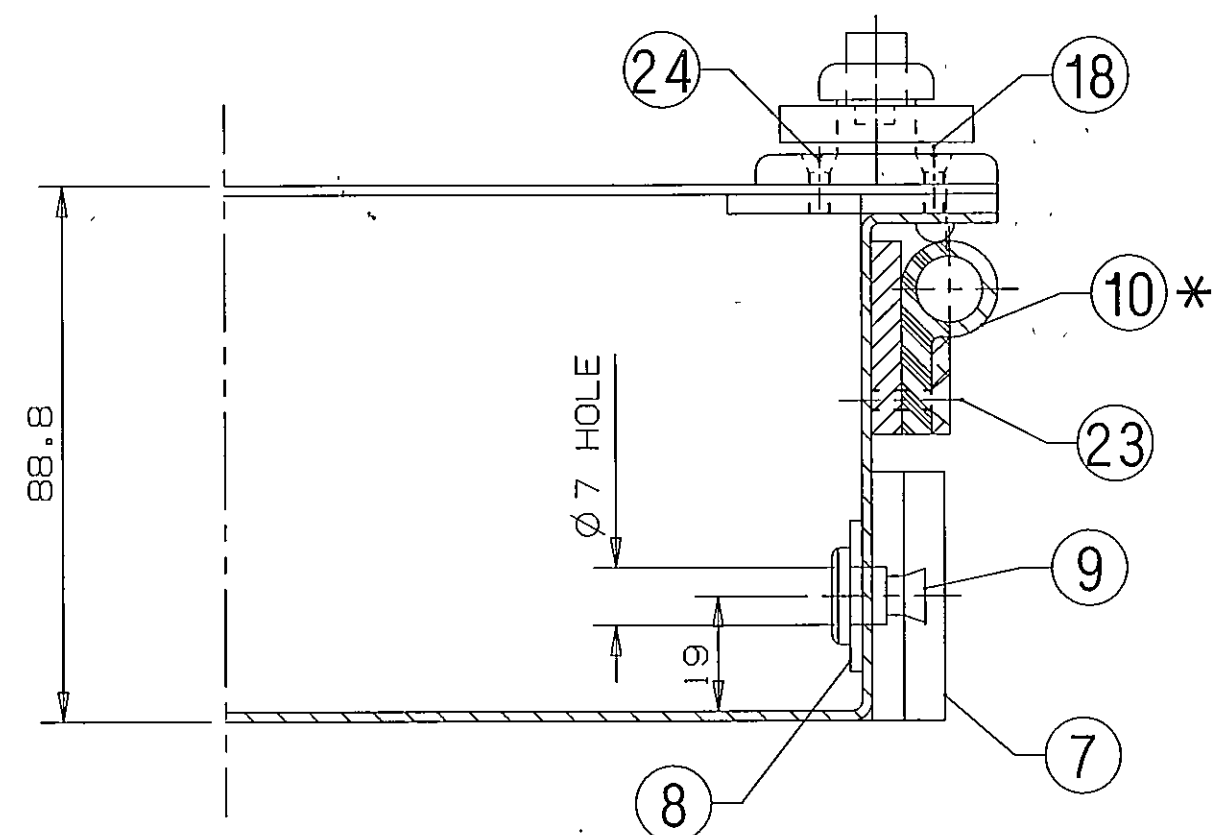
SECTION-EE



SECTION-FF



SECTION-CC



SECTION-DD

NOTE:

- ITEMS MARKED # THUS TO BE SUPPLIED LOOSE & FIXED ON COACH BY THE FURNISHING DIVISION DURING WINDOW MOUNTING.
- EXTERIOR OF DOOR PANEL ASSEMBLY SHALL BE WITHOUT BULGES OR DEPRESSION CONCAVITY OR CONVEXITY SHALL BE LIMITED TO 1.5mm IN A LENGTH OF 2.5m AND IN SIMILAR PROPORTIONS FOR SHORTER LENGTH.
- THE PHOSPHATE TREATMENT SHALL BE GIVEN TO THE DOOR ASSEMBLY AS PER IS: 3618-66 CLASS-B.
- FOR F.R.P. TISSUE TREATMENT ON OUTER DOOR ASSEMBLY PLEASE REFER 'MDS064'.
- \* 5. SUITABLE SIZE OF SEALING RUBBER TO BE CUT AS PER REQUIRED LENGTH TO SUIT IT'S SEAT MEMBER.

ALT. NO.	ALT. DATE	ZONE	ALTERATIONS	AUTHORITY
c	18/05/2000	18 114 63/67 E15 H16 F.6/18 NIL F17 113 H15	1. NOTE NO. 4 & 5 ADDED. 2. VIEW FROM-Y ADDED IN SHEET 1 OF 2. 3. SECTION-EE & SECTION-FF ADDED. 4. ITEM-30 DELETED. 5. DESCRIPTION OF ITEM-18 WAS 'CSK HD. RIVET Ø6X25'. 6. MATL. SPECIFICATION OF HARDWARE ITEMS UPDATED. 7. DRG. FORMAT REVISED WITH UG-11 DRAFTING & SECTION-AA DELETED. 8. QTY. OF ITEM-24 WAS 03. 9. DIMS. 354 & 170 ADDED IN SHEET 1 OF 2. 10. '3/16" BSW TAPPED HOLES' & WELDING SYMBOL ADDED IN SHEET 1 OF 2.	DIC NO.MD000143
d	15/07/2005	1-12	1. ITEM-32 IS ADDED & CORRESPONDING VIEW REVISED.	DIC NO.MD050018

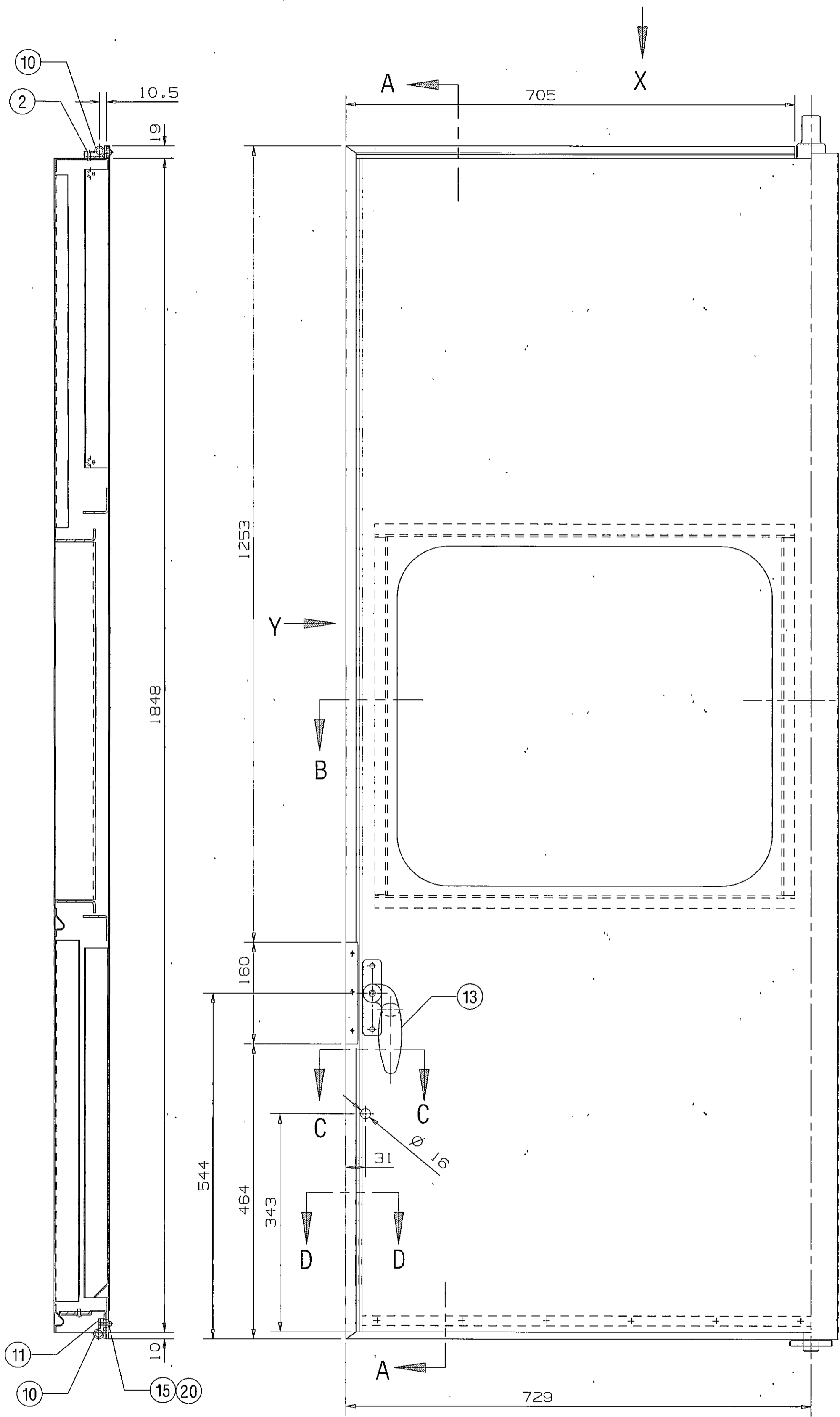
9771  
Ente  
#  
Into  
विविधता  
Date: 05/07/2005

ITEM	DESCRIPTION & DIMENSIONS	QTY	DETAIL DRG	MATL. & SPEC.	REMARKS
32	NAME PLATE	1	CC10929	NIL	NIL
31	SLTD RSD HD CSK HD SCREW MSX20	12	LIHW03	IS: 8911-1978	ITEM-55 COATING TO MDS 057
30	CSK HD. SCREW AM 6X20	03	NIL	IS: 1365-70	NIL
29	DOOR LOCK ASSEMBLY	01	T-5-1-109	NIL	COL. V I
28	ANTI-PILEFERAGE SPECIAL SCREW	04	CC54001	NIL	NIL
27	PACKING PIECE 2.5X19X711	01	NIL	IS: 2712-71 GR.C	KLINGERIT
26	PACKING PIECE 2.5X19X1193	02	NIL	IS: 2712-71 GR.C	KLINGERIT
25	PACKING PIECE 2.5X30X711	01	NIL	IS: 2712-71 GR.C	KLINGERIT
24	SLTD CSK HD SCREW 6X20	09	LIHW03	IS: 1365-1978	ITEM-17 COATING TO MDS 057
23	SLTD CSK HD SCREW MSX16	20	LIHW03	IS: 1365-1978	ITEM-12 COATING TO MDS 057
22	SLTD CHEESE HD SCREW 4X12	03	LIHW03	IS: 1366-1982 4.8, TAB-1	ITEM-1 COATING TO MDS 057
21	PLAIN ALLUMINIUM WASHER A5.5	03	LIHW09	IS: 2016-1967 TAB-2, TYPE-A	ITEM-3 COATING TO AC25
20	SLTD CHEESE HD SCREW 5X20	06	LIHW03	IS: 1366-1982 4.8, TAB-1	ITEM-6 COATING TO MDS 057
19	SPRING WASHER B6	06	LIHW09	IS: 3063-1994	ITEM-19 COATING TO MDS 057
18	SNAP HD. RIVET Ø6X26	03	NIL	IS: 2155-82 TAB-1 & 4	NIL
17	DOOR FRAME ARRANGEMENT	01	CC51035	NIL	NIL
16	FLAT	01	CC14138	NIL	NIL
15	WINDOW BAR	02	CC14137	NIL	NIL
14	WINDOW BAR	06	CC14136	NIL	NIL
13	GUARD'S LOCKING ARRANGEMENT	01	CC51019	NIL	NIL
12	SAFETY CATCH WITH LUG FOR PAD LOCKING OF BODY SIDE DOOR	01	CC51018	NIL	NIL
11	PACKING RAIL	01	CC51017	NIL	NIL
10	SEALING RUBBER	01	CC51016	NIL	NIL
9	PIN	01	CC51015	NIL	NIL
8	SQUARE WASHER	01	CC51014	NIL	NIL
7	LOCKING PLATE	01	CC51013	NIL	NIL
6	SAFETY CATCH	01	CC51012	NIL	NIL
5	DOOR STOP	01	CC51011	NIL	NIL
4	PACKING RAIL	01	CC51010	NIL	NIL
3	PACKING RAIL	01	CC51009	NIL	NIL
2	PACKING RAIL	01	CC51008	NIL	NIL
1	SCREWING PIECE	02	CC51007	NIL	NIL

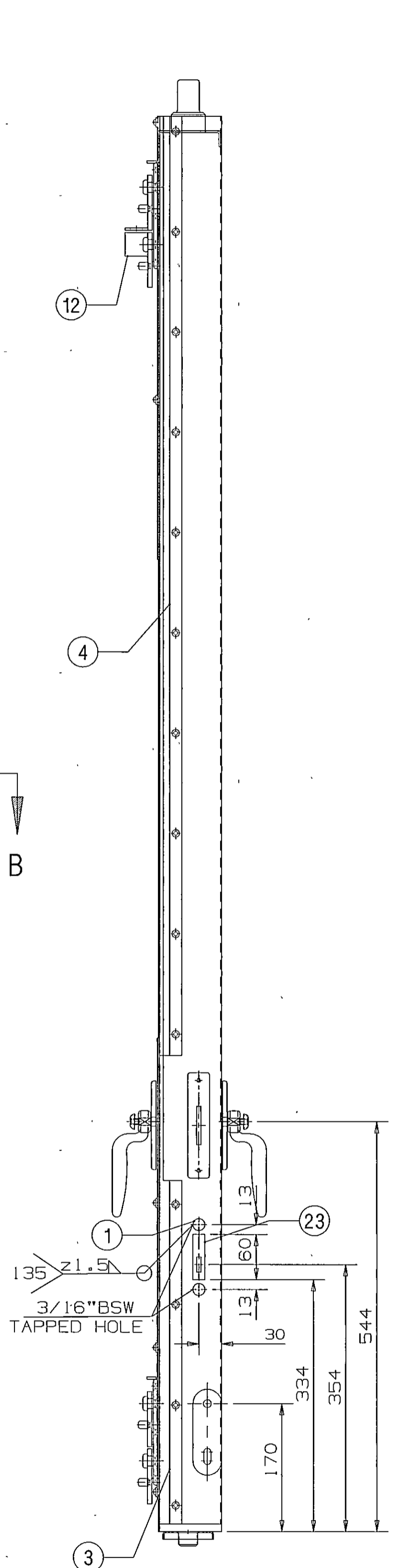
WELD LENGTH	ITEM	DESCRIPTION & DIMENSIONS	QTY	DETAIL DRG	MATL. & SPEC.	REMARKS
NIL	M	GROUP	BODY SIDE DOORS			
WEIGHT	FILE	D:\HOME\PRKR\NAMEPLATE\CC51006S2d.prt (2d)				
55.000	KG	SUPERSEDES: CC51006 ALT c				
S. AREA	OUTER DOOR ASSEMBLY(R.H.)					
NIL	M <sup>2</sup>	(WITHOUT DOOR WINDOW)				
LENGTH/DIA	RAIL COACH FACTORY, KAPURTHALA					
NIL	M	REF.DRG.No. CC51006, ALT. -b				
WIDTH/THICK.	INDIAN RAILWAYS STANDARD					
NIL	M	PL NO. 01050655				
HEIGHT	DRG.NO. CC51006					
NIL	M	SIZE A   SHEET 2/2				

ANY MANUAL ALTERATION SHALL AUTOMATICALLY RENDER THIS DRAWING INVALID. DETAIL DRGS STARTING WITH "LI" ARE INTERNAL REFERENCE LISTS ONLY AND ARE NOT FOR ISSUE.

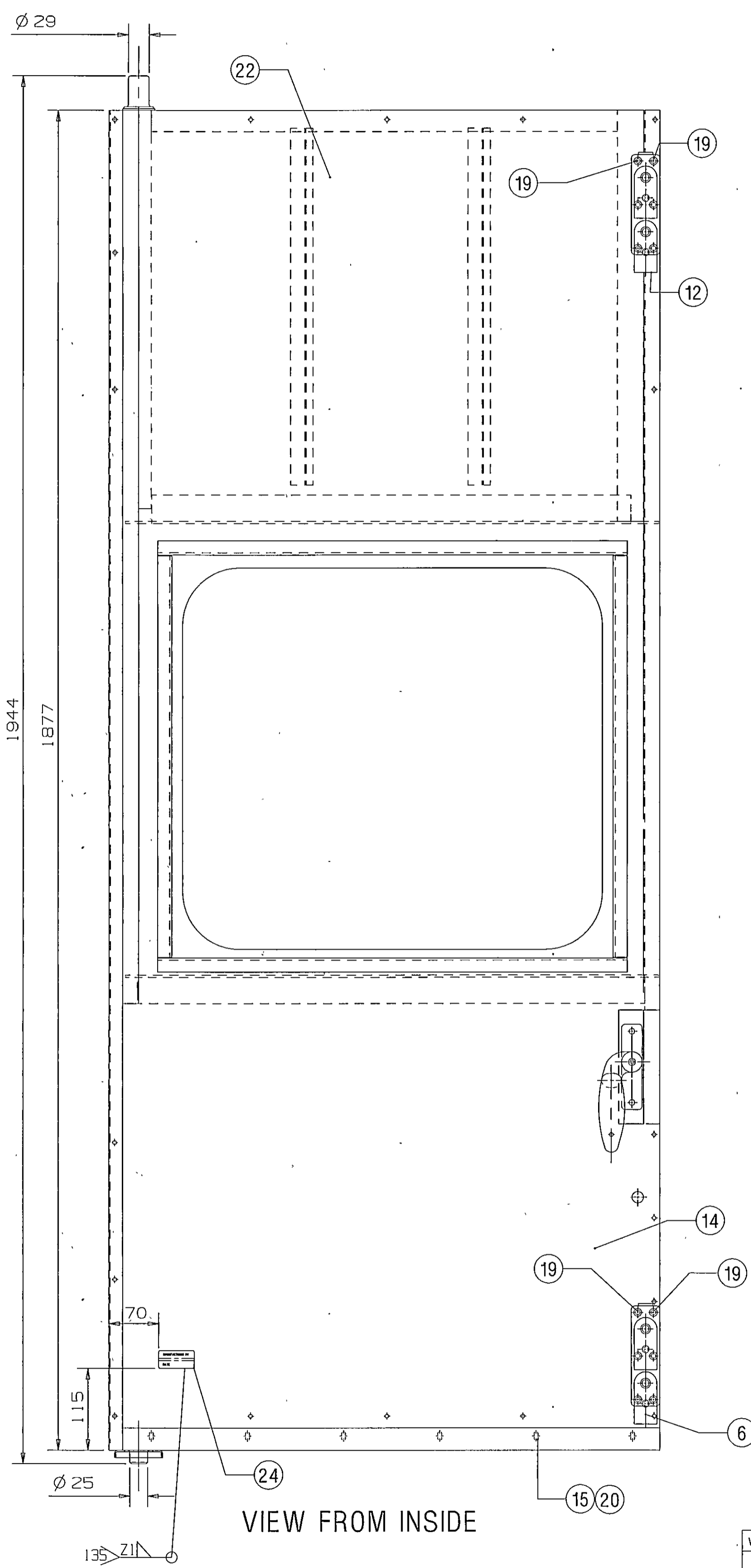




SECTION-AA  
VIEW FROM OUTSIDE



VIEW FROM-Y



VIEW FROM INSIDE

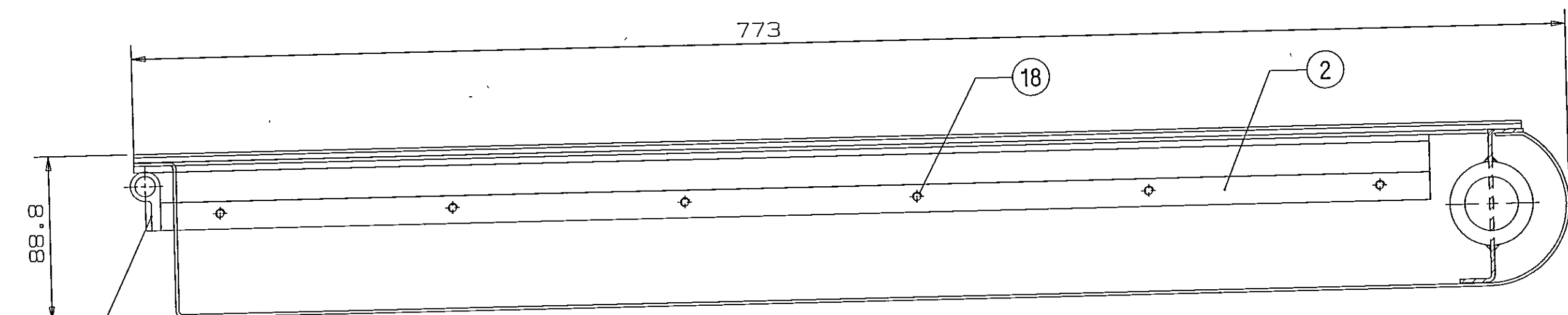
अनुमोदित  
Enter  
र  
Into  
मॉडिफिकेशन &  
Date Pln  
19 JUL 2005

ANY MANUAL ALTERATION SHALL AUTOMATICALLY RENDER THIS DRAWING INVALID.  
FOR UNTOLERANCED DIMENSIONS REFER MDG0008

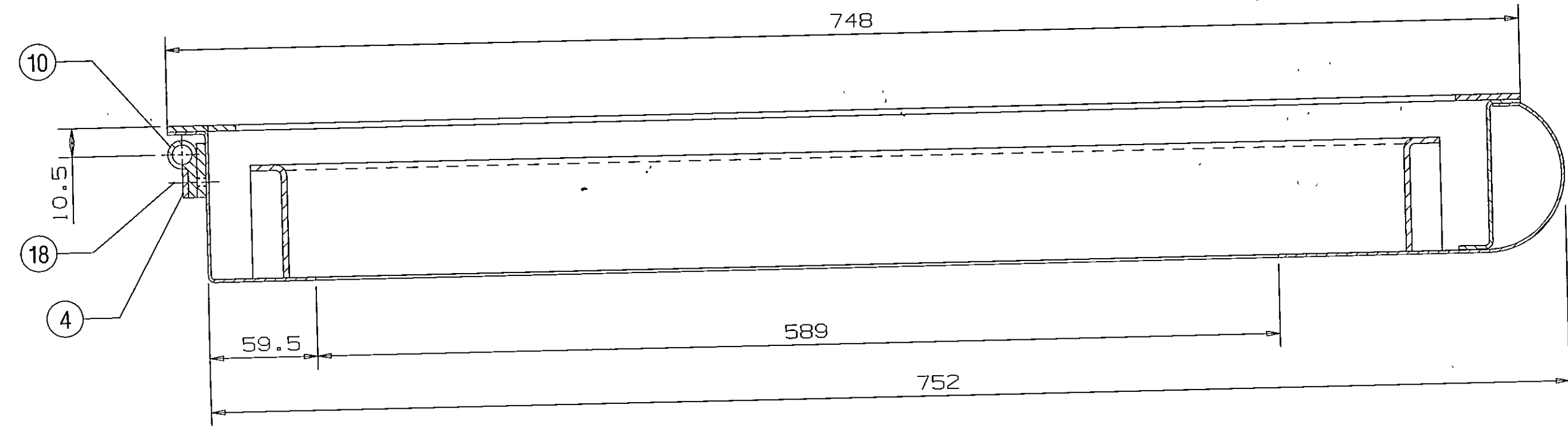
DETAIL DRGS STARTING WITH "LI" ARE INTERNAL REFERENCE LISTS ONLY AND ARE NOT FOR ISSUE.

DATE OF FIRST ISSUE 28/03/1995 CGM BY

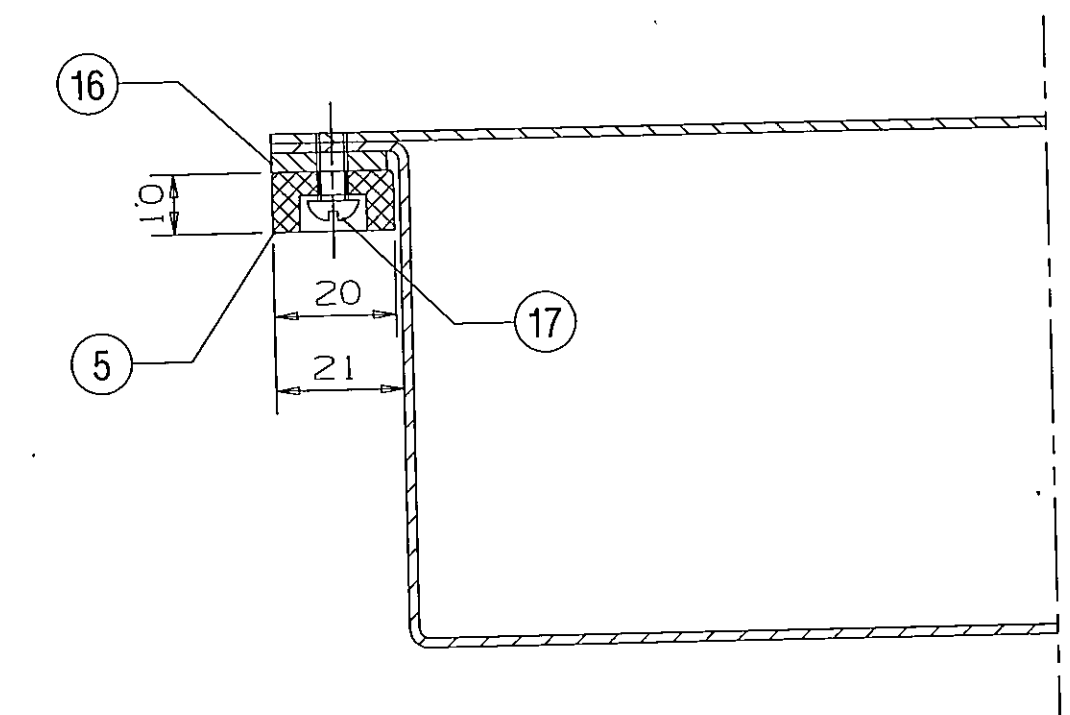
WELD LENGTH	ITEM	DESCRIPTION & DIMENSIONS	QPASSLY	DETAIL DRG	MATL. & SPEC.	REMARKS
NIL	M	GROUP BODY SIDE DOOR			SUPERSEDES: CC51111 ALT c	
WEIGHT	FILE	D:\HOME\PRKR\NAMEPLATE\CC51111sid.prt (2d)				
SS.000	KG	OUTER DOOR ASSEMBLY (L.H.)		SCALE	SSE/REC	19/7/05
S.AREA		FOR A.C. COACHES		1:5	CHD	RSSH LYL
NIL	M <sup>2</sup>	RAIL COACH FACTORY, KAPURTHALA		DRN	PRMO	RSSH
WIDTH/FH+OK.		INDIAN RAILWAYS STANDARD		REF.DRG.No.	CC51111	
NIL	M			PL NO.	01050692	
HEIGHT				DRG.NO.	CC51111	
NIL	M	ADE/SME	BY.CME	CDE	ALT.	SIZE A SHEET 1/2



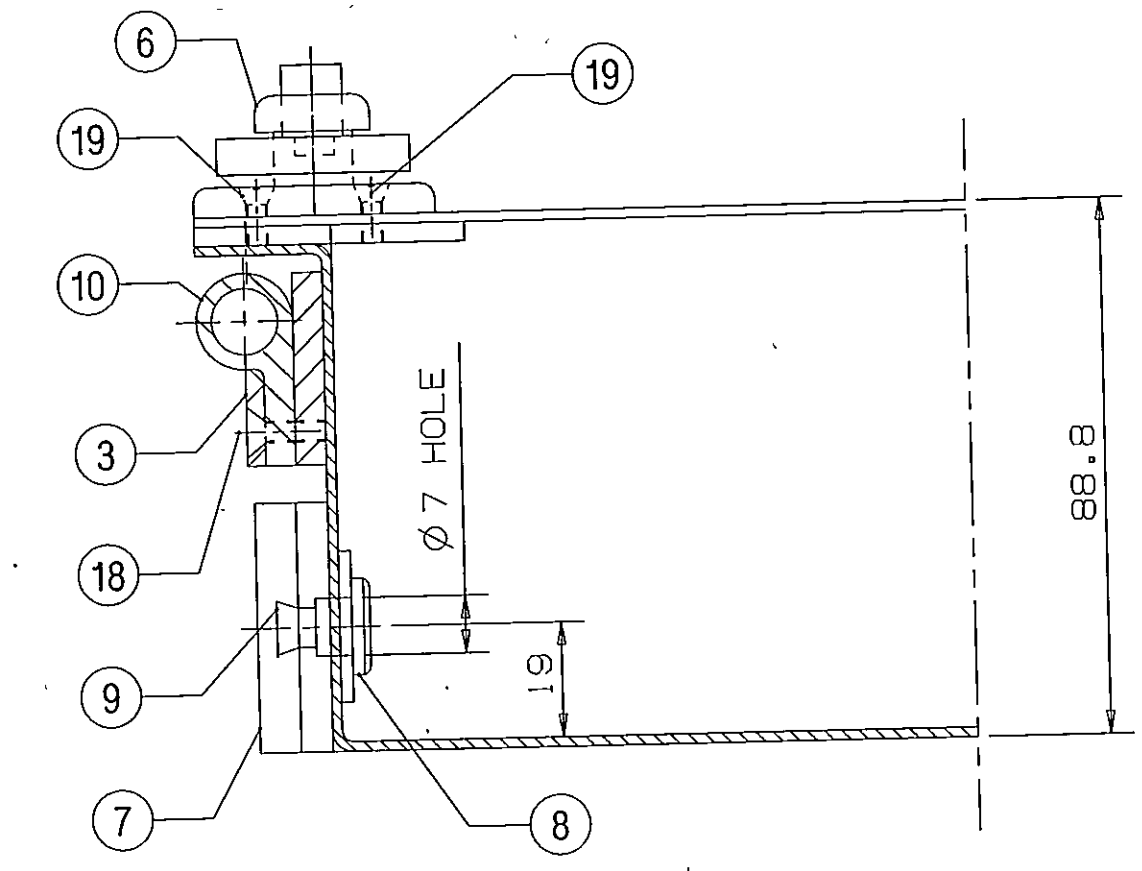
VIEW FROM-X



SECTION-BB



SECTION-CC



SECTION-DD

- NOTE :-
- ITEMS NO. 19 & 20 TO BE FIXED ON COACH BY THE FURNISHING DIVISION.
  - EXTERIOR OF DOOR PANEL ASSEMBLY SHALL BE WITHOUT BULGES OR DEPRESSION CONCAVITY OR CONVEXITY SHALL BE LIMITED TO 1.5mm IN A LENGTH OF 2.5m AND IN SIMILAR PROPORTIONS FOR SHORTER LENGTH.
  - THE PHOSPHATE TREATMENT SHALL BE GIVEN TO THE DOOR ASSEMBLY AS PER IS: 3618-66 CLASS-B.
  - ON INSIDE SURFACE OF OUTER DOOR ASSEMBLY, SURFACE TREATMENT INCLUDING F.R.P. TISSUE TREATMENT TO BE DONE AS PER 'MDTS064'.
  - ITEM NO. 10 TO BE CUT SUITABLY AS PER REQUIREMENT TO SUIT IT'S SEAT MEMBER.

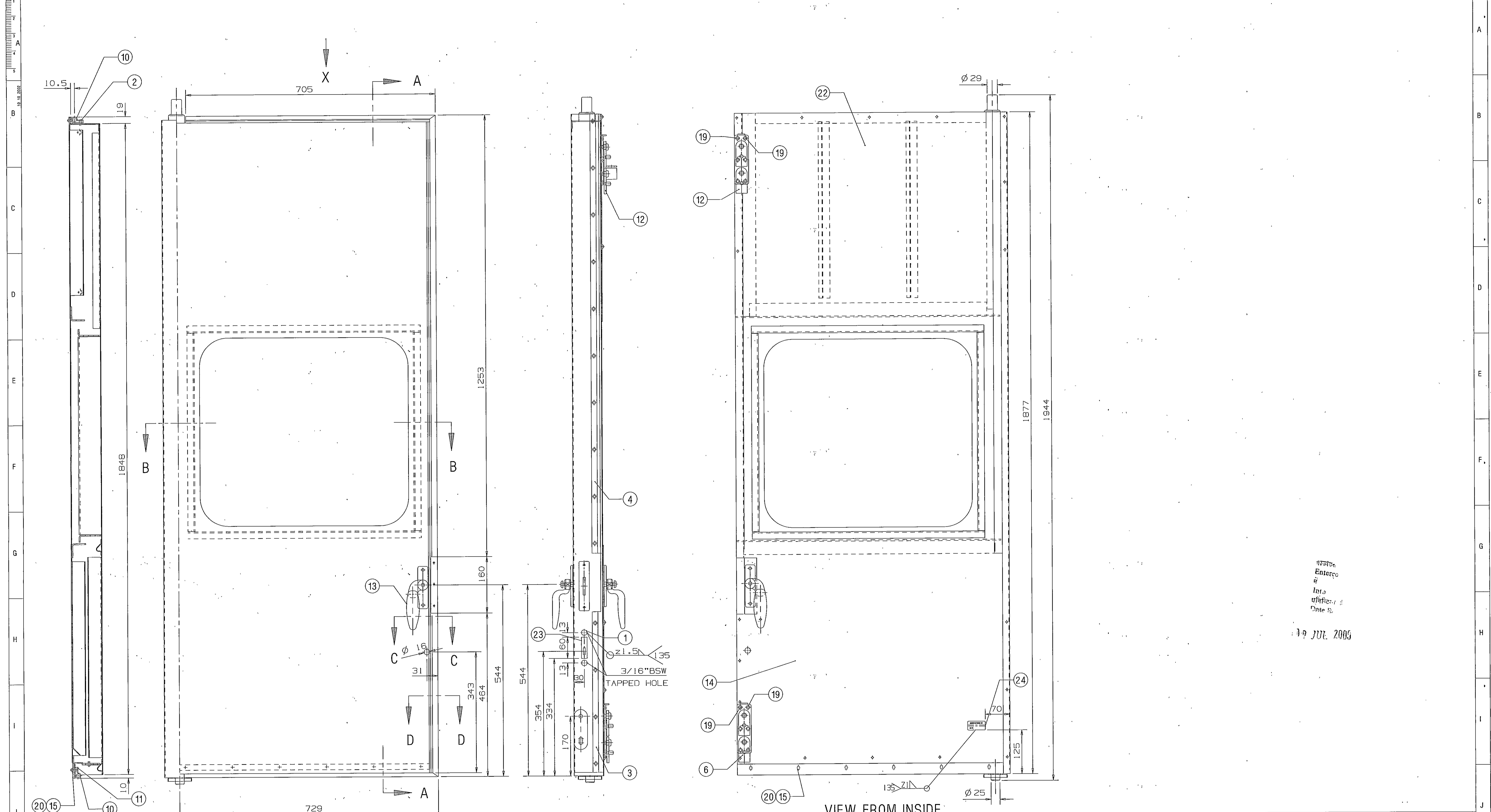
ALT. NO.	ALT. DATE	ZONE	ALTERATIONS	AUTHORITY
c	24/05/2000	K4	1. NOTE NO. 4 MODIFIED AND NOTE NO. 5 ADDED. 2. ITEM NO. 21 DELETED. 3. MADE VIEW CORRECTED. 4. DIMS. 589, 59.5 WERE 625, 41.5 RESPECTIVELY & SECTION-BB MODIFIED. 5. DRG. FORMAT REVISED WITH PL. NO. 6. NOTE NO. 1 CHANGED. 7. SIDE VIEW DELETED & VIEW FROM-Y ADDED. ASSLY (R.H.) FOR A.C. COACHES".	DIC NO. MD000143
d	15/07/2005	J12	1. ITEM-24 ADDED & CORRESPONDING VIEW REVISED.	DIC NO. MD050018

Entered  
Into  
Date 2005

ITEM	DESCRIPTION & DIMENSIONS	QTY	STANDARD	MATL. & SPEC.	REMARKS
24	NAME PLATE	1	CC10929	NIL	NIL
23	GUARD'S LOCKING ARRGT.	01	CC51019	NIL	NIL
22	INNER DOOR SHEET (L.H.)	01	CC51120	NIL	NIL
21	WINDOW FRAME	01	CC14211	NIL	NIL
20	SLTD CHEESE HD SCREW 5X20	06	LIHW03	IS: 1366-1982 4.8	ITEM-6 COATING TO MDS 057
19	SLTD CSK HD SCREW 6X20	12	LIHW03	IS: 1365-1978 4.8	ITEM-17 COATING TO MDS 057
18	SLTD CSK HD SCREW 6X16	20	LIHW03	IS: 1365-1978 4.8	ITEM-12 COATING TO MDS 057
17	SLTD CHEESE HD SCREW 4X12	30	LIHW03	IS: 1366-1982 4.8, TAB-1	ITEM-1 COATING TO MDS 057
16	PLAIN ALUMINIUM WASHER A4.5	30	LIHW09	IS: 2016-1967 TAB.2, TYPE-A	ITEM-2 COATING TO AC25
15	SPRING WASHER B5	06	LIHW09	IS: 3063-1994	ITEM-18 COATING TO MDS 057
14	DOOR FRAME ARRGT. (L.H.)	01	CC51110	NIL	NIL
13	DOOR LOCK ASSEMBLY	01	T-5-1-109	NIL	ALT K, COL. -V1
12	SAFETY CATCH WITH LUG L.H. FOR PAD LOCKING OF BODY SIDE DOOR	01	CC51077	NIL	NIL
11	PACKING RAIL	01	CC51017	NIL	NIL
10	SEALING RUBBER	01	CC51016	NIL	NIL
9	PIN	01	CC51015	NIL	NIL
8	SQUARE WASHER	01	CC51014	NIL	NIL
7	LOCKING PLATE	01	CC51013	NIL	NIL
6	SAFETY CATCH	01	CC51012	NIL	NIL
5	DOOR STOP	01	CC51011	NIL	NIL
4	PACKING RAIL	01	CC51010	NIL	NIL
3	PACKING RAIL	01	CC51009	NIL	NIL
2	PACKING RAIL	01	CC51008	NIL	NIL
1	SCREWING PIECE	02	CC51007	NIL	NIL

WELD LENGTH	NIL	ITEM	DESCRIPTION & DIMENSIONS	QTY	STANDARD	MATL. & SPEC.	REMARKS
WEIGHT	55.000 KG	GROUP	BODY SIDE DOOR	SUPERSEDES: CC51111 ALT c			
S. AREA	NIL	FILE	D:\HOME\PRKR\NAMEPLATE\CC51111s2d.prt (2d)				
LENGTH/DIA	NIL	OUTER DOOR ASSEMBLY (L.H.)					
WIDTH/THICK.	NIL	FOR A.C. COACHES					
HEIGHT	NIL	RAIL COACH FACTORY, KAPURTHALA					
INDIAN RAILWAYS STANDARD							REF DRG. NO. CC51111
PL NO. 01050692							DRG. NO. CC51111
DATE OF FIRST ISSUE: 28/03/1995							ALT. d SIZE A1 SHEET/2/2

ANY MANUAL ALTERATION SHALL AUTOMATICALLY RENDER THIS DRAWING INVALID.  
 FOR UNTOLERANCED DIMENSIONS REFER MDG0008  
 DATE OF FIRST ISSUE: 28/03/1995  
 CGM BY: [Signature]



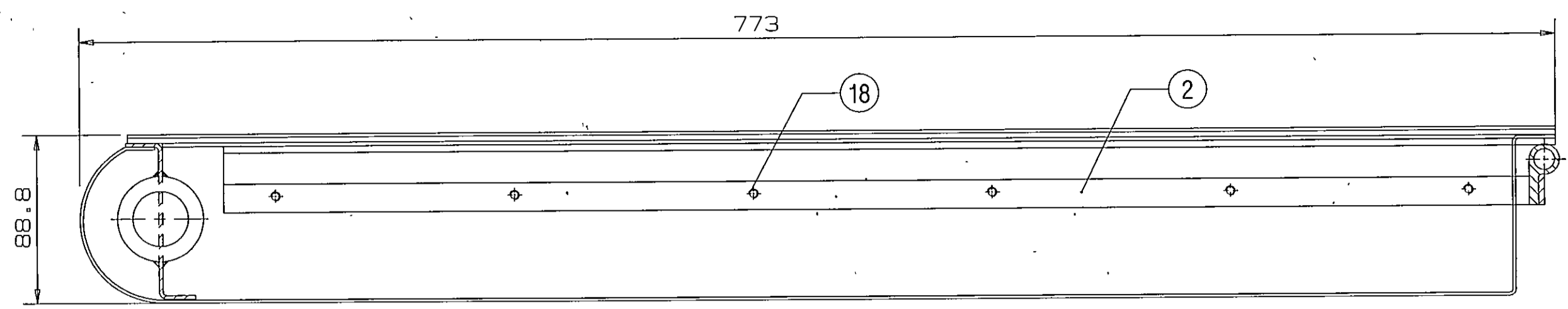
Enterce  
 Info  
 Date 20  
 30 JUL 2005

SECTION-AA

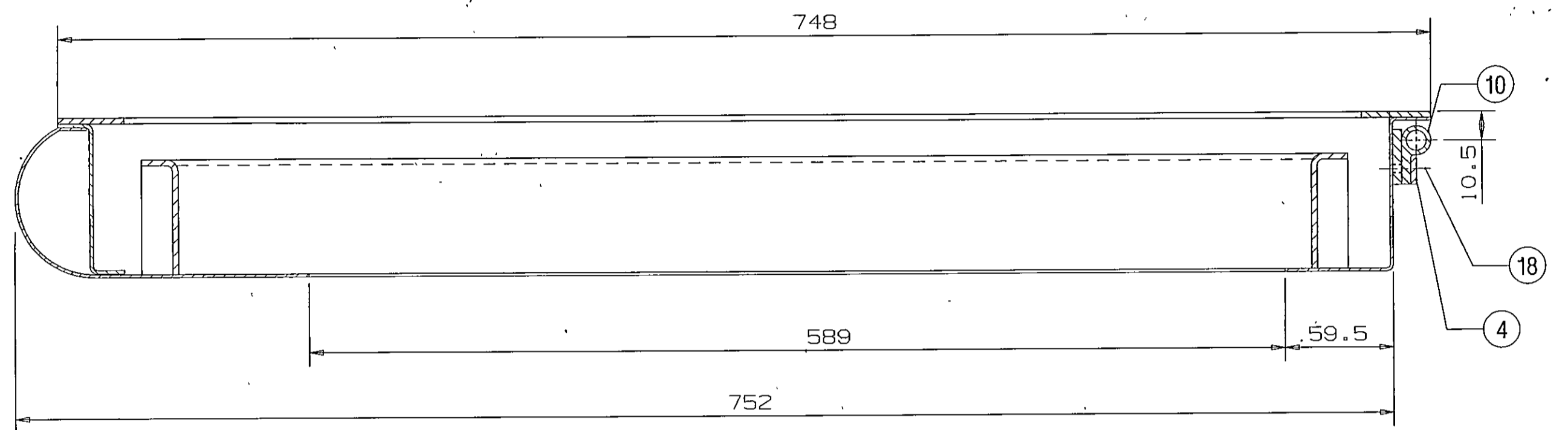
VIEW FROM OUTSIDE

VIEW FROM INSIDE

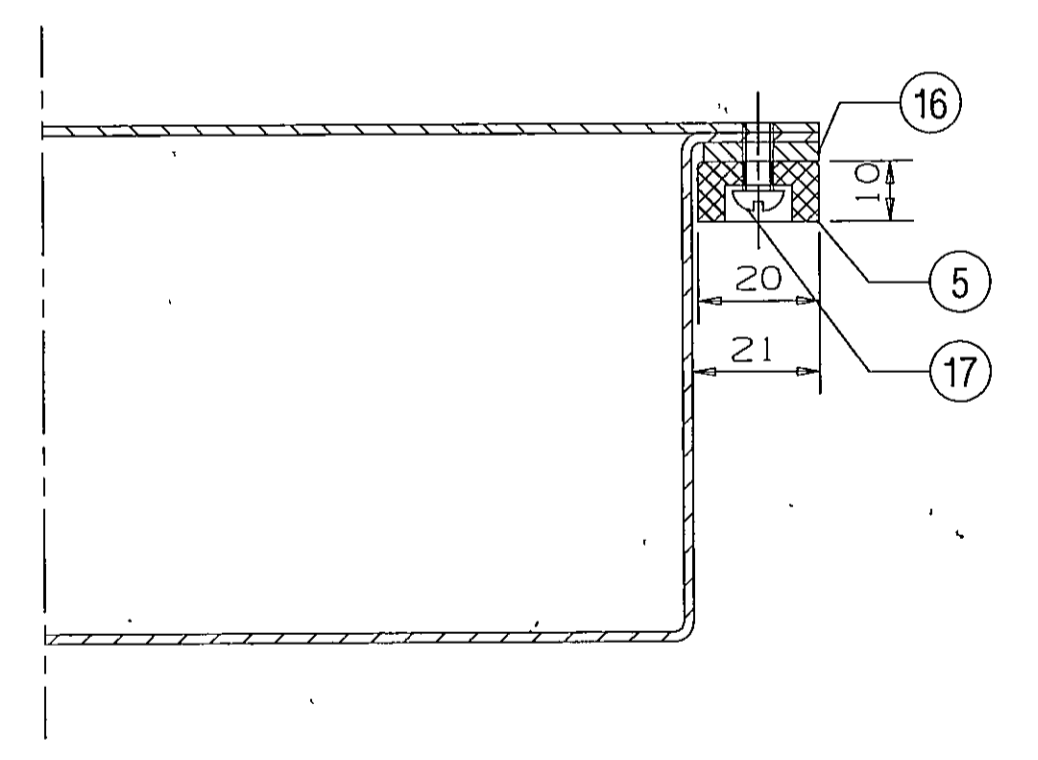
WELD LENGTH	ITEM	DESCRIPTION & DIMENSIONS	SPASSLY	DETAIL DRG	MATL. & SPEC.	REMARKS
NIL	M	GROUP	BODY SIDE DOOR		SUPERSEDES: CC51112 ALT c	
WEIGHT	FILE	D:\HOME\PRKR\NAMEPLATE\cc51112s1d.prt (2d)				
55.000	KG	OUTER DOOR ASSEMBLY (R.H.)				
S.AREA	M <sup>2</sup>	FOR A.C. COACHES				
NIL	M	RAIL COACH FACTORY, KAPURTHALA				
WIDTH/THICK.	M	INDIAN RAILWAYS STANDARD				
NIL	M	PL NO. 01050679				
HEIGHT	M	DRG.NO. CC51112				
NIL	M	REF.DRG No. CC51112				
ANY MANUAL ALTERATION SHALL AUTOMATICALLY RENDER THIS DRAWING INVALID.		DETAIL DRGS STARTING WITH "LI" ARE INTERNAL REFERENCE LISTS ONLY AND ARE NOT FOR ISSUE.				
FOR UNTOLERANCED DIMENSIONS REFER MDG0008		DATE OF FIRST ISSUE	28/03/1995	CGM BY	[Signature]	
				ADP/SME	BY.CME	CDE
				ALT. d		SIZE A1 SHEET 1/2



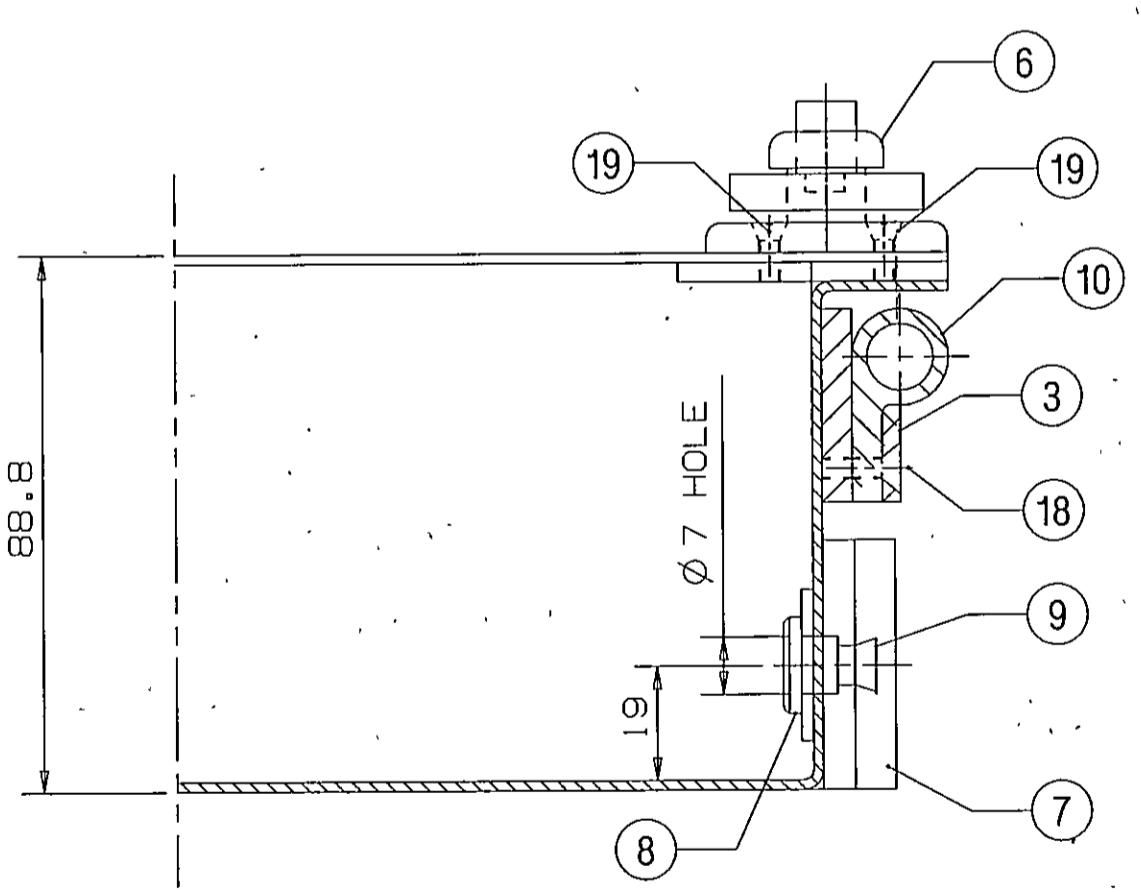
VIEW FROM-X



SECTION-BB



SECTION-CC



SECTION-DD

- NOTE :-
- ITEMS NO. 19 & 20 TO BE FIXED ON COACH BY THE FURNISHING DIVISION.
  - EXTERIOR OF DOOR PANEL ASSEMBLY SHALL BE WITHOUT BULGES OR DEPRESSION CONCAVITY OR CONVEXITY SHALL BE LIMITED TO 1.5mm IN A LENGTH OF 2.5m AND IN SIMILAR PROPORTIONS FOR SHORTER LENGTH.
  - THE PHOSPHATE TREATMENT SHALL BE GIVEN TO THE DOOR ASSEMBLY AS PER IS: 3618-66 CLASS-B.
  - ON INSIDE SURFACE OF OUTER DOOR ASSEMBLY, SURFACE TREATMENT INCLUDING F.R.P. TISSUE TREATMENT TO BE DONE AS PER 'MDTS064'.
  - ITEM NO. 10 TO BE CUT SUITABLY AS PER REQUIREMENT TO SUIT IT'S SEAT MEMBER.

ALT.NO	ALT.DATE	ZONE	ALTERATIONS	AUTHORITY
c	24/05/2000	K4	1. NOTE NO. 4 MODIFIED AND NOTE NO. 5 ADDED. 2. ITEM NO. 21 DELETED. 3. MATL. SPECN. UPDATED. 4. DIMS. 589,59.5 WERE 625,41.5 RESPECTIVELY & SECTION-BB MODIFIED. 5. DRG. FORMAT REVISED WITH PL. NO.ASSLY (R.H.) FOR A.C. COACHES. 6. NOTE NO. 1 CHANGED.	DIC NO. MDO00143
d	15/07/2005	J11	1. ITEM-24 ADDED & CORRESPONDING VIEW REVISED.	DIC NO. MDO50018

अनुमोदित  
Entire  
Date 15/07/2005

ITEM	DESCRIPTION & DIMENSIONS	QTY	DETAIL DRG	MATL. & SPEC.	REMARKS
24	NAME PLATE	1	CC10929	NIL	NIL
23	GUARD'S LOCKING ARRGT.	01	CC51019	NIL	NIL
22	INNER DOOR SHEET (R.H.)	01	CC51133	NIL	NIL
21	WINDOW FRAME	01	EE14211	NIL	NIL
20	SLTD CHEESE HD SCREW 5X20	06	L1HW03	IS: 1366-1982 4.8	ITEM-6 COATING TO MTS 057
19	SLTD CSK HD SCREW M6X20	12	L1HW03	IS: 1365-1978 4.8	ITEM-17 COATING TO MTS 057
18	SLTD CSK HD SCREW M5X16	20	L1HW03	IS: 1365-1978 4.8	ITEM-12 COATING TO MTS 057
17	SLTD CHEESE HD SCREW 4X12	30	L1HW03	IS: 1366-1982 4.8, TAB-1	ITEM-1 COATING TO MTS 057
16	PLAIN ALUMINIUM WASHER M4.5	30	L1HW09	IS: 2016-1967 TAB.2,TYPE-A	ITEM-2 COATING TO AC25
15	SPRING WASHER B5	06	L1HW09	IS: 3063-1994	ITEM-18 COATING TO MTS 057
14	DOOR FRAME ARRGT. (R.H.)	01	CC51113	NIL	NIL
13	DOOR LOCK ASSEMBLY	01	T-5-1-109	NIL	ALT K, COL. -V1
12	SAFETY CATCH WITH LUG R.H. FOR PAD LOCKING OF BODY SIDE DOOR	01	CC51018	NIL	NIL
11	PACKING RAIL	01	CC51017	NIL	NIL
10	SEALING RUBBER	01	CC51016	NIL	NIL
9	PIN	01	CC51015	NIL	NIL
8	SQUARE WASHER	01	CC51014	NIL	NIL
7	LOCKING PLATE	01	CC51013	NIL	NIL
6	SAFETY CATCH	01	CC51012	NIL	NIL
5	DOOR STOP	01	CC51011	NIL	NIL
4	PACKING RAIL	01	CC51010	NIL	NIL
3	PACKING RAIL	01	CC51009	NIL	NIL
2	PACKING RAIL	01	CC51008	NIL	NIL
1	SCREWING PIECE	02	CC51007	NIL	NIL

WELD LENGTH	NIL	ITEM	GROUP	DESCRIPTION & DIMENSIONS	QTY	DETAIL DRG	MATL. & SPEC.	REMARKS
WEIGHT	NIL	FILE	D:\HOME\PRKR\NAMEPLATE	cc51112s2d.prt (2d)	SUPERSEDES: CC51112 ALT c			
55,000 KG S.AREA	SCALE			SSE/REC		1:5 CHD RSN 4/2		
NIL M <sup>2</sup>	FOR A.C. COACHES			DRN		PRK 4/2		
LENGTH/DIA	RAIL COACH FACTORY, KAPURTHALA			REF.DRG.No.		CC51112		
WIDTH/THICK.	INDIAN RAILWAYS STANDARD			PL NO.		01050679		
NIL M	DRG.NO.			CC51112				
HEIGHT	ADE/SME			DY.CME		CDE		
NIL M	ALT.			J		SIZE/A SHEET/2/2		

ANY MANUAL ALTERATION SHALL AUTOMATICALLY RENDER THIS DRAWING INVALID. DETAIL DRGS STARTING WITH "LI" ARE INTERNAL REFERENCE LISTS ONLY AND ARE NOT FOR ISSUE.

FOR UNTOLERANCED DIMENSIONS REFER MDG0008 DATE OF FIRST ISSUE 28/03/1995 CGM BY