

**Complete set of items for 7 TR RMPU to make compatible for LHB FAC Coach with Flat Roof Design to layout drawing No. LA90036, Alt. 'Nil'**

This document is being issued to develop Roof Mounted AC Package Unit (7TR) for LHB FAC Coach as per RDSO Specification No. RDSO/PE/SPEC/AC/0061,-2005, Rev.'1', compatible with Flat Roof Design.

Scope of supply shall includes the following items.

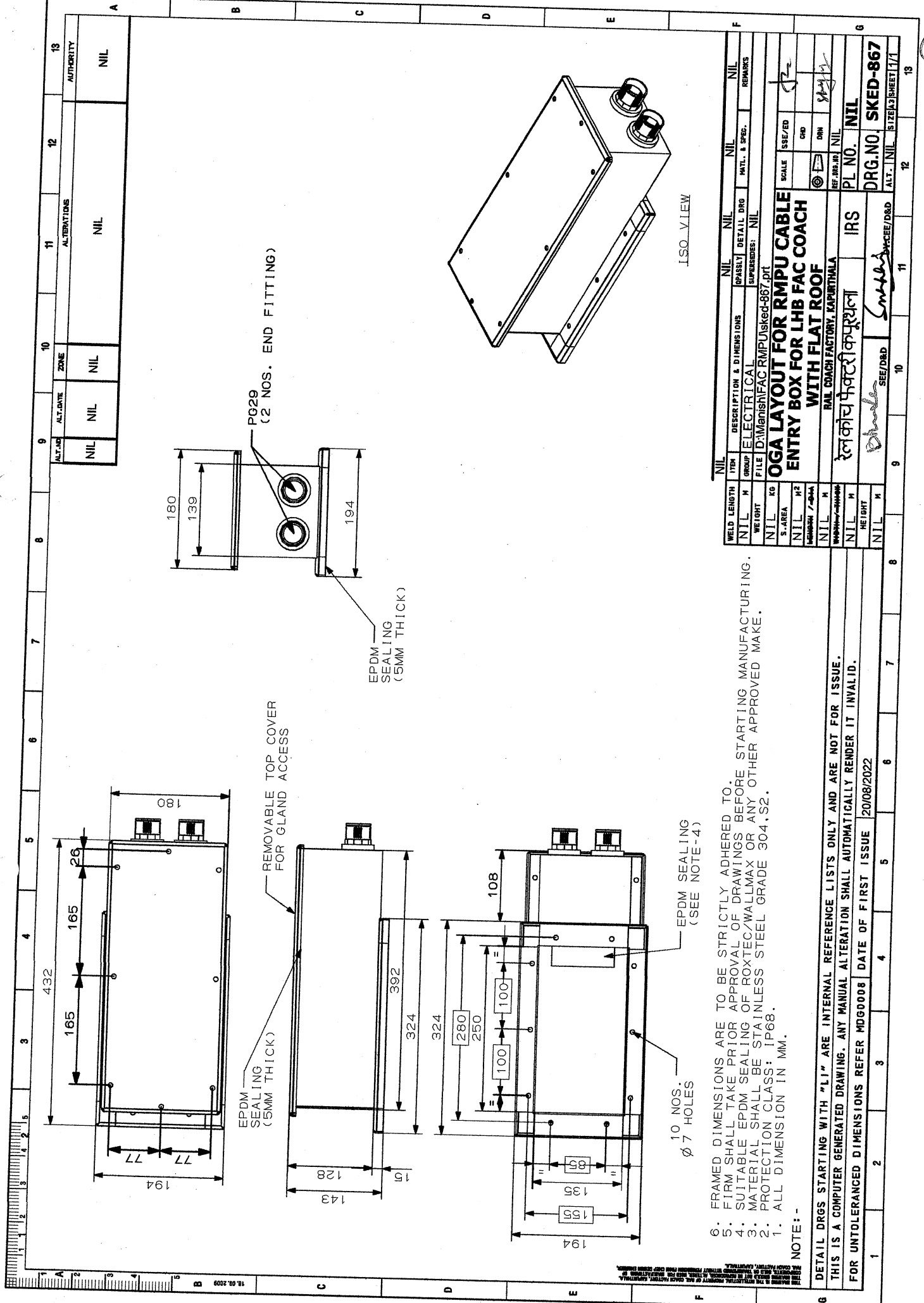
Sr. Nos.	Description of item
1.	OGA of 7TR RMPU shall be as per <b>SKED-862, Alt. 'a'</b> .
2.	Bellow Duct made of Meta Aramid / Para-Aramid Fabric with silicon rubber coating on both side for RMPU shall be as per Specification No. RDSO/PE/SPEC/AC/0197-2019, Rev.'0' and with dimensional details as per <b>SKED-868, Alt. 'Nil'</b> .
3.	Microprocessor controller of RMPU shall be as per RDSO specification No. RDSO/PE/SPEC/AC/0139-2009 (Rev-1), Type-I.
4.	Metallic Frame for Supply and Return Air of RMPU shall be provided as per <b>SKED-866, Alt. 'Nil'</b> .
5.	Cable Entry Box for RMPU (2 no.'s ) shall be as per <b>SKED-867, Alt. 'Nil'</b> and suitable for cable entry polyamide flexible conduits alongwith End fitting 2 no.'s of size PG-29 for Power & Control & shall have IP-68 Degree of Protection.
6.	Drain arrangement system for condensate water from RMPU to End Construction (through Flat Roof) is to be supplied by RMPU manufacturer and installed at coach by RCF. Drain arrangement for condensate water shall includes metallic pipes, rubber hose, clamp and hardware. Metallic pipes and rubber hose shall be suitably clamped / supported and leak proof arrangement shall be ensured.
7.	<ul style="list-style-type: none"> <li>• 02 nos. Harting connectors shall be provided as indicated in the <b>SKED 862, Alt. 'a'</b>. Mating connectors for, Power and Control, shall be supplied by RMPU manufacturer.</li> <li>• The details drawings for Harting connectors with Part number alongwith pin configuration details of Harting connectors shall be got approved from office of CEDE/RCF.</li> </ul>
8.	<ul style="list-style-type: none"> <li>• Polyamide flexible conduit PG29 along with End Fitting from RMPU to RMPU Cable Entry Box as per <b>SKED-867, Alt.'Nil'</b> shall be supplied by RMPU manufacturer.</li> <li>• Polyamide flexible conduit and End Fitting shall be as per RDSO specification No. RDSO/PE/SPEC/AC/0138-2009, Rev. '1'.</li> <li>• The arrangement shall be such as to comply the water tightness with IP-68 degree of Protection</li> </ul>
9.	Firm shall take prior approval of all the drawings before starting manufacturing.

Enclosures :-

1. **SKED-862, Alt. 'a'**.
2. **SKED-866, Alt. 'Nil'**.
3. **SKED-867, Alt. 'Nil'**.
4. **SKED-868, Alt. 'Nil'**.

EDML-195	Nil	10/10/22	<i>JE</i>	<i>Revised</i>	<i>Subhanshu</i>	1 of 1
Document. No.	Rev.	Date	SSE/CAD	SEE/D&D	Dy.CEE/D&D	Page





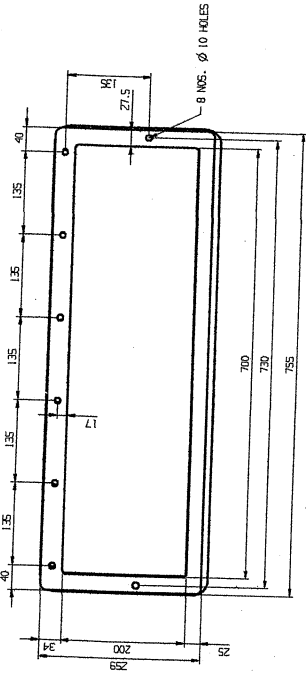
6. FRAMED DIMENSIONS ARE TO BE STRICTLY ADHERED TO.
5. FIRM SHALL TAKE PRIOR APPROVAL OF DRAWINGS BEFORE STARTING MANUFACTURING.
4. SUITABLE EPDM SEALING OF ROXTEC/WALLMAX OR ANY OTHER APPROVED MAKE.
3. MATERIAL SHALL BE STAINLESS STEEL GRADE 304.S2.
2. PROTECTION CLASS: IP68.
1. ALL DIMENSION IN MM.

NOTE :-

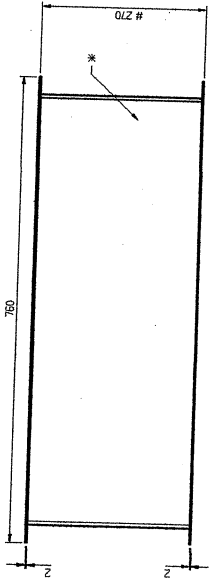
DETAIL DRGS STARTING WITH "LI" ARE INTERNAL REFERENCE LISTS ONLY AND ARE NOT FOR ISSUE.  
 THIS IS A COMPUTER GENERATED DRAWING. ANY MANUAL ALTERATION SHALL AUTOMATICALLY RENDER IT INVALID.  
 FOR UNTOLERANCED DIMENSIONS REFER MDG0008 DATE OF FIRST ISSUE 20/08/2022

WELD LENGTH	NIL	DESCRIPTION & DIMENS IONS	NIL	DETAIL DRG	NIL	REMARKS
NIL	M	GROUP ELECTRICAL	ASSEMBLY	DETAIL DRG	NIL	
WEIGHT	NIL	FILE D:\Mansip\FAC RMP\Jsked-867.dft	SUPERSIDES:	NIL		
NIL	KG					
S-AREA	NIL					
NIL	M <sup>2</sup>					
MANUFACTURE	NIL					
NIL	M					
HEIGHT	NIL					
NIL	M					
		RAIL COACH FACTORY, KAPURTHALA	PL NO.	NIL		
		रामजी कारीगरजी	DRG NO.	SKED-867		
		SEE/D&D	ALT.	NIL	SIZE/A3	SHEET/1/1
		9	10	11	12	13

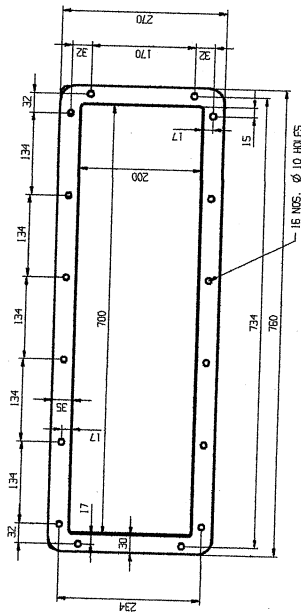
ALT. NO.	ALT. DATE	ZONE	ALTERNATIONS	AUTHORITY
NIL	NIL	NIL	NIL	NIL



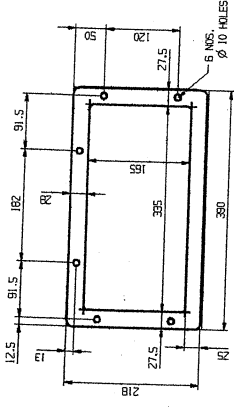
SUPPLY AIR FRAME (RMPU SIDE)



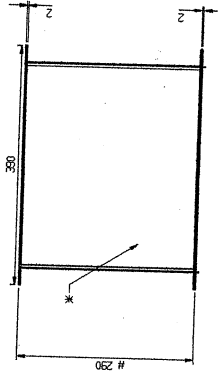
SIDE VIEW SUPPLY AIR BELLOW



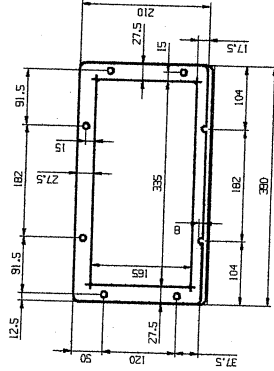
SUPPLY AIR FRAME (COACH SIDE)



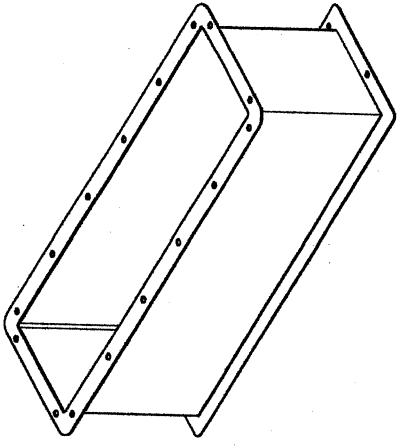
RETURN AIR FRAME (RMPU SIDE)



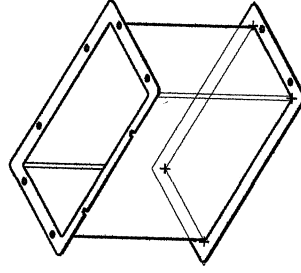
SIDE VIEW RETURN AIR BELLOW



RETURN AIR FRAME (COACH SIDE)



ISO VIEW SUPPLY AIR BELLOW



ISO VIEW RETURN AIR BELLOW

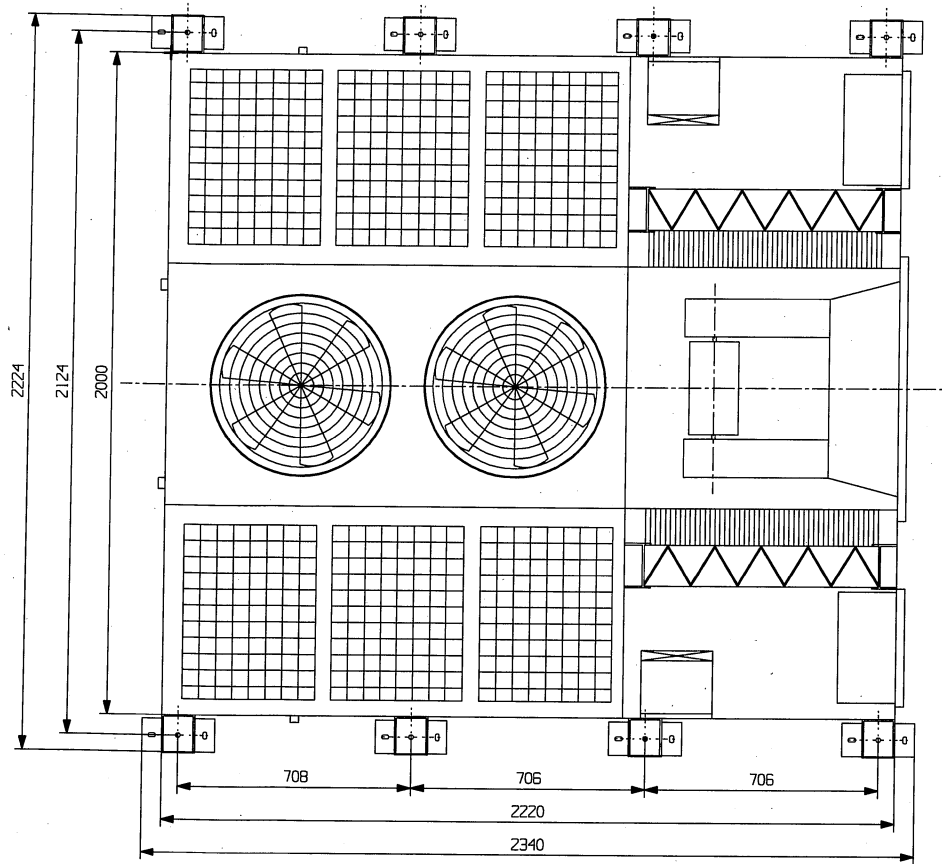
NOTE:  
 # 4. DIMENSIONS (HEIGHT WISE) ARE FOR REFERENCE ONLY EXACT LENGTH WILL BE DECIDED AFTER FITMENT OF RMPU ON FIRST COACH.  
 \* 3. BELLOW TUB SHALL BE MADE OF META ARMOID/PARA-ARMOID FABRIC WITH SILICON RUBBER COATING ON BOTH SIDE AS PER SPECIFICATION NO. RDSO/PZ/SEC/AC/0197-2018, REV. '0'.  
 2. MOUNTING DETAIL OF METALLIC FRAME FOR SUPPLY & RETURN AIR OF RMPU SHALL BE AS PER SKED- 866.  
 1. ALL DIMENSIONS IN MM.

ANY MANUAL ALTERATION SHALL AUTOMATICALLY RENDER THIS DRAWING INVALID.  
 FOR UNTOLERANCED DIMENSIONS REFER MDDG0008  
 DATE OF FIRST ISSUE 18/08/2022

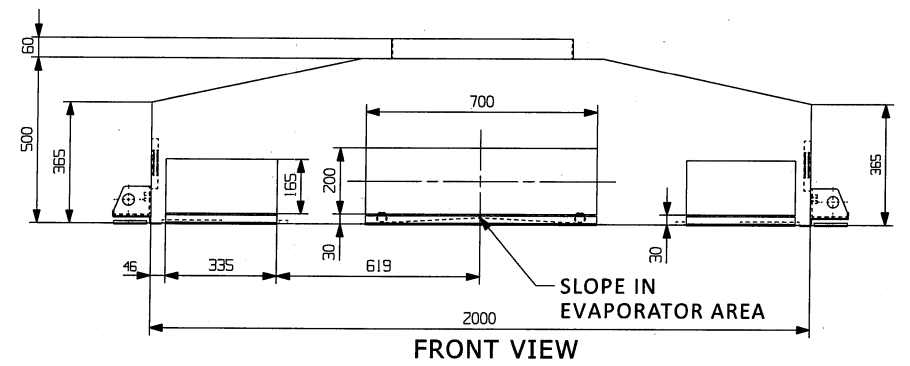
NIL	1	DESCRIPTION & DIMENSIONS	NIL	1	SCALE	1:1	ISSUED	1	1
NIL	2	DATE	NIL	2	DATE	NIL	ISSUED	2	2
NIL	3	PROJECT	NIL	3	PROJECT	NIL	ISSUED	3	3
NIL	4	DESIGNER	NIL	4	DESIGNER	NIL	ISSUED	4	4
NIL	5	CHECKER	NIL	5	CHECKER	NIL	ISSUED	5	5
NIL	6	APPROVER	NIL	6	APPROVER	NIL	ISSUED	6	6
NIL	7	DATE	NIL	7	DATE	NIL	ISSUED	7	7
NIL	8	PROJECT NO.	NIL	8	PROJECT NO.	NIL	ISSUED	8	8
NIL	9	PL NO.	NIL	9	PL NO.	NIL	ISSUED	9	9
NIL	10	DRG. NO.	SKED-868	10	DRG. NO.	SKED-868	ISSUED	10	10
NIL	11	REVISED	NIL	11	REVISED	NIL	ISSUED	11	11
NIL	12	DATE	NIL	12	DATE	NIL	ISSUED	12	12
NIL	13	PROJECT NO.	NIL	13	PROJECT NO.	NIL	ISSUED	13	13
NIL	14	PL NO.	NIL	14	PL NO.	NIL	ISSUED	14	14
NIL	15	DRG. NO.	SKED-868	15	DRG. NO.	SKED-868	ISSUED	15	15
NIL	16	REVISED	NIL	16	REVISED	NIL	ISSUED	16	16
NIL	17	DATE	NIL	17	DATE	NIL	ISSUED	17	17
NIL	18	PROJECT NO.	NIL	18	PROJECT NO.	NIL	ISSUED	18	18
NIL	19	PL NO.	NIL	19	PL NO.	NIL	ISSUED	19	19
NIL	20	DRG. NO.	SKED-868	20	DRG. NO.	SKED-868	ISSUED	20	20

THIS DRAWING IS THE INTELLECTUAL PROPERTY OF RAIL COACH FACTORY, KAPURTHALA.  
 COMPONENTS, SOLD OR TRANSFERRED WITHOUT PERMISSION FROM CHIEF DESIGN ENGINEER,  
 RAIL COACH FACTORY, KAPURTHALA.

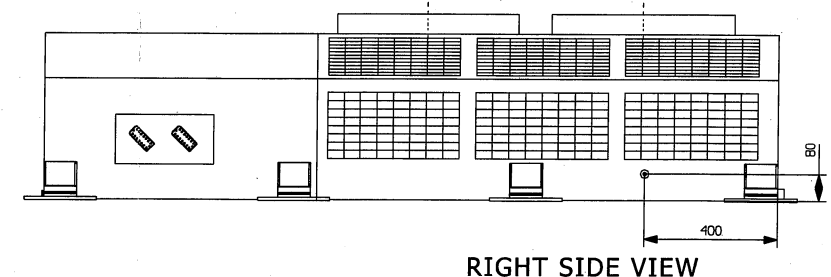
ALT. NO	ALT. DATE	ZONE	ALTERATIONS	AUTHORITY
a	12/08/2022	ALL	1. HARTING CONNECTORS SHOWN ON BOTH SIDES. 2. SLOPE SHOWN IN EVAPORATOR AREA.	NIL



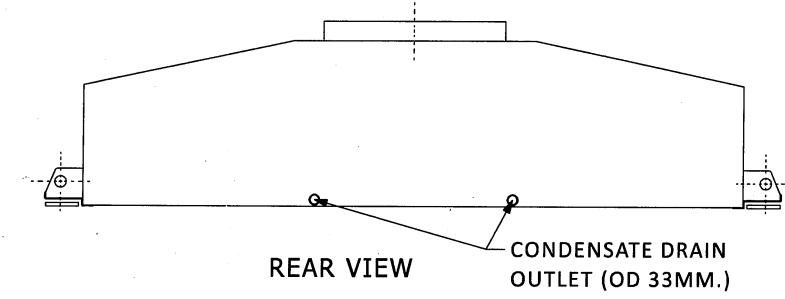
TOP VIEW FOR REFERENCE ONLY



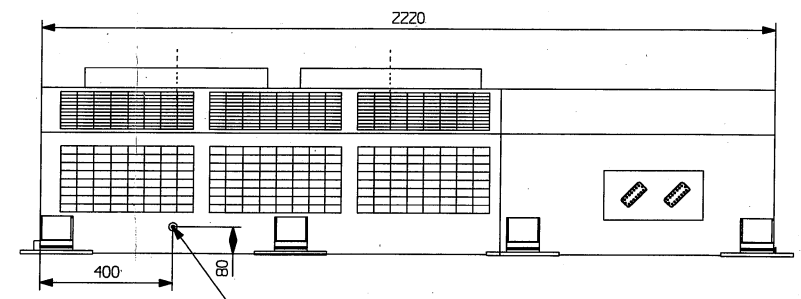
FRONT VIEW



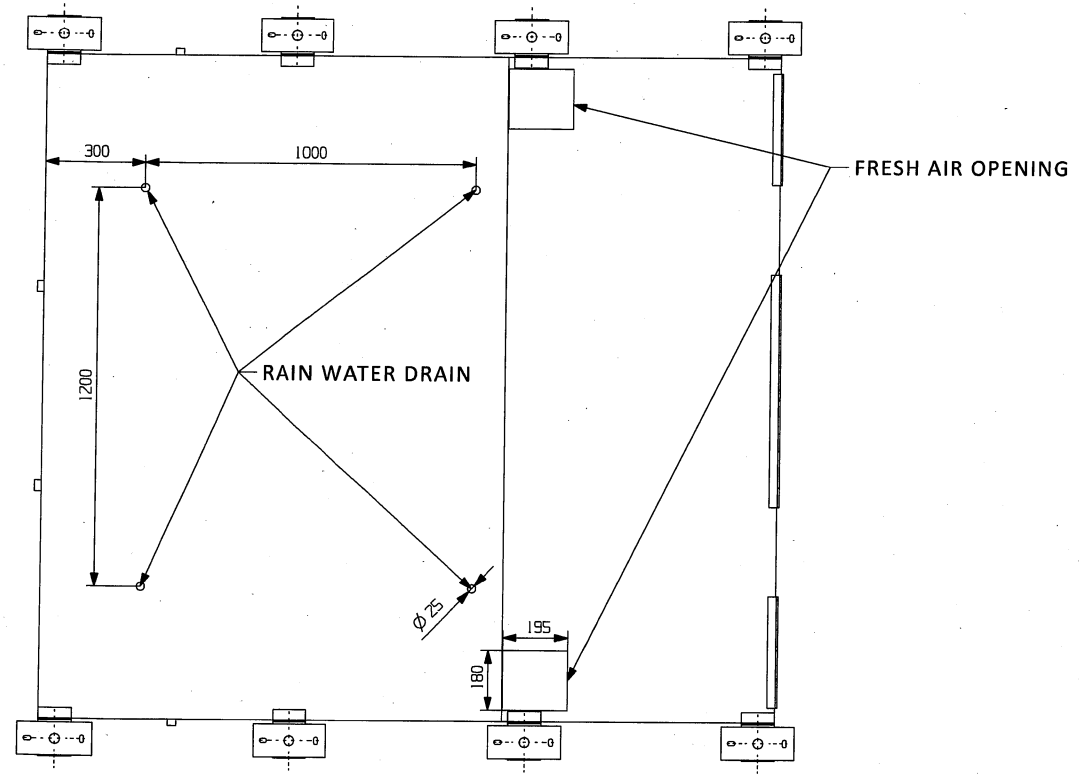
RIGHT SIDE VIEW



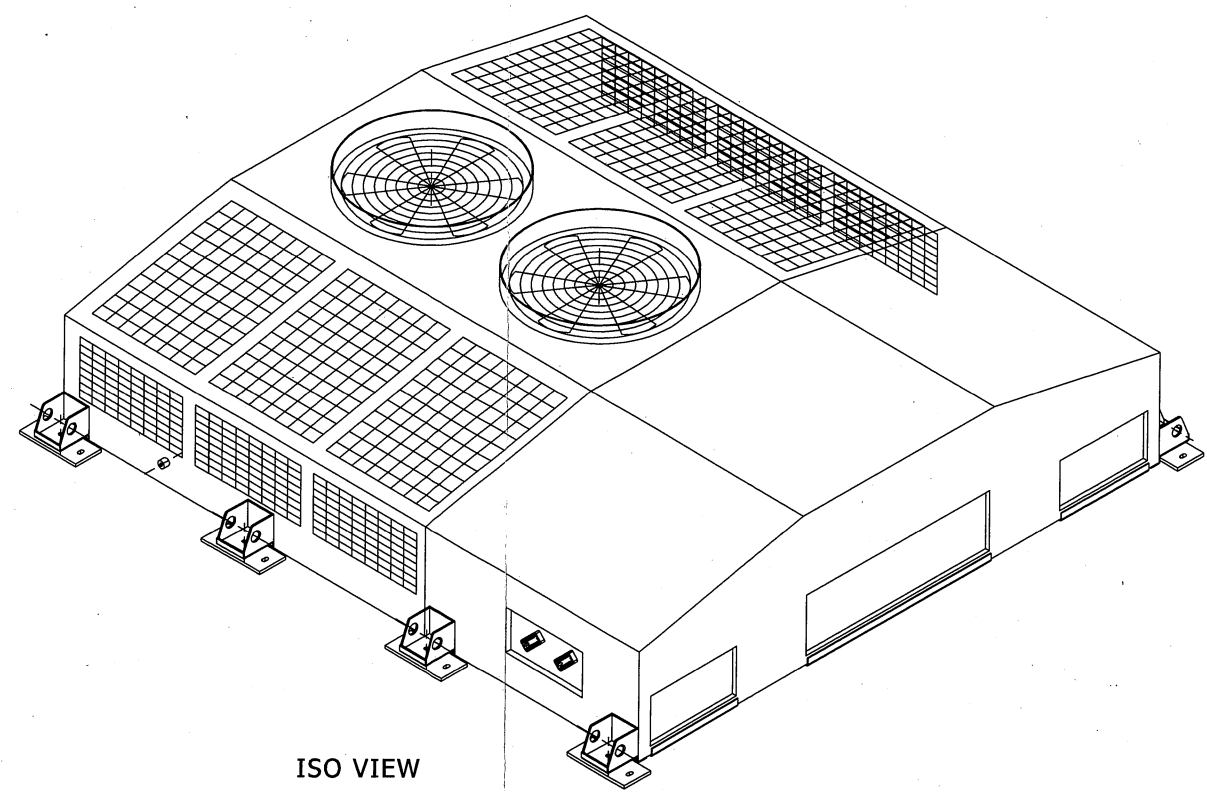
REAR VIEW



LEFT SIDE VIEW



BOTTOM VIEW



ISO VIEW

THIS DRAWING IS THE INTELLECTUAL PROPERTY OF RAIL COACH FACTORY, KAPURTHALA. IT SHOULD NOT BE REPRODUCED, ALTERED, USED FOR MANUFACTURING OF COMPONENTS OR FOR ANY OTHER PURPOSE WITHOUT PERMISSION FROM CHIEF DESIGN ENGINEER, RAIL COACH FACTORY, KAPURTHALA.

NOTE:-  
1. ALL DIMENSIONS IN MM.

ANY MANUAL ALTERATION SHALL AUTOMATICALLY RENDER THIS DRAWING INVALID.				DETAIL DRGS STARTING WITH "LI" ARE INTERNAL REFERENCE LISTS ONLY AND ARE NOT FOR ISSUE.			
FOR UNTOLERANCED DIMENSIONS REFER MDG0008				DATE OF FIRST ISSUE: 07/07/2022			

WELD LENGTH	ITEM	DESCRIPTION & DIMENSIONS	ASSEMBLY	DETAIL DRG	MATL. & SPEC.	REMARKS
NIL	M	ELECTRICAL			NIL	
WEIGHT	FILE	D:\BKRMASKED\sked-862a prt				
NIL	KG					
S. AREA	M <sup>2</sup>	OGA OF 7-TR RMPU FOR LHB EOG AC COACH				
LENGTH/DIA	M	RAIL COACH FACTORY, KAPURTHALA				
NIL	M	REF.DRG.No. NIL				
WIDTH/THICK.	M	रेल कोच फेक्टरी कपूरथला	IRS	PL NO.	NIL	
HEIGHT	M	SEE/D&D	DRN	DRG.NO.	SKED-862	
NIL	M	SEE/D&D	DRN	ALT.	a	SIZE A SHEET 1/2