

MATERIAL LIST FOR SWITCH PLATES FOR LHB HOT BUFFET COACH

It covers the supply of switch plates provided in the LHB Type Hot Buffet Coach.

TABLE-1

S. no.	Description	Drawing no.	QPC
1.	Switch plate assembly complete with polycarbonate cover frame and powder coated steel plate with 4-nos. 6A, 250V Switches	Item-1 of LH74205	4
2.	Switch plate assembly complete with polycarbonate cover frame and powder coated steel plate with 2-nos. 6A, 250V Switches	Item-2 of LH74205	3
3.	Switch plate assembly complete with polycarbonate cover frame and powder coated steel plate with 1-no. 16A, 250V Switch (with LED indication) and 1-no. 6/16A, 250V AC 6-Pin shuttered Socket	Item-3 of LH74205	8

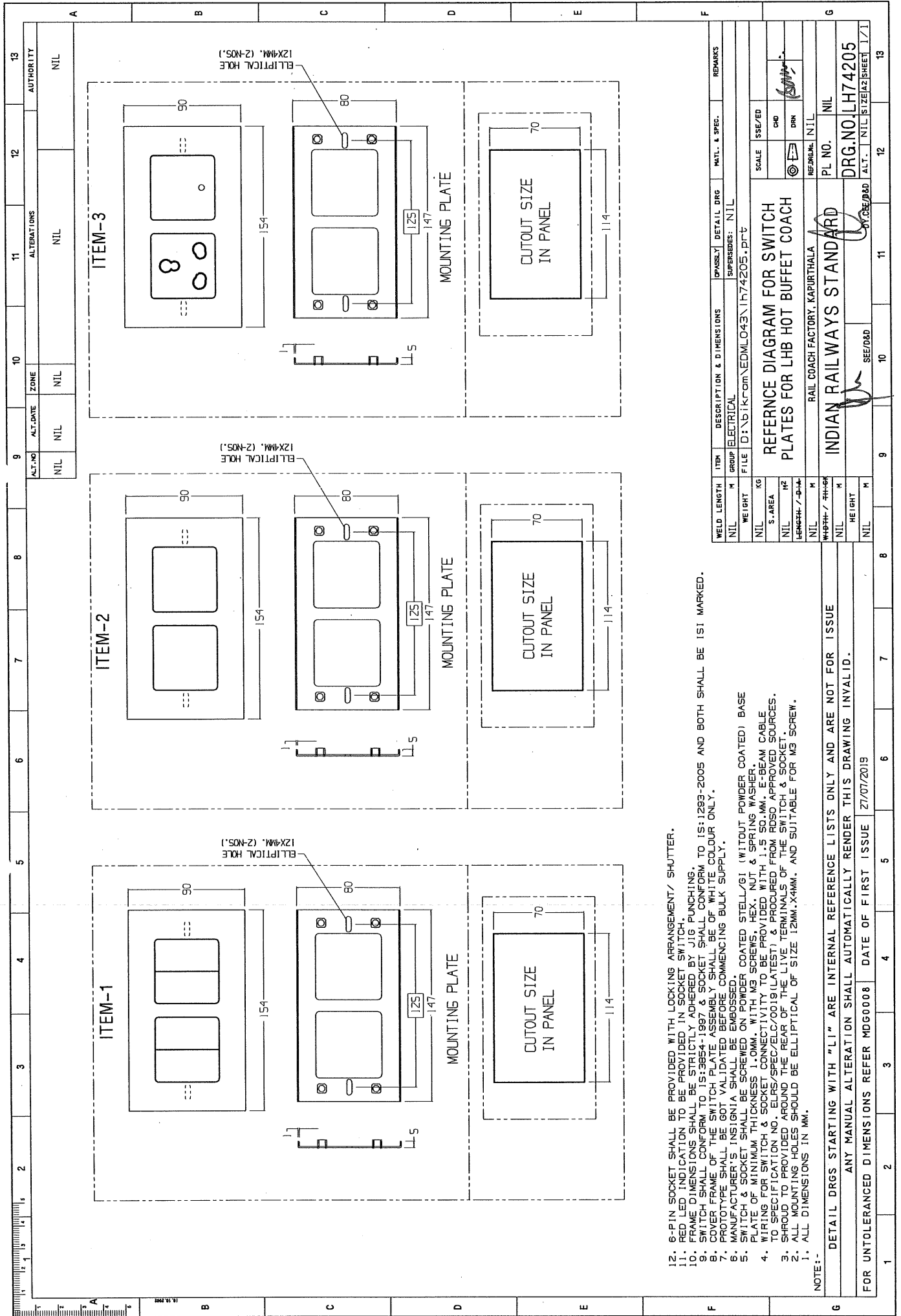
Packing conditions of Switch Plates shall be as follows:

- Stage-1: Standard packing of switch plates as per packing conditions document no. PI042.
- Stage-2: Packing per coach set as per packing conditions document no. PI021. Each packing shall be legibly marked for the type of coach applicable.
- Stage-3: Bulk packing coach wise as per packing conditions document no. PI032. Each packing shall be legibly marked for the type of coach/coaches applicable for.

N.B.

1. Prototype sample shall be got approved from CEDE/RCF before commencing bulk supplies.
2. Switch shall conform to IS: 3854-1997 & socket shall conform to IS: 1293-2005 and both shall be ISI marked.
3. Red colour LED indication shall be provided in charging socket switch.
4. Following test shall be conducted from Govt./NABL accredited lab:-
 - i. Test for polymer identification of FR polycarbonate material.
 - ii. Fire retardant test to grade UL94-V0 from the OEM of the raw material.
 - iii. Test for composition of contact material (fixed and moving).

EDML-043	A	30.07.2019	<i>Ban</i> :	<i>pu</i>	<i>D</i>	1 of 1
Document No.	Rev.	Date	SSE/CAD	SEE/D	Dy.CEE/D&D	Page no.



12. 6-PIN SOCKET SHALL BE PROVIDED WITH LOCKING ARRANGEMENT/ SHUTTER.
 11. FRAME DIMENSIONS SHALL BE PROVIDED IN SOCKET SWITCH.
 10. SWITCH SHALL CONFORM TO IS:3854-1997 & SOCKET SHALL CONFORM TO IS:1293-2005 AND BOTH SHALL BE ISI MARKED.
 9. COVER FRAME OF THE SWITCH PLATE ASSEMBLY SHALL BE OF WHITE COLOUR ONLY.
 8. PROTOTYPE SHALL BE GOT VALIDATED BEFORE COMMENCING BULK SUPPLY.
 7. MANUFACTURER'S INSIGNIA SHALL BE EMBOSSED.
 6. SWITCH & SOCKET SHALL BE SCREWED ON POWDER COATED STEEL/6I (WITHOUT POWDER COATED) BASE PLATE OF MINIMUM THICKNESS 1.0MM. WITH M3 SCREWS, HEX. NUT & SPRING WASHER.
 5. WIRING FOR SWITCH & SOCKET CONNECTIVITY TO BE PROVIDED WITH 1.5 SQ.MM. E-BEAM CABLE TO SPECIFICATION NO. ELRS/SPEC/ELC/0019 (LATEST) & PROCURED FROM RSO APPROVED SOURCES.
 4. SHROUD TO PROVIDED AROUND THE REAR OF THE LIVE TERMINALS OF THE SWITCH & SOCKET.
 3. ALL MOUNTING HOLES SHOULD BE ELLIPTICAL OF SIZE 12MM X 4MM, AND SUITABLE FOR M3 SCREW.
 2. ALL DIMENSIONS IN MM.

NOTE:-
 1. ALL DIMENSIONS IN MM.
 2. ALL MOUNTING HOLES SHOULD BE ELLIPTICAL OF SIZE 12MM X 4MM, AND SUITABLE FOR M3 SCREW.
 3. WIRING FOR SWITCH & SOCKET CONNECTIVITY TO BE PROVIDED WITH 1.5 SQ.MM. E-BEAM CABLE TO SPECIFICATION NO. ELRS/SPEC/ELC/0019 (LATEST) & PROCURED FROM RSO APPROVED SOURCES.
 4. SHROUD TO PROVIDED AROUND THE REAR OF THE LIVE TERMINALS OF THE SWITCH & SOCKET.
 5. SWITCH & SOCKET SHALL BE SCREWED ON POWDER COATED STEEL/6I (WITHOUT POWDER COATED) BASE PLATE OF MINIMUM THICKNESS 1.0MM. WITH M3 SCREWS, HEX. NUT & SPRING WASHER.
 6. MANUFACTURER'S INSIGNIA SHALL BE EMBOSSED.
 7. PROTOTYPE SHALL BE GOT VALIDATED BEFORE COMMENCING BULK SUPPLY.
 8. COVER FRAME OF THE SWITCH PLATE ASSEMBLY SHALL BE OF WHITE COLOUR ONLY.
 9. SWITCH SHALL CONFORM TO IS:3854-1997 & SOCKET SHALL CONFORM TO IS:1293-2005 AND BOTH SHALL BE ISI MARKED.
 10. FRAME DIMENSIONS SHALL BE PROVIDED IN SOCKET SWITCH.
 11. 6-PIN SOCKET SHALL BE PROVIDED WITH LOCKING ARRANGEMENT/ SHUTTER.

DETAIL DRS STARTING WITH "LI" ARE INTERNAL REFERENCE LISTS ONLY AND ARE NOT FOR ISSUE
 ANY MANUAL ALTERATION SHALL AUTOMATICALLY RENDER THIS DRAWING INVALID.
 FOR UNTOLERANCED DIMENSIONS REFER MDOG008 DATE OF FIRST ISSUE 27/07/2019

WELD LENGTH	ITEM	DESCRIPTION & DIMENSIONS	IPASSY	DETAIL DRS	MATL. & SPEC.	REMARKS
NIL	M	ELECTRICAL				
WEIGHT	FILE	SUPERSEDES: NIL				
NIL		D:\Bikram\EDMLO43\H74205.DWG				
S. AREA	REFERENCE: NIL					
NIL	SCALE: 1:1					
LENGTH / DIA	CHK: / DRN: /					
NIL	REF. NO. NIL					
WEIGHT / DIA	PL NO. NIL					
NIL	DRG. NO. LH74205					
HEIGHT	ALT. NIL					
NIL	SEE/D&D					

INDIAN RAILWAYS STANDARD
 RAIL COACH FACTORY, KAPURTHALA

AL.T. NO	AL.T. DATE	ZONE	ALTERATIONS	AUTHORITY
NIL	NIL	NIL	NIL	NIL

(14)

Corrigendum-1

Corrigendum -1 to EDML-043, Rev-A for Set of Switch Plate Assemblies for LHB Hot Buffet Coaches

This corrigendum is issued to EDML-043, Rev-A for 'Set of Switch Plate Assemblies for LHB Hot Buffet Coaches' to incorporate the following modifications:-

1. Following drawing amended as follows:-
Drg. No. LH74205 may be read as Drg. No. - LH74205, Alt - 'a'.

N.B. 2)

Existing:-

Switch shall conform to IS: 3854-1997 & socket shall conform to IS: 1293-2005 and both shall be ISI marked.

Revised:-

Switch shall conform to IS: 3854-1997 or latest & shall be ISI Marked whereas 5-pin Socket shall not be ISI marked, However it shall meet the testing requirements as specified in IS: 1293-2005 or Latest.

N.B. 4)

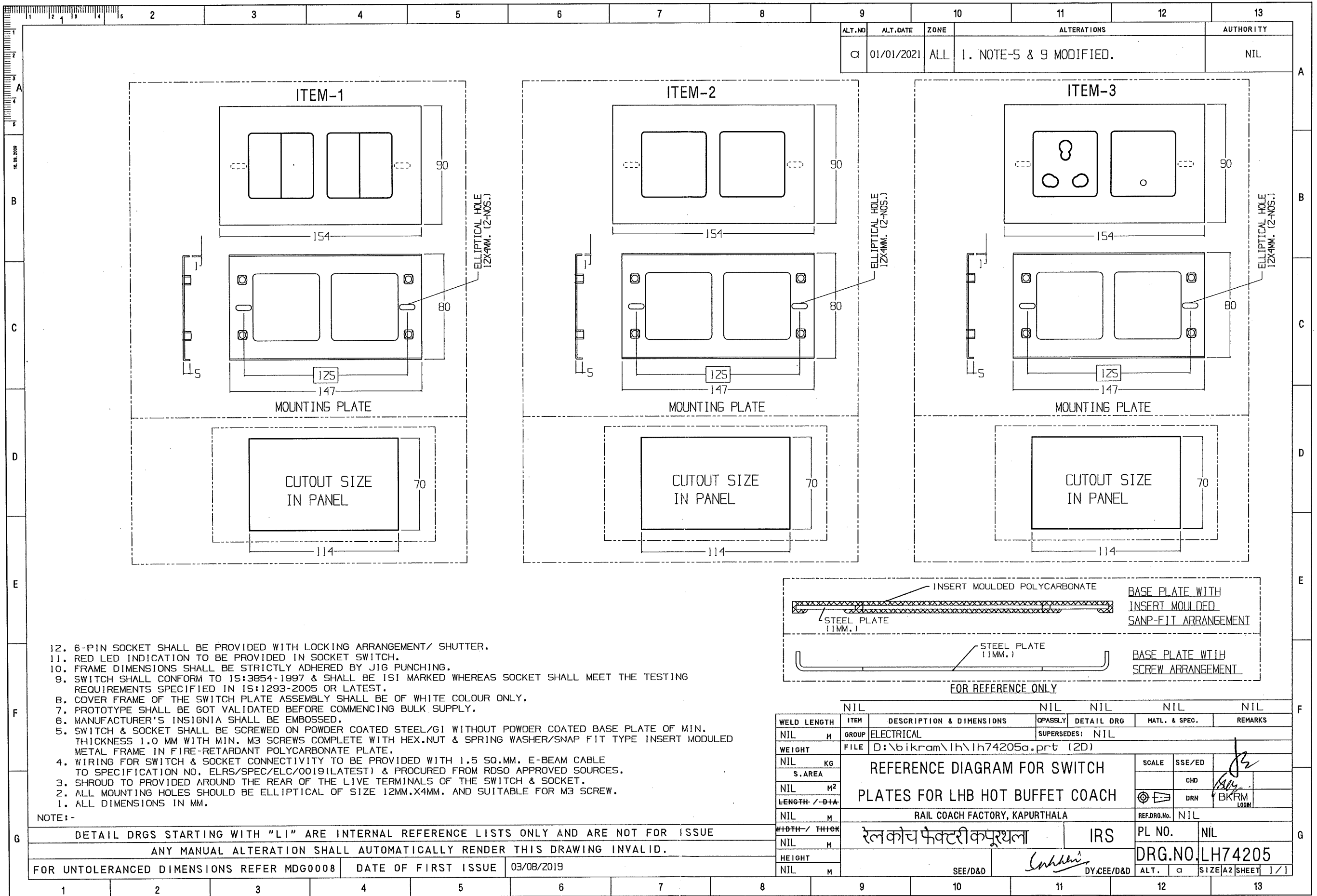
Test for composition of contact material (fixed or moving) at S. No. iii) deleted however, the details of composition of contact material used in switch and socket to be provided by the firm.

New Clauses:-

1. For Contact opening in Switch, Normal Gap Construction shall be followed as per Clause no. 7.1.2 of IS: 3854-1997.
2. Switch shall be of unenclosed type as per Clause No. 7.1.3 of IS: 3854-1997.
3. Switch shall conform to Degree of Protection: IPX0 as per Clause No. 7.1.4 of IS: 3854-1997.
4. Method of Activation of Switch shall be of Rocker type as per Clause No. 7.1.5 of IS: 3854-1997.
5. Switch shall be of Flush Type as per Clause No. 7.1.6 of IS: 3854-1997.
6. Switch shall be installed as per Design A mentioned in the Clause No. 7.1.7 of IS: 3854-1997.
7. Switch and Socket shall be screwed type on powder coated steel/GI without powder coated base plate of minimum thickness 1.0 mm with M3 screws with nut and spring washer/Snap fit modular type with insert moulded metal frame in fire retardant polycarbonate plate.

EDML-043 Rev-A	1	01.01.2020	<i>Boyer</i>	<i>Prasad</i>	<i>Sankar</i>	1 of 1
Document No.	Corr.	Date	SSE/CAD	SEE/D	Dy.CEE/D&D	Page no.

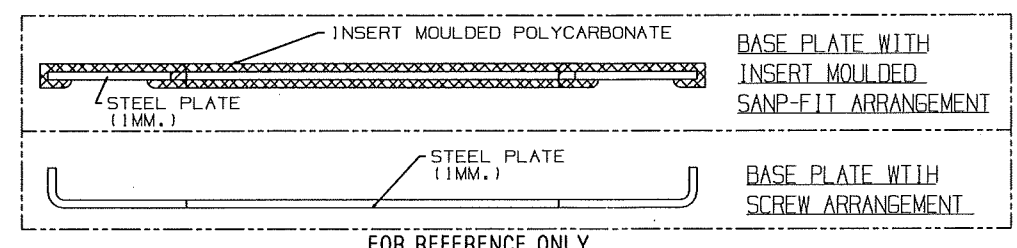
8



ALT. NO.	ALT. DATE	ZONE	ALTERATIONS	AUTHORITY
α	01/01/2021	ALL	1. NOTE-5 & 9 MODIFIED.	NIL

12. 6-PIN SOCKET SHALL BE PROVIDED WITH LOCKING ARRANGEMENT/ SHUTTER.
11. RED LED INDICATION TO BE PROVIDED IN SOCKET SWITCH.
10. FRAME DIMENSIONS SHALL BE STRICTLY ADHERED BY JIG PUNCHING.
9. SWITCH SHALL CONFORM TO IS:3854-1997 & SHALL BE IS1 MARKED WHEREAS SOCKET SHALL MEET THE TESTING REQUIREMENTS SPECIFIED IN IS:1293-2005 OR LATEST.
8. COVER FRAME OF THE SWITCH PLATE ASSEMBLY SHALL BE OF WHITE COLOUR ONLY.
7. PROTOTYPE SHALL BE GOT VALIDATED BEFORE COMMENCING BULK SUPPLY.
6. MANUFACTURER'S INSIGNIA SHALL BE EMBOSSED.
5. SWITCH & SOCKET SHALL BE SCREWED ON POWDER COATED STEEL/GI WITHOUT POWDER COATED BASE PLATE OF MIN. THICKNESS 1.0 MM WITH MIN. M3 SCREWS COMPLETE WITH HEX.NUT & SPRING WASHER/SNAP FIT TYPE INSERT MODULED METAL FRAME IN FIRE-RETARDANT POLYCARBONATE PLATE.
4. WIRING FOR SWITCH & SOCKET CONNECTIVITY TO BE PROVIDED WITH 1.5 SQ.MM. E-BEAM CABLE TO SPECIFICATION NO. ELRS/SPEC/ELC/0019(LATEST) & PROCURED FROM RDSO APPROVED SOURCES.
3. SHROUD TO PROVIDED AROUND THE REAR OF THE LIVE TERMINALS OF THE SWITCH & SOCKET.
2. ALL MOUNTING HOLES SHOULD BE ELLIPTICAL OF SIZE 12MM.X4MM. AND SUITABLE FOR M3 SCREW.
1. ALL DIMENSIONS IN MM.

NOTE:-
 G
 DETAIL DRGS STARTING WITH "LI" ARE INTERNAL REFERENCE LISTS ONLY AND ARE NOT FOR ISSUE
 ANY MANUAL ALTERATION SHALL AUTOMATICALLY RENDER THIS DRAWING INVALID.



WELD LENGTH	ITEM	DESCRIPTION & DIMENSIONS	OPASSLY	DETAIL DRG	MATL. & SPEC.	REMARKS
NIL	M	GROUP ELECTRICAL				
WEIGHT	FILE	D:\bikram\lh\lh74205a.prt (2D)				
NIL	KG	REFERENCE DIAGRAM FOR SWITCH				
NIL	S.AREA	PLATES FOR LHB HOT BUFFET COACH				
NIL	M ²	RAIL COACH FACTORY, KAPURTHALA				
LENGTH / DIA	M	रेलकोच फेक्टरी कपूरथला				
NIL	M	IRS				
WIDTH / THICK	M	DRG.NO. LH74205				
NIL	M	SEE/D&D				
HEIGHT	M	DY.CEE/D&D				
NIL	M	ALT. α SIZE/A2 SHEET 1/1				

FOR UNTOLERANCED DIMENSIONS REFER MDG0008	DATE OF FIRST ISSUE	03/08/2019
---	---------------------	------------

**Corrigendum -2 to EDML-043, Rev-A, Corr-1 for Switch Plate Assemblies for
LHB EOG Hot Buffet Coaches**

This corrigendum is issued to EDML-043, Rev-A, Corr-1 for 'Switch Plate Assemblies for LHB Hot Buffet Coaches' to incorporate the following modifications:-

1. Following drawing is amended as follows:-



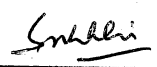
- Drg. No. LH74205, Alt-'a' may be read as Drg. No. LH74205, Alt - 'b'.
- Description of Item-3 is changed in Table-1.
- It covers the supply of switch plates provided in the LHB Type Hot Buffet Coach.

TABLE-1

S. no.	Description	Reference	QPC	Remarks
1.	Switch plate assembly complete with polycarbonate cover frame and powder coated steel plate with 4-nos. 6A, 250V AC Switches.	Drg. No. LH74205, Alt-b	4	Drg. No. LH74205, Alt-b Item-1
2.	Switch plate assembly complete with polycarbonate cover frame and powder coated steel plate with 2-nos. 6A, 250V AC Switches.	Drg. No. LH74205, Alt-b	3	Drg. No. LH74205, Alt-b Item-2
3.	Switch plate assembly complete with polycarbonate cover frame and powder coated steel plate with 1-no. 16A, 250V AC Switch and 1-no. 6/16A, 250V AC 6-Pin Socket.	Drg. No. LH74205, Alt-b	8	Drg. No. LH74205, Alt-b Item-3

N.B.

1. Firm shall get prototype sample approved from CEDE/RCF before commencing Bulk supply.
2. Switch shall conform to IS: 3854-1997 or latest & Socket shall conform to IS: 1293-2019 or latest and both shall be ISI marked.
3. For contact opening in switch, Normal Gap Construction shall be followed as per Clause no.7.1.2 of IS: 3854-1997.
4. Switch shall be of unenclosed type as per Clause no.7.1.3 of IS: 3854-1997.
5. Switch shall conform to Degree of Protection: IPXO as per Clause no.7.1.4 of IS:3854-1997


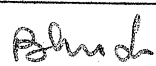

EDML-043, Rev-A, Corr-1	2	26.09.2022				1 of 2
Document No.	Corr.	Date	SSE/CAD	SEE/D	Dy.CEE/D&D	Page no.

EDML-043,Rev. 'A',CORR-2

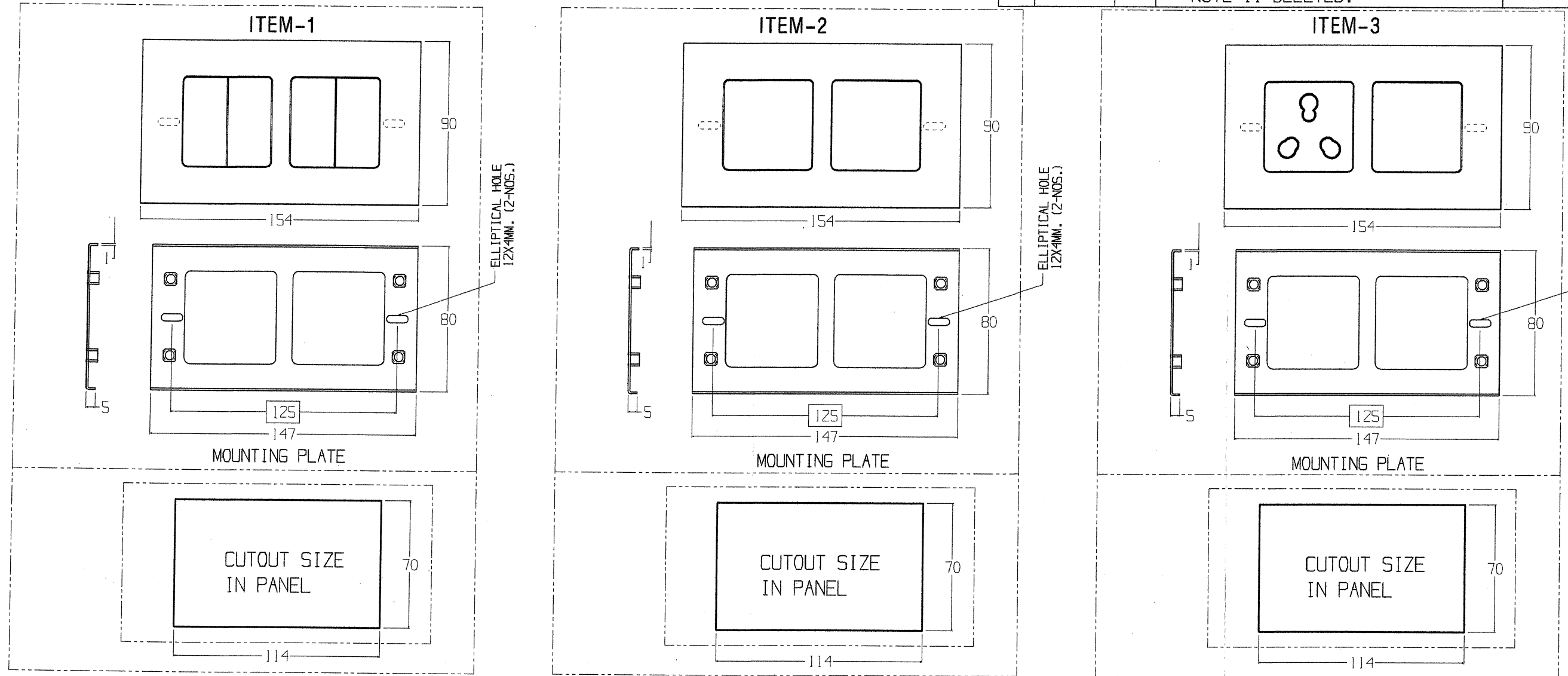
6. Method of Activation of switch shall be of Rocker type as per Clause no. 7.1.5 of IS: 3854-1997.
7. Switch shall be Flush type as per Clause no.7.1.6 of IS: 3854-1997.
8. Switch shall be installed as per Design A mentioned in the Clause no.7.1.7 of IS: 3854-1997.
9. Switch and socket shall be screwed on powder coated steel/GI without powder coated base plate of minimum thickness 1.0mm with M3 screw with nut and spring washer/snap fit modular type with insert moulded metal frame in fire retardant polycarbonate plate.
10. The details of composition of contact material used in switch and socket to be provided by the firm.
11. Following test shall be conducted from Govt./NABL accredited lab:-
 - i. Test for Polymer identification of FR Polycarbonate material.
 - ii. Fire retardant test to grade UL-94 V0 from the OEM of the raw material.

Packing condition of switch plates shall be as follows:

- Stage 1: Standard packing of switch plates mentioned above as per packing conditions document no.P1042.
- Stage 2: Packing per coach set as per packing conditions document no. P1021.Each packing shall be legibly marked for the type of coach applicable for.
- Stage 3: Bulk packing coach wise as per packing conditions document no.P1032. Each packing shall be legibly marked for the type of coach/coaches applicable for.

EDML-043, Rev-A,Corr-1	2	26.09.2022				2 of 2
Document No.	Corr.	Date	SSE/CAD	SEE/D	Dy.CEE/D&D	Page no.

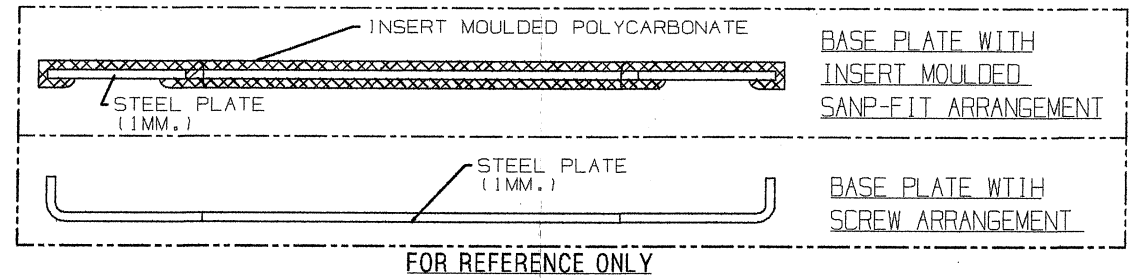
ALT.NO	ALT.DATE	ZONE	ALTERATIONS	AUTHORITY
b	23/09/2022	ALL	1. RED INDICATOR LED DELETED IN DRAWING. 2. NOTE-9 & 12 MODIFIED AND NOTE-11 DELETED.	CR.NO. - 23002209334



THIS DRAWING IS THE INTELLECTUAL PROPERTY OF RAIL COACH FACTORY, KAPURTHALA. THIS DRAWING SHOULD NOT BE REPRODUCED, ALTERED, USED FOR MANUFACTURING OF COMPONENTS SOLD OR TRANSFERRED WITHOUT PERMISSION FROM CHIEF DESIGN ENGINEER, RAIL COACH FACTORY, KAPURTHALA.

12. 6-PIN SOCKET SHALL BE PROVIDED WITHOUT LOCKING ARRANGEMENT/WITHOUT SHUTTER.
11. RED LED INDICATION TO BE PROVIDED IN SOCKET SWITCH.
10. FRAME DIMENSIONS SHALL BE STRICTLY ADHERED BY JIG PUNCHING.
9. SWITCH SHALL CONFORM TO IS:3854-1997 OR LATEST & SOCKET SHALL CONFORM TO IS:1293-2019 OR LATEST & BOTH SHALL BE ISI MARKED.
8. COVER FRAME OF THE SWITCH PLATE ASSEMBLY SHALL BE OF WHITE COLOUR ONLY.
7. PROTOTYPE SHALL BE GOT VALIDATED BEFORE COMMENCING BULK SUPPLY.
6. MANUFACTURER'S INSIGNIA SHALL BE EMBOSSED.
5. SWITCH & SOCKET SHALL BE SCREWED ON POWDER COATED STEEL/GI WITHOUT POWDER COATED BASE PLATE OF MIN. THICKNESS 1.0 MM WITH MIN. M3 SCREWS COMPLETE WITH HEX.NUT & SPRING WASHER/SNAP FIT TYPE INSERT MODULED METAL FRAME IN FIRE-RETARDANT POLYCARBONATE PLATE.
4. WIRING FOR SWITCH & SOCKET CONNECTIVITY TO BE PROVIDED WITH 1.5 SQ.MM. E-BEAM CABLE TO SPECIFICATION NO. ELRS/SPEC/ELC/0019(LATEST) & PROCURED FROM RDSO APPROVED SOURCES.
3. SHROUD TO PROVIDED AROUND THE REAR OF THE LIVE TERMINALS OF THE SWITCH & SOCKET.
2. ALL MOUNTING HOLES SHOULD BE ELLIPTICAL OF SIZE 12MM.X4MM. AND SUITABLE FOR M3 SCREW.
1. ALL DIMENSIONS IN MM.

NOTE:-



NIL	NIL	NIL	NIL	NIL	NIL	
WELD LENGTH	ITEM	DESCRIPTION & DIMENSIONS	OPASSLY	DETAIL DRG	MATL. & SPEC.	REMARKS
NIL	M	GROUP ELECTRICAL	SUPERSEDES: LH74205 ALT a			
WEIGHT	FILE	Z:\YKDS\NLW\lh74205b.prt				
NIL	KG	REFERENCE DIAGRAM FOR SWITCH PLATES FOR LHB HOT BUFFET COACH		SCALE	SSE/ED	
S.AREA	M ²			CHD	DRN	
LENGTH / DIA	M	RAIL COACH FACTORY, KAPURTHALA		REF.DRG.No.	NIL	
WIDTH / THICK	M	रेल कोच फैक्टरी कपूरथला		PL NO.	NIL	
NIL	M	SEE/D&D		DRG.NO. LH74205		
HEIGHT	M	SEE/D&D		ALT.	b	SIZE/A2 SHEET 1/1

DETAIL DRGS STARTING WITH "LI" ARE INTERNAL REFERENCE LISTS ONLY AND ARE NOT FOR ISSUE

ANY MANUAL ALTERATION SHALL AUTOMATICALLY RENDER THIS DRAWING INVALID.

FOR UNTOLERANCED DIMENSIONS REFER MDG0008 DATE OF FIRST ISSUE 26/09/2022