

Rail Coach Factory Kapurthala


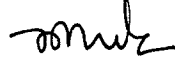
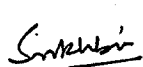
रेल कोच फैक्ट्री कपूरथला

Doc. No. : EDML 207

दस्तावेज़ सं०. : ईडीएमएल २०७

**Supply, Installation, Testing & Commissioning of Electric Instant Water Heater
5.5KW, 230VAC 50HZ with SS Enclosure in LHB AC Coaches for USBRL Rake.**

यू एसबीआरएल रेक के लिए एलएचबी एसी कोच में स्टेनलेस स्टील एनक्लोजर के साथ 5.5 किलोवाट, 230 वीएसी 50 हर्ट्ज इलेक्ट्रिक इंस्टेंट वॉटर हीटर की आपूर्ति, स्थापना, परीक्षण और कमीशनिंग।

EDML 207	0	23.05.23				
Doc. No.	Rev.	Date	SSE/CAD	SEE/D&D	DYCEE/D&D	Pg. 1 of 2
दस्तावेज़ सं०.	संशोधन	तारीख	एसएसई	एसईई / डी एंड डी	उप मु०.वि०. अभि० / डी एंड डी	पृष्ठ १ का २

Rail Coach Factory Kapurthala

रेल कोच फैक्ट्री कपूरथला

Doc. No. : EDML 207

दस्तावेज़ सं०. : ईडीएमएल २०७



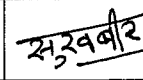
The subject document (**Technical Data Sheet**) is being prepared to Cover the **Supply, Installation, Testing & Commissioning (SITC)** of Electric Instant Water Heater **5.5KW, 230VAC 50HZ with SS Enclosure** in LHB AC Coaches for USBRL Rake.

1. **Scope of Supply comprises of One coach Set as per undergiven details:**

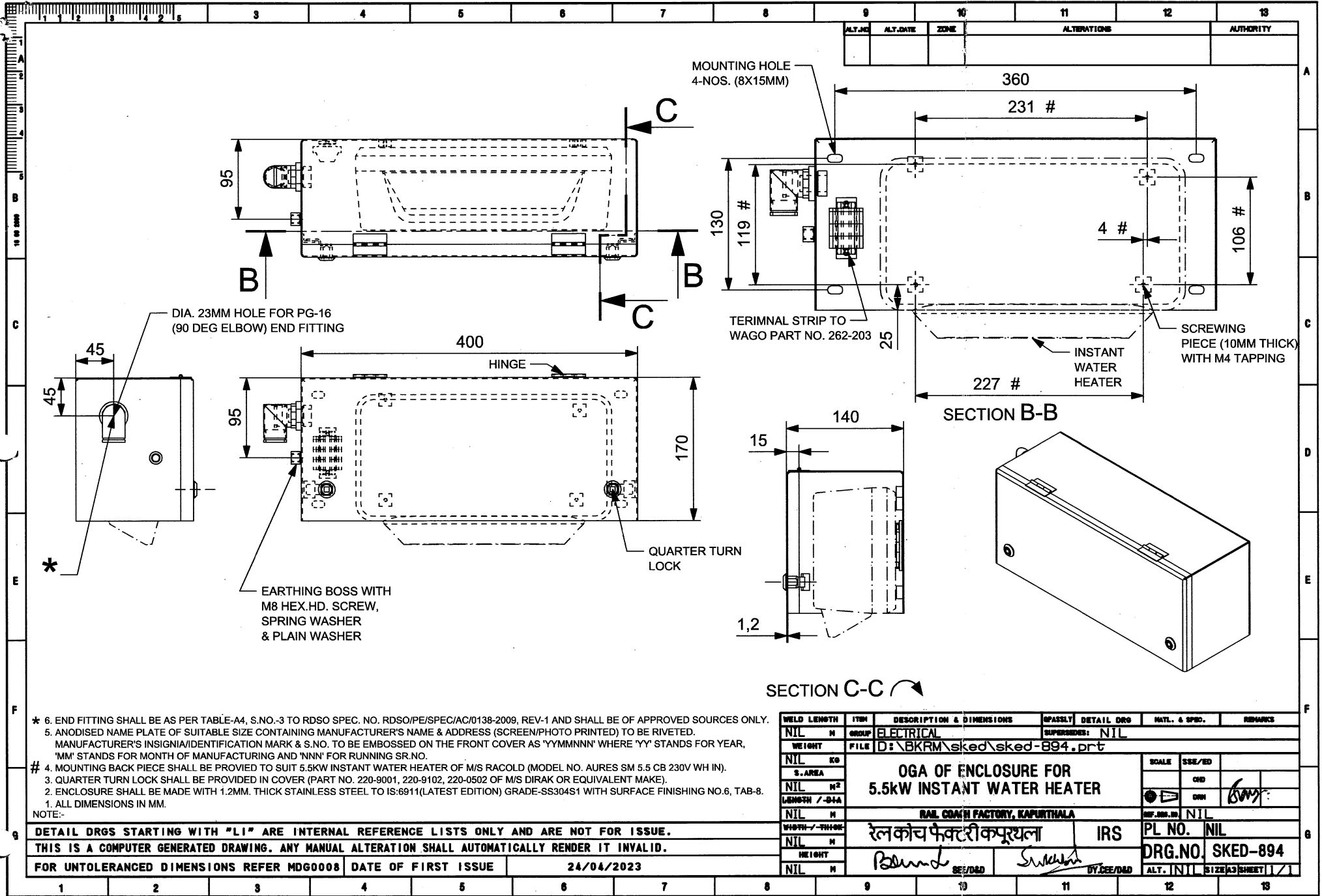
Sno.	Item Description	Ref. Drg.	Spec/Part no.	QPC
1.	Electric Instant Water Heater 5.5KW, 230VAC 50HZ with SS Enclosure.	Drg. no. SKED -894	<ul style="list-style-type: none"> • Model/ Make : AURES SM 5.5 CB 230V WH IN of M/s Racold make or dimensionally & functionally equivalent superior make. • Rating: 5.5KW, 230VAC 50HZ • Enclosure: Stainless Steel 	02 nos.
2.	Output RCCB rating 40A, 240/415VAC with Sensitive 30mA.	-	BC204003 of L&T Equivalent Siemens/GE/ Hager/ Schneider make.	02 nos.
3.	4-conductor terminal strip with fixing flanges	-	Part no 262-203 of WAGO or equivalent.	02 nos.
4.	SS Hardware's (M8)	-	All hardware's (SS) required for fixing of unit in coach will be in firms scope.	As per requirement

2. **E-beam cables/ Polyamide conduit (NW17) along with Clamps etc. will be in RCF Scope.**

Note: Firm shall take prior approval of Prototype Sample from office of CEDE/RCF before Start Commissioning in Coaches.

EDML 207	0	23.05.23				
Doc. No.	Rev.	Date	SSE/CAD	SEE/D&D	DYCEE/D&D	Pg. 2 of 2
दस्तावेज़ सं०.	संशोधन	तारीख	एसएसई	एसईई / डी एंड डी	उप मु०.वि०. अभि० / डी एंड डी	पृष्ठ २ का २

4



ALT. NO.	ALT. DATE	ZONE	ALTERATIONS	AUTHORITY

- * 6. END FITTING SHALL BE AS PER TABLE-A4, S.NO.-3 TO RDSO SPEC. NO. RDSO/PE/SPEC/AC/0138-2009, REV-1 AND SHALL BE OF APPROVED SOURCES ONLY.
- 5. ANODISED NAME PLATE OF SUITABLE SIZE CONTAINING MANUFACTURER'S NAME & ADDRESS (SCREEN/PHOTO PRINTED) TO BE RIVETED. MANUFACTURER'S INSIGNIA/IDENTIFICATION MARK & S.NO. TO BE EMBOSSED ON THE FRONT COVER AS 'YYMMNNN' WHERE 'YY' STANDS FOR YEAR, 'MM' STANDS FOR MONTH OF MANUFACTURING AND 'NNN' FOR RUNNING SR.NO.
- # 4. MOUNTING BACK PIECE SHALL BE PROVIDED TO SUIT 5.5KW INSTANT WATER HEATER OF M/S RACOLD (MODEL NO. AURES SM 5.5 CB 230V WH IN).
- 3. QUARTER TURN LOCK SHALL BE PROVIDED IN COVER (PART NO. 220-9001, 220-9102, 220-0502 OF M/S DIRAK OR EQUIVALENT MAKE).
- 2. ENCLOSURE SHALL BE MADE WITH 1.2MM. THICK STAINLESS STEEL TO IS:6911(LATEST EDITION) GRADE-SS304S1 WITH SURFACE FINISHING NO.6, TAB-8.
- 1. ALL DIMENSIONS IN MM.

NOTE:-
 * 6. END FITTING SHALL BE AS PER TABLE-A4, S.NO.-3 TO RDSO SPEC. NO. RDSO/PE/SPEC/AC/0138-2009, REV-1 AND SHALL BE OF APPROVED SOURCES ONLY.
 5. ANODISED NAME PLATE OF SUITABLE SIZE CONTAINING MANUFACTURER'S NAME & ADDRESS (SCREEN/PHOTO PRINTED) TO BE RIVETED. MANUFACTURER'S INSIGNIA/IDENTIFICATION MARK & S.NO. TO BE EMBOSSED ON THE FRONT COVER AS 'YYMMNNN' WHERE 'YY' STANDS FOR YEAR, 'MM' STANDS FOR MONTH OF MANUFACTURING AND 'NNN' FOR RUNNING SR.NO.
 # 4. MOUNTING BACK PIECE SHALL BE PROVIDED TO SUIT 5.5KW INSTANT WATER HEATER OF M/S RACOLD (MODEL NO. AURES SM 5.5 CB 230V WH IN).
 3. QUARTER TURN LOCK SHALL BE PROVIDED IN COVER (PART NO. 220-9001, 220-9102, 220-0502 OF M/S DIRAK OR EQUIVALENT MAKE).
 2. ENCLOSURE SHALL BE MADE WITH 1.2MM. THICK STAINLESS STEEL TO IS:6911(LATEST EDITION) GRADE-SS304S1 WITH SURFACE FINISHING NO.6, TAB-8.
 1. ALL DIMENSIONS IN MM.

WELD LENGTH	ITEM	DESCRIPTION & DIMENSIONS	ASSEMBLY	DETAIL DRG	MATL. & SPEC.	REMARKS
NIL	M	ELECTRICAL	SUPERSEDES: NIL			
WEIGHT	FILE	D:\BKRM\sked\sked-894.prt				
NIL	KG	OGA OF ENCLOSURE FOR 5.5kW INSTANT WATER HEATER				
S. AREA	M ²	RAIL COACH FACTORY, KAPURTHALA				
NIL	M ²	रेलकोच फैक्टरी कपूरथला				
LENGTH / DIA	M	IRS				
NIL	M	DRG. NO. SKED-894				
WIDTH / THICK	M	BY DCE/D&D				
NIL	M	BY DCE/D&D				
HEIGHT	M	ALT. [] NIL [] SIZE [] SHEET []				

DETAIL DRGS STARTING WITH "LI" ARE INTERNAL REFERENCE LISTS ONLY AND ARE NOT FOR ISSUE.
 THIS IS A COMPUTER GENERATED DRAWING. ANY MANUAL ALTERATION SHALL AUTOMATICALLY RENDER IT INVALID.
 FOR UNTOLERANCED DIMENSIONS REFER MDG0008 DATE OF FIRST ISSUE 24/04/2023