

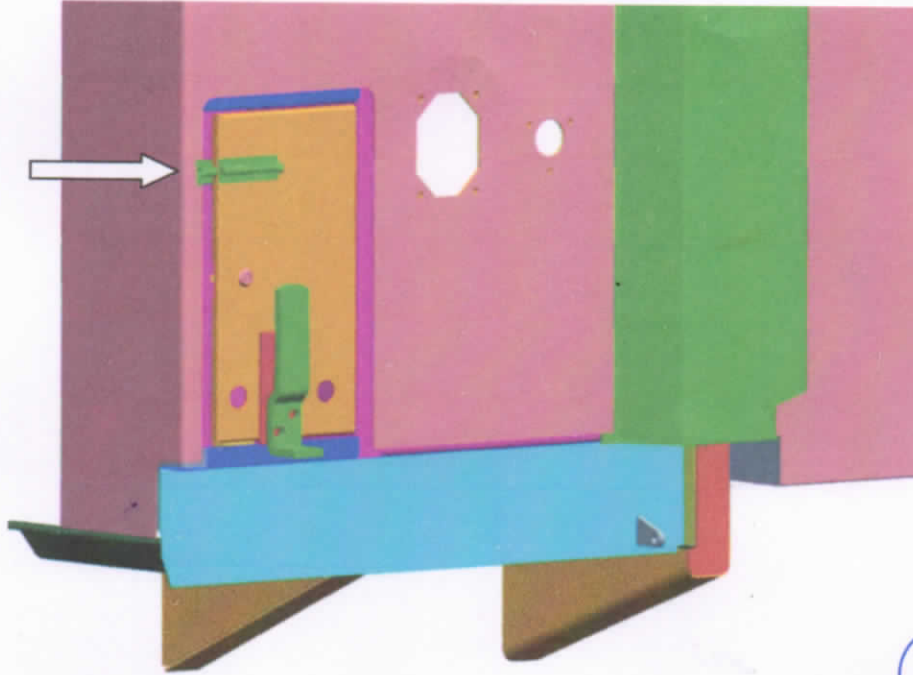
रेल डिब्बा कारखाना, कपूरथला
RAIL COACH FACTORY, KAPURTHALA

MD46131

Dated: 22/07/2024

Corrigendum to CAI/RCF/MECH/LHB/072 (enclosed)

In partial modification to CAI no. CAI/RCF/MECH/LHB/072 Rev Nil issued on 28.06.2024. An additional tower bolt to EFT Cover has been provided. Revised drawing no LP10391 Alt 'a' is enclosed.



For General Manager (Mech)

Encl:

- i) Drawing no. LP10391 alt-a.
- ii) CAI/RCF/MECH/LHB/072 Rev Nil

Copy to:

The General Manager/Mechanical, Mechanical Branch, HQ Office:

- 1. Central Railway, Mumbai CST-400001
- 2. Eastern Railway, Fairlie Place, Kolkata-700001
- 3. Eastern Railway, Baroda House, New Delhi-110001
- 4. North Eastern Railway, HQ Office, Gorakhpur-273001
- 5. Northeast Frontier Railway, Maligaon, Guwahati-781011

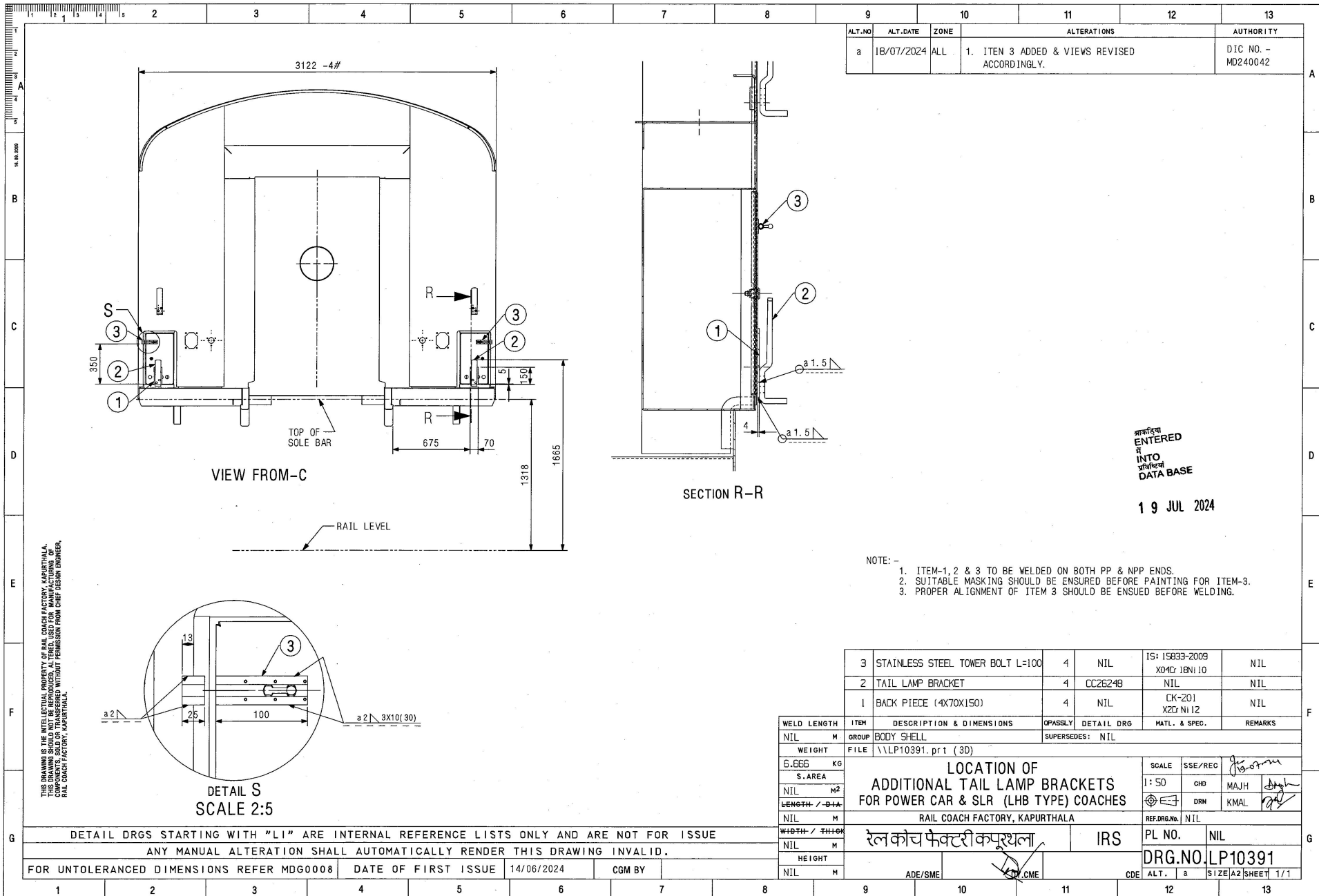
6. Southern Railway, NGO Annexe, Park Town, Chennai-600003
7. South Central Railway, Rail Nilayam, Secunderabad-500371
8. South Eastern Railway, Garden Reach, Kolkata-700 043
9. Western Railway, Churchgate, Mumbai-400 020
10. West Central Railway, HQ Office, Jabalpur (MP)-462 001
11. East Central Railway, HQ Office, Hajipur-844 101
12. East Coast Railway. HQ Office, Rail Vihar, B-2, Chandrasekharpur, Bhubaneswar-751 001.
13. South Western Railway, New Zonal Headquarters Office, Gadag Road, Hubli-580 023
14. North Western Railway, HQ office, Jaipur-302 006
15. North Central Railway, HQ office, Allahabad-211 001
16. South East Central Railway, Bilaspur (Chhattisgarh)-495 004

The Chief Workshop Manager, Carriage & Wagon Workshop:

17. Matunga, Central Railway, Mumbai-400 019.
18. Bhopal, West Central Railway, Nishatpura, M.P.-462 001.
19. Lilluah, Eastern Railway, Howrah-711 204.
20. Gorakhpur, North Eastern Railway-273 001.
21. New Bongaigaon , North East Frontier Railway-783 381.
22. Perambur, Southern Railway, Chennai-600 023
23. Golden Rock, Tiruchirapalli-620 004.
24. Ashokapuram, South Western Railway, Mysore South-570 008.
25. Tirupati, South Central Railway-517 506.
26. Hubli, South Westren Railway-580020
27. Mancheswar, East Coast Railway, Bhubaneswar-751 017.
28. Kharagpur, South Eastern Railway-721 301.
29. Lower Parel, N.M.Joshi Marg, Western Railway, Mumbai-400 013.
30. Jagadhari, Northern Railway-135 003.
31. Alambagh, Northern Railway, Lucknow-226 005.
32. Lallaguda, South Central Railway, Secunderabad-500 017.
33. Western Railway, Ajmer, Rajasthan.
34. North East Frontier Railway, Dibrugarh, Assam-786 001

Copy to: for kind information

1. EDME (W), Railway Board, New Delhi-110001.
2. EDME (Coaching), Railway Board, New Delhi-110001.
3. Director General/Carriage, RDSO, Manak Nagar, Lucknow-226 011.



रेल डिब्बा कारखाना, कपूरथला
RAIL COACH FACTORY, KAPURTHALA

MD46131

Dated : 28/06/2024

COACH ALTERATION INSTRUCTIONS

1. **CAI No.** : CAI/RCF/MECH/LHB/072.
2. **Group** : Tail Lamp Bracket on End wall of LHB SLR, Power Car & LVPH.
3. **Description** : Provision of two additional Tail Lamp Bracket at height as in ICF coaches .
4. **Authority for CAI** : Railway board Letter No.2024/Safety(DM)/18/1 Dt. 28.05.2024.
5. **Drawing Numbers** : Drg No LP10391, CC26248
6. **Reason for modification:** To ease out operational issues, additional Tail lamp brackets are welded at the height of 1665mm, on EFT cover. This modification can be retro-fitted on existing coaches. A trial has been also made at RCF, pictures as given below.



7. **Detail of modifications :**
 - 7.1. Incorporation of additional welded type Tail Lamp Bracket in addition to Bolted type Bracket.
8. **Coaches concerned:** LHB SLR & Power Car , LVPH coach.
9. **Implementation stage:** Railway may implement at their convenience i.e whether in coaching depot or workshop. This may be fitted on all LHB coaches, if required.

mmul.
28/6/24.
for General Manager (Mech)

Encl: Drg No LP10391, CC26248

The General Manager/Mechanical, Mechanical Branch, HQ Office:

1. Central Railway, Mumbai CST-400001
2. Eastern Railway, Fairlie Place, Kolkata-700001
3. Eastern Railway, Baroda House, New Delhi-110001
4. North Eastern Railway, HQ Office, Gorakhpur-273001
5. Northeast Frontier Railway, Maligaon, Guwahati-781011
6. Southern Railway, NGO Annexe, Park Town, Chennai-600003
7. South Central Railway, Rail Nilayam, Secunderabad-500371
8. South Eastern Railway, Garden Reach, Kolkata-700 043
9. Western Railway, Churchgate, Mumbai-400 020
10. West Central Railway, HQ Office, Jabalpur (MP)-462 001
11. East Central Railway, HQ Office, Hajipur-844 101
12. East Coast Railway. HQ Office, Rail Vihar, B-2, Chandrasekharpur, Bhubaneswar-751 001.
13. South Western Railway, New Zonal Headquarters Office, Gadag Road, Hubli-580 023
14. North Western Railway, HQ office, Jaipur-302 006
15. North Central Railway, HQ office, Allahabad-211 001
16. South East Central Railway, Bilaspur (Chhattisgarh)-495 004

The Chief Workshop Manager, Carriage & Wagon Workshop:

17. Matunga, Central Railway, Mumbai-400 019.
18. Bhopal, West Central Railway, Nishatpura, M.P.-462 001.
19. Lilluah, Eastern Railway, Howrah-711 204.
20. Gorakhpur, North Eastern Railway-273 001.
21. New Bongaigaon, North East Frontier Railway-783 381.
22. Perambur, Southern Railway, Chennai-600 023
23. Golden Rock, Tiruchirapalli-620 004.
24. Ashokapuram, South Western Railway, Mysore South-570 008.
25. Tirupati, South Central Railway-517 506.
26. Hubli, South Western Railway-580020
27. Mancheswar, East Coast Railway, Bhubaneswar-751 017.
28. Kharagpur, South Eastern Railway-721 301.
29. Lower Parel, N.M.Joshi Marg, Western Railway, Mumbai-400 013.
30. Jagadhari, Northern Railway-135 003.
31. Alambagh, Northern Railway, Lucknow-226 005.
32. Lallaguda, South Central Railway, Secunderabad-500 017.
33. Western Railway, Ajmer, Rajasthan.
34. North East Frontier Railway, Dibrugarh, Assam-786 001

Copy to:

1. EDME (W), Railway Board, New Delhi-110001.
2. EDME (Coaching), Railway Board, New Delhi-110001.
3. Director General/Carriage, RDSO, Manak Nagar, Lucknow-226 011.

