

रेल डिब्बा कारखाना, कपूरथला
Rail Coach Factory, Kapurthala

(Coach Alteration Instruction No. CAI/RCF/MECH/LHB/064)

No. MD46111

Date 22.05.2024

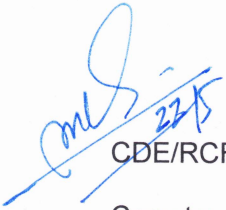
1. Description Retro fitment of locking arrangement of isolating cock of Aspiration type smoke/ Fire detection with Alarm system in LHB AC Coaches.
2. Ref As per instructions of DG/Safety, Railway Board during visit to RCF, Kapurthala on 10.04.24.
3. Reason for alteration To prevent the tampering of isolating cock of Aspiration type smoke/ Fire detection with Alarm system in LHB type Coaches.
4. Coach type & Applicability of Drawing Number All LHB AC coaches.
5. To be carried out

✓ A	B
Tick A or B as applicable	

- A. Modifications shall be implemented immediately by user Rlys.
B. Modifications shall be implemented by user Rlys. as and when convenient.

6. Special Instructions:
 - i. Bracket should be properly clamped on brake pipe to prevent the unauthorized movement of lever of isolating cock.
 - ii. All other required items already incorporated in the drawing as provided in MI008044.

Enclosure: Drawing No's: MI008044 rev 'Nil'


22/5

CDE/RCF - May kindly approve please.

Copy to:

All Principal Chief Mechanical Engineers of IR
All Chief workshop Engineers of IR

Principal Chief Mechanical Engineers :-

1. Central Railway, Mumbai CST-400 001


25/5/24
For General Manager (Mech.)

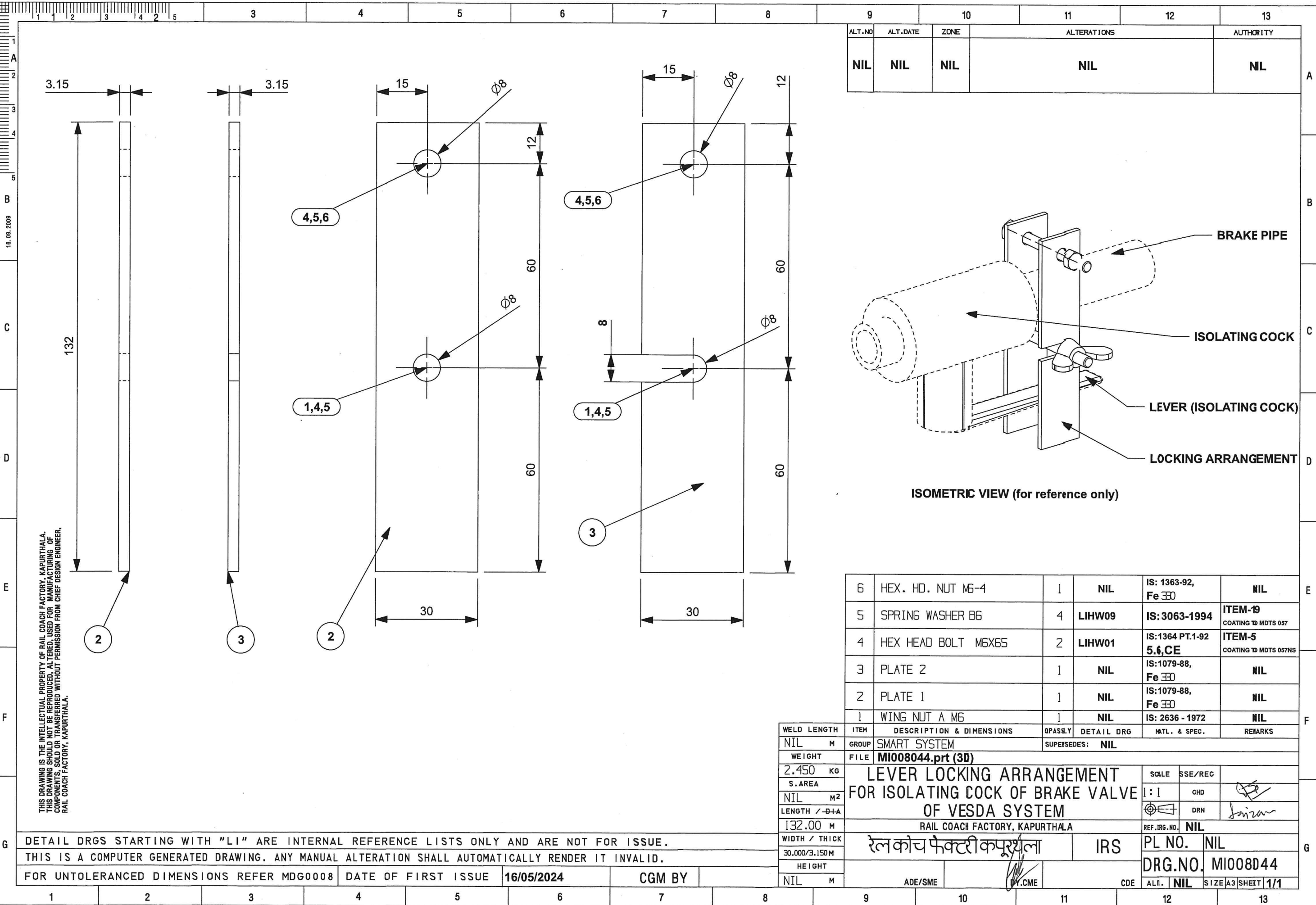
2. W. Railway Churchgate, Mumbai - 400 020
3. Northern Railway, Baroda House, New Delhi- 110 001
4. N.E. Railway Gorakhpur., Gorakhpur-273 001
5. N.F. Railway Maligaon, Guwahati- 781 011
6. S. Railway, Park Town, Chennai- 600 003
7. S. C. Railway, Rail Nilayam, Secunderabad- 500 371
8. S. E. Railway, Garden Reach, Kolkata-700 043
9. Eastern Railway, Fairlie Place, Kolkata-700 001
10. E. Coast. Railway, Bhubhaneswar- 751 016
11. North Central Railway, Allahabad – 211 001
12. North West Railway, Jaipur – 302 001
13. S. E. Central Railway, Bilaspur- 495 004
14. S. W. Railway, Hubli – 580 023
15. West Central Railway, Jabalpur- 482 001
16. East Central Railway, Hazipur- 844 101

Chief Works Engineer:

1. Central Railway, Matunga, Mumbai- 400 019
2. Bhopal, West Central Railway Nishatpura, MP-462 001
3. Lilluah, Eastern Railway, Howrah- 711 204
4. Alambagh , Northern Railway, Lucknow- 226 005
5. Jagadhari, Northern Railway,- 135 003
6. Gorakhpur N. E. Railway- 273 001
7. New Bongaigaon N. East Frontier Railway- 783 381
8. Perambur, Southern Railway, Chennai- 600 023
9. Golden Rock, Southern Railway, Trichy- 620 004
10. Ashokpuram , Southern Railway, Mysore South- 570 008
11. Lallagudda, S. C. Railway Secunderabad- 500 017
12. Hubli, South Western Railway- 580 020
13. Tirupati ,S. C. Railway - 517 506
14. Mancheswar, East Coast Railway, Bhubhaneswar- 751 017
15. Kharagpur, S. E. Railway- 721 301
16. Lower Parel, N.M.Joshi Marg, Western Railway, Mumbai- 400 013
17. Western Railway, Ajmer, Rajasthan
18. North East Frontier Railway, Dibrugarh, Assam-786 001

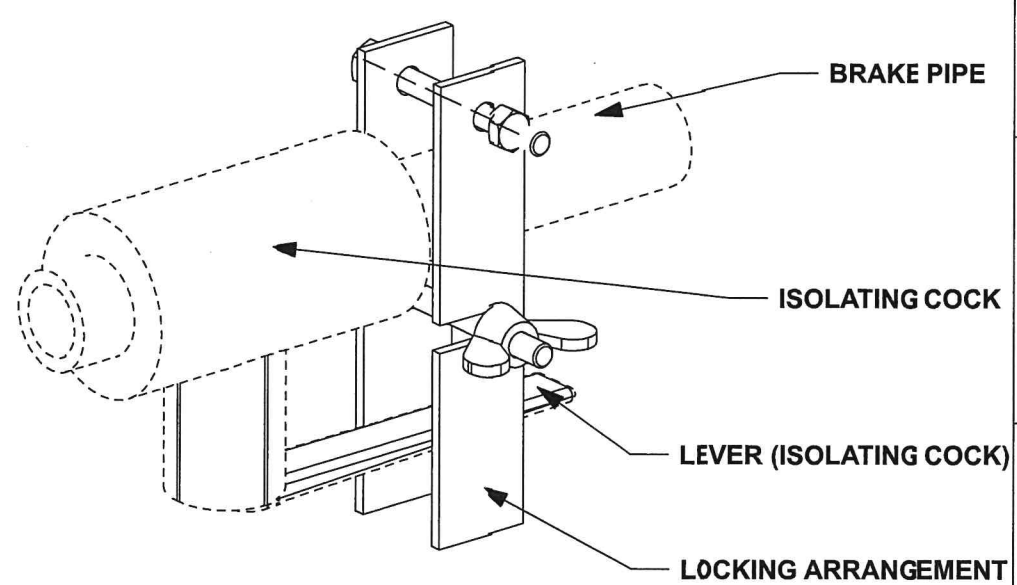
Copy to:

DG/Carriage, RDSO, Manak Nagar, Lucknow- 226 011
EDME (Coaching), Railway Board, New Delhi-110 001
EDME (W), (Coaching), Railway Board New Delhi-110 001



THIS DRAWING IS THE INTELLECTUAL PROPERTY OF RAIL COACH FACTORY, KAPURTHALA. THIS DRAWING SHOULD NOT BE REPRODUCED, ALTERED, USED FOR MANUFACTURING OF COMPONENTS, SOLD OR TRANSFERRED WITHOUT PERMISSION FROM CHIEF DESIGN ENGINEER, RAIL COACH FACTORY, KAPURTHALA.

ALT.NO	ALT.DATE	ZONE	ALTERATIONS	AUTHORITY
NIL	NIL	NIL	NIL	NIL



ISOMETRIC VIEW (for reference only)

6	HEX. HD. NUT M6-4	1	NIL	IS: 1363-92, Fe 300	NIL
5	SPRING WASHER B6	4	LIHW09	IS: 3063-1994	ITEM-19 COATING TO MDTs 057
4	HEX HEAD BOLT M6X65	2	LIHW01	IS: 1364 PT.1-92 5.6, CE	ITEM-5 COATING TO MDTs 057NS
3	PLATE 2	1	NIL	IS: 1079-88, Fe 300	NIL
2	PLATE 1	1	NIL	IS: 1079-88, Fe 300	NIL
1	WING NUT A M6	1	NIL	IS: 2636 - 1972	NIL

WELD LENGTH	ITEM	DESCRIPTION & DIMENSIONS	QPASSLY	DETAIL DRG	MATL. & SPEC.	REMARKS
NIL	M	GROUP	SMART SYSTEM	SUPSEDES:	NIL	
WEIGHT	FILE	MI008044.prt (3D)				
2.450	KG					
S.AREA						
NIL	M ²					
LENGTH / D+A						
132.00	M					
WIDTH / THICK						
30.000/3.150	M					
HEIGHT						
NIL	M					

DETAIL DRGS STARTING WITH "LI" ARE INTERNAL REFERENCE LISTS ONLY AND ARE NOT FOR ISSUE.
THIS IS A COMPUTER GENERATED DRAWING. ANY MANUAL ALTERATION SHALL AUTOMATICALLY RENDER IT INVALID.
FOR UNTOLERANCED DIMENSIONS REFER MDG0008

DATE OF FIRST ISSUE 16/05/2024 CGM BY

SCALE	SSE/REC	
1:1	CHD	
DRN		
REF.DRG.NO.	NIL	
PL NO.	NIL	
DRG.NO.	MI008044	
ALN.	NIL	SIZE A3 SHEET 1/1