

**RAIL COACH FACTORY, KAPURTHALA**  
**(Coach Alteration Instruction)**  
**CAI/RCF/MECH/LHB/063**

**MD21561**

**Date: 25/04/2024**

SN	Description	Details							
1.	Description	Removal of RMPU FRP Top Cover Assembly							
2.	Coach type affected	LHB AC Coaches							
3.	Reason for Modification	Complaints received from User Railways							
4.	Drawing No.	Sr. No.	Drg. No.	Alt.		Sr. No.	Drg. No.	Alt.	
		1.	LE44118	f		5.	LW44697	a	
		2.	LE44325	Nil		6.	LW44698	a	
		3.	LE44326	Nil		7.	LW44699	nil	
		4.	LW44013	c					
5.	Modification	RMPU FRP Top Cover sheet and its belt assembly to be removed from existing LHB AC coaches.							
6.	Implementation Stage	Immediate effect.							
7.	Category of CAI	✓ A		B					
		Tick A or B as applicable.							

- A. Modifications shall be implemented immediately by user Railways.  
B. Modifications shall be implemented by user Railways as & when convenient.

**For General Manager (Mech)**

**Encls:** (07 drgs as listed above)

**All Principal Chief Mechanical Engineers:**

1. Central Railway, Mumbai CST-400 001
2. W. Railway Churchgate, Mumbai - 400 020
3. Northern Railway, Baroda House, New Delhi- 110 001
4. N.E. Railway Gorakhpur. Gorakhpur-273 001
5. N.F. Railway Maligaon, Guwahati- 781 011
6. S. Railway, Park Town, Chennai- 600 003
7. S. C. Railway, Rail Nilayam, Secunderabad- 500 371i
8. S. E. Railway, Garden Reach, Kolkata-700 043
9. Eastern Railway, Fairlie Place, Kolkata-700 001
10. E. Coast. Railway, Bhubaneswar- 751 016
11. North Central Railway, Allahabad — 211 001

12. Northwest Railway, Jaipur — 302 001
13. S. E. Central Railway, Bilaspur- 495 004
14. S. W. Railway, Hubli 580 023
15. West Central Railway, Jabalpur- 482 001
16. East Central Railway, Hazipur- 844 101

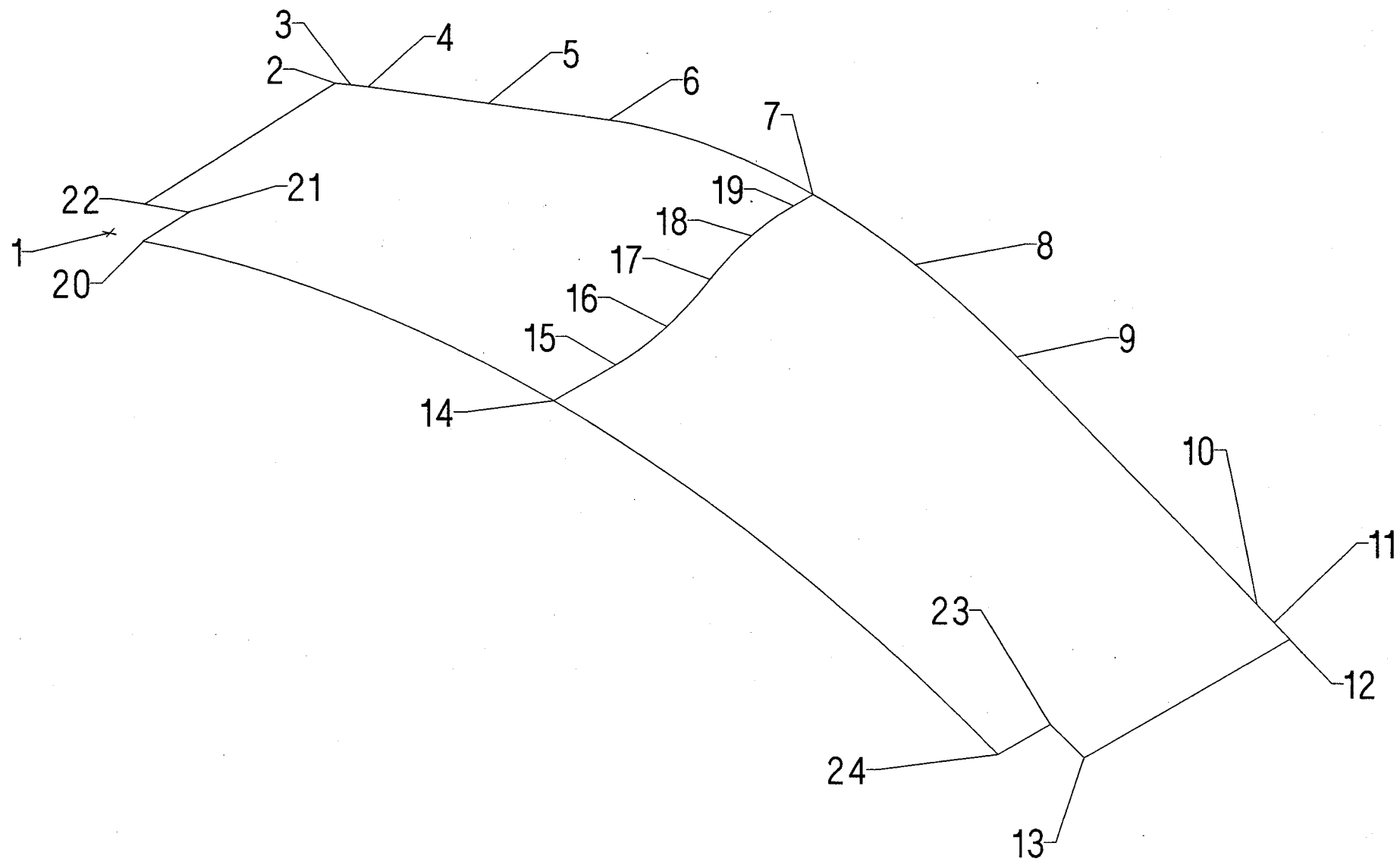
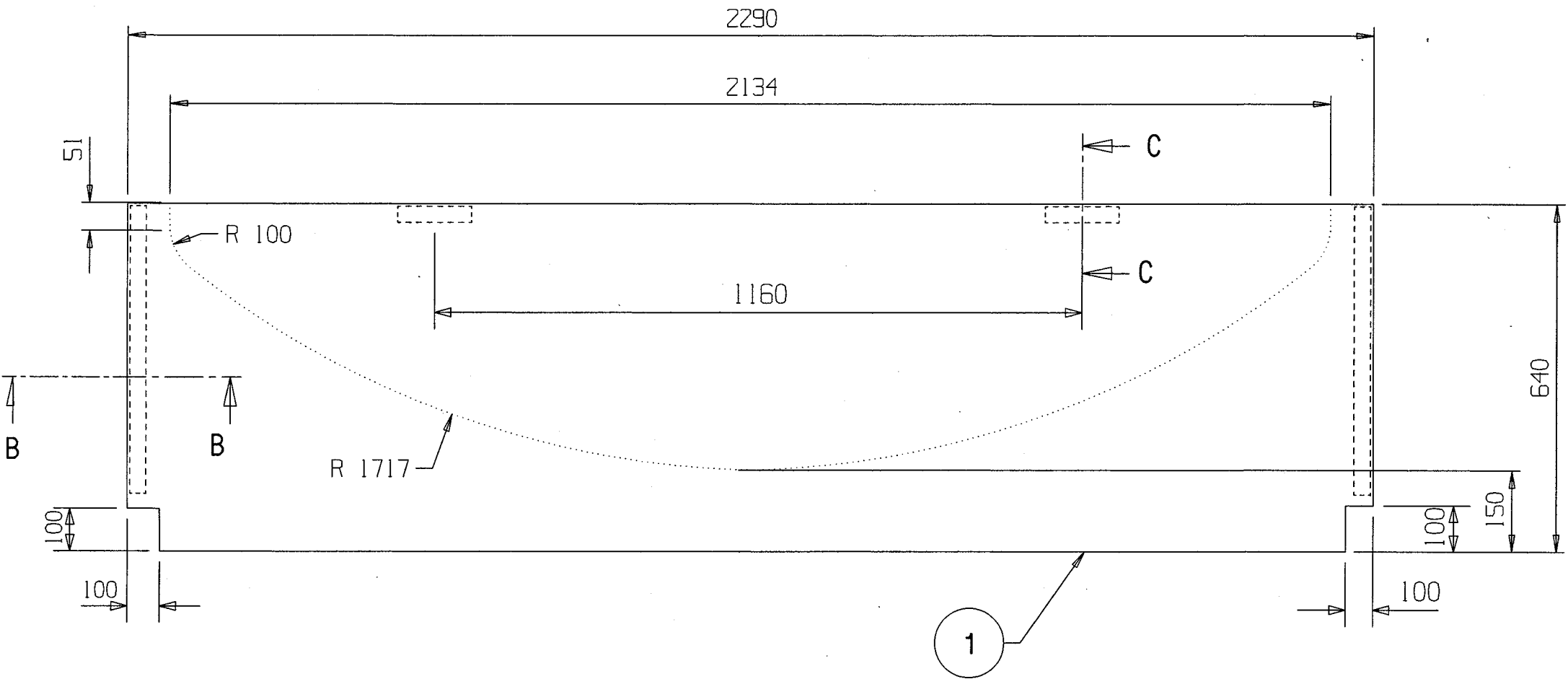
**All Chief Works Engineers:**

1. Central Railway, Matunga, Mumbai- 400 019
2. Bhopal, West Central Railway Nishatpura, MP-462 001
3. Lilluah, Eastern Railway, Howrah- 711 204
4. Alambagh, Northern Railway, Lucknow- 226 005
5. Jagadhari, Northern Railway, - 135 003
6. Gorakhpur N. E. Railway- 273 001
7. New Bongaigaon N. East Frontier Railway- 83 381 8, Perambur, Southern Railway, Chennai- 600 023
8. Golden Rock, Southern Railway, Trichy- 620 004
9. Ashokpuram , Southern Railway, Mysore South- 570 008
10. Lallagudda, S. C. Railway Secunderabad- 500 017
11. Hubli, South Western Railway- 580 020
12. Tirupati, S. C. Railway - 517 506
13. Mancheswar, East Coast Railway, Bhubaneswar- 751 017
14. Kharagpur, S. E. Railway- 721 301
15. Lower Parel, N.M. Joshi Marg, Western Railway, Mumbai- 400 013
16. Western Railway, Ajmer, Rajasthan
17. North East Frontier Railway, Dibrugarh, Assam-786 001

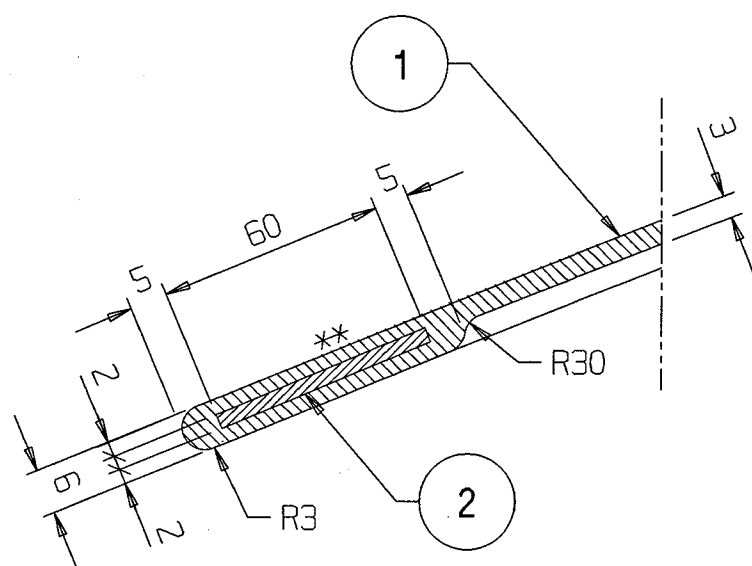
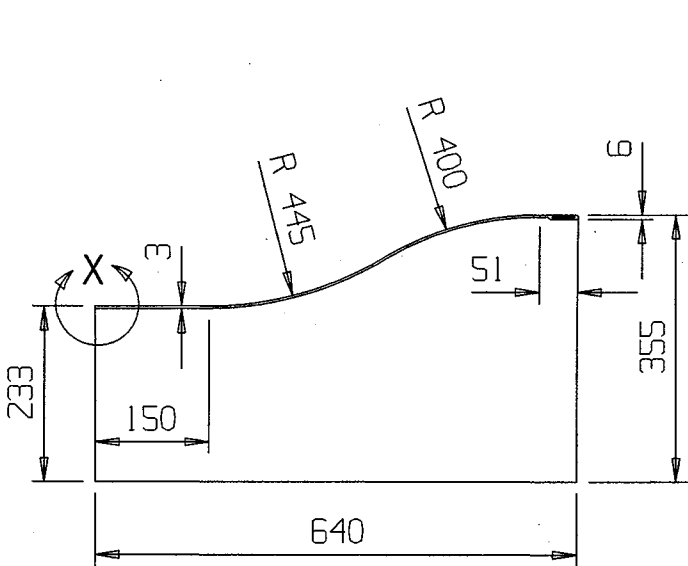
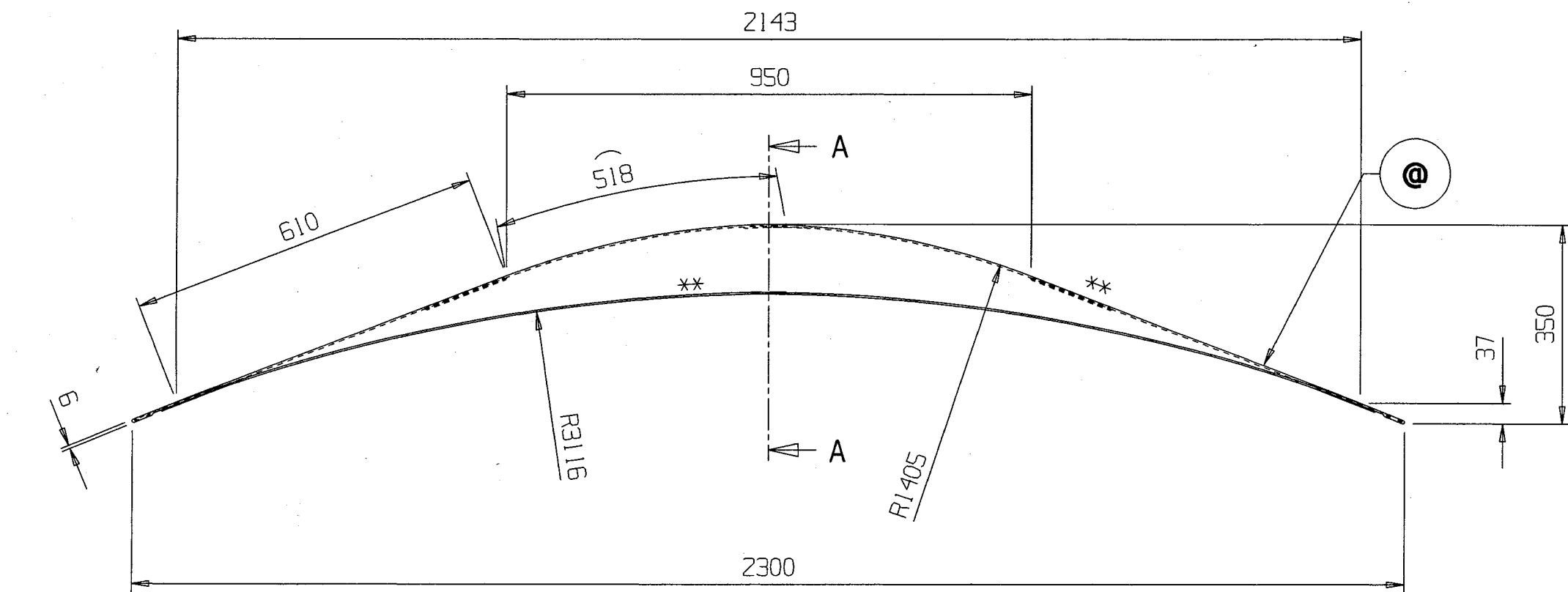
**Copy to:**

1. DG/Carriage, RDSO, Manak Nagar, Lucknow- 226 011
2. EDME (Coaching), Railway Board, New Delhi-110 001
3. EDME (W), (Coaching), Railway Board New Delhi-110 001
4. GM (Mech), Modern Coach Factory, Rae Bareilly-229120
5. GM (Mech), Integral Coach Factory, Chennai-600038

ALT.NO	ALT.DATE	ZONE	ALTERATIONS	AUTHORITY
NIL	NIL	NIL	NIL	NIL

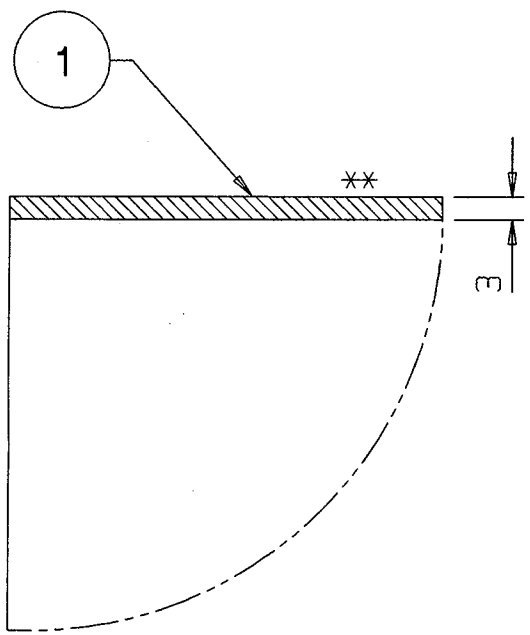


S.NO	X-CO ORD.	Y-CO ORD.	Z-CO ORD.	13	2300.0	100.0	0.0
1	0.0	0.0	0.0	14	1150.0	0.0	232.5
2	0.0	640.0	0.0	15	1150.0	150.5	232.5
3	40.5	640.0	16.5	16	1150.0	270.0	249.0
4	81.0	640.0	32.5	17	1150.0	381.0	297.0
5	121.5	640.0	48.5	18	1150.0	481.0	340.5
6	162.0	640.0	64.5	19	1150.0	588.5	355.0
7	202.5	640.0	80.5	20	0.0	100.0	0.0
8	243.0	640.0	96.5	21	100.0	100.0	0.0
9	283.5	640.0	112.5	22	0.0	100.0	0.0
10	324.0	640.0	128.5	23	2200.0	100.0	0.0
11	364.5	640.0	144.5	24	0.0	2200.0	0.0
12	405.0	640.0	160.5	—	—	—	—

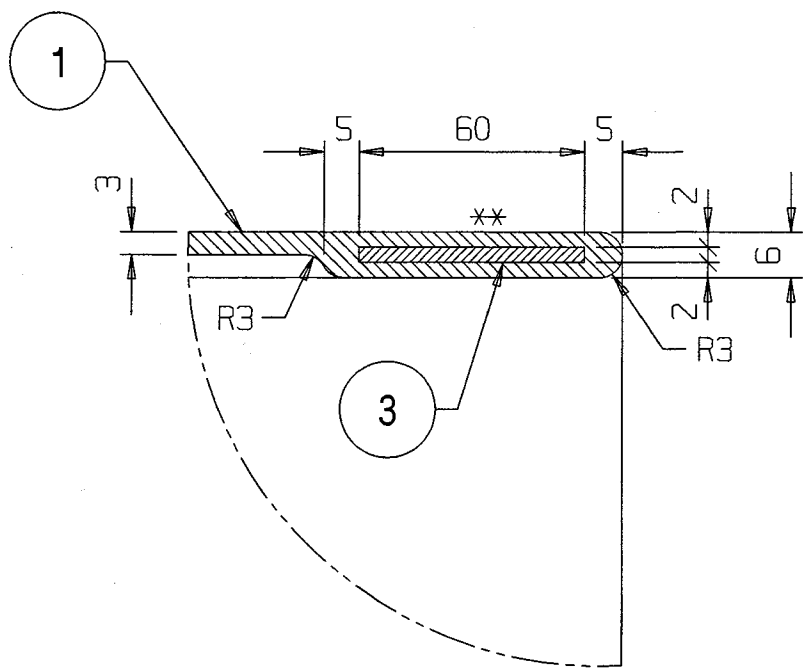


SECTION-AA

SECTION-BB



DETAIL AT 'X'



SECTION-CC

- NOTE :-
1. SURFACES MARKED THUS '\*\*' ARE FINISHED FACES.
  2. TOLERANCES ON DIMENSIONS UPTO 5mm SHALL BE  $\pm 0.1$  TO  $\pm 0.4$ mm.
  3. CORNER RADIUS MAY BE TAKEN AS 'R1', IF NOT SPECIFIED.
  4. COLOUR OF ASSEMBLY SHALL BE AS PER INTERIOR COLOUR SCHEME OF THE COACH.
  5. PILOT SAMPLE SHALL BE GOT APPROVED BEFORE BULK SUPPLY IS MADE.
  6. MANUFACTURER'S NAME & DATE OF MFG. SHALL BE MARKED AT THE LOCATION MARKED THUS 'Ø' IN LETTER OF 5mm HEIGHT.
  7. ITEM NO 1, 2 & 3 SHOULD BE GLUED WITH SUITABLE ADHESIVE.
  8. ITEM NO 2 & 3 SHALL BE PHOSPHATED TO IS: 3618-66, CLASS-C AND SHALL BE EMBEDDED IN FRP AS SHOWN.

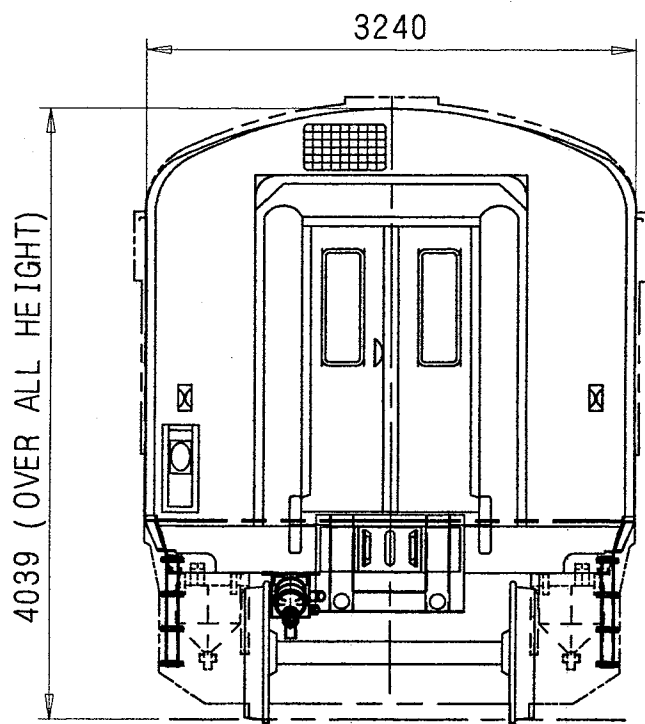
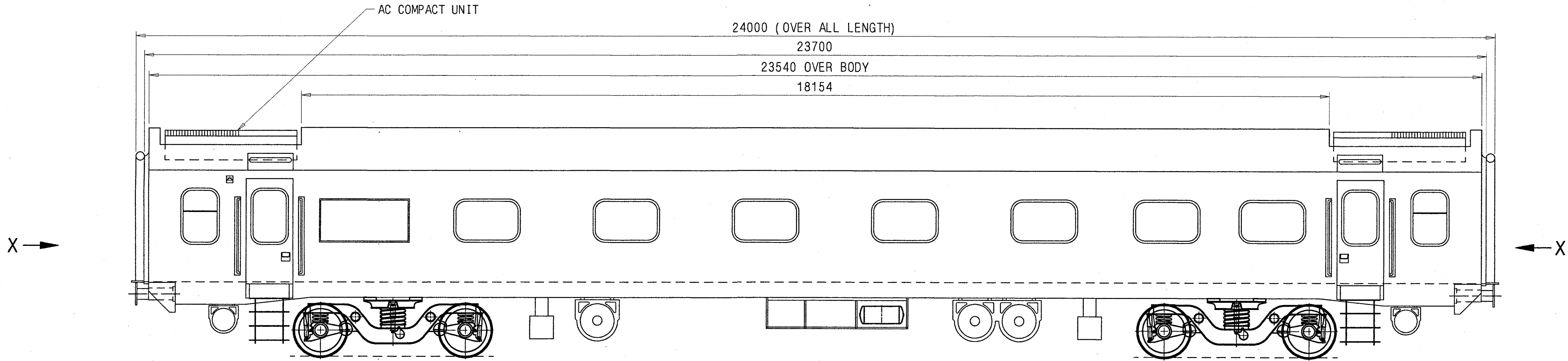
ENTERED  
INTO  
DATA BAS

31 DEC 2018

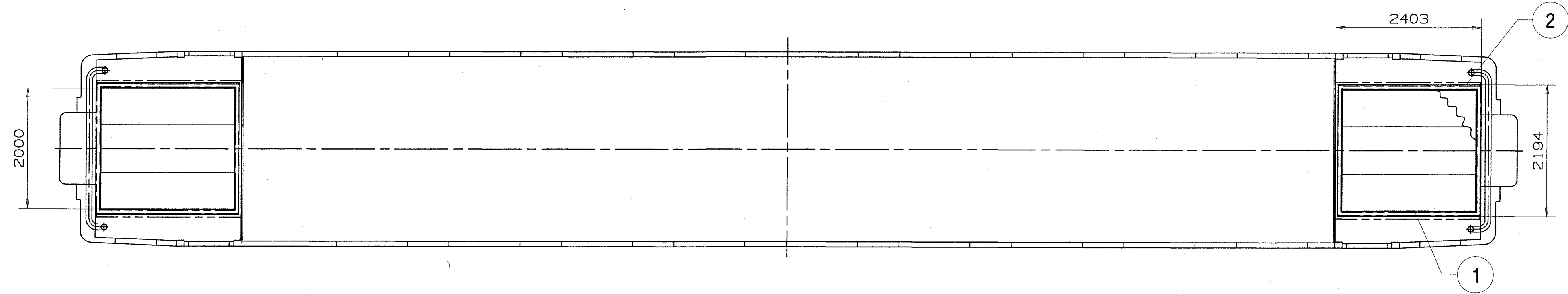
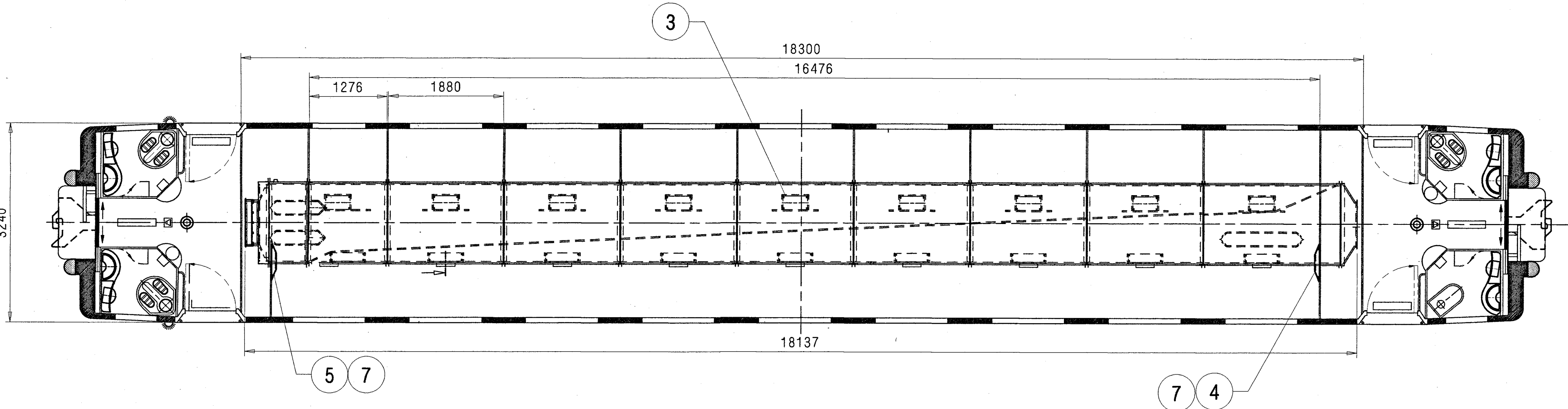
3	BACK PIECE 2X60X150	2	NIL	IS: 5986-1992 Fe-330	*
2	STRIP 2X60X520	2	NIL	IS: 5986-1992 Fe-330	*
1	FRP TOP COVER	1	NIL	MOTS 133	#

WELD LENGTH	ITEM	DESCRIPTION & DIMENSIONS	OPASSLY	DETAIL DRG	MATL. & SPEC.	REMARKS
NIL	M	GROUP	CEILING AND MOULDING	SUPERSEDES:	NIL	
WEIGHT	FILE	\LE44326.prt (2D)				
8.200	KG	FRP TOP COVER				
S.AREA		FOR AC 3-TIER COACHES				
NIL	M <sup>2</sup>	RAIL COACH FACTORY, KAPURTHALA				
LENGTH/DIA		REF.DRG.No. AE44411				
NIL	M	रेलकोच फैक्टरी कपूरथला				
HEIGHT		IRS				
NIL	M	PL NO. NIL				
DRG.NO.		LE44326				
ALT.		NIL				

ALT. NO.	ALT. DATE	ZONE	ALTERATIONS	AUTHORITY
b	29/12/2018	ALL	DRAWING NO. WAS 1 10113.0.29.095.001 FOR ITEM-6 AND ITEM NO. 8 ADDED.	DIC NO. MD180044
c	12/04/2023	ALL	ITEM-6 & 8 DELETED.	MD230023



VIEW FROM-X



ENTERED  
INTO  
DATA BASE

18 APR 2023

8	FIXING OF FRP TOP COVER	2	LW44697	NIL	NIL
7	TEMPERATURE AND HUMIDITY SENSOR	1	1 10113.0. 29.100.001	NIL	NIL
6	EXHAUST AIR WE/SWITCHBOARD CAB	1	LW64236	NIL	NIL
5	CIRC. AIR DUCT COMPL. MOUNT.PPE	1	LW44387	NIL	NIL
4	CIRC. AIR DUCT COMPL. MOUNT.NPPE	1	LW44386	NIL	NIL
3	AIR INLET DUCT COMPLETE MOUNT.	1	LW44385	NIL	NIL
2	TROUGH BELOW AC-PACKAGE UNIT.MOUNT	1	LZ44265	NIL	NIL
1	AIR CONDITIONING PLANT MOUNTING	1	1 10113.0. 29.200.001	NIL	NIL

WELD LENGTH		ITEM	DESCRIPTION & DIMENSIONS		QPASSLY	DETAIL DRG	MATL. & SPEC.		REMARKS	
NIL	M	GROUP	DUCTING		SUPERSEDES: LW44013 ALT b					
WEIGHT	KG	FILE	\\LW44384c.prt (2D)							
AC-SYSTEM ARRANGEMENT FOR AC TWO TIER COACH TO LAYOUT LW90023 (LHB TYPE)							SCALE	SSE/REC	1:50 CHD DUGL	
S.AREA	M <sup>2</sup>								DRN	SONI
RAIL COACH FACTORY, KAPURTHALA							REF.DRG.No. NIL			
रेल कोच फैक्टरी कपूरथला							PL NO. NIL			
IRS							DRG.NO. LW44013			
ADE/SME							CDE	ALT.	C SIZE A1 SHEET 1/1	

THIS DRAWING IS THE INTELLECTUAL PROPERTY OF RAIL COACH FACTORY, KAPURTHALA.  
THIS DRAWING SHOULD NOT BE REPRODUCED, COPIED, OR USED FOR ANY PURPOSE  
WITHOUT THE WRITTEN PERMISSION OF THE DESIGN ENGINEER,  
RAIL COACH FACTORY, KAPURTHALA.

ANY MANUAL ALTERATION SHALL AUTOMATICALLY RENDER THIS DRAWING INVALID.

DETAIL DRGS STARTING WITH "LI" ARE INTERNAL REFERENCE LISTS ONLY AND ARE NOT FOR ISSUE.

FOR UNTOLERANCED DIMENSIONS REFER MDG0008

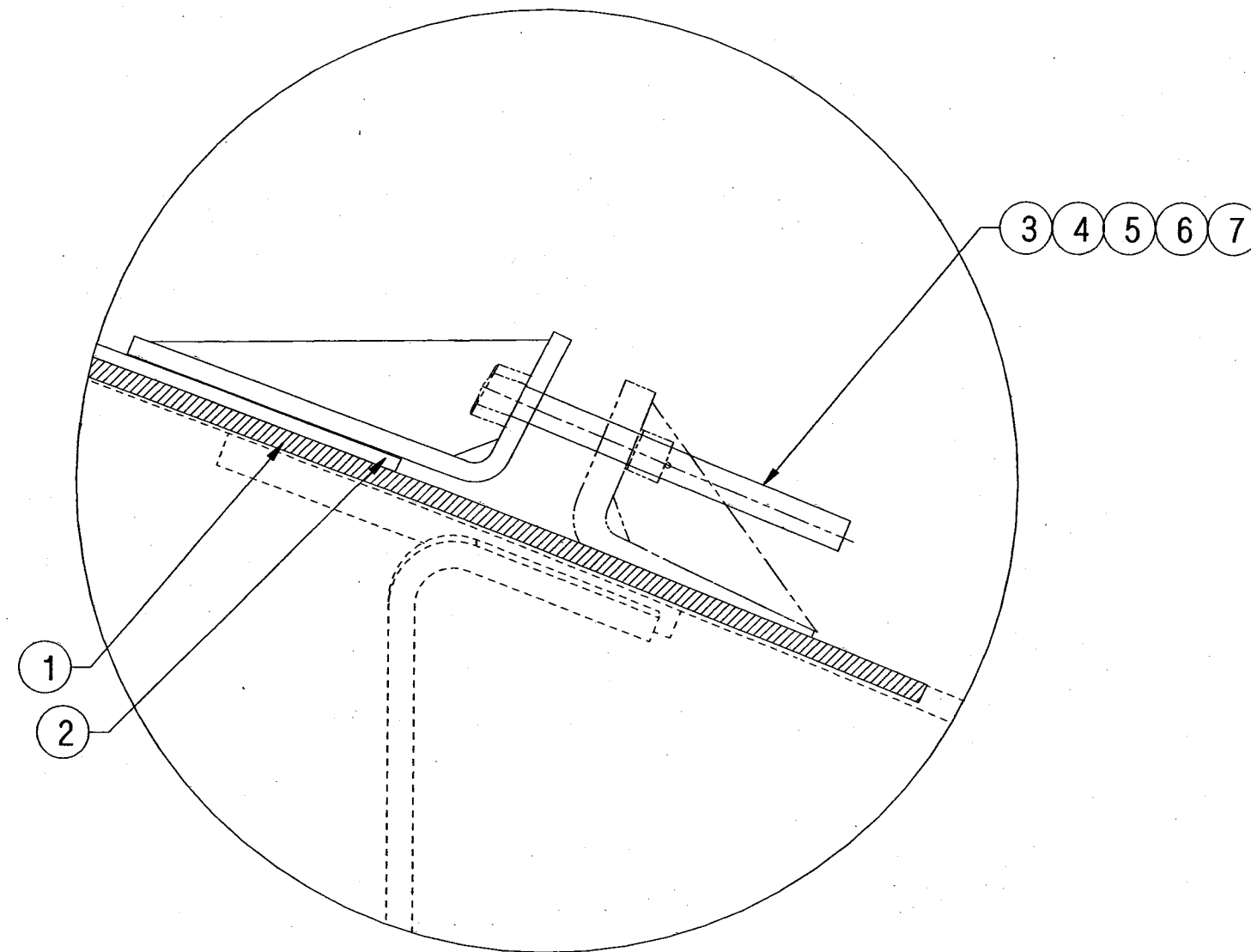
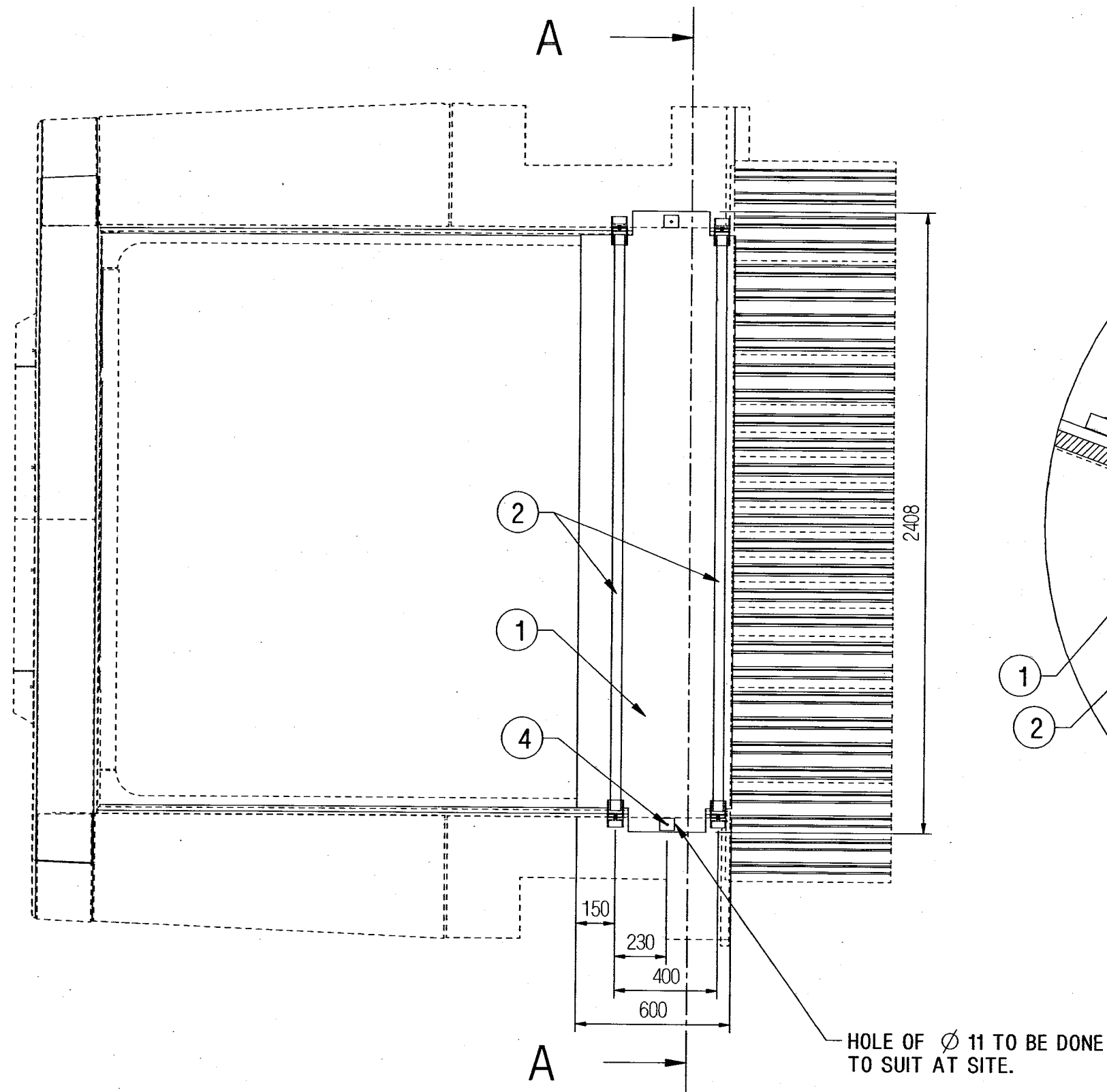
DATE OF FIRST ISSUE

24/12/2003

CGM BY

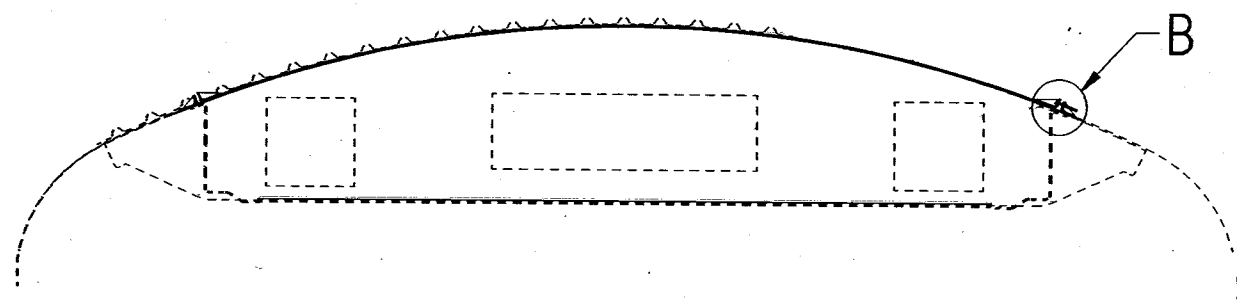
1	2	3	4	5	6	7	8	9	10	11	12	13	14	15	16	17	18	19
---	---	---	---	---	---	---	---	---	----	----	----	----	----	----	----	----	----	----

ALT.NO	ALT.DATE	ZONE	ALTERATIONS	AUTHORITY
a	06/08/2019	F-9	SIZE OF ITEM NO 3 WAS M10X90.	DIC.NO. MD180044



DETAIL AT-B  
SCALE 1:1

ENTERED  
INTO  
DATA BASE  
06 AUG 2019



SECTION A-A

7	SPLIT PIN 2.5X20	4	LIHW06	IS: 549-1974	ITEM-3
6	LOCK WASHER WITH LUG 10.5	4	NIL	IS: 5554-91	NIL
5	STAINLESS STEEL MACHINE WASHER A10.5 (A2 TO IS:1367 PT.14-1984)	4	LIHWSS09	IS: 2016-1967 DIN125	ITEM-6
4	STAINLESS STEEL HEX NUT M10 (A2-70 TO IS:1367 PT-14)	6	NIL	IS: 1364 PT.3-92 ISO-4032	ITEM-3
3	STAINLESS STEEL HEX HEAD SCREW M10X60 (A2-70 TO IS:1367 PT.14-84)	4	NIL	IS: 1364 PT.2-92 ,CE,DIN933	NIL
2	AC UNIT COVER BELT ASSLY	2	LW44699	NIL	NIL
1	FRP TOP COVER	1	LW44698	NIL	NIL

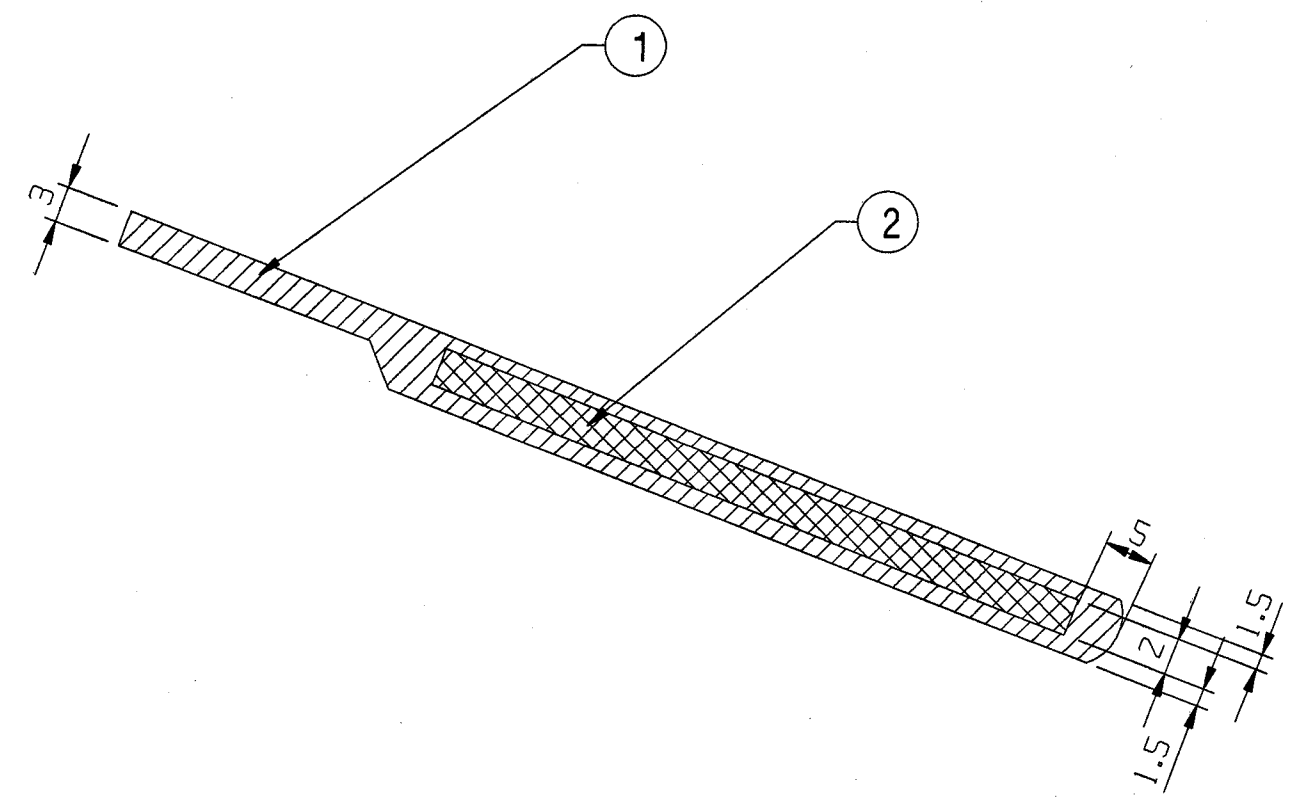
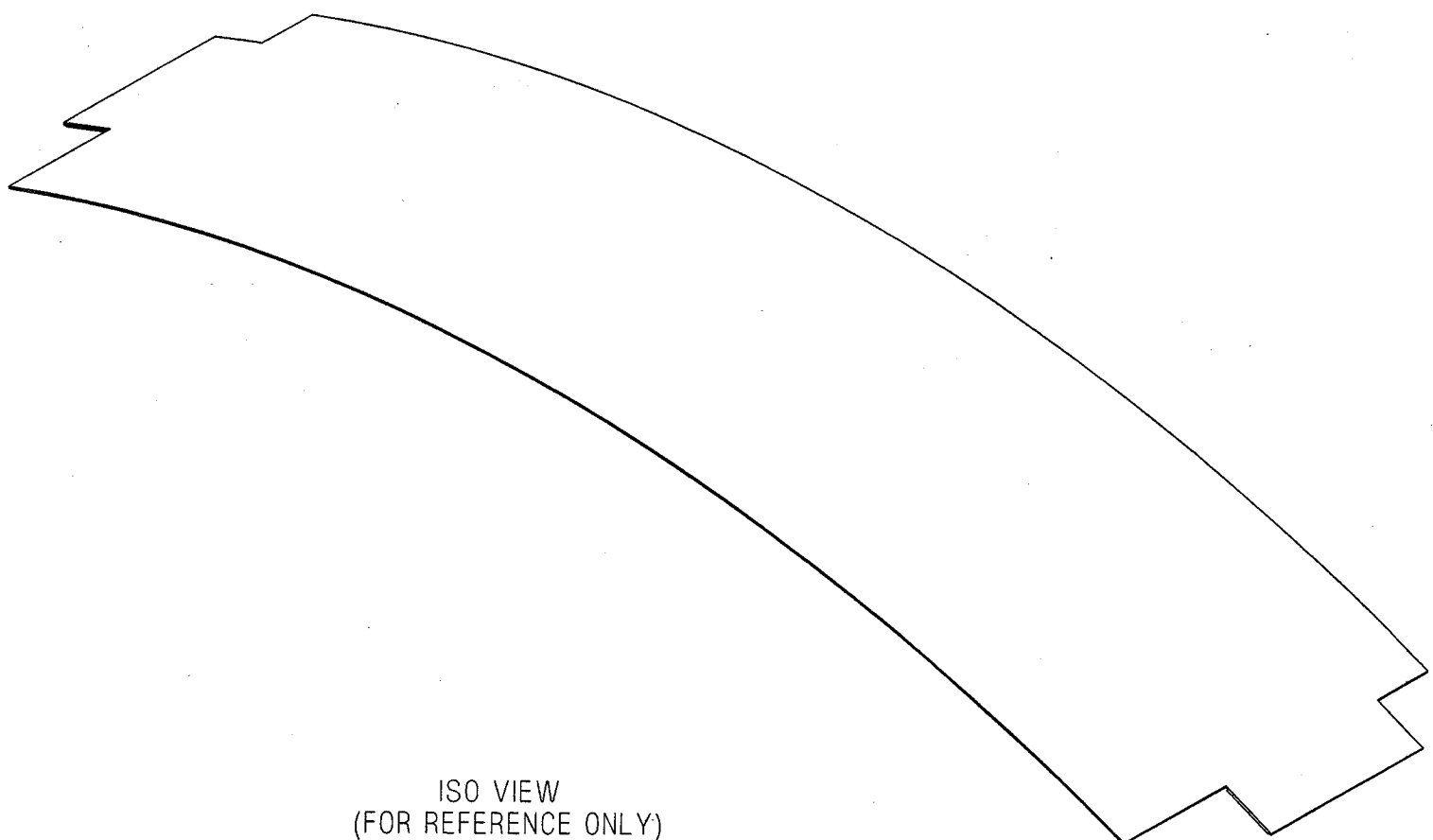
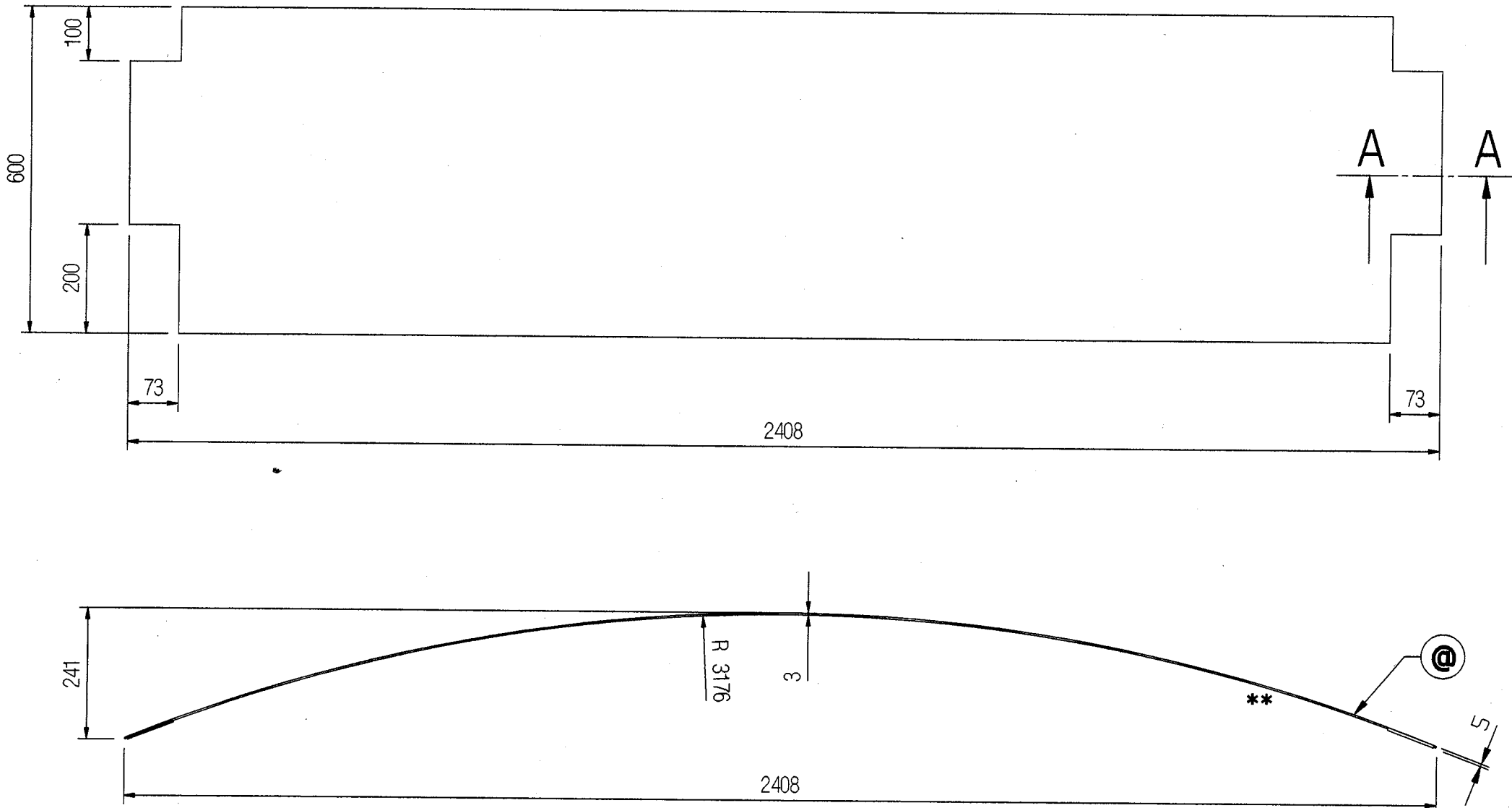
WELD LENGTH	ITEM	DESCRIPTION & DIMENSIONS	QPASSLY	DETAIL DRG	MATL. & SPEC.	REMARKS
NIL	M	GROUP	CEILING & MOULDING	SUPERSEDES: LW44697	ALT NIL	
WEIGHT	FILE	\LW44697a.prt (3D)				
10.700	KG	FIXING OF FRP TOP COVER				
S.AREA						
NIL	M <sup>2</sup>					
LENGTH / DIA						
NIL	M	RAIL COACH FACTORY, KAPURTHALA			REF.DRG.No. NIL	
WIDTH / THICK		रेल कोच फैक्टरी कपूरथला			PL NO. NIL	
NIL	M	IRS			DRG.NO. LW44697	
HEIGHT		ADP/SME			SIZE A2	SHEET 1/1
NIL	M	DY.CME			ALT. a	

THIS DRAWING IS THE INTELLECTUAL PROPERTY OF RAIL COACH FACTORY, KAPURTHALA. THIS DRAWING SHOULD NOT BE REPRODUCED, ALTERED, USED FOR MANUFACTURING OF COMPONENTS, SOLD OR TRANSFERRED WITHOUT PERMISSION FROM CHIEF DESIGN ENGINEER, RAIL COACH FACTORY, KAPURTHALA.

DETAIL DRGS STARTING WITH "LI" ARE INTERNAL REFERENCE LISTS ONLY AND ARE NOT FOR ISSUE  
ANY MANUAL ALTERATION SHALL AUTOMATICALLY RENDER THIS DRAWING INVALID.

FOR UNTOLERANCED DIMENSIONS REFER MDG0008  
DATE OF FIRST ISSUE 21/12/2018  
CGM BY

ALT.NO	ALT.DATE	ZONE	ALTERATIONS	AUTHORITY
a	06/08/2019	B-2	WIDTH OF ITEM 1 WAS 500 mm AND CUTOUT DIMENSION WAS 100X93.	DIC NO. MD180044



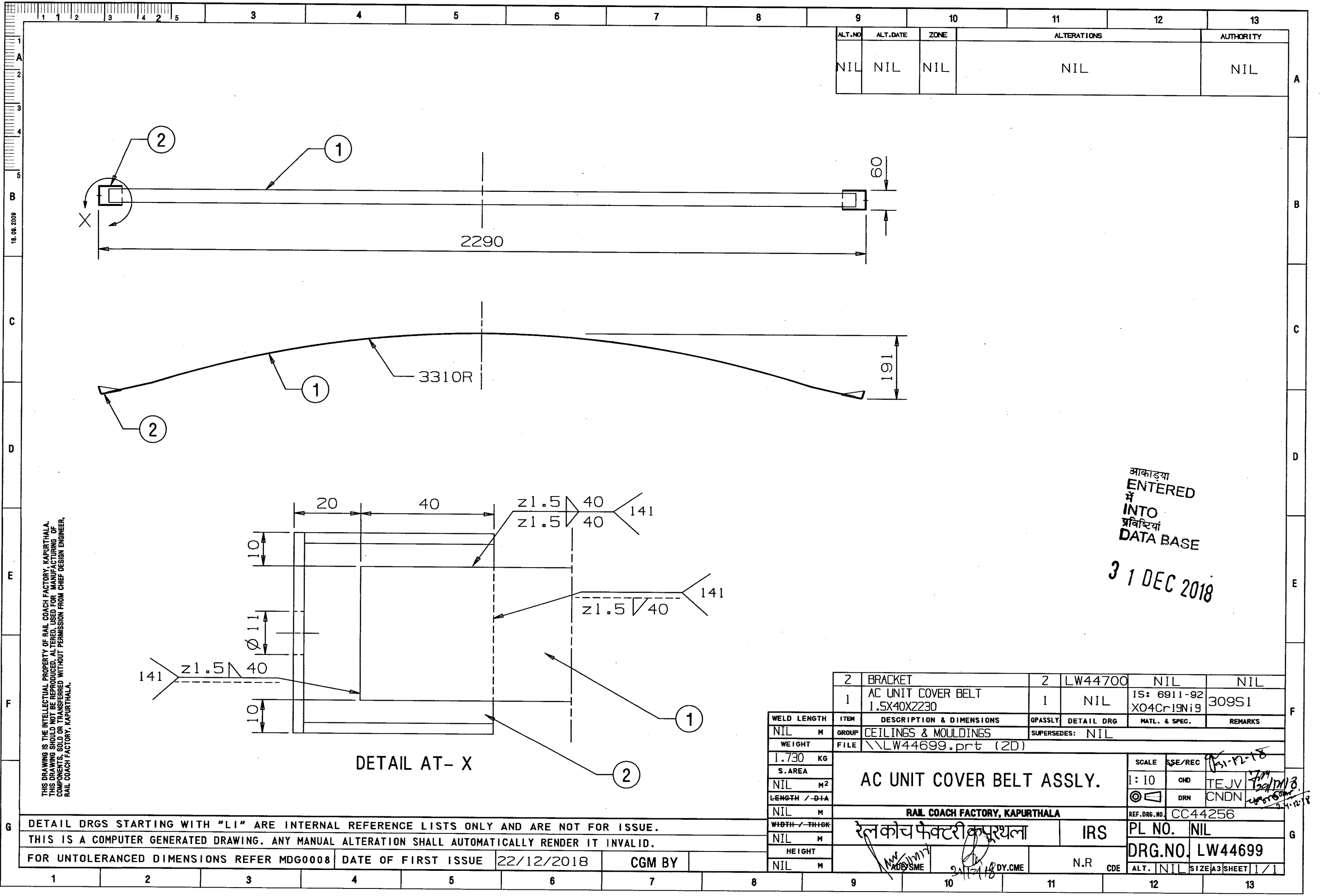
- NOTE :-**
- # 1. SURFACES MARKED THUS '\*\*' ARE FINISHED FACES.
  - 2. TOLERANCES ON DIMENSIONS UPTO 5mm SHALL BE -0.1 TO +0.4mm.
  - 3. CORNER RADIUS MAY BE TAKEN AS 'R1', IF NOT SPECIFIED.
  - 4. COLOUR OF ASSEMBLY SHALL BE AS PER INTERIOR COLOUR SCHEME OF THE COACH.
  - 5. PILOT SAMPLE SHALL BE GOT APPROVED BEFORE BULK SUPPLY IS MADE.
  - 6. MANUFACTURER'S NAME & DATE OF MFG. SHALL BE MARKED AT THE LOCATION MARKED THUS '@' IN LETTER OF 5mm HEIGHT.
  - 7. ITEM NO 1 & 2 SHOULD BE GLUED WITH SUITABLE ADHESIVE.
  - \* 8. ITEM NO 2 SHALL BE PHOSPHATED TO IS: 3618-66, CLASS-C AND SHALL BE EMBEDDED IN FRP AS SHOWN.

आकृति  
ENTERED  
में  
INTO  
प्रविष्टि  
DATA BASE  
06 AUG 2019

2		SHEET 2X90X290		2	NIL		IS: 5986-1992 Fe-330		*				
1		TOP COVER		1	NIL		MDTS 133		#				
WELD LENGTH		ITEM		DESCRIPTION & DIMENSIONS		OPASSLY		DETAIL DRG		MATL. & SPEC.		REMARKS	
NIL		M		GROUP		CEILING & MOULDING		SUPERSEDES:		LW44698 ALT NIL			
WEIGHT		FILE		\\LW44698a.prt (3D)									
6.790		KG											
S.AREA													
NIL		M2											
LENGTH / D+A													
NIL		M											
WIDTH / THICK													
NIL		M											
HEIGHT													
NIL		M											

THIS DRAWING IS THE INTELLECTUAL PROPERTY OF RAIL COACH FACTORY, KAPURTHALA.  
THIS DRAWING SHOULD NOT BE REPRODUCED, ALTERED, USED FOR MANUFACTURING OF COMPONENTS, SOLD OR TRANSFERRED WITHOUT PERMISSION FROM CHIEF DESIGN ENGINEER, RAIL COACH FACTORY, KAPURTHALA.

DETAIL DRGS STARTING WITH "LI" ARE INTERNAL REFERENCE LISTS ONLY AND ARE NOT FOR ISSUE  
ANY MANUAL ALTERATION SHALL AUTOMATICALLY RENDER THIS DRAWING INVALID.  
FOR UNTOLERANCED DIMENSIONS REFER MDG0008



THIS DRAWING IS THE INTELLECTUAL PROPERTY OF RAIL COACH FACTORY, KAPURTHALA. THIS DRAWING SHOULD NOT BE REPRODUCED, ALTERED, USED FOR MANUFACTURING OF COMPONENTS, SOLD OR TRANSFERRED WITHOUT PERMISSION FROM CHIEF DESIGN ENGINEER, RAIL COACH FACTORY, KAPURTHALA.

आकाड्या  
ENTERED  
में  
INTO  
प्रविष्टियां  
DATA BASE  
31 DEC 2018

DETAIL AT- X

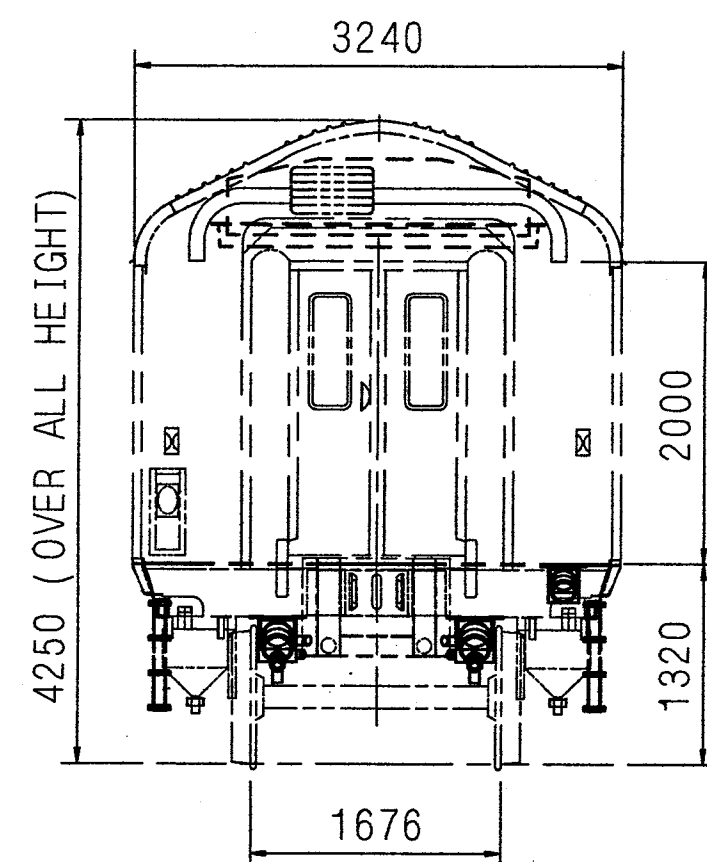
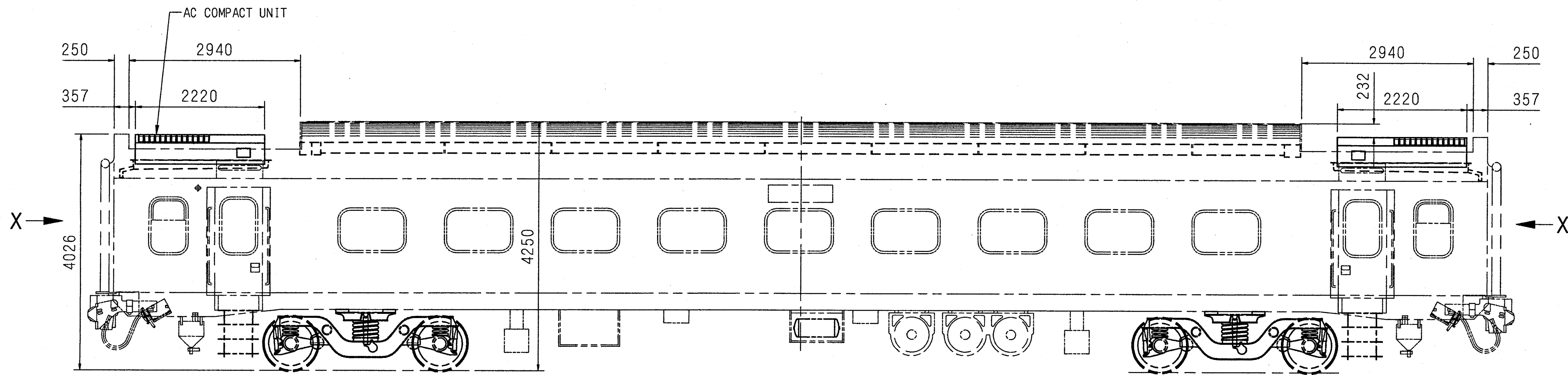
2		BRACKET		2	LW44700	NIL		NIL				
1		AC UNIT COVER BELT 1.5X40X2230		1	NIL		IS: 6911-92 X04Cr19Ni9		309S1			
WELD LENGTH		ITEM	DESCRIPTION & DIMENSIONS		QPASSLY	DETAIL DRG		MATL. & SPEC.		REMARKS		
NIL		M	GROUP	CEILINGS & MOULDINGS		SUPERSEDES: NIL						
WEIGHT		FILE	\\LW44699.prt (2D)									
1.730		KG	AC UNIT COVER BELT ASSLY.					SCALE		SSE/REC	Handwritten notes: 31-12-18, 74, 23/12, 2006	
S.AREA		1: 10						CHD	TEJV			
NIL		M <sup>2</sup>						DRN		CNDN		
LENGTH / -DIA		REF.DRG.NO.						CC44256				
NIL		M	RAIL COACH FACTORY, KAPURTHALA					PL NO.			NIL	
WIDTH / -THICK		रेल कोच फैक्टरी कपूरथला				IRS		DRG.NO.			LW44699	
NIL		M	Handwritten signature				N.R		ALT.			NIL
HEIGHT		Handwritten signature				CDE		SIZE			A3	
NIL		M	Handwritten signature				CDE		SHEET			1 / 1

DETAIL DRGS STARTING WITH "LI" ARE INTERNAL REFERENCE LISTS ONLY AND ARE NOT FOR ISSUE.  
THIS IS A COMPUTER GENERATED DRAWING. ANY MANUAL ALTERATION SHALL AUTOMATICALLY RENDER IT INVALID.  
FOR UNTOLERANCED DIMENSIONS REFER MDG0008

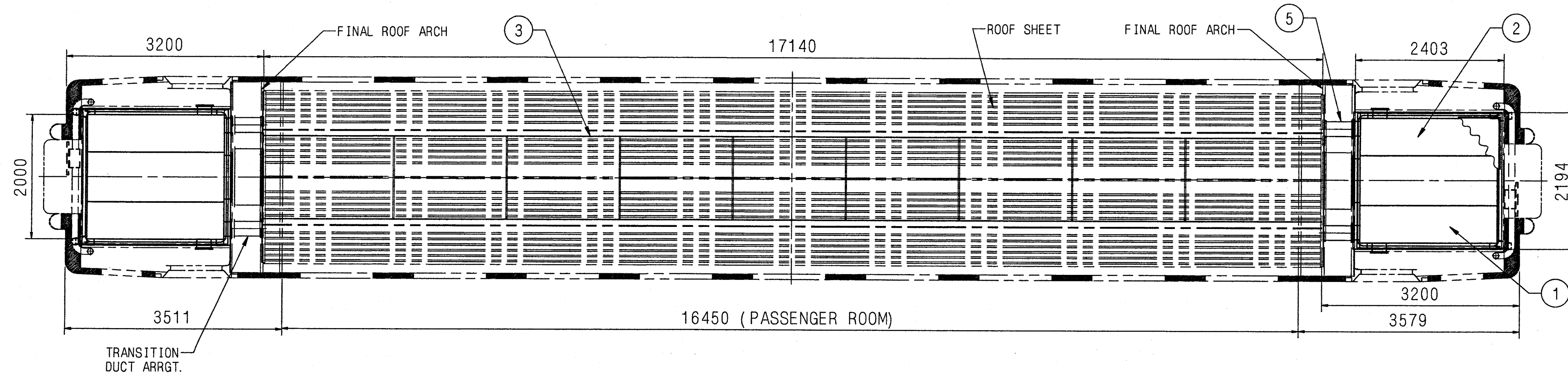
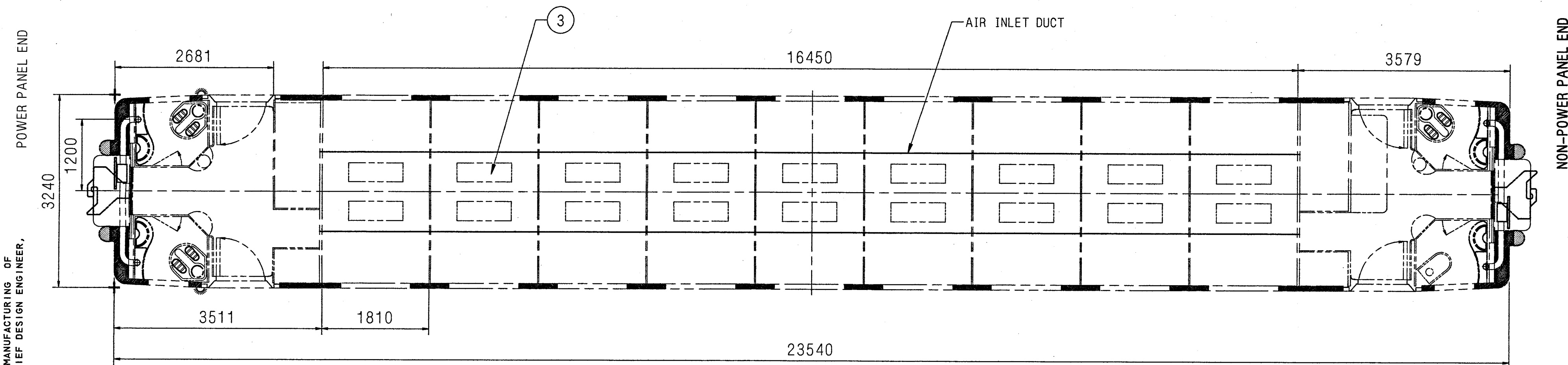
DATE OF FIRST ISSUE 22/12/2018 CGM BY



ALT. NO	ALT. DATE	ZONE	ALTERATIONS	AUTHORITY
e	29/12/2018	ALL	ITEM NO 6 ADDED.	DIC NO. MD180044
f	14/03/2023	ALL	ITEM-4 & 6 DELETED.	MD230016



VIEW FROM-X



ENTERED  
INTO  
DATA BASE

3 APR 2023

6	FIXING OF FRP TOP COVER	2	LE44325	NIL	NIL
5	CIRCULATING AIR SYSTEM	1	LE44070	NIL	NIL
4	EXHAUST AIR VG/SWITCHBOARD CAB	1	LV64236	NIL	NIL
3	AIR INLET DUCT COMPLETE, MOUNTING	1	LE44117	NIL	NIL
2	TROUGH BELOW AC PACKAGE UNIT MOUNTING	1	LE44116	NIL	NIL
1	AIR CONDITION PLANT MOUNTING	1	1 10113.0. 29.200.001	NIL	NIL

WELD LENGTH	ITEM	DESCRIPTION & DIMENSIONS	QPASSLY	DETAIL DRG	MATL. & SPEC.	REMARKS
NIL	M	GROUP	ceiling & moulding	SUPERSEDES: LE44118	ALT e	
WEIGHT	FILE	\\LE44118f.prt(2d)				
445.40	KG					
S.AREA						
NIL	M2					
LENGTH/DIA						
NIL	M					
WIDTH/THICK.						
NIL	M					
HEIGHT						
NIL	M					

AC SYSTEM ARRANGEMENT

FOR AC 3 TIER LHB VARIANT COACH

RAIL COACH FACTORY, KAPURTHALA

रेलकोच फैक्टरी कपूरथला

IRS

PL NO. NIL

DRG.NO. LE44118

SCALE

SSE/REC

1: 50

CHD

DRN

SONI

REF.DRG.No. 1 10113.0.29.000.001

ALT.

i

SIZE

A1

SHEET

1/1

ANY MANUAL ALTERATION SHALL AUTOMATICALLY RENDER THIS DRAWING INVALID.

DETAIL DRGS STARTING WITH "LI" ARE INTERNAL REFERENCE LISTS ONLY AND ARE NOT FOR ISSUE.

FOR UNTOLERANCED DIMENSIONS REFER MDG0008

DATE OF FIRST ISSUE

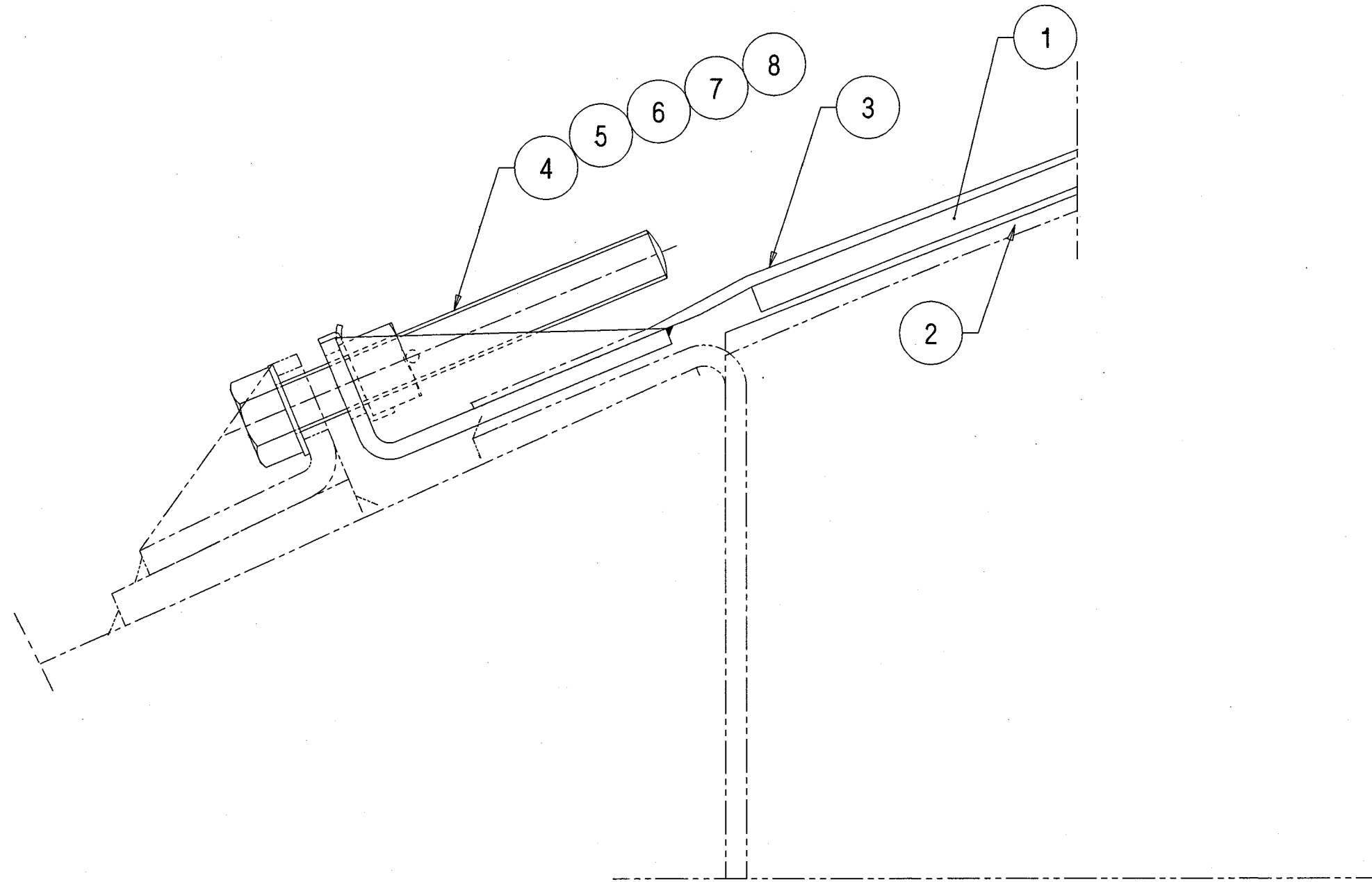
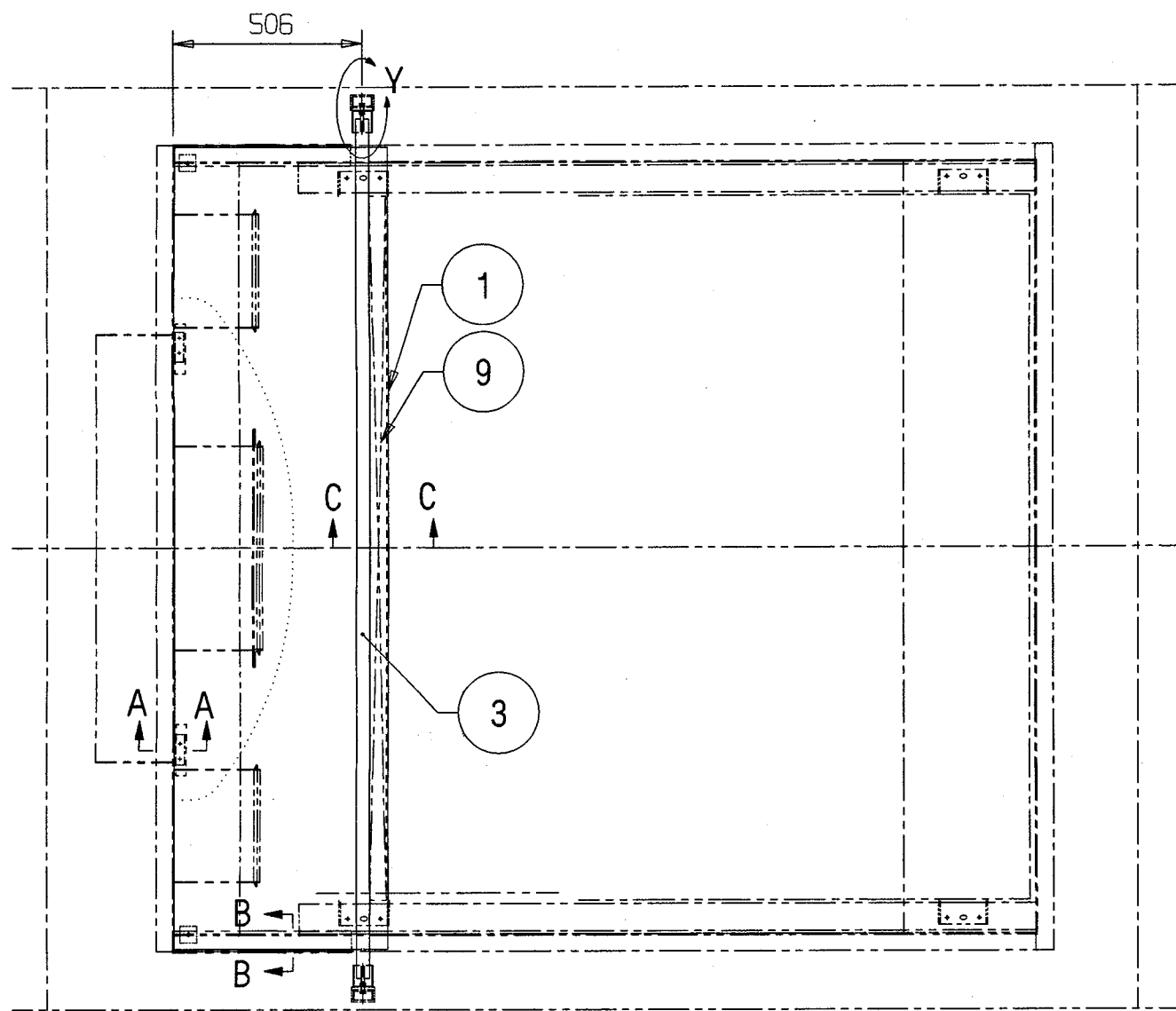
05/09/2001

CGM BY

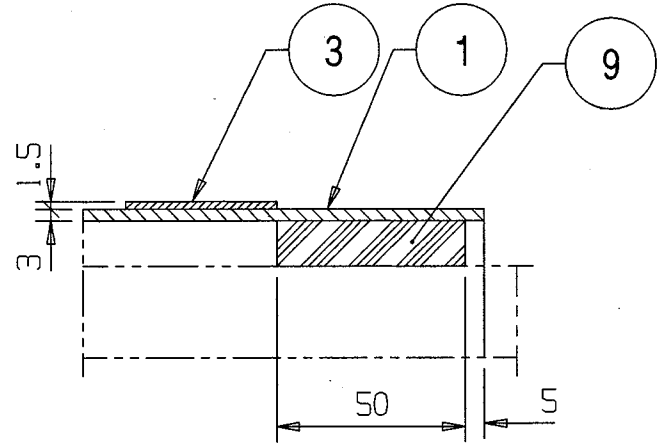
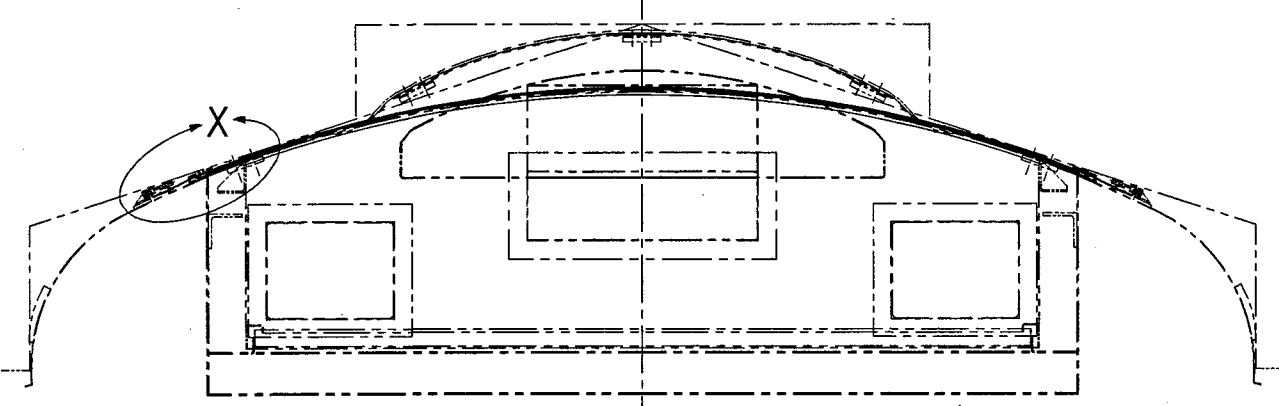
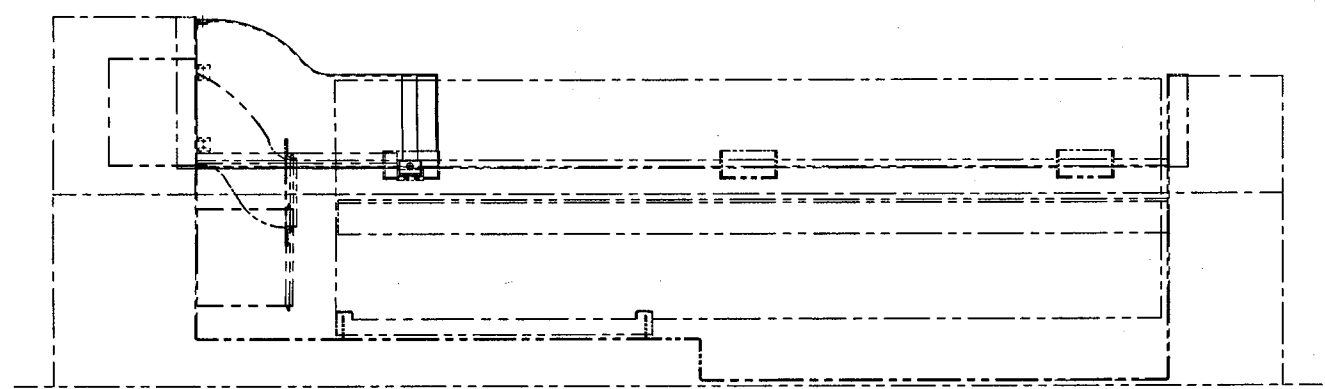
1 2 3 4 5 6 7 8 9 10 11 12 13 14 15 16 17 18 19



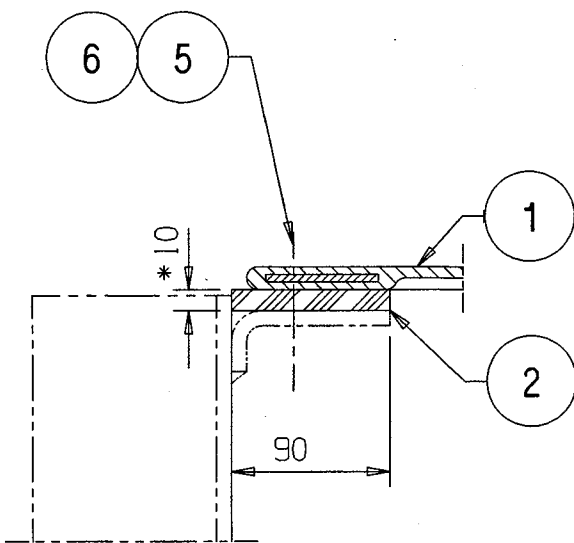
15	16	17	18	19
ALT. NO	ALT. DATE	ZONE	ALTERATIONS	AUTHORITY
NIL	NIL	NIL	NIL	NIL



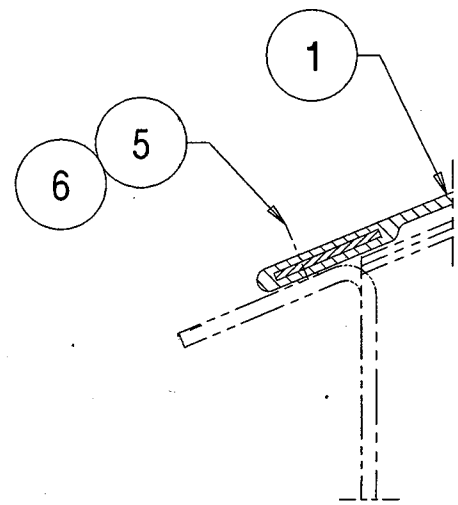
DETAIL AT-X



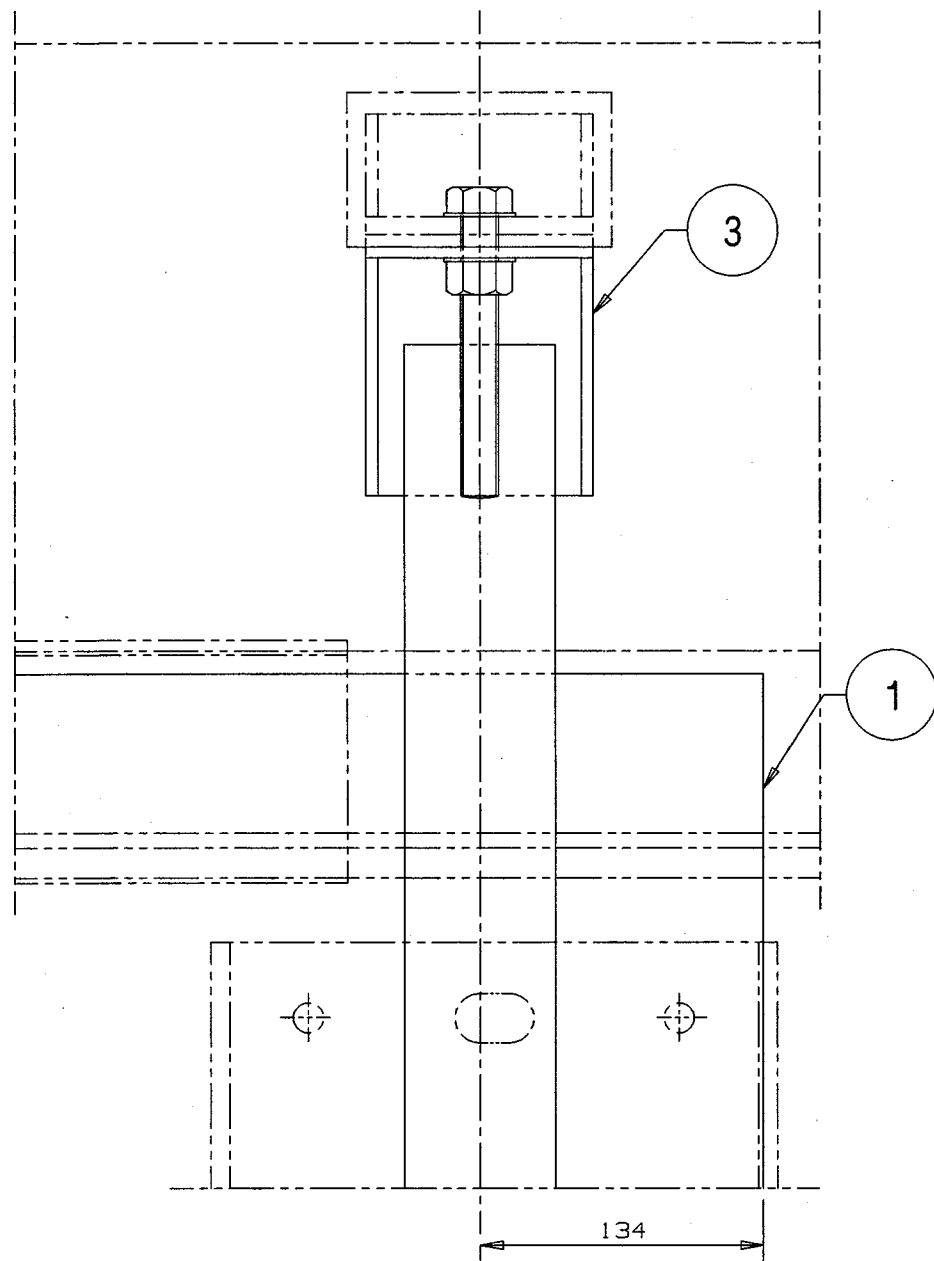
SECTION C-C



SECTION A-A



SECTION B-B



DETAIL AT-Y

NOTE :-

- \* 1. THICKNESS OF ITEM 2 TO BE TAKEN AS PER REQUIREMENT.
- 2. ITEM-9 IS TO BE PASTED ON ITEM-1 WITH APPROVED QUALITY OF GLUE.

आकृति  
ENTE,  
INTO  
प्रविष्टि  
DATA BASE

3 1 DEC 2018

9	RUBBER PACKING 10X50X2250	1	NIL	MDTS-046	NIL
8	SPLIT PIN 2.5X20	2	LIHW06	IS: 549-1974	ITEM-3
7	LOCK WASHER WITH LUG 10.5	2	NIL	IS: 5554-91	NIL
6	STAINLESS STEEL MACHINE WASHER A10.5 (A2 TO IS:1367 PT.14-1984)	6	LIHWSS09	IS: 2016-1967 DIN125	ITEM-6
5	STAINLESS STEEL HEX NUT M10 (A2-70 TO IS:1367 PT-14)	6	NIL	IS: 1364 PT.3-92 ISO-4032	NIL
4	STAINLESS STEEL HEX HEAD SCREW M10X90 (A2-70 TO IS:1367 PT.14-84)	2	NIL	IS: 1364 PT.2-92 ,CE,DIN933	NIL
3	FRP TOP COVER BELT ASSEMBLY	1	LW44699	NIL	NIL
2	RUBBER PACKING 2X60X150	2	NIL	MDTS-046	NIL
1	FRP TOP COVER	1	LE44326	NIL	NIL

WELD LENGTH	ITEM	DESCRIPTION & DIMENSIONS	QPASSLY	DETAIL DRG	MATL. & SPEC.	REMARKS
NIL	M	GROUP	CEILINGS & MOULDINGS	SUPERSEDES:	NIL	
WEIGHT	FILE	\\LE44325.prt (20)				
14.200	KG	FIXING OF FRP TOP COVER				
S. AREA	M <sup>2</sup>	FOR ACCN COACHES				
NIL	M	RAIL COACH FACTORY, KAPURTHALA				
LENGTH/DIA	M	REF.DRG.No. AE44412				
WIDTH/THICK.	M	रेलकोच फैक्टरी कपूरथला				
NIL	M	IRS				
HEIGHT	M	PL NO. NIL				
NIL	M	DRG.NO. LE44325				
ALT.	NIL	SIZE	1/1	SHEET	1/1	

THIS DRAWING IS THE INTELLECTUAL PROPERTY OF RAIL COACH FACTORY, KAPURTHALA. THIS DRAWING SHOULD NOT BE REPRODUCED, ALTERED, USED FOR MANUFACTURING OF COMPONENTS, SOLD OR TRANSFERRED WITHOUT PERMISSION FROM CHIEF DESIGN ENGINEER, RAIL COACH FACTORY, KAPURTHALA.

ANY MANUAL ALTERATION SHALL AUTOMATICALLY RENDER THIS DRAWING INVALID.

DETAIL DRGS STARTING WITH "LI" ARE INTERNAL REFERENCE LISTS ONLY AND ARE NOT FOR ISSUE.

FOR UNTOLERANCED DIMENSIONS REFER MDG0008

DATE OF FIRST ISSUE

27/12/2018

CGM BY

1

2

3

4

5

6

7

8

9

10

11

12

13

14

15

16

17

18

19