

RAIL COACH FACTORY, KAPURTHALA

(Coach Alteration Instruction No. CAI/RCF/MECH/LHB/061)

MD46111

Date: As Signed

1. **Description:** Retro fitment of Additional water filling arrangement in LHB type Coaches.
2. **Ref** : As per instructions of MTRS during visit to RCF on Dt 29.03.2024.
3. **Reason for alteration:** To increase the water filling rate in LHB Coaches.

4. Coach type & Applicability of Drawing No :

S.No	Coach Type	Applicable Drawing No	Description	QPC	Fig
1	LWACCW/L WACCN/ LWCBAC	LE63279	Additional side filling arrangement for water tank (2X685L) for LHB coaches.	01	Fig-1 & Fig-2
		LE63280	Additional side filling arrangement for water tank (450L) for LHB coaches.	01	
2	LWSCN /LWACCNE (Economy)	LE63279	Additional side filling arrangement for water tank (2X685L) for LHB coaches.	01	Fig-1 & Fig-3
		LE63281 Alt-a	Additional side filling arrangement for water tank (1X685L) for LHB coaches.	01	
3	LWFAC/ LWSCZAC/ LWFCZAC	LE63279	Additional side filling arrangement for water tank (2X685L) for LHB coaches	01	Fig-1

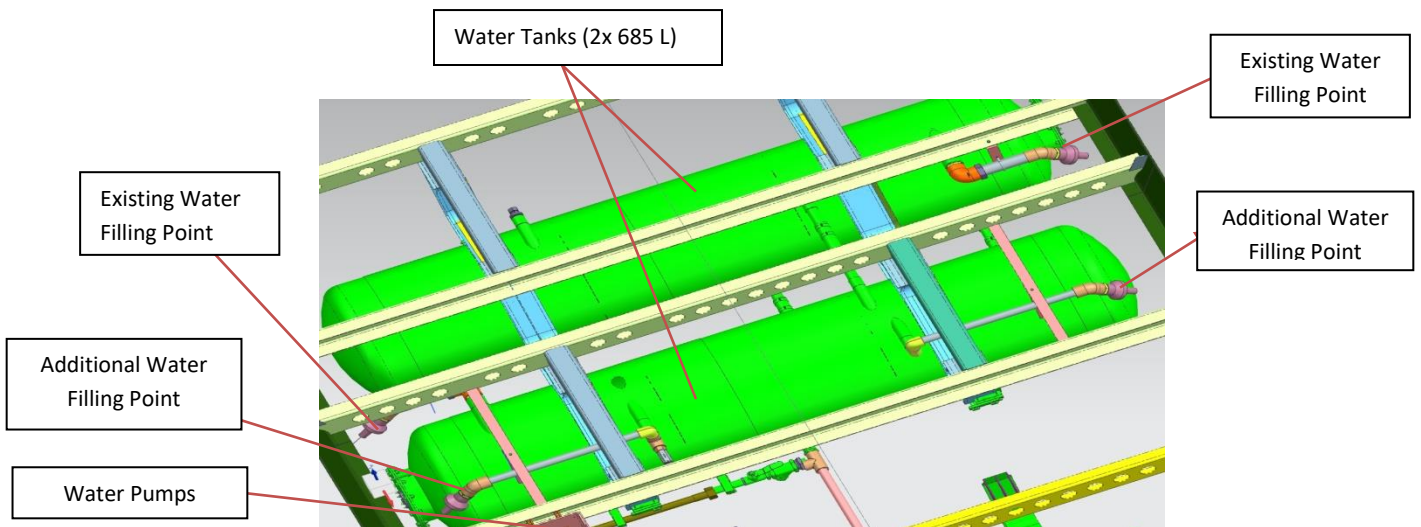


Fig-1

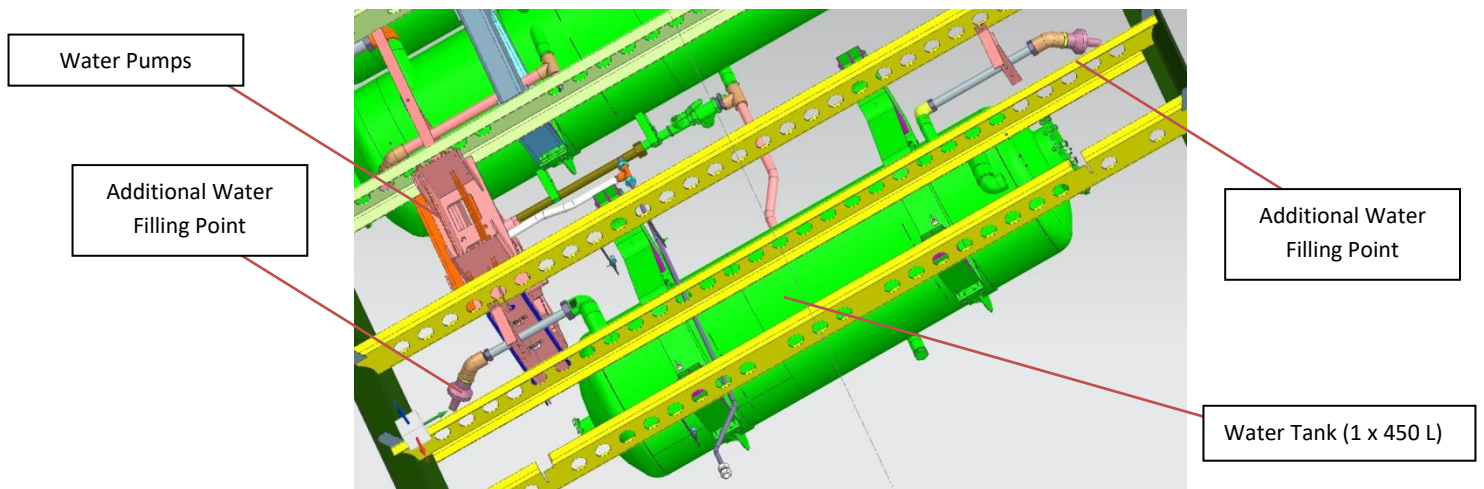


Fig-2

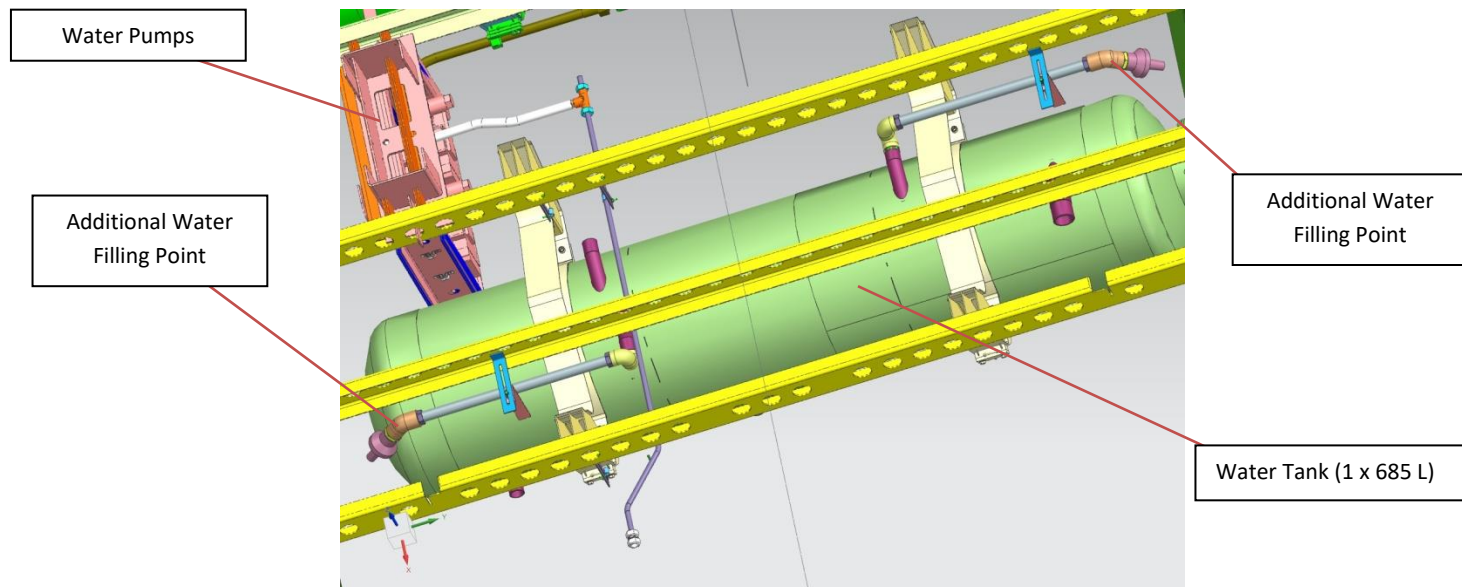


Fig-3

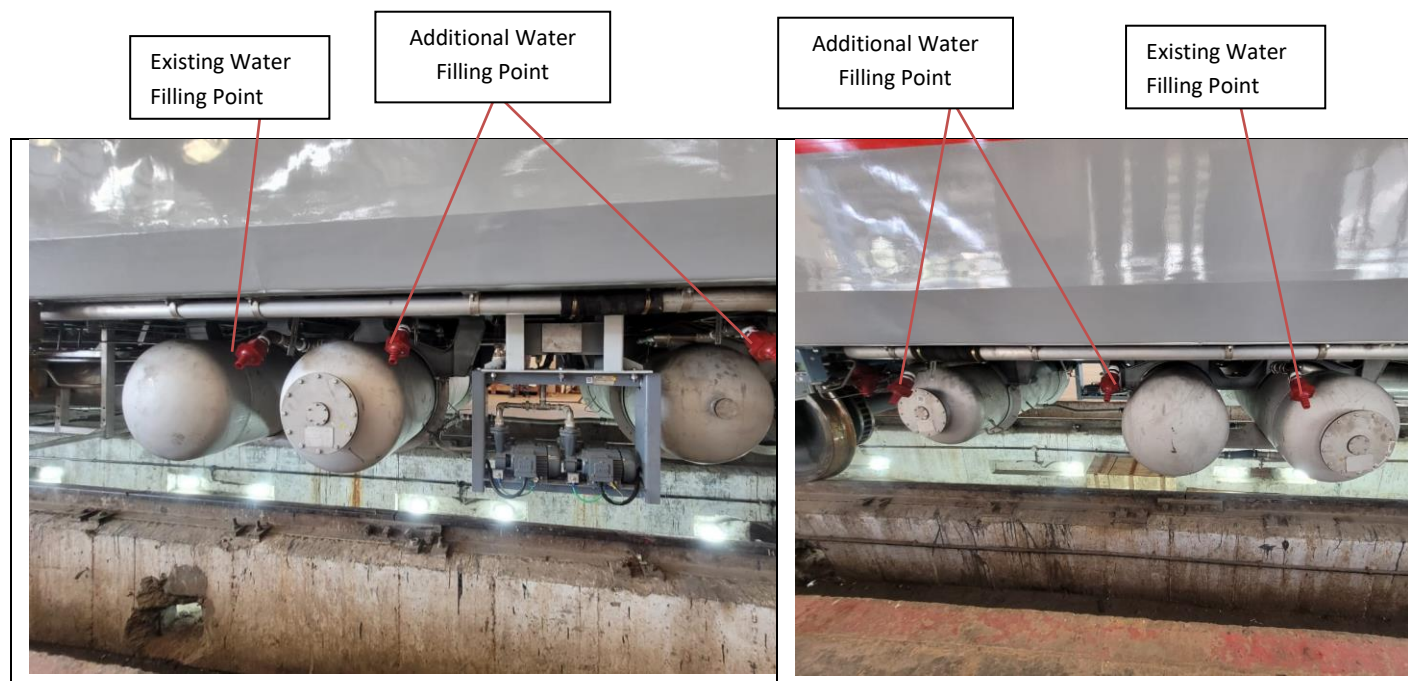


Fig-4 (Water Filling arrangements fitted on LHB ACCN Coach)

5. To be carried out:

A	✓ B
Tick A or B as applicable	

A. Modifications shall be implemented immediately by user Rlys.

B. Modifications shall be implemented by user Rlys. as and when convenient.

6. Special Instructions:

- i. Additional side filling arrangements for water tanks (2x685) should be implemented at the 32 bore overflow point, where overflow from one end of the lavatories occurs. This will involve the installation of a horizontal 15 bore check valve to check water flow in the overflow pipe during tank filling. On the opposite end, a side filling connection should be established at the existing 32 bore point, which is currently plugged.
- ii. For all filling arrangements outlined above, 25 bore stainless pipes must be utilized, along with appropriate hex bushings (32x25 bore, 40x25 bore, and 50x25 bore) as per the provided drawings.
- iii. To secure the pipes, 25 bore clamps are to be employed. Flats and brackets need to be welded onto the underframe at suitable locations, in accordance with the provided drawings.

Enclosure: Drawing Nos: LE63279, LE63280, LE63281 alt-a & LE63282

For General Manager (Mech.)

Copy to:

All Principal Chief Mechanical Engineers of IR

All Chief workshop Engineers of IR

Principal Chief Mechanical Engineers :

1. Central Railway, Mumbai CST-400 001
2. W. Railway Churchgate, Mumbai - 400 020
3. Northern Railway, Baroda House, New Delhi- 110 001
4. N.E. Railway Gorakhpur., Gorakhpur-273 001
5. N.F. Railway Maligaon, Guwahati- 781 011
6. S. Railway, Park Town, Chennai- 600 003
7. S. C. Railway, Rail Nilayam, Secunderabad- 500 371

8. S. E. Railway, Garden Reach, Kolkata-700 043
9. Eastern Railway, Fairlie Place, Kolkata-700 001
10. E. Coast. Railway, Bhubhaneswar- 751 016
11. North Central Railway, Allahabad – 211 001
12. North West Railway, Jaipur – 302 001
13. S. E. Central Railway, Bilaspur- 495 004
14. S. W. Railway, Hubli – 580 023
15. West Central Railway, Jabalpur- 482 001
16. East Central Railway, Hazipur- 844 101

Chief Works Engineer:

1. Central Railway, Matunga, Mumbai- 400 019
2. Bhopal, West Central Railway Nishatpura, MP-462 001
3. Lilluah, Eastern Railway, Howrah- 711 204
4. Alambagh , Northern Railway, Lucknow- 226 005
5. Jagadhari, Northern Railway,- 135 003
6. Gorakhpur N. E. Railway- 273 001
7. New Bongaigaon N. East Frontier Railway- 783 381
8. Perambur, Southern Railway, Chennai- 600 023
9. Golden Rock, Southern Railway, Trichy- 620 004
10. Ashokpuram , Southern Railway, Mysore South- 570 008
11. Lallagudda, S. C. Railway Secunderabad- 500 017
12. Hubli, South Western Railway- 580 020
13. Tirupati ,S. C. Railway - 517 506
14. Mancheswar, East Coast Railway, Bhubhaneswar- 751 017
15. Kharagpur, S. E. Railway- 721 301
16. Lower Parel, N.M.Joshi Marg, Western Railway, Mumbai- 400 013
17. Western Railway, Ajmer, Rajasthan
18. North East Frontier Railway, Dibrugarh, Assam-786 001

Copy to:

DG/Carriage, RDSO, Manak Nagar, Lucknow- 226 011
EDME (Coaching), Railway Board, New Delhi-110 001
EDME (W), (Coaching), Railway Board New Delhi-110 001

ALT.NO	ALT.DATE	ZONE	ALTERATIONS	AUTHORITY
NIL	NIL	NIL	NIL	NIL

16.06.2009

B

C

D

E

F

G

H

I

J

K

1

2

3

4

5

6

7

8

9

10

11

12

13

14

15

16

17

18

19

20

21

22

23

24

25

26

27

28

29

30

31

32

33

34

35

36

37

38

39

40

41

42

43

44

45

46

47

48

49

50

51

52

53

54

55

56

57

58

59

60

61

62

63

64

65

66

67

68

69

70

71

72

73

74

75

76

77

78

79

80

81

82

83

84

85

86

87

88

89

90

91

92

93

94

95

96

97

98

99

100

101

102

103

104

105

106

107

108

109

110

111

112

113

114

115

116

117

118

119

120

121

122

123

124

125

126

127

128

129

130

131

132

133

134

135

136

137

138

139

140

141

142

143

144

145

146

147

148

149

150

151

152

153

154

155

156

157

158

159

160

161

162

163

164

165

166

167

168

169

170

171

172

173

174

175

176

177

178

179

180

181

182

183

184

185

186

187

188

189

190

191

192

193

194

195

196

197

198

199

200

201

202

203

204

205

206

207

208

209

210

211

212

213

214

215

216

217

218

219

220

221

222

223

224

225

226

227

228

229

230

231

232

233

234

235

236

237

238

239

240

241

242

243

244

245

246

247

248

249

250

251

252

253

254

255

256

257

258

259

260

261

262

263

264

265

266

267

268

269

270

271

272

273

274

275

276

277

278

279

280

281

282

283

284

285

286

287

288

289

290

291

292

293

294

295

296

297

298

299

300

301

302

303

304

305

306

307

308

309

310

311

312

313

314

315

316

317

318

319

320

321

322

323

324

325

326

327

328

329

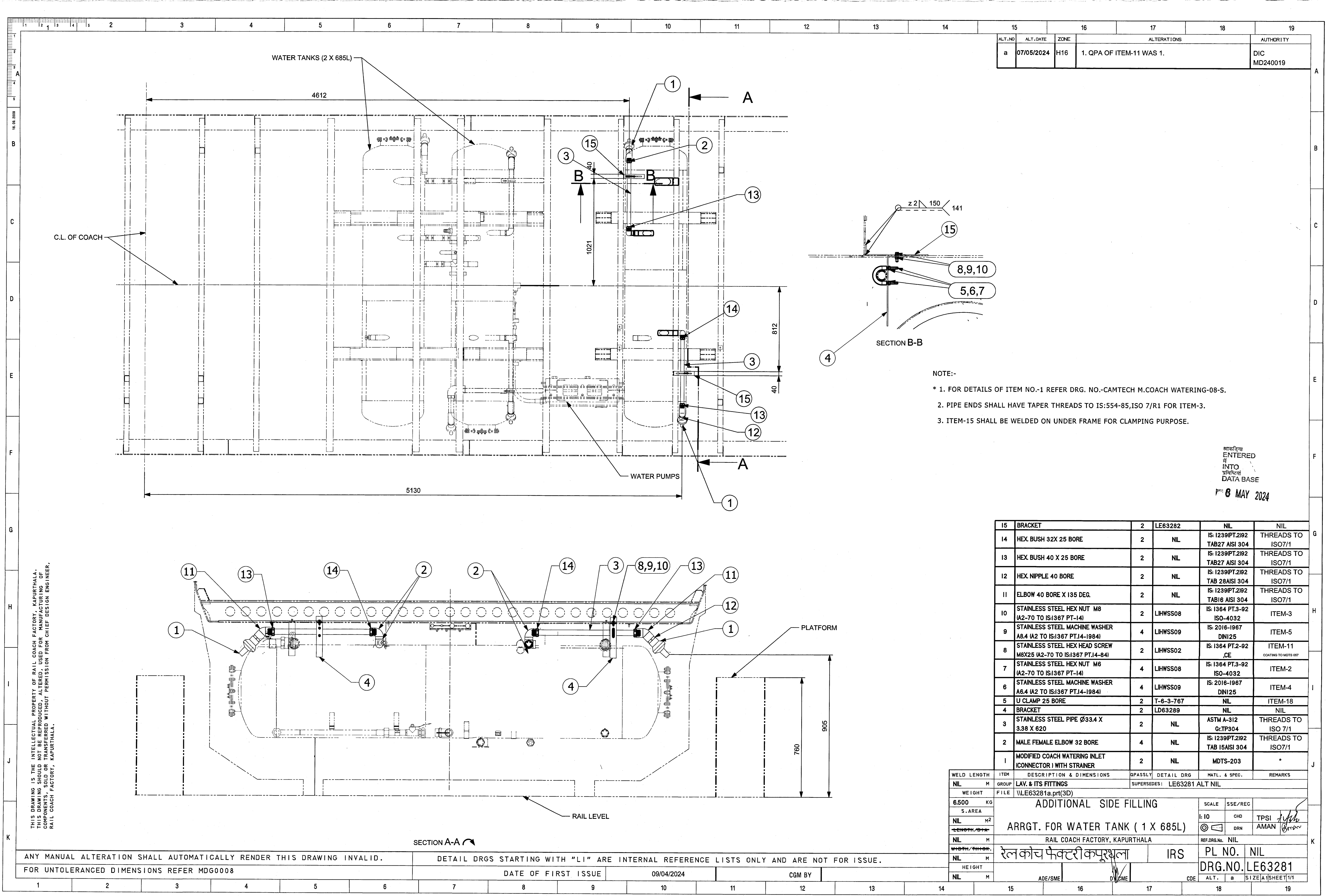
330

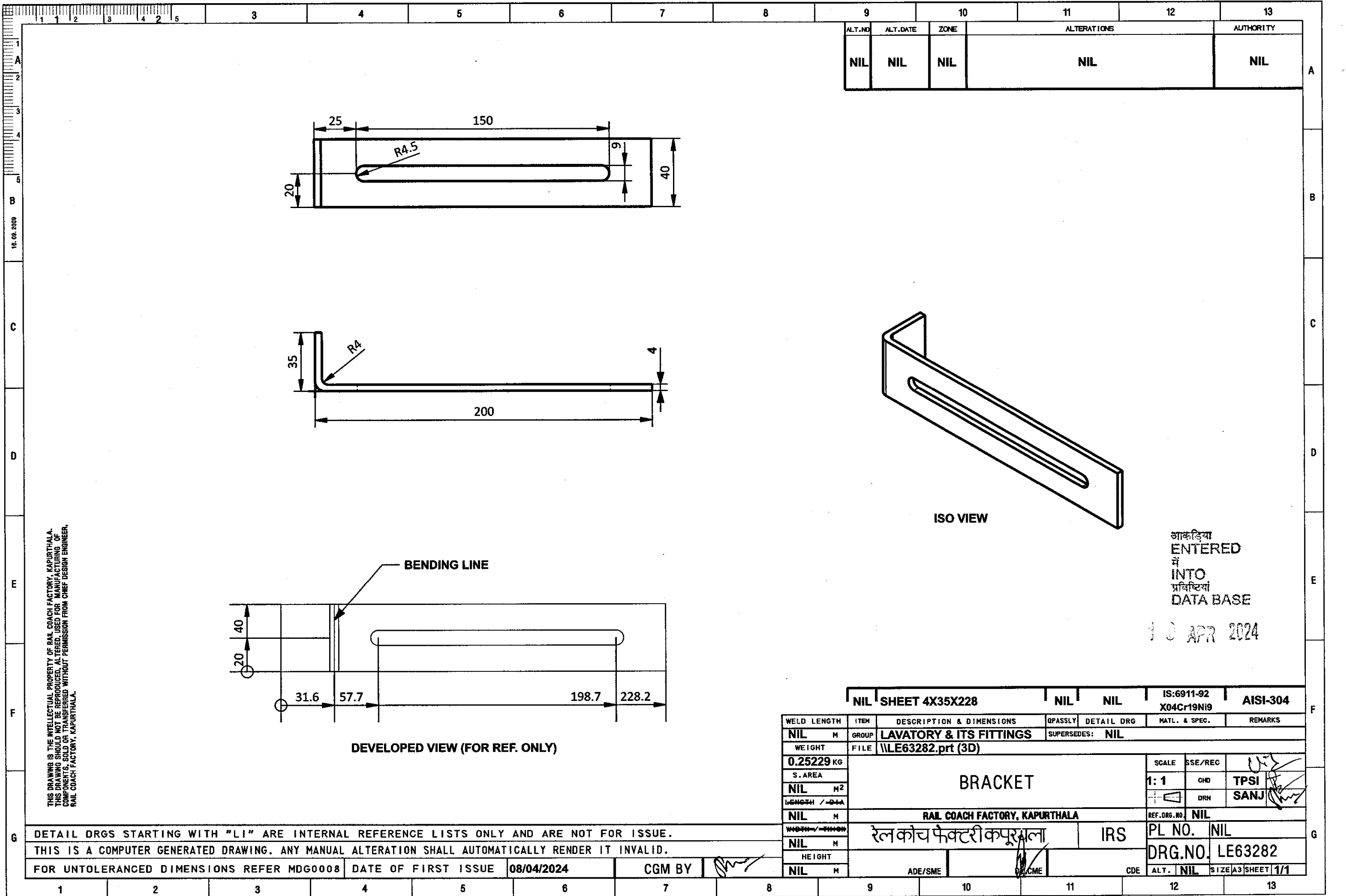
331

332

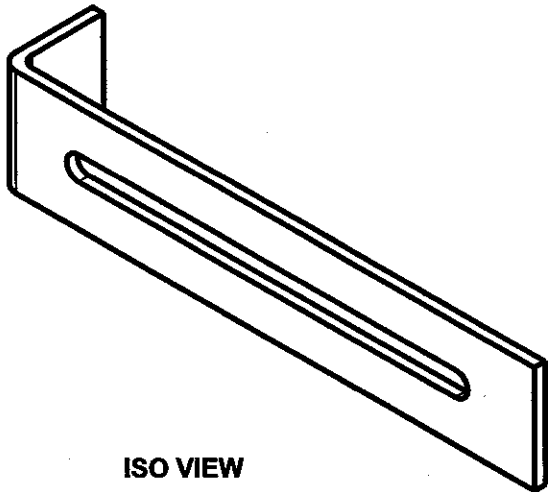
333

334





ALT. NO	ALT. DATE	ZONE	ALTERATIONS	AUTHORITY
NIL	NIL	NIL	NIL	NIL



ISO VIEW

आकडिया
ENTERED
में
INTO
प्रविष्टियां
DATA BASE
10 APR 2024

NIL	SHEET 4X35X228	NIL	NIL	IS:6911-92 X04Cr19Ni9	AISI-304
-----	----------------	-----	-----	--------------------------	----------

WELD LENGTH	ITEM	DESCRIPTION & DIMENSIONS	QPASSLY	DETAIL DRG	MATL. & SPEC.	REMARKS
NIL	M	GROUP	LAVATORY & ITS FITTINGS	SUPERSEDES:	NIL	
WEIGHT	FILE	\\LE63282.prt (3D)				
0.25229 KG		BRACKET				SCALE
S. AREA						SSE/REC
NIL	M ²					1: 1
LENGTH / -DIA-						CHD
NIL	M	RAIL COACH FACTORY, KAPURTHALA				DRN
WIDTH / -THICK-		रेल कोच फैक्टरी कपूरथला				TPSI
NIL	M	IRS				SANJ
HEIGHT		ADE/SME				REF. DRG. NO.
NIL	M	CDE				NIL
		CDE				PL NO.
		CDE				NIL
		CDE				DRG. NO.
		CDE				LE63282
		CDE				ALT.
		CDE				NIL
		CDE				SIZE
		CDE				A3
		CDE				SHEET
		CDE				1/1

DETAIL DRGS STARTING WITH "LI" ARE INTERNAL REFERENCE LISTS ONLY AND ARE NOT FOR ISSUE.	DATE OF FIRST ISSUE	08/04/2024	CGM BY	
THIS IS A COMPUTER GENERATED DRAWING. ANY MANUAL ALTERATION SHALL AUTOMATICALLY RENDER IT INVALID.				
FOR UNTOLERANCED DIMENSIONS REFER MDG0008				